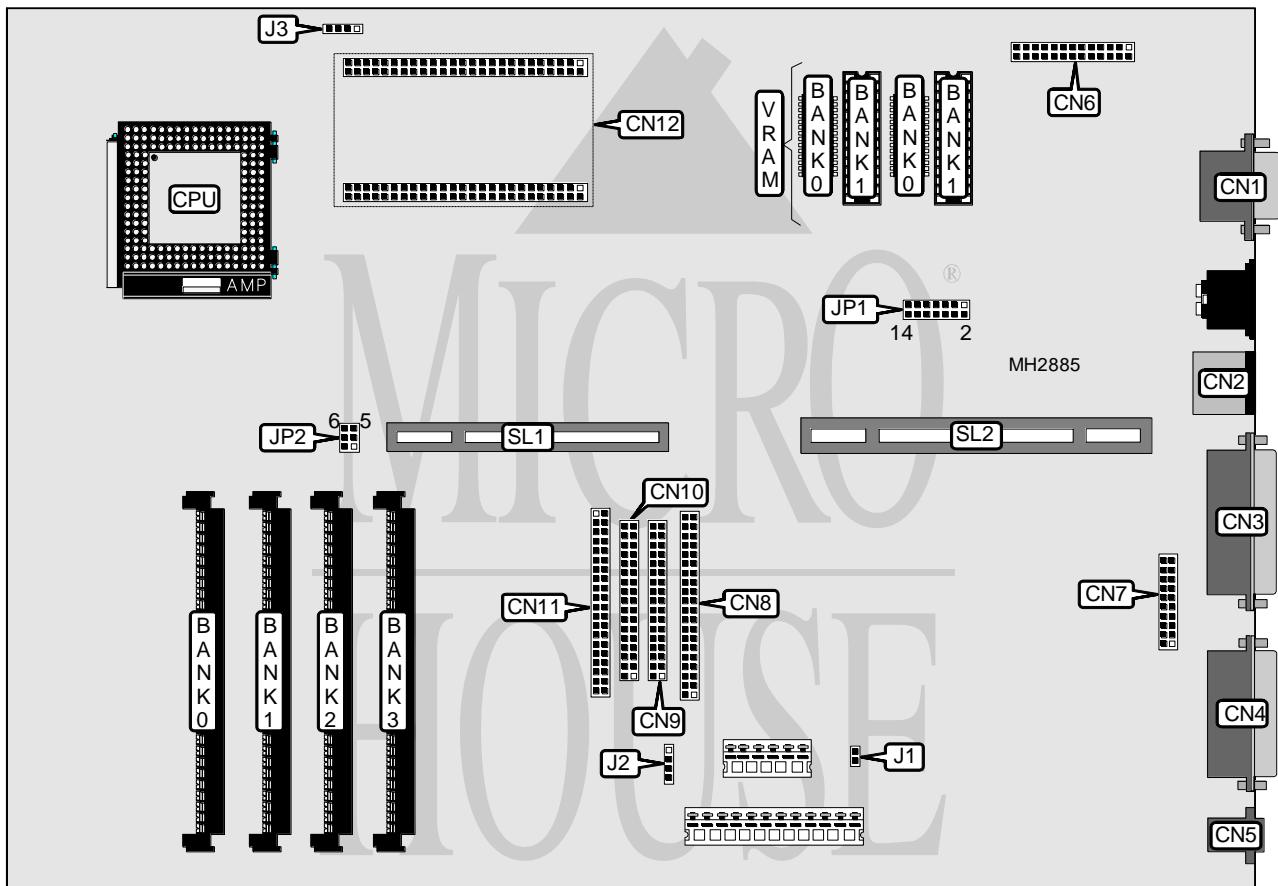


ICL ERGOPRO C4/D4 P-SERIES

Processor	80486SX/80486DX2
Processor Speed	33/50(internal)/66(internal)MHz
Chip Set	OPT1
Max. Onboard DRAM	64MB
Cache	256KB
BIOS	ICL
Dimensions	330mm x 218mm
I/O Options	PS/2 mouse port, parallel port, serial port, VGA port VGA feature connector, floppy drive interfaces (2), IDE interfaces (2) AUI port, 10 base T port, riser slot
NPU Options	None



CONNECTIONS			
Purpose	Location	Purpose	Location
VGA port	CN1	Floppy drive interface	CN9
PS/2 mouse port	CN2	Floppy drive interface	CN10
Parallel port	CN3	IDE interface	CN11
AUI port	CN4	Cache connector	CN12
10 base T port	CN5	Chassis fan power	J1
VGA feature connector	CN6	Front panel connector	J2
Serial port	CN7	IDE interface LED	J3
IDE interface	CN8	Riser Card	SL1 & SL2

Continued on next page. . .

ICL

ERGOPRO C4/D4 P-SERIES

... continued from previous page

USER CONFIGURABLE SETTINGS		
Function	Jumper	Position
í System normal operation	JP1	pins 1 & 2 open
System reset	JP1	pins 1 & 2 closed
í CMOS memory normal operation	JP1	pins 3 & 4 open
CMOS memory clear	JP1	pins 3 & 4 closed
í On board VGA enabled	JP1	pins 5 & 6 open
On board VGA disabled	JP1	pins 5 & 6 closed
í System lock disabled	JP1	pins 11 & 12 closed
System lock enabled	JP1	pins 9 & 10 closed
í Boot block disabled	JP1	pins 13 & 14 open
Boot block disabled	JP1	pins 13 & 14 closed
í Bank plane type select ISA	JP2	pins 5 & 6 closed
Bank plane type select ISA/PCI	JP2	pins 5 & 6 open
í Factory configured - do not alter	JP2	pins 1 & 2 open
í Factory configured - do not alter	JP2	pins 3 & 4 open

DRAM CONFIGURATION				
Size	Bank 0	Bank 1	Bank 2	Bank 3
4MB	(1) 1M x 36	NONE	NONE	NONE
8MB	(1) 1M x 36	(1) 1M x 36	NONE	NONE
8MB	(1) 2M x 36	NONE	NONE	NONE
12MB	(1) 1M x 36	(1) 2M x 36	NONE	NONE
12MB	(1) 1M x 36	(1) 1M x 36	(1) 1M x 36	NONE
16MB	(1) 1M x 36	(1) 1M x 36	(1) 1M x 36	(1) 1M x 36
16MB	(1) 1M x 36	(1) 1M x 36	(1) 2M x 36	NONE
16MB	(1) 2M x 36	(1) 2M x 36	NONE	NONE
16MB	(1) 4M x 36	NONE	NONE	NONE
20MB	(1) 1M x 36	(1) 4M x 36	NONE	NONE
20MB	(1) 1M x 36	(1) 4M x 36	NONE	NONE
24MB	(1) 1M x 36	(1) 1M x 36	(1) 2M x 36	(1) 2M x 36
24MB	(1) 1M x 36	(1) 1M x 36	(1) 4M x 36	NONE
24MB	(1) 2M x 36	(1) 2M x 36	(1) 2M x 36	NONE
28MB	(1) 1M x 36	(1) 2M x 36	(1) 2M x 36	(1) 2M x 36
32MB	(1) 2M x 36	(1) 2M x 36	(1) 2M x 36	(1) 2M x 36
32MB	(1) 2M x 36	(1) 2M x 36	(1) 4M x 36	NONE
32MB	(1) 4M x 36	(1) 4M x 36	NONE	NONE
40MB	(1) 1M x 36	(1) 1M x 36	(1) 4M x 36	(1) 4M x 36
48MB	(1) 2M x 36	(1) 2M x 36	(1) 4M x 36	(1) 4M x 36
48MB	(1) 4M x 36	(1) 4M x 36	(1) 4M x 36	NONE
64MB	(1) 4M x 36	(1) 4M x 36	(1) 4M x 36	(1) 4M x 36

CACHE CONFIGURATION	
Size	CN12
256KB	Card installed

Continued on next page. . .

ICL

ERGOPRO C4/D4 P-SERIES

... continued from previous page

CPU SPEED CONFIGURATION	
Speed	JP1
33MHz	pins 7 & 8 closed
50iMHz	pins 7 & 8 open
66iMHz	pins 7 & 8 open

VRAM CONFIGURATION		
Size	Bank 0	Bank 1
1MB	(2) 256K x 16	NONE
2MB	(2) 256K x 16	(2) 256K x 16