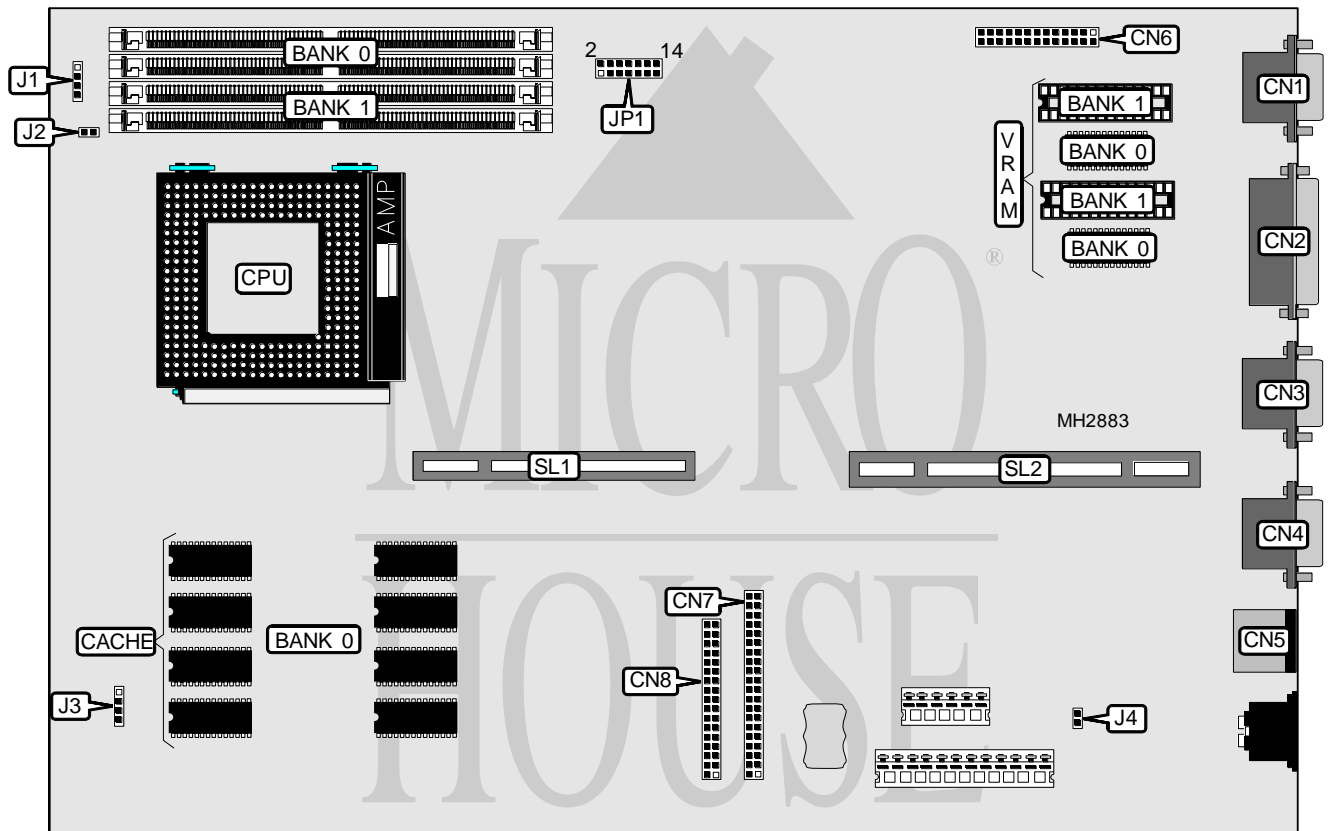


# ICL ERGOPRO D5/60

<b>Processor</b>	Pentium
<b>Processor Speed</b>	60/66MHz
<b>Chip Set</b>	OPTI
<b>Max. Onboard DRAM</b>	128MB
<b>Cache</b>	256KB
<b>BIOS</b>	ICL
<b>Dimensions</b>	330mm x 218mm
<b>I/O Options</b>	PS/2 mouse port, parallel port, serial ports (2), VGA port, VGA feature connector, floppy drive interface, IDE interface, riser slots (2)
<b>NPU Options</b>	None



CONNECTIONS			
Purpose	Location	Purpose	Location
VGA port	CN1	Floppy drive interface	CN8
Parallel port	CN2	IDE interface LED	J1
Serial port 2	CN3	Chassis fan power	J2
Serial port 1	CN4	Front panel connector	J3
PS/2 mouse port	CN5	Chassis fan power	J4
VGA feature connector	CN6	Riser Card	SL1 & SL2
IDE interface	CN7		

Continued on next page. . .

# ICL ERGOPRO D5/60

... continued from previous page

USER CONFIGURABLE SETTINGS		
Function	Jumper	Position
í On board VGA enabled	JP1	pins 1 & 2 open
On board VGA disabled	JP1	pins 1 & 2 closed
í CMOS memory normal operation	JP1	pins 3 & 4 closed
CMOS memory clear	JP1	pins 5 & 6 closed
í System lock disabled	JP1	pins 11 & 12 closed
System lock enabled	JP1	pins 9 & 10 closed
í Boot block BL RE normal operation	JP1	pins 13 & 14 open
Boot block BL RE reload enabled	JP1	pins 13 & 14 closed

DRAM CONFIGURATION		
Size	Bank 0	Bank 1
8MB	(2) 1M x 36	NONE
16MB	(2) 1M x 36	(2) 1M x 36
16MB	(2) 2M x 36	NONE
24MB	(2) 2M x 36	(2) 1M x 36
32MB	(2) 2M x 36	(2) 2M x 36
32MB	(2) 4M x 36	NONE
40MB	(2) 1M x 36	(2) 4M x 36
48MB	(2) 4M x 36	(2) 2M x 36
64MB	(2) 4M x 36	(2) 4M x 36
64MB	(2) 8M x 36	NONE
72MB	(2) 1M x 36	(2) 8M x 36
80MB	(2) 2M x 36	(2) 8M x 36
96MB	(2) 8M x 36	(2) 4M x 36
128MB	(2) 8M x 36	(2) 8M x 36

CACHE CONFIGURATION	
Size	Bank 0
256KB	(8) 32K x 8
Note: Cache is factory installed and is not configurable.	

CPU SPEED CONFIGURATION	
Speed	JP1
60MHz	pins 7 & 8 open
66MHz	pins 7 & 8 closed

VRAM CONFIGURATION		
Size	Bank 0	Bank 1
1MB	(2) 256K X 16	NONE
2MB	(2) 256K X 16	(2) 256K X 16
Note: Bank 0 is factory installed and is not configurable.		