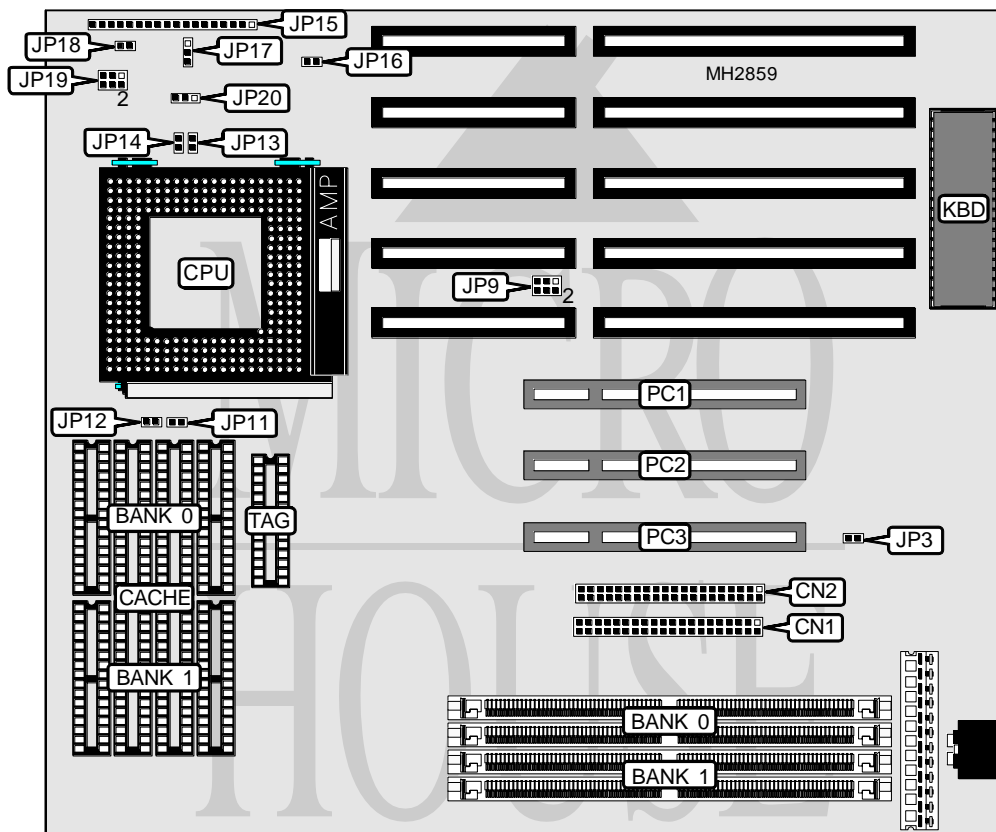


# BIOSTAR MICROTECH INTERNATIONAL CORPORATION

## MB-8575/90/00URC

<b>Processor</b>	Pentium
<b>Processor Speed</b>	75/90/100/120/133MHz
<b>Chip Set</b>	Unidentified
<b>Max. Onboard DRAM</b>	128MB
<b>Cache</b>	256/512/1024KB
<b>BIOS</b>	Award
<b>Dimensions</b>	254mm x 218mm
<b>I/O Options</b>	Green PC connector, IDE interfaces (2)
<b>NPU Options</b>	None



### CONNECTIONS

Purpose	Location	Purpose	Location
IDE interface 2	CN2	Turbo switch	JP15 pins 14 - 16
IDE interface 1	CN1	+5v ground	JP15 pins 17 - 18
Speaker	JP15 pins 1 - 4	Green PC connector	JP16
Power LED & keylock	JP15 pins 5 - 9	IDE interface LED	JP18
Turbo LED	JP15 pins 10 - 11	Chassis fan power	JP19
Reset switch	JP15 pins 12 - 13	32-bit PCI slots	PC1 - PC3

Continued on next page . . .

# BIOSTAR MICROTECH INTERNATIONAL CORPORATION

## MB-8575/90/00URC

... continued from previous page

USER CONFIGURABLE SETTINGS		
Function	Jumper	Position
í CMOS memory normal operation	JP3	Open
CMOS memory clear	JP3	Closed
í BIOS type select 5v flash BIOS	JP17	pins 1 & 2 closed
BIOS type select 12v flash BIOS	JP17	pins 2 & 3 closed
BIOS type select EPROM	JP17	Open

DRAM CONFIGURATION		
Size	Bank 0	Bank 1
8MB	(2) 1M x 36	NONE
16MB	(2) 2M x 36	NONE
16MB	(2) 1M x 36	(2) 1M x 36
24MB	(2) 1M x 36	(2) 2M x 36
32MB	(2) 4M x 36	NONE
32MB	(2) 2M x 36	(2) 2M x 36
40MB	(2) 1M x 36	(2) 4M x 36
48MB	(2) 2M x 36	(2) 4M x 36
64MB	(2) 8M x 36	NONE
64MB	(2) 4M x 36	(2) 4M x 36
72MB	(2) 1M x 36	(2) 8M x 36
80MB	(2) 2M x 36	(2) 8M x 36
96MB	(2) 4M x 36	(2) 8M x 36
128MB	(2) 8M x 36	(2) 8M x 36

CACHE CONFIGURATION			
Size	Bank 0	Bank 1	TAG
256KB	(4) 32K x 8	(4) 32K x 8	(1) 8K x 8
512KB	(4) 64K x 8	(4) 64K x 8	(1) 32K x 8
1MB	(4) 128K x 8	(4) 128K x 8	(1) 32K x 8

CACHE JUMPER CONFIGURATION		
Size	JP11	JP12
256KB	Open	Open
512KB	Closed	Open
1MB	Closed	Closed

CPU SPEED CONFIGURATION			
Speed	JP9	JP13	JP14
75MHz	pins 1 & 2 closed	Open	Open
90MHz	pins 3 & 4 closed	Open	Open
100MHz	pins 1 & 2, 5 & 6 closed	Open	Open
120MHz	pins 3 & 4 closed	Open	Closed
133MHz	pins 1 & 2, 3 & 4, 5 & 6 closed	Open	Closed

Note: JP13 is located on revision 2 and above.

Continued on next page. . .

---

**BIOSTAR MICROTECH INTERNATIONAL CORPORATION**  
**MB-8575/90/00URC***... continued from previous page*

CPU VOLTAGE CONFIGURATION	
Voltage	JP20
3.5v	pins 1 & 2 closed
3.45v	pins 2 & 3 closed