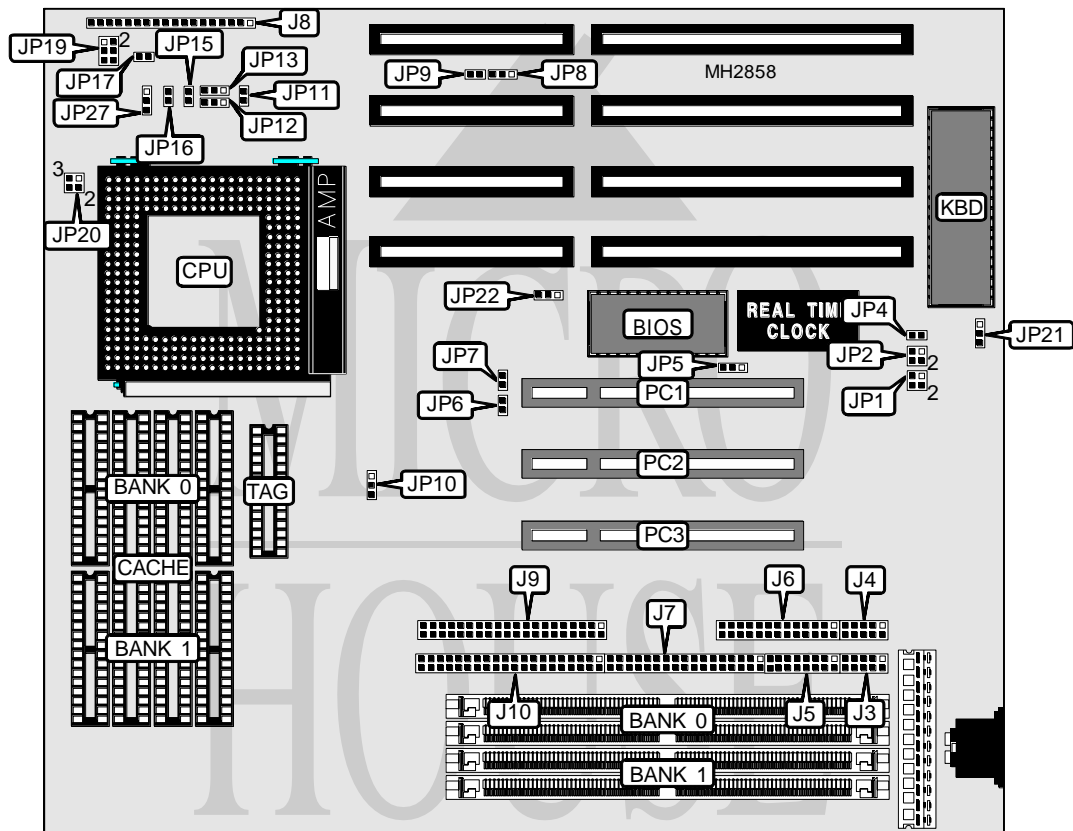


BIOSTAR MICROTECH INTERNATIONAL CORPORATION

MB-8575/90/00 VER. 3

Processor	Pentium
Processor Speed	75/90/100/120/133/150/166/180MHz
Chip Set	Unidentified
Max. Onboard DRAM	128MB
Cache	256/512KB
BIOS	Award
Dimensions	254mm x 218mm
I/O Options	Parallel port, serial ports (2), game port, 32-bit PCI slots (3), floppy drive interface, IDE interfaces (2), green PC connector
NPU Options	None



CONNECTIONS			
Purpose	Location	Purpose	Location
Serial port 1	J3	Turbo switch	J8 pins 14 - 16
Serial port 2	J4	+5v ground	J8 pins 17 - 18
Game port	J5	IDE interface 2	J9
Parallel port	J6	IDE interface 1	J10
Floppy drive interface	J7	Green PC connector	JP11
Speaker	J8 pins 1 - 4	IDE interface LED	JP17
Power LED & keylock	J8 pins 5 - 9	Chassis fan power	JP19
Turbo LED	J8 pins 10 - 11	32-bit PCI slots	PC1 - PC3
Reset switch	J8 pins 12 - 13		

Continued on next page. . .

BIOSTAR MICROTECH INTERNATIONAL CORPORATION

MB-8575/90/00 VER. 3

... continued from previous page

USER CONFIGURABLE SETTINGS		
Function	Jumper	Position
í CMOS memory normal operation	JP4	Open
CMOS memory clear	JP4	Closed
í BIOS type select 5v flash BIOS	JP5	pins 1 & 2 closed
BIOS type select 12v flash BIOS	JP5	pins 2 & 3 closed
BIOS type select EPROM	JP5	Open
í Secondary IDE IRQ select IRQ15	JP8	pins 1 & 2 closed
Secondary IDE IRQ through PCI	JP8	pins 2 & 3 closed
í Primary IDE IRQ14 enabled	JP9	Closed
Primary IDE IRQ14 disabled	JP9	Open
í ISA clock speed select PCI clock/3	JP21	pins 1 & 2 closed
SA clock speed select PCI clock/4	JP21	pins 2 & 3 closed
í Factory configured - do not alter	JP22	pins 2 & 3 closed

DRAM CONFIGURATION		
Size	Bank 0	Bank 1
8MB	(2) 1M x 36	NONE
16MB	(2) 2M x 36	NONE
16MB	(2) 1M x 36	(2) 1M x 36
24MB	(2) 1M x 36	(2) 2M x 36
32MB	(2) 4M x 36	NONE
32MB	(2) 2M x 36	(2) 2M x 36
40MB	(2) 1M x 36	(2) 4M x 36
48MB	(2) 2M x 36	(2) 4M x 36
64MB	(2) 8M x 36	NONE
64MB	(2) 4M x 36	(2) 4M x 36
72MB	(2) 1M x 36	(2) 8M x 36
80MB	(2) 2M x 36	(2) 8M x 36
96MB	(2) 4M x 36	(2) 8M x 36
128MB	(2) 8M x 36	(2) 8M x 36

CACHE CONFIGURATION			
Size	Bank 0	Bank 1	TAG
256KB	(4) 32K x 8	(4) 32K x 8	(1) 8K x 8
512KB	(4) 64K x 8	(4) 64K x 8	(1) 32K x 8

CACHE JUMPER CONFIGURATION			
Size	JP10	JP12	JP13
0KB	pins 2 & 3 closed	pins 1 & 2 closed	pins 1 & 2 closed
256KB	pins 2 & 3 closed	pins 1 & 2 closed	pins 2 & 3 closed
512KB	pins 1 & 2 closed	pins 2 & 3 closed	pins 1 & 2 closed

Continued on next page. . .

BIOSTAR MICROTECH INTERNATIONAL CORPORATION

MB-8575/90/00 VER. 3

... continued from previous page

CPU TYPE CONFIGURATION	
Type	JP20
P54C	pins 1 & 2, 3 & 4 closed
P54CQS	pins 1 & 2, 3 & 4 closed
P54CS	pins 1 & 2, 3 & 4 closed
P54CT	pins 1 & 2, 3 & 4 closed
P55C	Open
P55CT	Open

CPU SPEED CONFIGURATION				
Speed	JP6	JP7	JP15	JP16
75MHz	Open	Open	Open	Open
90MHz	Open	Closed	Open	Open
100MHz	Closed	Closed	Open	Open
120MHz	Open	Closed	Open	Closed
133MHz	Closed	Closed	Open	Closed
150MHz	Open	Closed	Closed	Closed
166MHz	Closed	Closed	Closed	Closed
180MHz	Open	Closed	Closed	Open

CPU VOLTAGE CONFIGURATION	
Voltage	JP27
3.4v	pins 1 & 2 closed
3.5v	pins 2 & 3 closed

DMA CONFIGURATION		
DMA	JP1	JP2
DMA 1	pins 1 & 3 closed	pins 1 & 3 closed
DMA 2	pins 2 & 4 closed	pins 2 & 4 closed