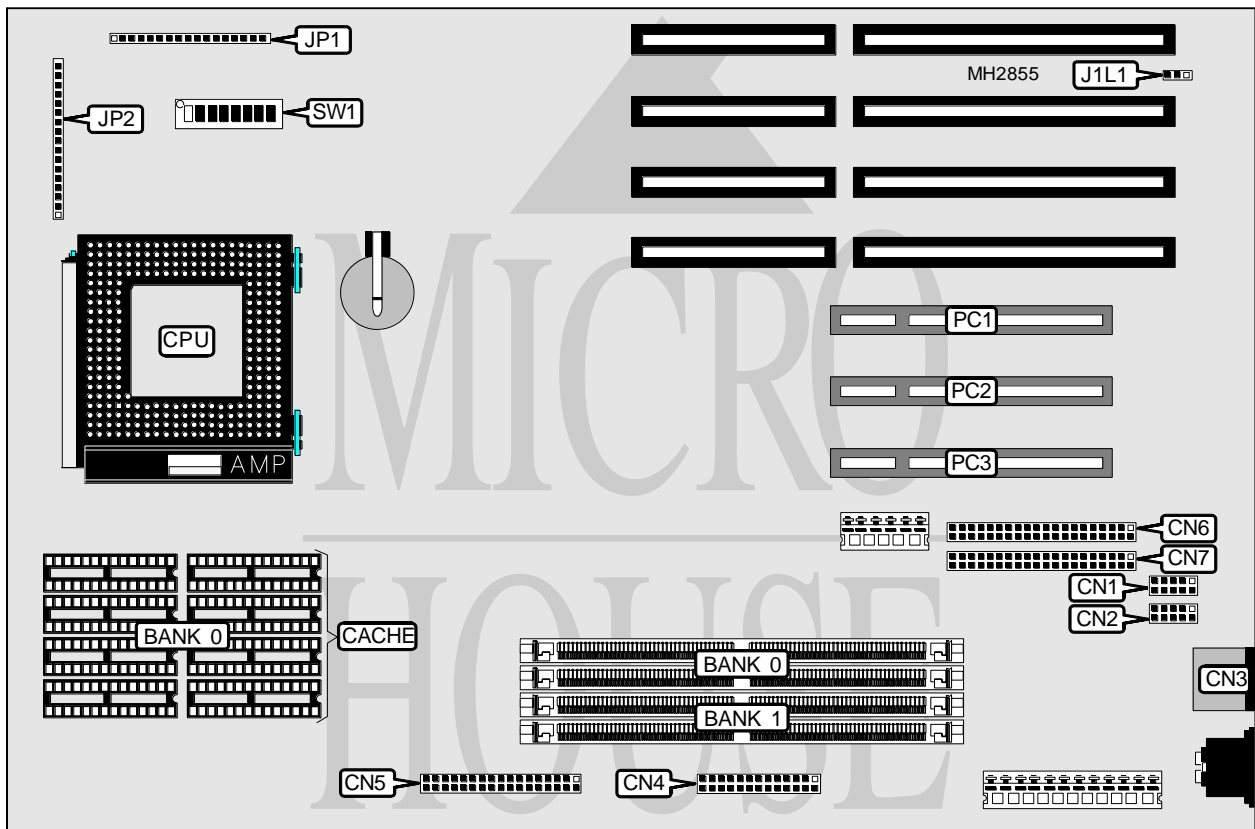


INTEL CORPORATION

ZAPPA EXPANDABLE DESKTOP (P54C-PCI TRITON)

Processor	Pentium
Processor Speed	75/90MHz
Chip Set	Intel
Max. Onboard DRAM	128MB
Cache	256/512KB
BIOS	AMI
Dimensions	330mm x 218mm
I/O Options	PS/2 mouse port, parallel port, serial ports (2), 32-bit PCI slots (3), green PC connector, floppy drive interface, IDE interfaces (2)
NPU Options	None



CONNECTIONS

Purpose	Location	Purpose	Location
Serial port 2	CN1	IDE interface LED	JP1 pins 4 - 8
Serial port 1	CN2	Power LED & keylock	JP1 pins 10 - 15
PS/2 mouse port	CN3	Reset switch	JP1 pins 16 - 17
Parallel port	CN4	Green PC connector	JP2 pins 1 & 2
Floppy drive interface	CN5	Infra red connector	JP2 pins 4 - 8
IDE interface 2	CN6	Chassis fan power	JP2 pins 10 - 12
IDE interface 1	CN7	Speaker	JP2 pins 14 - 17
Turbo LED	JP1 pins 1 & 2	32-bit PCI slots	PC1 - PC3

Continued on next page. . .

INTEL CORPORATION

ZAPPA EXPANDABLE DESKTOP (P54C-PCI TRITON)

... continued from previous page

USER CONFIGURABLE SETTINGS		
Function	Jumper/Switch	Position
í Recovery boot enabled	J1L1	pins 1 & 2 closed
Recovery boot disabled	J1L1	pins 2 & 3 closed
í Factory configured - do not alter	SW1/1	Off
í Factory configured - do not alter	SW1/2	Off
í Password memory normal operation	SW1/3	Off
Password memory clear	SW1/3	On
í CMOS memory normal operation	SW1/4	Off
CMOS memory clear	SW1/4	On
í CMOS setup utility enabled	SW1/5	Off
CMOS setup utility disabled	SW1/5	On
í CPU bus clock speed select 2/3	SW1/6	Off
CPU bus clock speed select 1/2	SW1/6	On

DRAM CONFIGURATION		
Size	Bank 0	Bank 1
8MB	NONE	(2) 1M x 36
8MB	(2) 1M x 36	NONE
16MB	NONE	(2) 2M x 36
16MB	(2) 1M x 36	(2) 1M x 36
16MB	(2) 2M x 36	NONE
24MB	(2) 1M x 36	(2) 2M x 36
24MB	(2) 2M x 36	(2) 1M x 36
32MB	NONE	(2) 4M x 36
32MB	(2) 2M x 36	(2) 2M x 36
32MB	(2) 4M x 36	NONE
40MB	(2) 1M x 36	(2) 4M x 36
40MB	(2) 4M x 36	(2) 1M x 36
48MB	(2) 2M x 36	(2) 4M x 36
48MB	(2) 4M x 36	(2) 2M x 36
64MB	NONE	(2) 8M x 36
64MB	(2) 4M x 36	(2) 4M x 36
64MB	(2) 8M x 36	NONE
72MB	(2) 1M x 36	(2) 8M x 36
72MB	(2) 8M x 36	(2) 1M x 36
80MB	(2) 2M x 36	(2) 8M x 36
80MB	(2) 8M x 36	(2) 2M x 36
96MB	(2) 4M x 36	(2) 8M x 36
96MB	(2) 8M x 36	(2) 4M x 36
128MB	(2) 8M x 36	(2) 8M x 36

CACHE CONFIGURATION	
Size	Bank 0
256KB	(8) 32K x 8
512KB	(8) 128K x 8

Continued on next page. ...

INTEL CORPORATION
ZAPPA EXPANDABLE DESKTOP (P54C-PCI TRITON)

... continued from previous page

CPU SPEED CONFIGURATION		
Speed	SW1/7	SW1/8
75MHz	Off	Off
90MHz	On	Off