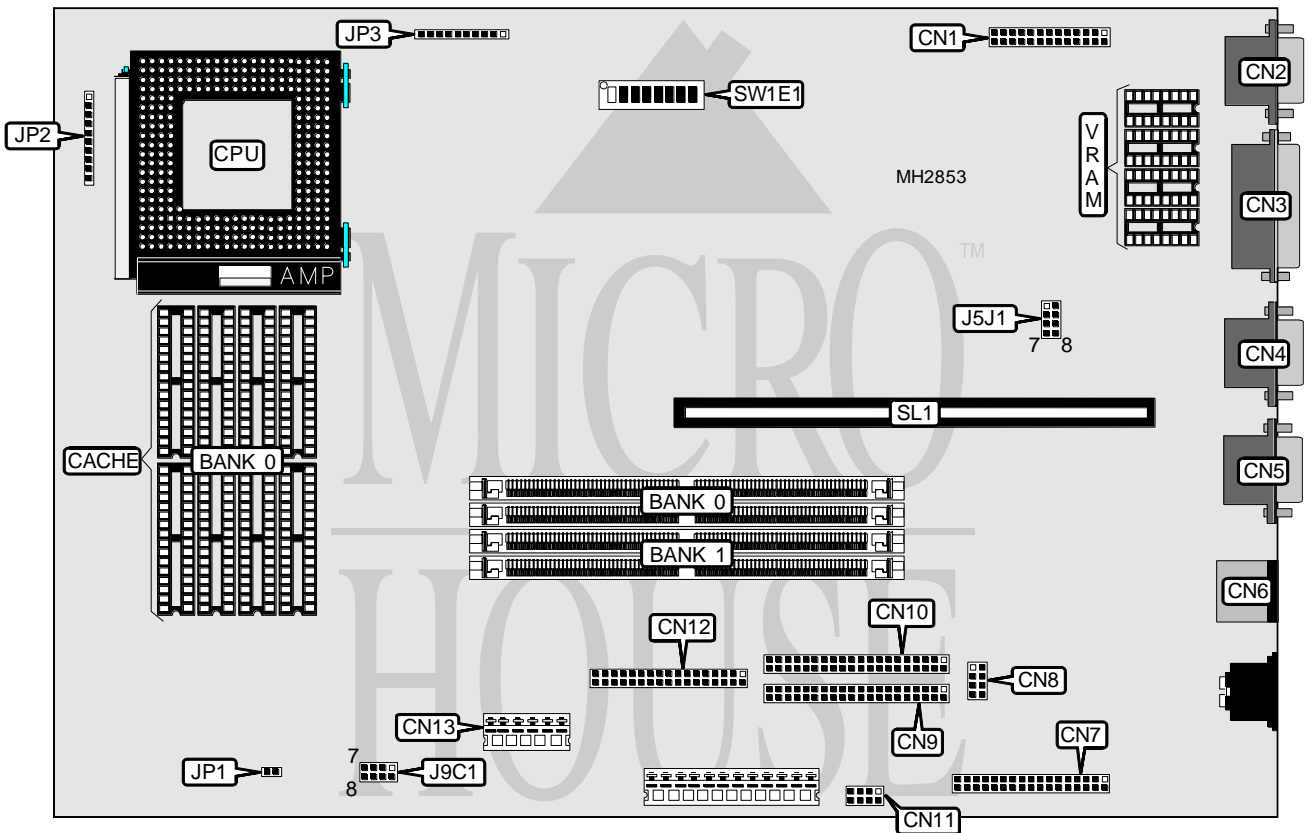


INTEL CORPORATION ADVANCED/MN (MORRISSON)

Processor	Pentium
Processor Speed	75/90/100/120MHz
Chip Set	Unidentified
Max. Onboard DRAM	128MB
Cache	256/512KB
BIOS	AMI
Dimensions	330mm x 218mm
I/O Options	PS/2 mouse port, parallel port, serial ports (2), VGA port, VGA feature connector, green PC connector, floppy drive interface, IDE interfaces (2)
NPU Options	None



Continued on next page. . .

INTEL CORPORATION

ADVANCED/MN (MORRISON)

... continued from previous page

CONNECTIONS			
Purpose	Location	Purpose	Location
VGA feature connector	CN1	IDE interface	CN10
VGA port	CN2	CD-ROM audio connector	CN11
Parallel port	CN3	Floppy drive interface	CN12
Serial port 1	CN4	Power supply remote connector	CN13
Serial port 2	CN5	Green PC connector	JP1
PS/2 mouse port	CN6	Front panel connector	JP2
Audio I/O connector	CN7	Front panel connector	JP3
Wave table connector	CN8	Riser Card	SL1
IDE interface	CN9		

Note: The actual sizes of jumpers CN7, CN8, CN10, JP2, JP3 are unidentified. They are shown for location purposes only.

USER CONFIGURABLE SETTINGS		
Function	Jumper/Switch	Position
í ISA clock speed select 1/6	J5J1	pins 5 & 7 open
ISA clock speed select 1/8	J5J1	pins 5 & 7 closed
í Recovery boot enabled	J5J1	pins 1 & 3 closed
Recovery boot disabled	J5J1	pins 1 & 2 closed
í CPU type select VR rated	J9C1	pins 1 & 3 closed
CPU type select VRE rated	J9C1	pins 5 & 7 closed
í Password normal operation	SW1E1/3	Off
Password clear	SW1E1/3	On
í CMOS memory normal operation	SW1E1/4	Off
CMOS memory clear	SW1E1/4	On
í CMOS setup utility access enabled	SW1E1/5	Off
CMOS setup utility access disabled	SW1E1/5	On

DRAM CONFIGURATION		
Size	Bank 0	Bank 1
8MB	(2) 1M x 36	NONE
8MB	NONE	(2) 1M x 36
16MB	(2) 2M x 36	NONE
16MB	NONE	(2) 2M x 36
16MB	(2) 1M x 36	(2) 1M x 36
24MB	(2) 1M x 36	(2) 2M x 36
24MB	(2) 2M x 36	(2) 1M x 36
32MB	(2) 2M x 36	(2) 2M x 36
48MB	(2) 2M x 36	(2) 4M x 36
48MB	(2) 4M x 36	(2) 2M x 36
64MB	(2) 4M x 36	(2) 4M x 36
72MB	(2) 1M x 36	(2) 8M x 36
72MB	(2) 8M x 36	(2) 1M x 36
128MB	(2) 8M x 36	(2) 8M x 36

Continued on next page. . .

INTEL CORPORATION ADVANCED/MN (MORRISSON)

... continued from previous page

CACHE CONFIGURATION	
Size	Bank 0
256KB	(8) 32K x 8
512KB	(8) 64K x 8

CACHE JUMPER CONFIGURATION		
Size	SW1E1/1	SW1E1/2
256KB	Off	Off
512KB	Off	On

CPU SPEED CONFIGURATION			
Speed	SW1E1/6	SW1E1/7	SW1E1/8
75MHz	Off	Off	Off
90MHz	Off	On	Off
100MHz	Off	Off	On
120MHz	On	On	Off

VRAM CONFIGURATION
VRAM is upgradable to 2MB, but the chip size is unidentified.