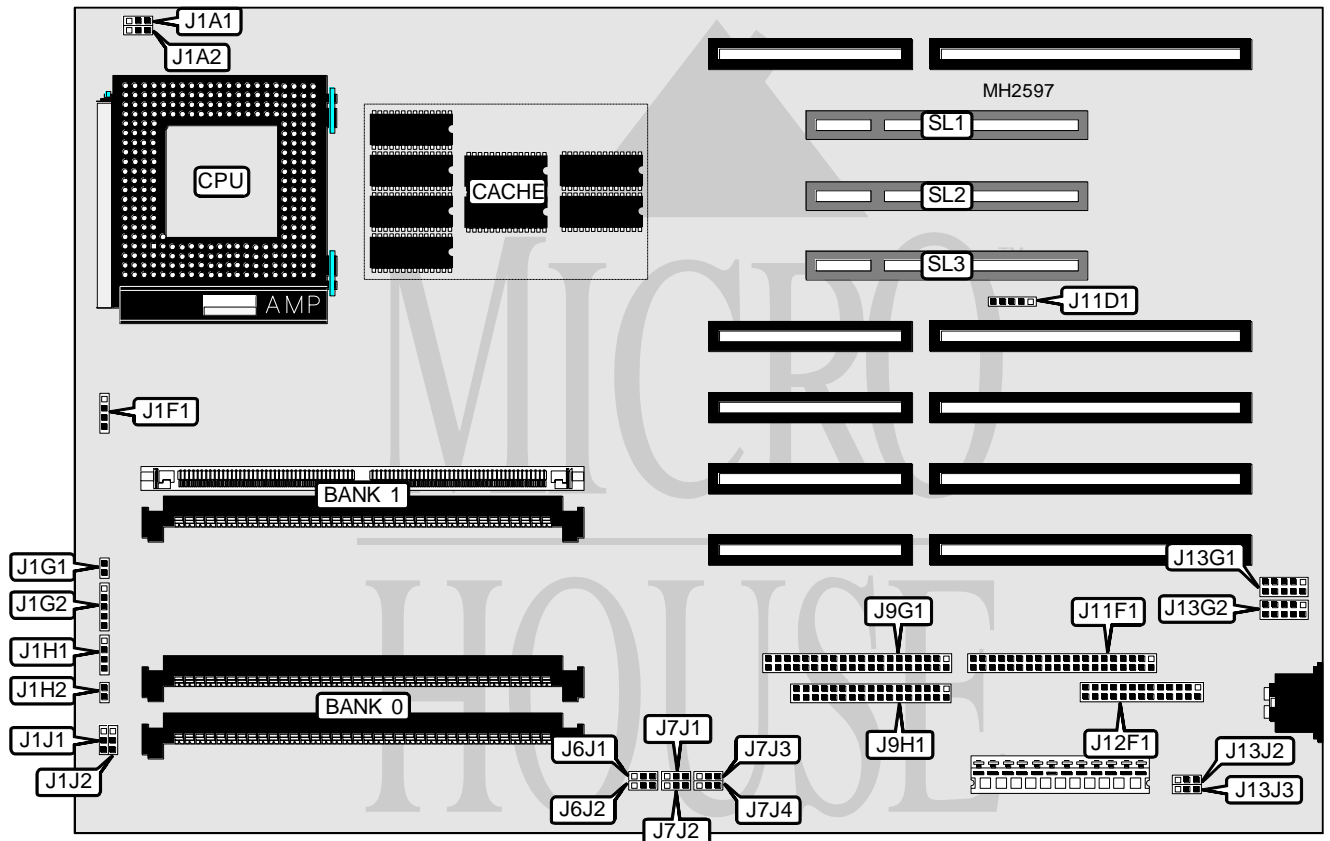


# INTEL CORPORATION PREMIERE/PCI (P5-PCI BATMAN)

<b>Processor</b>	Pentium
<b>Processor Speed</b>	60/66MHz
<b>Chip Set</b>	Intel
<b>Max. Onboard DRAM</b>	128MB
<b>Cache</b>	256KB
<b>BIOS</b>	Unidentified
<b>Dimensions</b>	330mm x 218mm
<b>I/O Options</b>	32-bit PCI slots (3), floppy drive interface, IDE interfaces (2), parallel port, serial ports (2)
<b>NPU Options</b>	None



CONNECTIONS			
Purpose	Location	Purpose	Location
Chassis fan power (fast)	J1A1	IDE interface	J9G1
Chassis fan power (slow)	J1A2	Floppy drive interface	J9H1
Speaker	J1F1	Auxiliary power connector	J11D1
Power LED & keylock	J1G2	IDE interface	J11F1
Reset switch	J1G1	Parallel port	J12F1
IDE interface LED	J1H1	Serial port 1	J13G1
Turbo LED	J1H2	Serial port 2	J13G2
Turbo switch	J1J1	32-bit PCI slots	SL1 - SL3

Continued on next page. . .

# INTEL CORPORATION

## PREMIERE/PCI (P5-PCI BATMAN)

... continued from previous page

USER CONFIGURABLE SETTINGS		
Function	Jumper	Position
í CMOS memory normal operation	J6J1	pins 1 & 2 closed
CMOS memory clear	J6J1	pins 2 & 3 closed
í Flash recovery select normal mode	J6J2	pins 2 & 3 closed
Flash recovery select recovery mode	J6J2	pins 1 & 2 closed
í Setup entry enabled	J7J1	pins 1 & 2 closed
Setup entry disabled	J7J1	pins 2 & 3 closed
í Flash BIOS write protect enabled	J7J2	pins 2 & 3 closed
Flash BIOS write protect disabled	J7J2	pins 1 & 2 closed
í Monitor type select color	J7J3	pins 2 & 3 closed
Monitor type select monochrome	J7J3	pins 1 & 2 closed
í Password enabled	J7J4	pins 1 & 2 closed
Password disabled	J7J4	pins 2 & 3 closed
í Factory configured - do not alter	J13J3	Open

DRAM CONFIGURATION		
Size	Bank 0	Bank 1
8MB	(2) 512K x 36	(2) 512K x 36
8MB	(2) 1M x 36	NONE
10MB	(2) 1M x 36	(2) 256K x 36
10MB	(2) 256K x 36	(2) 1M x 36
12MB	(2) 1M x 36	(2) 512K x 36
12MB	(2) 512K x 36	(2) 1M x 36
16MB	(2) 1M x 36	(2) 1M x 36
16MB	(2) 2M x 36	NONE
18MB	(2) 2M x 36	(2) 256K x 36
18MB	(2) 256K x 36	(2) 2M x 36
20MB	(2) 2M x 36	(2) 512K x 36
20MB	(2) 512K x 36	(2) 2M x 36
24MB	(2) 2M x 36	(2) 1M x 36
24MB	(2) 1M x 36	(2) 2M x 36
32MB	(2) 2M x 36	(2) 2M x 36
32MB	(2) 4M x 36	NONE
34MB	(2) 4M x 36	(2) 256K x 36
34MB	(2) 256K x 36	(2) 4M x 36
36MB	(2) 4M x 36	(2) 512K x 36
36MB	(2) 512K x 36	(2) 4M x 36
40MB	(2) 4M x 36	(2) 1M x 36
40MB	(2) 1M x 36	(2) 4M x 36
48MB	(2) 4M x 36	(2) 2M x 36

Continued on next page ...

# INTEL CORPORATION

## PREMIERE/PCI (P5-PCI BATMAN)

... continued from previous page.

DRAM CONFIGURATION (CON'T)		
Size	Bank 0	Bank 1
48MB	(2) 2M x 36	(2) 4M x 36
64MB	(2) 4M x 36	(2) 4M x 36
64MB	(2) 8M x 36	NONE
66MB	(2) 8M x 36	(2) 256K x 36
66MB	(2) 256K x 36	(2) 8M x 36
68MB	(2) 8M x 36	(2) 512K x 36
68MB	(2) 512K x 36	(2) 8M x 36
72MB	(2) 8M x 36	(2) 1M x 36
72MB	(2) 1M x 36	(2) 8M x 36
80MB	(2) 8M x 36	(2) 2M x 36
80MB	(2) 2M x 36	(2) 8M x 36
96MB	(2) 8M x 36	(2) 4M x 36
96MB	(2) 4M x 36	(2) 8M x 36
128MB	(2) 8M x 36	(2) 8M x 36

### CACHE CONFIGURATION

Note: This board is factory installed with 256KB cache. It is not configurable.

### CPU SPEED CONFIGURATION

Speed	J1J2
60MHz	pins 2 & 3 closed
66MHz	pins 1 & 2 closed

### CPU VOLTAGE CONFIGURATION

Voltage	J13J2
5v (60MHz)	pins 1 & 2 closed
5.27v (66MHz)	pins 2 & 3 closed