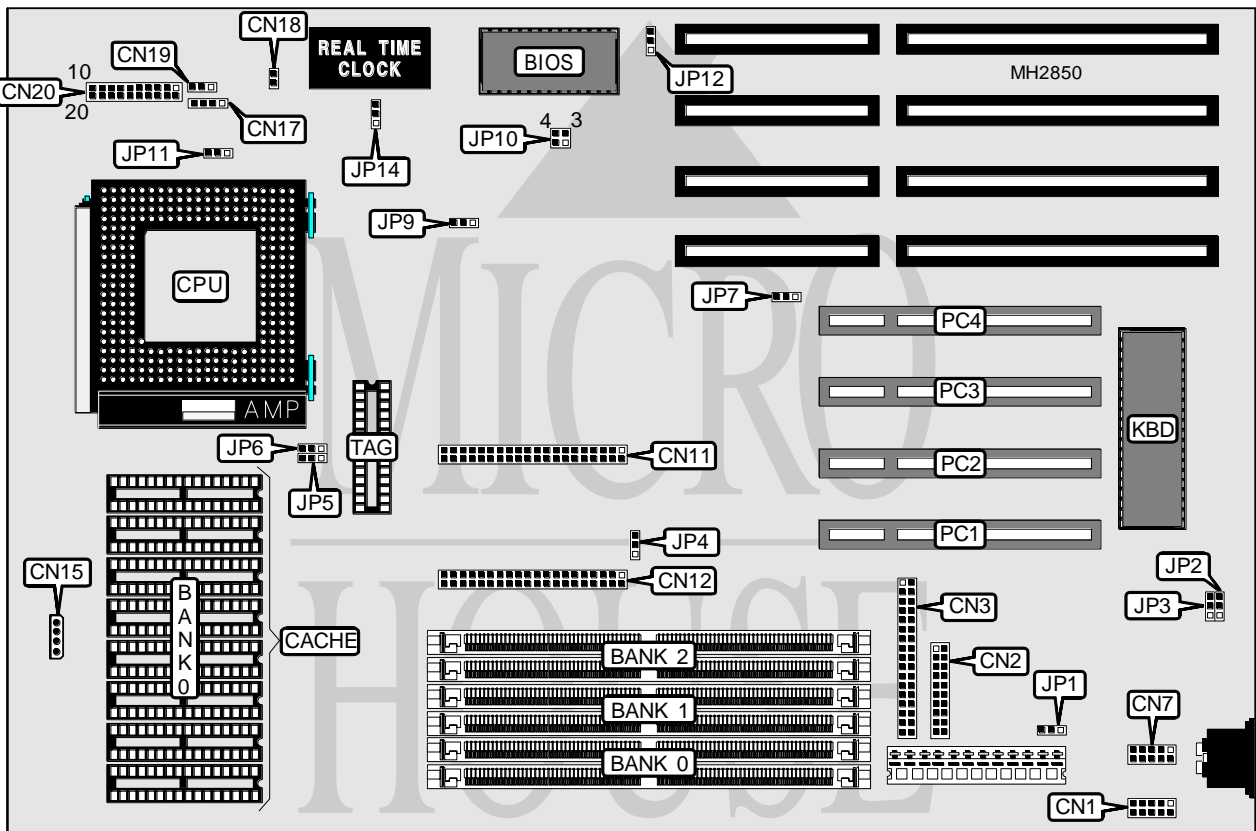


# ACER, INC. PI8G

<b>Processor</b>	Pentium
<b>Processor Speed</b>	60/66MHz
<b>Chip Set</b>	ALI
<b>Max. Onboard DRAM</b>	160MB
<b>Cache</b>	256/512/1024KB
<b>BIOS</b>	Phoenix
<b>Dimensions</b>	330mm x 218mm
<b>I/O Options</b>	Parallel port, serial ports (2), 32-bit PCI slots (4), green PC connector, floppy drive interface, IDE interfaces (2)
<b>NPU Options</b>	None



CONNECTIONS			
Purpose	Location	Purpose	Location
Serial port 1	CN1	Chassis fan power	CN18
Parallel port	CN2	Green PC connector	CN19
Floppy drive interface	CN3	Power LED & keylock	CN20 pins 1 - 5
Serial port 2	CN7	Speaker	CN20 pins 7 - 10
IDE interface 1	CN11	Green PC LED	CN20 pins 12 - 13
IDE interface 2	CN12	Turbo switch	CN20 pins 15 - 17
Chassis fan power	CN15	Reset switch	CN20 pins 19 - 20
IDE interface LED	CN17	32-bit PCI slots	PC1 - PC4

Continued on next page. . .

# ACER, INC.

## PI8G

... continued from previous page

USER CONFIGURABLE SETTINGS		
Function	Jumper	Position
í On board I/O enabled	JP1	pins 1 & 2 closed
On board I/O disabled	JP1	pins 2 & 3 closed
í IDE interface enabled	JP4	pins 1 & 2 closed
IDE interface disabled	JP4	pins 2 & 3 closed
í M5215N I/O port address select F4h	JP7	pins 1 & 2 closed
M5215N I/O port address select 74h	JP7	pins 2 & 3 closed
í ADS signal delay select no delay	JP9	pins 1 & 2 closed
ADS signal delay select ADS delayed	JP9	pins 2 & 3 closed
í EPA fan control enabled	JP11	pins 1 & 2 closed
EPA fan control disabled	JP11	pins 2 & 3 closed
í BIOS voltage select 12v	JP12	pins 1 & 2 closed
BIOS voltage select 5v	JP12	pins 2 & 3 closed
í CMOS memory normal operation	JP14	pins 2 & 3 closed
CMOS memory clear	JP14	pins 1 & 2 closed

DRAM CONFIGURATION			
Size	Bank 0	Bank 1	Bank 2
4MB	(2) 256K x 36	(2) 256K x 36	NONE
4MB	(2) 512K x 36	NONE	NONE
6MB	(2) 256K x 36	(2) 256K x 36	(2) 256K x 36
6MB	(2) 512K x 36	(2) 256K x 36	NONE
8MB	(2) 512K x 36	(2) 256K x 36	(2) 256K x 36
8MB	(2) 512K x 36	(2) 512K x 36	NONE
8MB	(2) 1M x 36	NONE	NONE
10MB	(2) 512K x 36	(2) 512K x 36	(2) 256K x 36
10MB	(2) 1M x 36	(2) 256K x 36	NONE
12MB	(2) 1M x 36	(2) 256K x 36	(2) 256K x 36
12MB	(2) 1M x 36	(2) 512K x 36	NONE
14MB	(2) 1M x 36	(2) 512K x 36	(2) 256K x 36
16MB	(2) 1M x 36	(2) 1M x 36	NONE
16MB	(2) 2M x 36	NONE	NONE
18MB	(2) 1M x 36	(2) 1M x 36	(2) 256K x 36
18MB	(2) 2M x 36	(2) 256K x 36	NONE
20MB	(2) 2M x 36	(2) 256K x 36	(2) 256K x 36
24MB	(2) 1M x 36	(2) 1M x 36	(2) 1M x 36
24MB	(2) 2M x 36	(2) 1M x 36	NONE
26MB	(2) 2M x 36	(2) 1M x 36	(2) 256K x 36
32MB	(2) 2M x 36	(2) 1M x 36	(2) 1M x 36
32MB	(2) 2M x 36	(2) 2M x 36	NONE
32MB	(2) 4M x 36	NONE	NONE
34MB	(2) 4M x 36	(2) 256K x 36	NONE
36MB	(2) 4M x 36	(2) 256K x 36	(2) 256K x 36
36MB	(2) 4M x 36	(2) 512K x 36	NONE

Continued on next page...

# ACER, INC.

## PI8G

... continued from previous page

DRAM CONFIGURATION (CON'T)			
Size	Bank 0	Bank 1	Bank 2
38MB	(2) 4M x 36	(2) 512K x 36	(2) 256K x 36
40MB	(2) 2M x 36	(2) 2M x 36	(2) 1M x 36
40MB	(2) 4M x 36	(2) 1M x 36	NONE
42MB	(2) 4M x 36	(2) 1M x 36	(2) 256K x 36
48MB	(2) 4M x 36	(2) 1M x 36	(2) 1M x 36
64MB	(2) 4M x 36	(2) 4M x 36	NONE
64MB	(2) 8M x 36	NONE	NONE
66MB	(2) 4M x 36	(2) 4M x 36	(2) 256K x 36
66MB	(2) 8M x 36	(2) 256K x 36	NONE
68MB	(2) 8M x 36	(2) 256K x 36	(2) 256K x 36
68MB	(2) 8M x 36	(2) 512K x 36	NONE
70MB	(2) 8M x 36	(2) 512K x 36	(2) 256K x 36
72MB	(2) 4M x 36	(2) 4M x 36	(2) 1M x 36
72MB	(2) 8M x 36	(2) 1M x 36	NONE
74MB	(2) 8M x 36	(2) 1M x 36	(2) 256K x 36
80MB	(2) 8M x 36	(2) 1M x 36	(2) 1M x 36
80MB	(2) 8M x 36	(2) 2M x 36	NONE
82MB	(2) 8M x 36	(2) 2M x 36	(2) 256K x 36
88MB	(2) 8M x 36	(2) 2M x 36	(2) 1M x 36
96MB	(2) 4M x 36	(2) 4M x 36	(2) 4M x 36
96MB	(2) 8M x 36	(2) 4M x 36	NONE
98MB	(2) 8M x 36	(2) 4M x 36	(2) 256K x 36
104MB	(2) 8M x 36	(2) 4M x 36	(2) 1M x 36
128MB	(2) 8M x 36	(2) 4M x 36	(2) 4M x 36
128MB	(2) 8M x 36	(2) 8M x 36	NONE
130MB	(2) 8M x 36	(2) 8M x 36	(2) 256K x 36
136MB	(2) 8M x 36	(2) 8M x 36	(2) 1M x 36
160MB	(2) 8M x 36	(2) 8M x 36	(2) 4M x 36

CACHE CONFIGURATION		
Size	Bank 0	TAG
256KB	(8) 32K x 8	(1) 32K x 8
512KB	(8) 64K x 8	(1) 32K x 8
1MB	(8) 128K x 8	(1) 32K x 8

CACHE JUMPER CONFIGURATION		
Size	JP5	JP6
256KB	pins 1 & 2 closed	pins 1 & 2 closed
512KB	pins 2 & 3 closed	pins 1 & 2 closed
1MB	pins 2 & 3 closed	pins 2 & 3 closed

Continued on next page...

ACER, INC.  
PI8G

... continued from previous page

CPU SPEED CONFIGURATION	
Speed	JP10
60MHz	pins 1 & 2 closed
66MHz	pins 1 & 2, 3 & 4 closed

DMA CONFIGURATION		
DMA	JP2	JP3
DMA 1	pins 2 & 3 closed	pins 2 & 3 closed
DMA 3	pins 1 & 2 closed	pins 1 & 2 closed