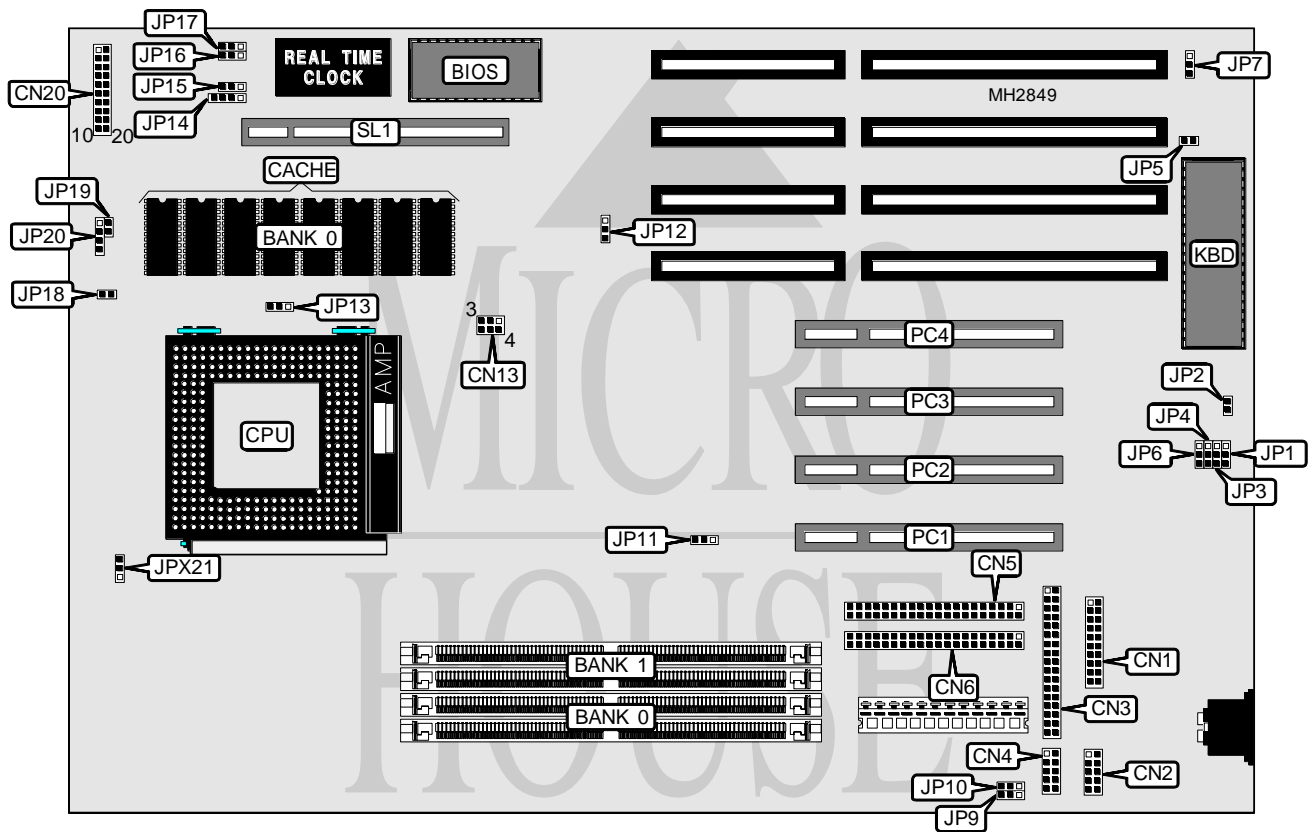


ACER, INC. PI30

Processor	Pentium
Processor Speed	75/90/100/120MHz
Chip Set	Unidentified
Max. Onboard DRAM	128MB
Cache	256/512KB
BIOS	Unidentified
Dimensions	330mm x 218mm
I/O Options	Parallel port, serial ports (2), 32-bit PCI slots (4), floppy drive interface, IDE interfaces (2)
NPU Options	None



CONNECTIONS			
Purpose	Location	Purpose	Location
Parallel port	CN1	Turbo LED	CN20 pins 12 - 13
Serial port 2	CN2	Turbo switch	CN20 pins 15 - 17
Floppy drive interface	CN3	Reset switch	CN20 pins 19 - 20
Serial port 1	CN4	External battery	JP14
IDE interface 1	CN5	Chassis fan power	JP18
IDE interface 2	CN6	IDE interface LED	JP20
Power LED & keylock	CN20 pins 1 - 5	32-bit PCI slots	PC1 - PC4
Speaker	CN20 pins 7 - 10	External cache slot	SL1

Continued on next page. . .

ACER, INC.
PI30

... continued from previous page

USER CONFIGURABLE SETTINGS		
Function	Jumper	Position
í Factory configured - do not alter	JP1	Open
í ECP function disabled	JP2	Open
ECP function enabled	JP2	Closed
í Keyboard controller IRQ12 disabled	JP5	Open
Keyboard controller IRQ12 enabled	JP5	Closed
í SMC 665 enabled	JP6	pins 1 & 2 closed
SMC 665 disabled	JP6	pins 2 & 3 closed
í Password enabled	JP7	pins 1 & 2 closed
Password disabled	JP7	pins 2 & 3 closed
í Factory configured - do not alter	JP9	Closed
í Factory configured - do not alter	JP10	Closed
í Factory configured - do not alter	JP12	pins 2 & 3 closed
í CMOS memory normal operation	JP15	pins 2 & 3 closed
CMOS memory clear	JP15	pins 1 & 2 closed
í Factory configured - do not alter	JP16	pins 1 & 2 closed
í Factory configured - do not alter	JP17	Open
í Factory configured - do not alter	JP19	Closed
í CPU type select VR or standard	JPX21	pins 1 & 2 closed
CPU type select VRE	JPX21	pins 2 & 3 closed

DRAM CONFIGURATION		
Size	Bank 0	Bank 1
8MB	(2) 1M x 36	NONE
16MB	(2) 1M x 36	(2) 1M x 36
16MB	(2) 2M x 36	NONE
24MB	(2) 2M x 36	(2) 1M x 36
32MB	(2) 2M x 36	(2) 2M x 36
32MB	(2) 4M x 36	NONE
40MB	(2) 4M x 36	(2) 1M x 36
48MB	(2) 4M x 36	(2) 2M x 36
64MB	(2) 4M x 36	(2) 4M x 36
64MB	(2) 8M x 36	NONE
72MB	(2) 8M x 36	(2) 1M x 36
80MB	(2) 8M x 36	(2) 2M x 36
96MB	(2) 8M x 36	(2) 4M x 36
128MB	(2) 8M x 36	(2) 8M x 36

CACHE CONFIGURATION		
Size	Bank 0	SL1
256KB	(8) 32K x 8	NONE
512KB	(8) 32K x 8	External cache card installed

Continued on next page. . .

ACER, INC.
PI30

... continued from previous page

CPU SPEED CONFIGURATION			
Speed	JP11	JP13	CN13
75MHz	pins 1 & 2 closed	pins 2 & 3 closed	pins 1 & 4, 2 & 5 closed
90MHz	pins 2 & 3 closed	pins 1 & 2 closed	pins 1 & 4, 3 & 6 closed
100MHz	pins 2 & 3 closed	pins 1 & 2 closed	pins 2 & 5 closed
120MHz	pins 2 & 3 closed	pins 2 & 3 closed	pins 1 & 4, 3 & 6 closed

DRQ/DACK CONFIGURATION		
DRQ/DACK	JP3	JP4
DRQ3/DACK3	pins 1 & 2 closed	pins 1 & 2 closed
DRQ1/DACK1	pins 2 & 3 closed	pins 2 & 3 closed