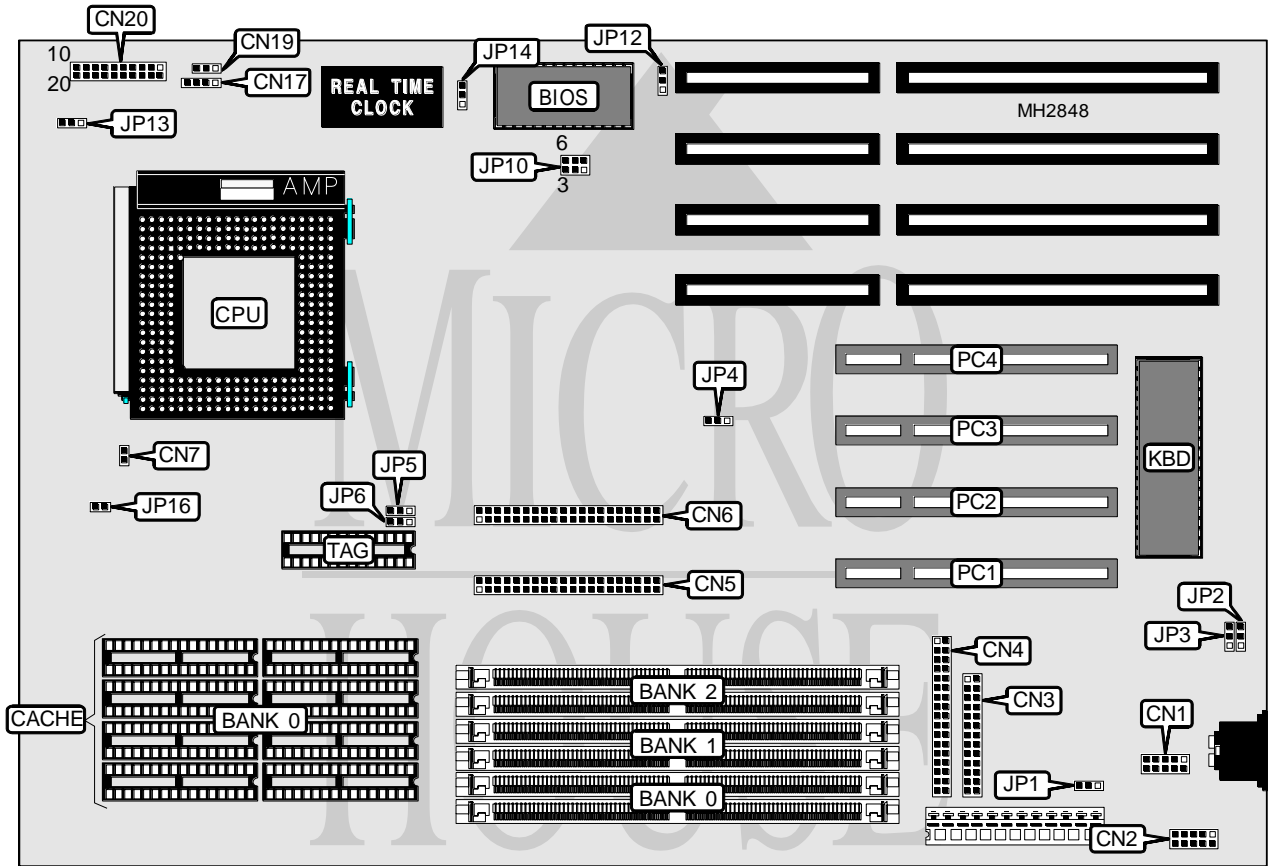


**SIEMENS NIXDORF INFORMATIONSSYSTEME AG**  
**S26361-D842**  
**ACER, INC.**  
**PI16**

**Processor** Pentium  
**Processor Speed** 75/90/100MHz  
**Chip Set** ALI  
**Max. Onboard DRAM** 160MB  
**Cache** 256/512/1024KB  
**BIOS** Phoenix  
**Dimensions** 330mm x 218mm  
**I/O Options** Parallel port, serial ports (2), 32-bit PCI slots (4), green PC connector, floppy drive interface, IDE interfaces (2)  
**NPU Options** None



CONNECTIONS			
Purpose	Location	Purpose	Location
Serial port 1	CN1	Green PC connector	CN19
Serial port 2	CN2	Power LED & keylock	CN20 pins 1 - 5
Parallel port	CN3	Speaker	CN20 pins 7 - 10
Floppy drive interface	CN4	Green PC LED	CN20 pins 12 - 13
IDE interface 1	CN5	Turbo switch	CN20 pins 15 - 17
IDE interface 2	CN6	Reset switch	CN20 pins 19 - 20
Chassis fan power	CN7	32-bit PCI slots	PC1 - PC4
IDE interface LED	CN17		



SIEMENS NIXDORF INFORMATIONSSYSTEME AG  
 S26361-D842  
 ACER, INC.  
 P I 1 6

... continued from previous page

USER CONFIGURABLE SETTINGS		
Function	Jumper	Position
í On board I/O enabled	JP1	pins 1 & 2 closed
On board I/O disabled	JP1	pins 2 & 3 closed
í IDE interface enabled	JP4	pins 1 & 2 closed
IDE interface disabled	JP4	pins 2 & 3 closed
í BIOS type select Flash BIOS	JP12	pins 1 & 2 closed
BIOS type select EPROM	JP12	pins 2 & 3 closed
í CMOS memory normal operation	JP14	pins 2 & 3 closed
CMOS memory clear	JP14	pins 1 & 2 closed

DRAM CONFIGURATION			
Size	Bank 0	Bank 1	Bank 2
4MB	(2) 256K x 36	(2) 256K x 36	NONE
4MB	(2) 512K x 36	NONE	NONE
6MB	(2) 256K x 36	(2) 256K x 36	(2) 256K x 36
6MB	(2) 512K x 36	(2) 256K x 36	NONE
8MB	(2) 512K x 36	(2) 256K x 36	(2) 256K x 36
8MB	(2) 512K x 36	(2) 512K x 36	NONE
8MB	(2) 1M x 36	NONE	NONE
10MB	(2) 512K x 36	(2) 512K x 36	(2) 256K x 36
10MB	(2) 1M x 36	(2) 256K x 36	NONE
12MB	(2) 1M x 36	(2) 256K x 36	(2) 256K x 36
12MB	(2) 1M x 36	(2) 512K x 36	NONE
14MB	(2) 1M x 36	(2) 512K x 36	(2) 256K x 36
16MB	(2) 1M x 36	(2) 1M x 36	NONE
16MB	(2) 2M x 36	NONE	NONE
18MB	(2) 1M x 36	(2) 1M x 36	(2) 256K x 36
18MB	(2) 2M x 36	(2) 256K x 36	NONE
20MB	(2) 2M x 36	(2) 256K x 36	(2) 256K x 36
24MB	(2) 1M x 36	(2) 1M x 36	(2) 1M x 36
24MB	(2) 2M x 36	(2) 1M x 36	NONE
26MB	(2) 2M x 36	(2) 1M x 36	(2) 256K x 36
32MB	(2) 2M x 36	(2) 1M x 36	(2) 1M x 36
32MB	(2) 2M x 36	(2) 2M x 36	NONE
32MB	(2) 4M x 36	NONE	NONE
34MB	(2) 4M x 36	(2) 256K x 36	NONE
36MB	(2) 4M x 36	(2) 256K x 36	(2) 256K x 36
36MB	(2) 4M x 36	(2) 512K x 36	NONE
38MB	(2) 4M x 36	(2) 512K x 36	(2) 256K x 36
40MB	(2) 2M x 36	(2) 2M x 36	(2) 1M x 36
40MB	(2) 4M x 36	(2) 1M x 36	NONE
42MB	(2) 4M x 36	(2) 1M x 36	(2) 256K x 36
48MB	(2) 4M x 36	(2) 1M x 36	(2) 1M x 36
64MB	(2) 4M x 36	(2) 4M x 36	NONE



SIEMENS NIXDORF INFORMATIONSSYSTEME AG  
 S26361-D842  
 ACER, INC.  
 P I 1 6

... continued from previous page

DRAM CONFIGURATION (CON'T)			
Size	Bank 0	Bank 1	Bank 2
64MB	(2) 8M x 36	NONE	NONE
66MB	(2) 4M x 36	(2) 4M x 36	(2) 256K x 36
66MB	(2) 8M x 36	(2) 256K x 36	NONE
68MB	(2) 8M x 36	(2) 256K x 36	(2) 256K x 36
68MB	(2) 8M x 36	(2) 512K x 36	NONE
70MB	(2) 8M x 36	(2) 512K x 36	(2) 256K x 36
72MB	(2) 4M x 36	(2) 4M x 36	(2) 1M x 36
72MB	(2) 8M x 36	(2) 1M x 36	NONE
74MB	(2) 8M x 36	(2) 1M x 36	(2) 256K x 36
80MB	(2) 8M x 36	(2) 1M x 36	(2) 1M x 36
80MB	(2) 8M x 36	(2) 2M x 36	NONE
82MB	(2) 8M x 36	(2) 2M x 36	(2) 256K x 36
88MB	(2) 8M x 36	(2) 2M x 36	(2) 1M x 36
96MB	(2) 4M x 36	(2) 4M x 36	(2) 4M x 36
96MB	(2) 8M x 36	(2) 4M x 36	NONE
98MB	(2) 8M x 36	(2) 4M x 36	(2) 256K x 36
104MB	(2) 8M x 36	(2) 4M x 36	(2) 1M x 36
128MB	(2) 8M x 36	(2) 4M x 36	(2) 4M x 36
128MB	(2) 8M x 36	(2) 8M x 36	NONE
130MB	(2) 8M x 36	(2) 8M x 36	(2) 256K x 36
136MB	(2) 8M x 36	(2) 8M x 36	(2) 1M x 36
160MB	(2) 8M x 36	(2) 8M x 36	(2) 4M x 36

CACHE CONFIGURATION		
Size	Bank 0	TAG
256KB	(8) 32K x 8	(1) 8K x 8
512KB	(8) 64K x 8	(1) 16K x 8
1MB	(8) 128K x 8	(1) 32K x 8

CACHE JUMPER CONFIGURATION		
Size	JP5	JP6
256KB	pins 1 & 2 closed	pins 1 & 2 closed
512KB	pins 2 & 3 closed	pins 1 & 2 closed
1MB	pins 2 & 3 closed	pins 2 & 3 closed

CPU SPEED CONFIGURATION	
Speed	JP10
75MHz	pins 1 & 2, 4 & 5 closed
90MHz	pins 2 & 3, 4 & 5 closed
100MHz	pins 2 & 3, 5 & 6 closed

Continued on next page. ...

SIEMENS NIXDORF INFORMATIONSSYSTEME AG  
 S26361-D842  
 ACER, INC.  
 P I 1 6

... continued from previous page

CPU SPEED CONFIGURATION	
Speed	JP13
1.5x	pins 1 & 2 closed
2x	pins 2 & 3 closed

CPU VOLTAGE CONFIGURATION	
Voltage	JP16
3.4v	Open
3.55v	Closed

DRQ/DACK CONFIGURATION		
DRQ/DACK	JP2	JP3
DRQ3/DACK3	pins 1 & 2 closed	pins 1 & 2 closed
DRQ1/DRQ1	pins 2 & 3 closed	pins 2 & 3 closed