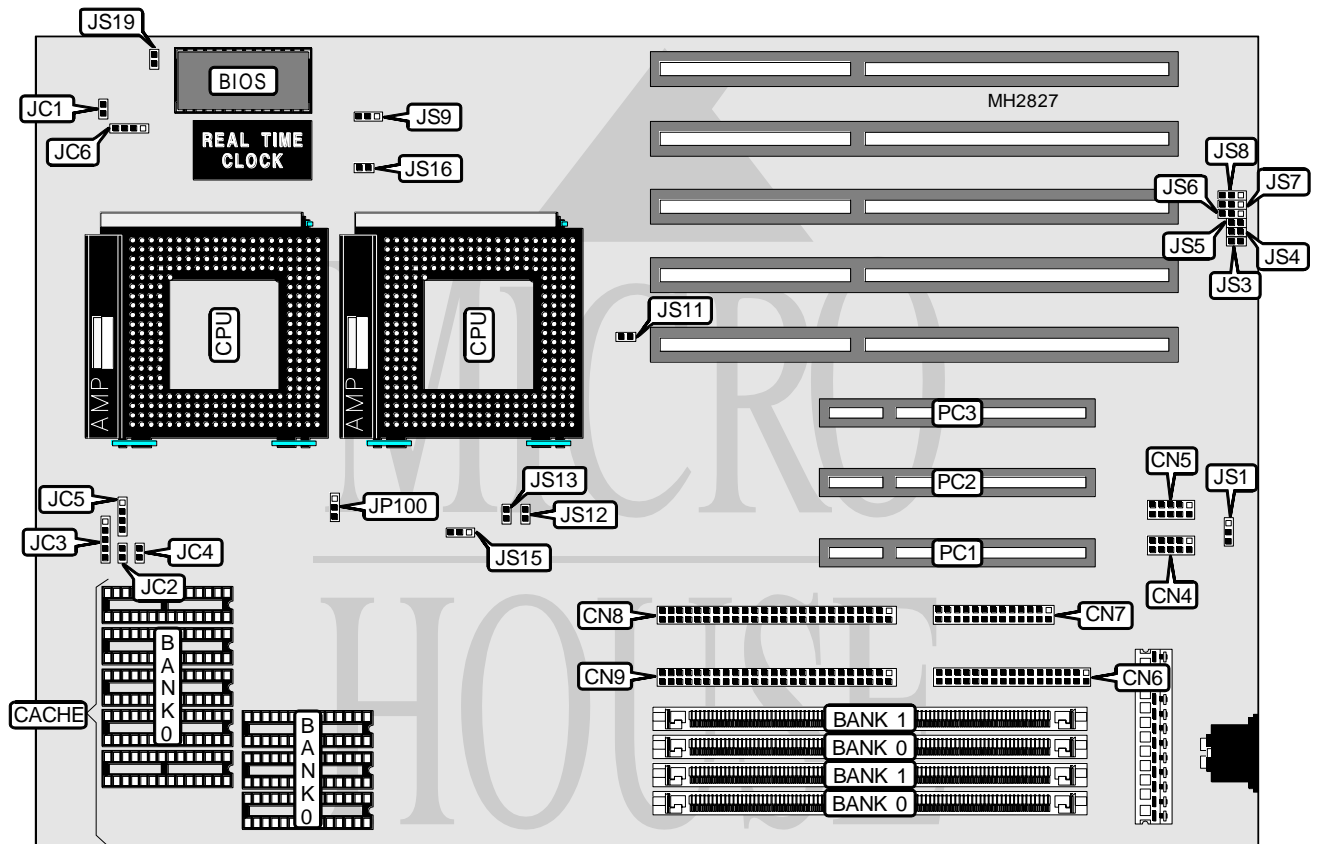


ADVANCED INTEGRATION RESEARCH, INC.

54CDP REV. 1.2 D

Processor	Pentium
Processor Speed	75/90/120MHz
Chip Set	Intel
Max. Onboard DRAM	512MB
Cache	256/512KB
BIOS	AMI
Dimensions	330mm x 218mm
I/O Options	32-bit PCI slots (3), floppy drive interface, SCSI-2 wide interface SCSI-2 interface, parallel port, serial ports (2)
NPU Options	None



CONNECTIONS			
Purpose	Location	Purpose	Location
Serial port 1	CN4	Turbo LED	JC2
Serial port 2	CN5	Power LED & keylock	JC3
Floppy drive interface	CN6	Turbo switch	JC4
Parallel port	CN7	SCSI interface LED	JC5
SCSI-2 interface	CN8	Speaker	JC6
SCSI-2 wide interface	CN9	32-bit PCI slots	PC1 - PC3
Reset switch	JC1		

Continued on next page. . .

ADVANCED INTEGRATION RESEARCH, INC.

54CDP REV. 1.2D

... continued from previous page

USER CONFIGURABLE SETTINGS		
Function	Jumper	Position
í CMOS memory normal operation	JS3	Open
CMOS memory clear	JS3	Closed
í Flash BIOS programming mode select normal operation	JS9	pins 2 & 3 closed
Flash BIOS programming mode select programming mode	JS9	pins 1 & 2 closed
í Parallel port IRQ select IRQ7	JS6	pins 2 & 3 closed
Parallel port IRQ select IRQ5	JS6	pins 1 & 2 closed
í Single Pentium CPU installed	JS13	Closed
Dual Pentium CPU's installed	JS13	Open
í Monitor type select monochrome/EGA/VGA	JS16	Closed
Monitor type select CGA	JS16	Open

DRAM CONFIGURATION		
Size	Bank 0	Bank 1
2MB	(2) 256K x 36	NONE
4MB	(2) 256K x 36	(2) 256K x 36
4MB	(2) 512K x 36	NONE
6MB	(2) 256K x 36	(2) 512K x 36
8MB	(2) 512K x 36	(2) 512K x 36
8MB	(2) 1M x 36	NONE
10MB	(2) 256K x 36	(2) 1M x 36
12MB	(2) 512K x 36	(2) 1M x 36
16MB	(2) 1M x 36	(2) 1M x 36
16MB	(2) 2M x 36	NONE
18MB	(2) 256K x 36	(2) 2M x 36
20MB	(2) 512K x 36	(2) 2M x 36
24MB	(2) 1M x 36	(2) 2M x 36
32MB	(2) 2M x 36	(2) 2M x 36
32MB	(2) 4M x 36	NONE
34MB	(2) 256K x 36	(2) 4M x 36
36MB	(2) 512K x 36	(2) 4M x 36
40MB	(2) 1M x 36	(2) 4M x 36
48MB	(2) 2M x 36	(2) 4M x 36
64MB	(2) 4M x 36	(2) 4M x 36
64MB	(2) 8M x 36	NONE
66MB	(2) 256K x 36	(2) 8M x 36
68MB	(2) 512K x 36	(2) 8M x 36
72MB	(2) 1M x 36	(2) 8M x 36
80MB	(2) 2M x 36	(2) 8M x 36
96MB	(2) 4M x 36	(2) 8M x 36
128MB	(2) 8M x 36	(2) 8M x 36
256MB	(2) 16M x 36	(2) 16M x 36
512MB	(2) 32M x 36	(2) 32M x 36

Continued on next page...

ADVANCED INTEGRATION RESEARCH, INC.
54CDP REV. 1.2D

... continued from previous page

CACHE CONFIGURATION	
Size	Bank 0
256KB	(8) 32K x 8
512KB	(8) 64K x 8

CACHE JUMPER CONFIGURATION	
Size	JS15
256KB	pins 1 & 2 closed
512KB	pins 2 & 3 closed

CPU SPEED CONFIGURATION		
Speed	JS12	JS19
75MHz	Open	Open
90MHz	Open	Closed
120MHz	Closed	Closed

CPU VOLTAGE CONFIGURATION	
Voltage	JP100
3.37v	pins 2 & 3 closed
3.53v	pins 1 & 2 closed

ECP MODE CONFIGURATION			
DMA	JS5	JS7	JS8
Normal mode	Open	Open	Open
DMA1	Closed	pins 1 & 2 closed	pins 1 & 2 closed
DMA3	Closed	pins 2 & 3 closed	pins 2 & 3 closed

FLOPPY DRIVE CONFIGURATION		
Type	JS1	JS4
Normal	Open	Open
Enhanced	pins 2 & 3 closed	Closed

SCSI CONFIGURATION	
SCSI type	JS11
8-bit fast SCSI	Open
16-bit fast wide SCSI	Closed
Both 8-bit/16-bit SCSI	Closed