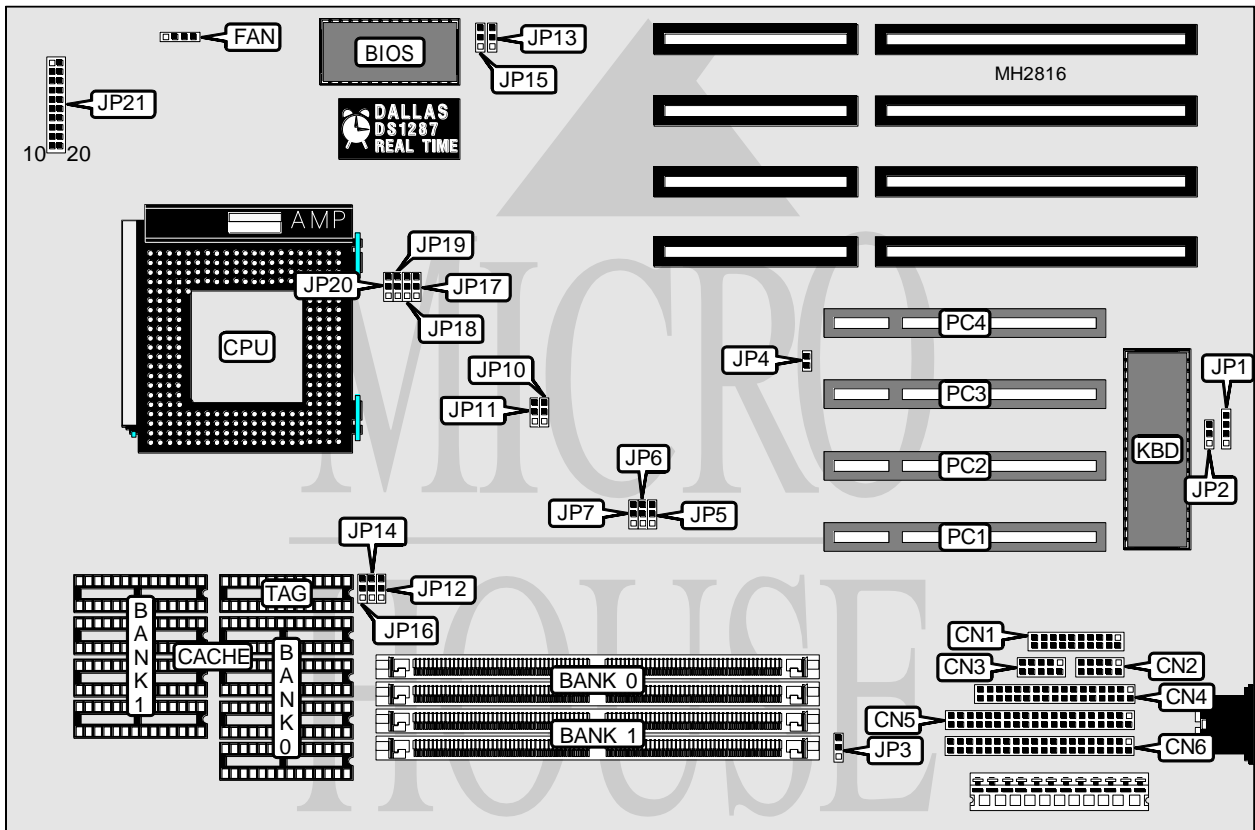


ACER, INC.
 AP5CS
 DUNNET INTERNATIONAL TRADING COMPANY
 Widoshi Pentium 75,90,100,120,133

Processor	Pentium
Processor Speed	75/90/100/120MHz
Chip Set	SIS
Max. Onboard DRAM	128MB
Cache	256/512/1024KB
BIOS	Award
Dimensions	330mm x 218mm
I/O Options	32-bit PCI slots (4), floppy drive interface, green PC connector, IDE interfaces (2), parallel port, serial ports (2)
NPU Options	None



CONNECTIONS			
Purpose	Location	Purpose	Location
Chassis fan power	FAN	Green PC connector	JP4
Parallel port	CN1	Power LED & keylock	JP21 pins 1 - 5
Serial port 2	CN2	Speaker	JP21 pins 7 - 10
Serial port 1	CN3	Turbo LED	JP21 pins 12 - 13
Floppy drive interface	CN4	Turbo switch	JP21 pins 15 - 17
IDE interface (secondary)	CN5	Reset switch	JP21 pins 19 - 20
IDE interface (primary)	CN6	32-bit PCI slots	PC1 - PC4
External battery	JP1		

ACER, INC.

AP5CS

DUNNET INTERNATIONAL TRADING COMPANY

Widoshi Pentium 75,90,100,120,133

... continued from previous page

USER CONFIGURABLE SETTINGS		
Function	Jumper	Position
í CMOS memory normal operation	JP2	pins 2 & 3 closed
CMOS memory clear	JP2	pins 1 & 2 closed
í Factory configured - do not alter	JP3	pins 1 & 2 closed
í Floppy drive interface enabled	JP7	pins 1 & 2 closed
Floppy drive interface disabled	JP7	pins 2 & 3 closed
í Factory configured - do not alter	JP12	pins 2 & 3 closed
í Factory configured - do not alter	JP18	pins 2 & 3 closed
í Factory configured - do not alter	JP19	pins 2 & 3 closed
í Factory configured - do not alter	JP20	pins 1 & 2 closed

DRAM CONFIGURATION		
Size	Bank 0	Bank 1
2MB	(2) 256K x 36	NONE
4MB	(2) 256K x 36	(2) 256K x 36
4MB	(2) 512K x 36	NONE
8MB	(2) 512K x 36	(2) 512K x 36
8MB	(2) 1M x 36	NONE
16MB	(2) 1M x 36	(2) 1M x 36
16MB	(2) 2M x 36	NONE
20MB	(2) 512K x 36	(2) 2M x 36
32MB	(2) 2M x 36	(2) 2M x 36
32MB	(2) 4M x 36	NONE
36MB	(2) 512K x 36	(2) 4M x 36
40MB	(2) 1M x 36	(2) 4M x 36
48MB	(2) 2M x 36	(2) 4M x 36
64MB	(2) 4M x 36	(2) 4M x 36
64MB	(2) 8M x 36	NONE
80MB	(2) 2M x 36	(2) 8M x 36
128MB	(2) 8M x 36	(2) 8M x 36
128MB	(2) 16M x 36	NONE

CACHE CONFIGURATION			
Size	Bank 0	Bank 1	TAG
256KB	(4) 32K x 8	(4) 32K x 8	(1) 32K x 8
512KB	(4) 64K x 8	(4) 64K x 8	(1) 32K x 8
1MB	(4) 128K x 8	(4) 128K x 8	(1) 32K x 8

CACHE JUMPER CONFIGURATION		
Size	JP14	JP16
256KB	pins 1 & 2 closed	pins 1 & 2 closed
512KB	pins 1 & 2 closed	pins 2 & 3 closed
1MB	pins 2 & 3 closed	pins 2 & 3 closed

ACER, INC.
A P 5 C S

... continued from previous page

CPU SPEED CONFIGURATION			
Speed	JP10	JP11	JP17
75MHz	pins 1 & 2 closed	pins 1 & 2 closed	pins 1 & 2 closed
90MHz	pins 1 & 2 closed	pins 2 & 3 closed	pins 1 & 2 closed
100MHz	pins 2 & 3 closed	pins 2 & 3 closed	pins 1 & 2 closed
120MHz	pins 1 & 2 closed	pins 2 & 3 closed	pins 2 & 3 closed

BIOS CONFIGURATION		
Type	JP13	JP15
Flash	pins 1 & 2 closed	pins 1 & 2 closed
EEPROM	pins 2 & 3 closed	pins 2 & 3 closed

DMA CONFIGURATION		
DMA	JP5	JP6
DMA1	pins 2 & 3 closed	pins 2 & 3 closed
DMA3	pins 1 & 2 closed	pins 1 & 2 closed