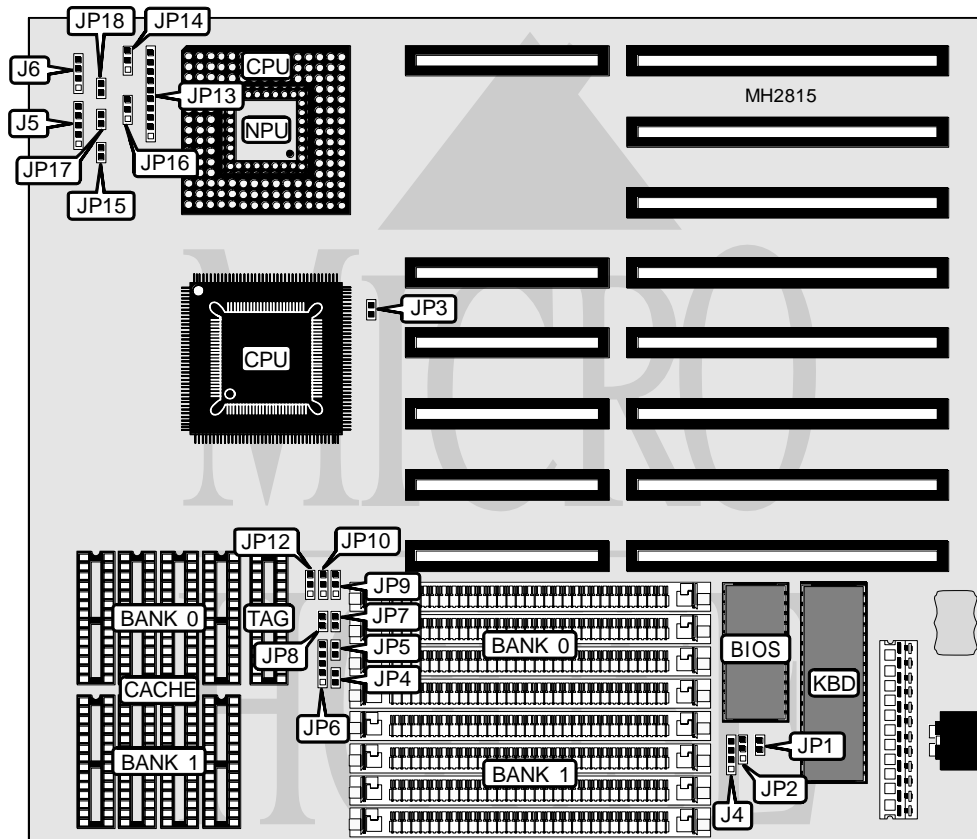


UNIDENTIFIED

3 4 8 6 U

Processor	80386DX/80486SX/80487SX/80486DX/80486DX2
Processor Speed	20/25/33/40/50(internal)/50/66(internal)MHz
Chip Set	UNI
Max. Onboard DRAM	32MB
Cache	32/64/128/256KB
BIOS	AMI
Dimensions	254mm x 218mm
I/O Options	None
NPU Options	80387DX



CONNECTIONS

Purpose	Location	Purpose	Location
External battery	J4	Turbo LED	JP15
Power LED & keylock	J5	Turbo switch	JP17
Speaker	J6	Reset switch	JP18

Continued on next page. . .

UNIDENTIFIED 3486U

... continued from previous page

USER CONFIGURABLE SETTINGS		
Function	Jumper	Position
í Monitor type select color	JP1	Closed
Monitor type select monochrome	JP1	Open
í CMOS memory normal operation	JP2	pins 1 & 2 closed
CMOS memory clear	JP2	pins 2 & 3 closed
í CPU type select all CPU types	JP3	Closed
CPU type select 80386DX only	JP3	Open

DRAM CONFIGURATION		
Size	Bank 0	Bank 1
1MB	(4) 256K x 9	NONE
2MB	(4) 256K x 9	(4) 256K x 9
4MB	(4) 1M x 9	NONE
5MB	(4) 256K x 9	(4) 1M x 9
8MB	(4) 1M x 9	(4) 1M x 9
16MB	(4) 4M x 9	NONE
20MB	(4) 1M x 9	(4) 4M x 9
20MB	(4) 4M x 9	(4) 1M x 9
32MB	(4) 4M x 9	(4) 4M x 9

CACHE CONFIGURATION			
Size	Bank 0	Bank 1	TAG
32KB	(4) 8K x 8	NONE	(1) 8K x 8
64KB	(4) 8K x 8	(4) 8K x 8	(1) 8K x 8
128KB	(4) 32K x 8	NONE	(1) 8K x 8
256KB	(4) 32K x 8	(4) 32K x 8	(1) 32K x 8

CACHE JUMPER CONFIGURATION				
Size	JP5	JP6	JP7	JP8
32KB	Open	pins 2 & 3 closed	Open	Open
64KB	Closed	pins 1 & 2 closed	Open	Open
128KB	Closed	pins 1 & 2, 3 & 4 closed	Closed	Open
256KB	Closed	pins 1 & 2, 4 & 5 closed	Closed	Closed

CPU TYPE CONFIGURATION						
Type	JP4	JP9	JP10	JP12	JP14	JP16
80386	Open	1 & 2	2 & 3	2 & 3	Open	2 & 3
80486	Closed	2 & 3	1 & 2	1 & 2	2 & 3	1 & 2

Note: Pins designated should be in the closed position.

Continued on next page...

UNIDENTIFIED

3486U

... continued from previous page

CPU TYPE CONFIGURATION	
Type	JP13
80386DX	Open
80486SX (PQFP)	Open
80486SX (PGA)	pins 5 & 6, 9 & 10 closed
80487SX	pins 2 & 3, 4 & 5, 6 & 7, 8 & 9 closed
80486DX (PQFP)	Open
80486DX (PGA)	pins 1 & 2, 4 & 5, 6 & 7, 9 & 10 closed
80486DX2	pins 1 & 2, 4 & 5, 6 & 7, 9 & 10 closed