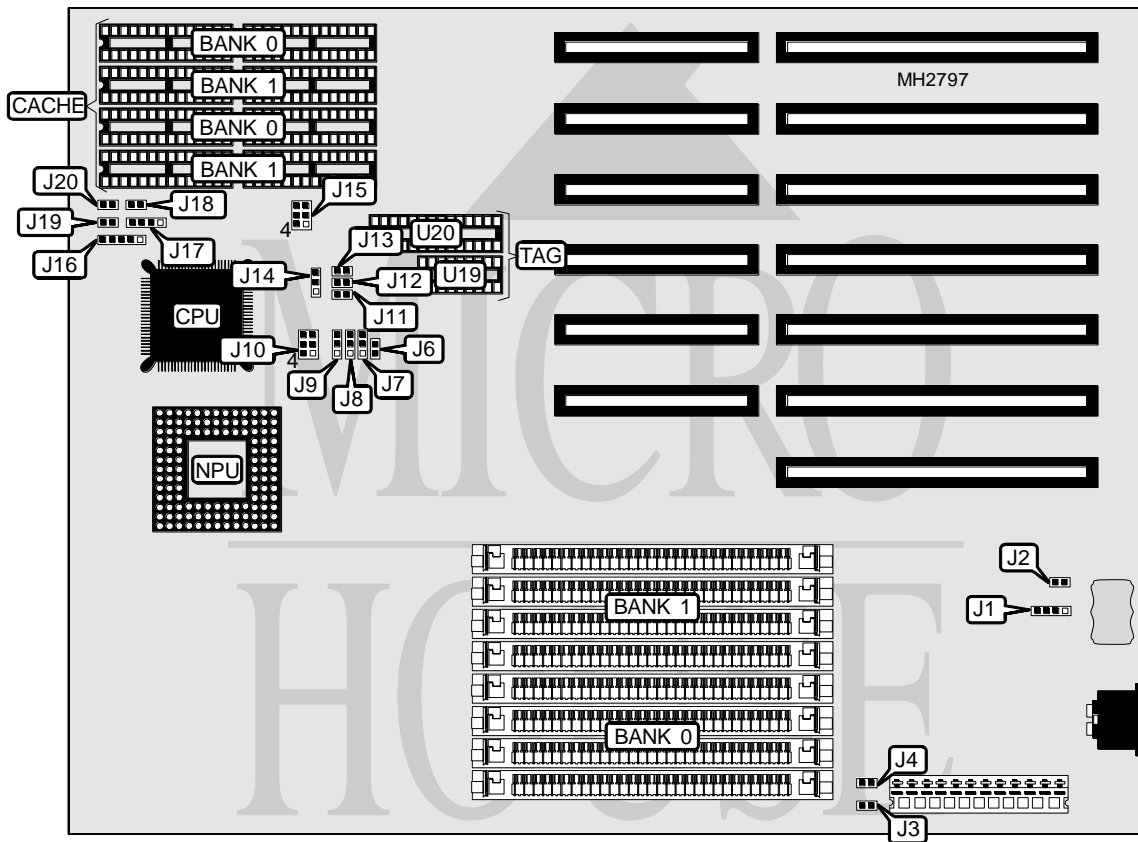


# CHICONY, INC. CH-386-33F/40F

<b>Processor</b>	80386DX
<b>Processor Speed</b>	33/40MHz
<b>Chip Set</b>	OPTI
<b>Max. Onboard DRAM</b>	32MB
<b>Cache</b>	32/64/128/256KB
<b>BIOS</b>	AMI
<b>Dimensions</b>	254mm x 218mm
<b>I/O Options</b>	None
<b>NPU Options</b>	80387DX/3167



CONNECTIONS			
Purpose	Location	Purpose	Location
External battery	J1	Reset switch	J18
Power LED & keylock	J16	Turbo switch	J19
Speaker	J17	Turbo LED	J20

Continued on next page. . .

# CHICONY, INC.

## CH-386-33F/40F

... continued from previous page

### USER CONFIGURABLE SETTINGS

Function	Jumper	Position
í CMOS memory normal operation	J2	Closed
CMOS memory clear	J2	Open
í Monitor type select monochrome	J4	Open
Monitor type select color	J4	Closed

### DRAM CONFIGURATION

Size	Bank 0	Bank 1
1MB	(4) 256K x 9	NONE
2MB	(4) 256K x 9	(4) 256K x 9
4MB	(4) 1M x 9	NONE
5MB	(4) 256K x 9	(4) 1M x 9
8MB	(4) 1M x 9	(4) 1M x 9
16MB	(4) 4M x 9	NONE
17MB	(4) 256K x 9	(4) 4M x 9
20MB	(4) 1M x 9	(4) 4M x 9
32MB	(4) 4M x 9	(4) 4M x 9

### CACHE CONFIGURATION

Size	Bank 0	Bank 1	TAG (U19)	TAG (U20)
32KB	(4) 8K x 8	NONE	(1) 16K x 4	(1) 8K x 8
64KB	(4) 8K x 8	(4) 8K x 8	(1) 16K x 4	(1) 8K x 8
128KB	(4) 32K x 8	NONE	(1) 16K x 4	(1) 8K x 8
256KB	(4) 32K x 8	(4) 32K x 8	(1) 16K x 4	(1) 32K x 8

### CACHE JUMPER CONFIGURATION

Size	J6	J7	J8	J9	J11	J12	J13	J15
32KB	Open	1 & 2	1 & 2	1 & 2	Open	Open	Open	4 & 5
64KB	Open	1 & 2	1 & 2	2 & 3	Closed	Open	Open	1 & 2
128KB	Closed	1 & 2	2 & 3	2 & 3	Closed	Open	Closed	4 & 5
256KB	Closed	2 & 3	2 & 3	2 & 3	Closed	Closed	Closed	5 & 6

Note: Pins designated should be in the closed position.

### CACHE TAG BIT CONFIGURATION

Size	Bit size	J10
32KB	7	Open
32KB	8	pins 1 & 2 closed
64KB	7	Open
64KB	8	pins 5 & 6 closed
128KB	7	Open
128KB	8	pins 4 & 5 closed
256KB	7	Open
256KB	8	pins 2 & 3 closed

Continued on next page. . .

---

CHICONY, INC.

CH-386-33F/40F

... continued from previous page

CACHE TAG BIT CONFIGURATION		
Size	J3	J14
7 bit	Open	pins 1 & 2 closed
8 bit	Closed	pins 2 & 3 closed