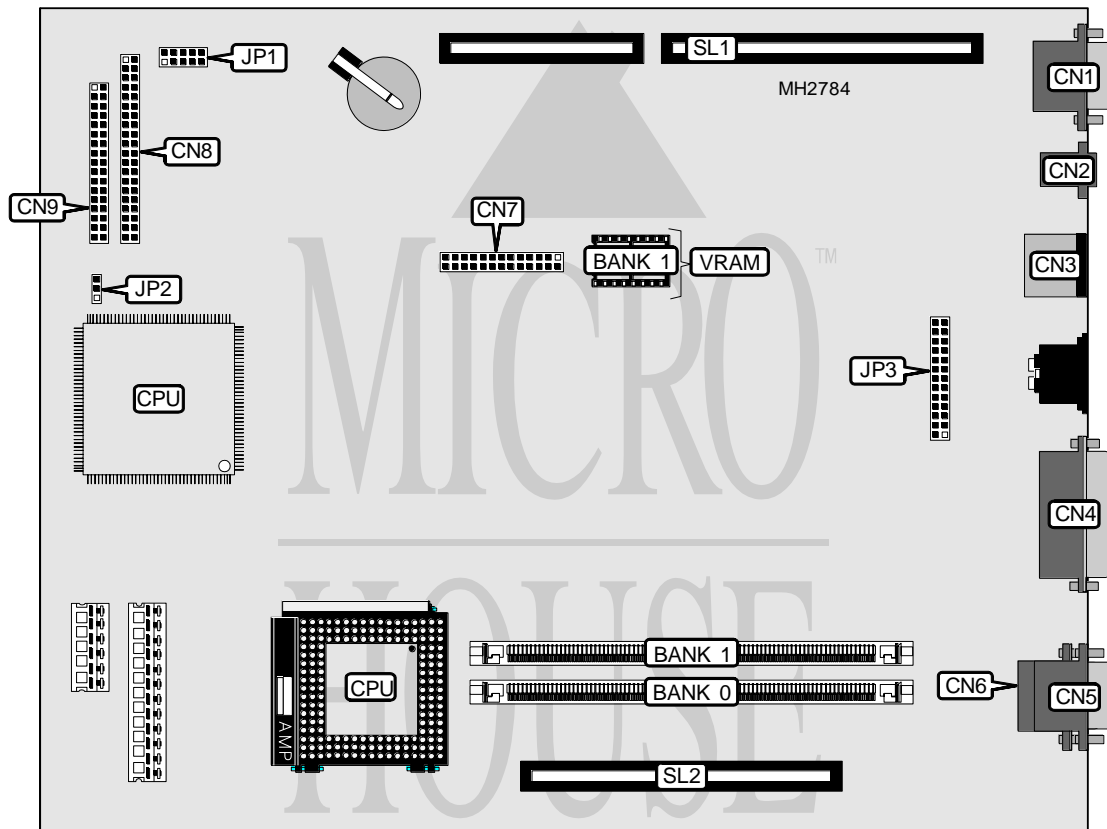


TULIP COMPUTERS

T C 4 0

Processor	80486SX/80486SX2/80486DX/80486DX2/80486DX4/Pentium Overdrive
Processor Speed	33/50/66(internal)/100(internal)MHz
Chip Set	Unidentified
Max. Onboard DRAM	64MB
Cache	256KB (on external cache card)
BIOS	Unidentified
Dimensions	254mm x 218mm
I/O Options	Floppy drive interface, IDE interface, parallel port, PS/2 mouse port, serial ports (2), VGA feature connector, VGA port, ethernet port, cache card slot, riser slot
NPU Options	None



CONNECTIONS			
Purpose	Location	Purpose	Location
VGA port	CN1	IDE interface	CN8
Ethernet port	CN2	Floppy drive interface	CN9
PS/2 mouse port	CN3	Front panel connector	JP1
Parallel port	CN4	Smartport connector	JP3
Serial port 1	CN5	Riser slot	SL1
Serial port 2	CN6	Cache card slot	SL2
VGA feature connector	CN7		

Continued on next page. . .

TULIP COMPUTERS

TC40

... continued from previous page

USER CONFIGURABLE SETTINGS

Function	Jumper	Position
Cache type select write through	JP2	pins 1 & 2 closed
Cache type select write back	JP2	pins 2 & 3 closed

DRAM CONFIGURATION

Size	Bank 0	Bank 1
4MB	(1) 1M x 36	NONE
8MB	(1) 1M x 36	(1) 1M x 36
8MB	(1) 2M x 36	NONE
12MB	(1) 1M x 36	(1) 2M x 36
12MB	(1) 2M x 36	(1) 1M x 36
16MB	(1) 2M x 36	(1) 2M x 36
16MB	(1) 4M x 36	NONE
20MB	(1) 1M x 36	(1) 4M x 36
20MB	(1) 4M x 36	(1) 1M x 36
24MB	(1) 2M x 36	(1) 4M x 36
24MB	(1) 4M x 36	(1) 2M x 36
32MB	(1) 4M x 36	(1) 4M x 36
32MB	(1) 8M x 36	NONE
36MB	(1) 1M x 36	(1) 8M x 36
36MB	(1) 8M x 36	(1) 1M x 36
40MB	(1) 2M x 36	(1) 8M x 36
40MB	(1) 8M x 36	(1) 2M x 36
48MB	(1) 4M x 36	(1) 8M x 36
48MB	(1) 8M x 36	(1) 4M x 36
64MB	(1) 8M x 36	(1) 8M x 36

VRAM CONFIGURATION

Size	Bank 0	Bank 1
1MB	(2) 256K x 16	NONE
2MB	(2) 256K x 16	(2) 256K x 16

Note: The location of Bank 0 is unidentified. Bank 0 is factory installed and is not configurable.

CACHE CONFIGURATION

Note: To use 256KB cache, install cache card in slot SL2.