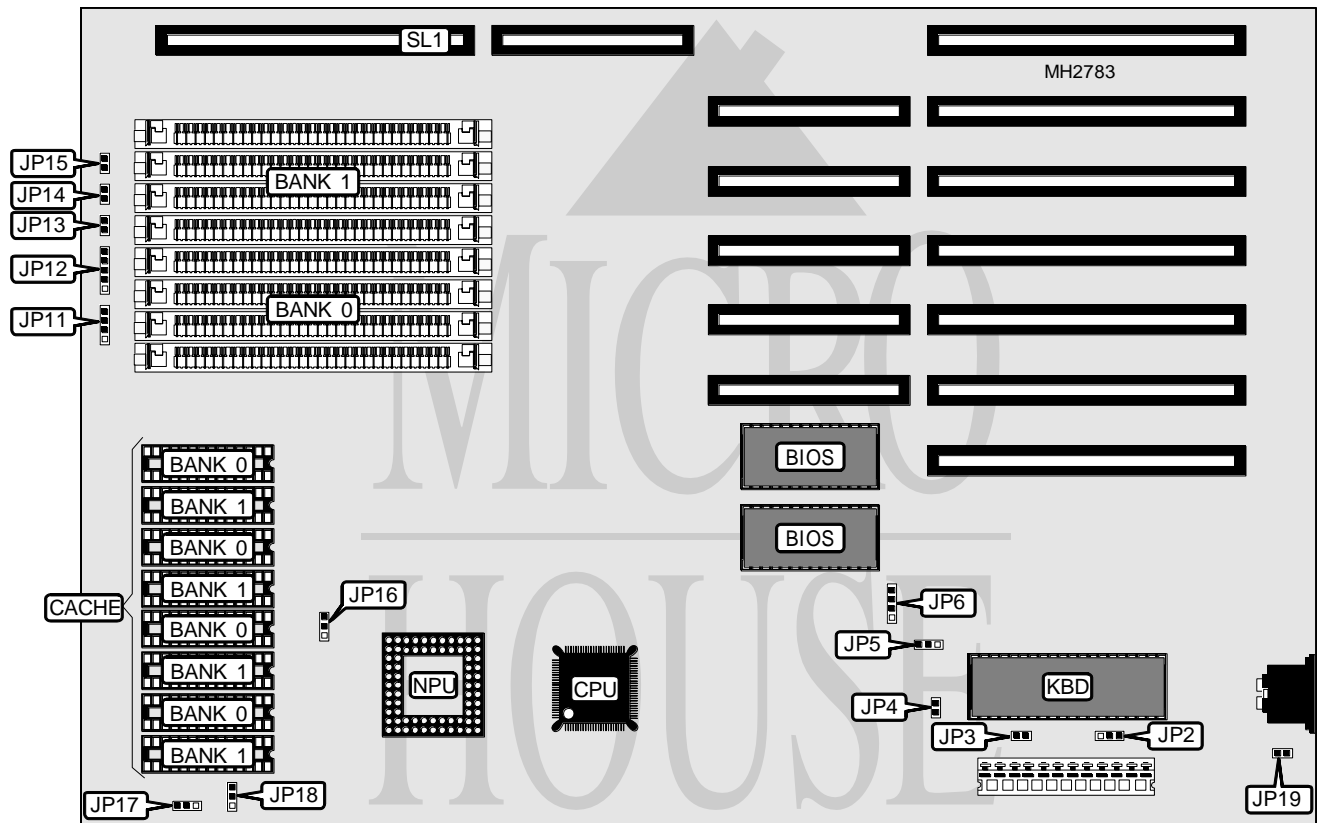


AUVA COMPUTER, INC.

TAM/25-00 TAM/33-00 (M317000/318000)

Processor	80386SX
Processor Speed	25/33MHz
Chip Set	OPTI
Max. Onboard DRAM	16MB (8MB on external memory card)
Cache	32/64KB
BIOS	AMI
Dimensions	330mm x 218mm
I/O Options	External memory card
NPU Options	80387SX/3167



CONNECTIONS			
Purpose	Location	Purpose	Location
External battery	JP6	Turbo LED	JP14
Speaker	JP11	Turbo switch	JP15
Power LED & keylock	JP12	External memory card	SL1
Reset switch	JP13		

Continued on next page. . .

AUVA COMPUTER, INC.

TAM/25-00 TAM/33-00 (M317000/318000)

... continued from previous page

USER CONFIGURABLE SETTINGS		
Function	Jumper	Position
í BIOS type select AMI	JP2	pins 1 & 2 closed
BIOS type select other	JP2	pins 2 & 3 closed
í Monitor type select monochrome	JP3	Open
Monitor type select color	JP3	Closed
í Battery type select internal	JP4	Closed
Battery type select external	JP4	Open
í CMOS memory normal operation	JP5	pins 1 & 2 closed
CMOS memory clear	JP5	pins 2 & 3 closed
í Factory configured - do not alter	JP19	N/A

DRAM CONFIGURATION				
Size	Bank 0	Bank 1	Bank 2	Bank 3
1MB	(4) 256K x 9	NONE	NONE	NONE
2MB	(4) 256K x 9	(4) 256K x 9	NONE	NONE
3MB	(4) 256K x 9	(4) 256K x 9	(4) 256K x 9	NONE
4MB	(4) 256K x 9	(4) 256K x 9	(4) 256K x 9	(4) 256K x 9
4MB	(4) 1M x 9	NONE	NONE	NONE
5MB	(4) 256K x 9	(4) 1M x 9	NONE	NONE
6MB	(4) 256K x 9	(4) 256K x 9	(4) 1M x 9	NONE
8MB	(4) 1M x 9	(4) 1M x 9	NONE	NONE
9MB	(4) 256K x 9	(4) 1M x 9	(4) 1M x 9	NONE
12MB	(4) 1M x 9	(4) 1M x 9	(4) 1M x 9	NONE
13MB	(4) 256K x 9	(4) 1M x 9	(4) 1M x 9	(4) 1M x 9
16MB	(4) 1M x 9	(4) 1M x 9	(4) 1M x 9	(4) 1M x 9

Note: Banks 2 & 3 are located on the external memory card.

CACHE CONFIGURATION		
Size	Bank 0	Bank 1
32KB	(4) 8K x 8	NONE
64KB	(4) 8K x 8	(4) 8K x 8

CACHE JUMPER CONFIGURATION			
Size	JP16	JP17	JP18
32KB	pins 1 & 2 closed	pins 1 & 2 closed	pins 1 & 2 closed
64KB	pins 2 & 3 closed	pins 2 & 3 closed	pins 2 & 3 closed