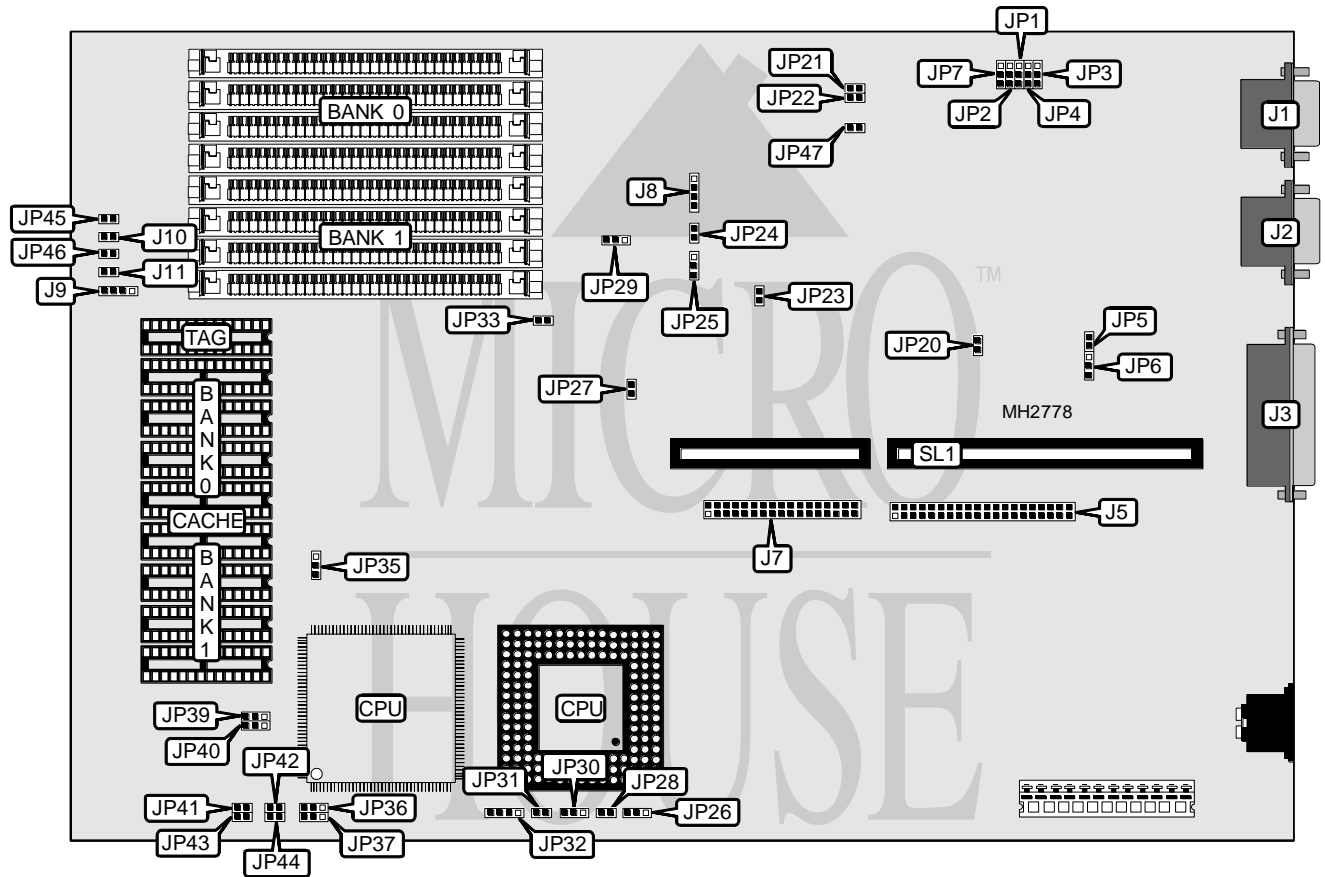


IPC CORPORATION, LTD.

IPC DYNASTY LE/IPC HOMEMAGIC (MB486LE#51)

<b>Processor</b>	80486SX/ODP486SX/80487SX/ODP486DX/80486DX/80486DX2/Pentium Overdrive
<b>Processor Speed</b>	25/33/50(internal)/66(internal)MHz
<b>Chip Set</b>	UMC
<b>Max. Onboard DRAM</b>	32MB
<b>Cache</b>	64/128/256KB
<b>BIOS</b>	AMI
<b>Dimensions</b>	330mm x 218mm
<b>I/O Options</b>	Floppy drive interface, IDE interface, parallel port, serial ports (2), riser slot
<b>NPU Options</b>	4167 (location unidentified)



CONNECTIONS			
Purpose	Location	Purpose	Location
Serial port 2	J1	Turbo LED	J10
Serial port 1	J2	Reset switch	J11
Parallel port	J3	IDE interface LED	JP20
IDE interface	J5	Power on connector	JP45
Floppy drive interface	J7	Turbo switch	JP46
External battery	J8	Riser Card	SL1
Speaker	J9		

Continued on next page. . .

IPC CORPORATION, LTD.

IPC DYNASTY LE/IPC HOMEMAGIC (MB486LE#51)

... continued from previous page

USER CONFIGURABLE SETTINGS		
Function	Jumper	Position
í IDE interface enabled	JP5	Closed
IDE interface disabled	JP5	Open
í Floppy drive interface enabled	JP6	pins 2 & 3 closed
Floppy drive interface disabled	JP6	pins 1 & 2 closed
í Floppy drive pre comp mode select normal	JP21	Open
Floppy drive pre comp mode select alternate	JP21	Closed
í Floppy drive type select single speed spindle	JP22	Open
Floppy drive type select dual speed spindle	JP22	Closed
í Monitor type select color	JP23	Closed
Monitor type select monochrome	JP23	Open
í Battery type select internal	JP24	Closed
Battery type select external	JP24	Open
í Power good signal detect from board	JP25	pins 1 & 2 closed
Power good signal detect from power supply	JP25	pins 2 & 3 closed
í Factory configured - do not alter	JP27	N/A
í Factory configured - do not alter	JP33	Open
í Weitek not installed	JP35	pins 1 & 2 closed
Weitek installed	JP35	pins 2 & 3 closed
í Factory configured - do not alter	JP47	Open

DRAM CONFIGURATION		
Size	Bank 0	Bank 1
4MB	(4) 1M x 9	NONE
8MB	(4) 1M x 9	(4) 1M x 9
16MB	(4) 4M x 9	NONE
32MB	(4) 4M x 9	(4) 4M x 9

CACHE CONFIGURATION			
Size	Bank 0	Bank 1	TAG
64KB	(4) 8K x 8	(4) 8K x 8	(1) 8K x 8
128KB	(4) 32K x 8	NONE	(1) 8K x 8
256KB	(4) 32K x 8	(4) 32K x 8	(1) 32K x 8

CACHE JUMPER CONFIGURATION								
Size	JP36	JP37	JP39	JP40	JP41	JP42	JP43	JP44
64KB	1 & 2	1 & 2	Open	1 & 2	Open	Open	Open	Open
128KB	2 & 3	1 & 2	1 & 2	2 & 3	Closed	Closed	Open	Open
256KB	2 & 3	2 & 3	2 & 3	1 & 2	Closed	Closed	Closed	Closed

Note: Pins designated should be in the closed position.

Continued on next page...

## IPC CORPORATION, LTD.

## IPC DYNASTY LE/IPC HOMEMAGIC (MB486LE#51)

... continued from previous page

CPU TYPE CONFIGURATION					
Type	JP26	JP28	JP30	JP31	JP32
80486SX (PQFP)	1 & 2	Open	1 & 2	Open	1 & 2, 3 & 4
80486SX (PGA)	2 & 3	Open	Open	Open	2 & 3
ODP486SX	1 & 2	Open	1 & 2	Open	1 & 2, 3 & 4
80487SX	1 & 2	Open	1 & 2	Open	1 & 2, 3 & 4
ODP486DX	2 & 3	Open	2 & 3	Open	1 & 2, 3 & 4
80486DX (PQFP)	1 & 2	Closed	1 & 2	Closed	Open
80486DX (PGA)	2 & 3	Open	2 & 3	Open	1 & 2, 3 & 4
80486DX2	2 & 3	Open	2 & 3	Open	1 & 2, 3 & 4
Pentium Overdrive	1 & 2	Open	1 & 2	Open	1 & 2, 3 & 4

Note: Pins designated should be in the closed position.

PARALLEL PORT CONFIGURATION			
Setting	JP1	JP4	JP29
íLPT2	pins 1 & 2 closed	pins 1 & 2 closed	pins 2 & 3 closed
LPT1	pins 1 & 2 closed	pins 2 & 3 closed	pins 2 & 3 closed
LPT3	pins 2 & 3 closed	pins 1 & 2 closed	pins 1 & 2 closed
Disabled	pins 2 & 3 closed	pins 2 & 3 closed	Open

SERIAL PORT CONFIGURATION			
Setting	JP2	JP3	JP7
COM1 & COM2 enabled	pins 1 & 2 closed	pins 1 & 2 closed	pins 1 & 2 closed
COM1 disabled & COM2 enabled	pins 2 & 3 closed	pins 1 & 2 closed	pins 1 & 2 closed
COM1 enabled & COM2 disabled	pins 1 & 2 closed	pins 2 & 3 closed	pins 1 & 2 closed
COM1 & COM2 disabled	pins 2 & 3 closed	pins 2 & 3 closed	pins 2 & 3 closed