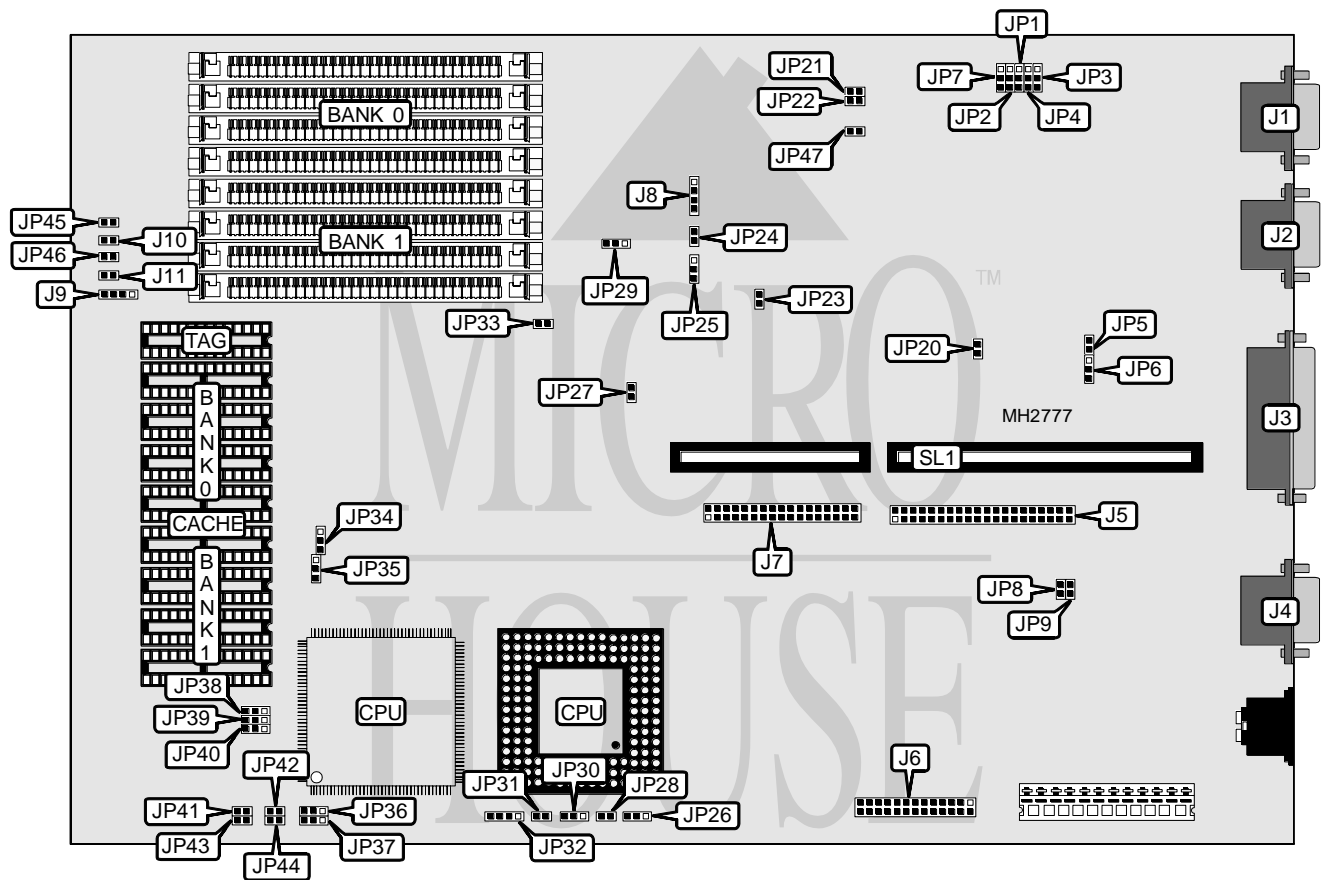


IPC CORPORATION, LTD.

IPC DYNASTY LE (MB486LE#50)

Processor	80486SX/ODP486SX/80487SX/ODP486DX/80486DX/80486DX2/Pentium Overdrive
Processor Speed	25/33/50(internal)/66(internal)MHz
Chip Set	UMC
Max. Onboard DRAM	32MB
Cache	64/128/256KB
BIOS	AMI
Dimensions	330mm x 218mm
I/O Options	Floppy drive interface, IDE interface, parallel port, serial ports (2), VGA feature connector, VGA port, riser slot
NPU Options	None



CONNECTIONS			
Purpose	Location	Purpose	Location
Serial port 2	J1	Speaker	J9
Serial port 1	J2	Turbo LED	J10
Parallel port	J3	Reset switch	J11
VGA port	J4	IDE interface LED	JP20
IDE interface	J5	Power on connector	JP45
VGA feature connector	J6	Turbo switch	JP46
Floppy drive interface	J7	Riser Card	SL1
External battery	J8		

Continued on next page. . .

IPC CORPORATION, LTD.
IPC DYNASTY LE (MB486LE#50)

... continued from previous page

USER CONFIGURABLE SETTINGS		
Function	Jumper	Position
í IDE interface enabled	JP5	Closed
IDE interface disabled	JP5	Open
í Floppy drive interface enabled	JP6	pins 2 & 3 closed
Floppy drive interface disabled	JP6	pins 1 & 2 closed
í Factory configured - do not alter	JP8	Open
í Factory configured - do not alter	JP9	Open
í LOCA# signal select level signal	JP10	pins 1 & 2 closed
LOCA# signal select tri state signal	JP10	pins 2 & 3 closed
í On board VESA video enabled	JP14	pins 2 & 3 closed
On board VESA video disabled	JP14	pins 1 & 2 closed
í Factory configured - do not alter	JP16	N/A
í Floppy drive pre comp mode select normal	JP21	Open
Floppy drive pre comp mode select alternate	JP21	Closed
í Floppy drive type select single speed spindle	JP22	Open
Floppy drive type select dual speed spindle	JP22	Closed
í Monitor type select color	JP23	Closed
Monitor type select monochrome	JP23	Open
í Battery type select internal	JP24	Closed
Battery type select external	JP24	Open
í Power good signal detect from board	JP25	pins 1 & 2 closed
Power good signal detect from power supply	JP25	pins 2 & 3 closed
í Factory configured - do not alter	JP27	N/A
í Factory configured - do not alter	JP33	Open
í Factory configured - do not alter	JP34	N/A
í Factory configured - do not alter	JP35	N/A
í Local bus video enabled	JP38	Open
Local bus video disabled	JP38	pins 1 & 2 closed
í Factory configured - do not alter	JP47	Open

Note: The locations of JP10, JP14, & JP16 are unidentified.

DRAM CONFIGURATION		
Size	Bank 0	Bank 1
4MB	(4) 1M x 9	NONE
8MB	(4) 1M x 9	(4) 1M x 9
16MB	(4) 4M x 9	NONE
32MB	(4) 4M x 9	(4) 4M x 9

CACHE CONFIGURATION			
Size	Bank 0	Bank 1	TAG
64KB	(4) 8K x 8	(4) 8K x 8	(1) 8K x 8
128KB	(4) 32K x 8	NONE	(1) 8K x 8
256KB	(4) 32K x 8	(4) 32K x 8	(1) 32K x 8

Continued on next page. . .

IPC CORPORATION, LTD.
IPC DYNASTY LE (MB486LE#50)

... continued from previous page

CACHE JUMPER CONFIGURATION								
Size	JP36	JP37	JP39	JP40	JP41	JP42	JP43	JP44
64KB	1 & 2	1 & 2	Open	1 & 2	Open	Open	Open	Open
128KB	2 & 3	1 & 2	1 & 2	2 & 3	Closed	Closed	Open	Open
256KB	2 & 3	2 & 3	2 & 3	1 & 2	Closed	Closed	Closed	Open

Note: Pins designated should be in the closed position.

CPU TYPE CONFIGURATION					
Type	JP26	JP28	JP30	JP31	JP32
80486SX (PQFP)	1 & 2	Open	1 & 2	Open	1 & 2, 3 & 4
80486SX (PGA)	2 & 3	Open	Open	Open	2 & 3
ODP486SX	1 & 2	Open	1 & 2	Open	1 & 2, 3 & 4
80487SX	1 & 2	Open	1 & 2	Open	1 & 2, 3 & 4
ODP486DX	2 & 3	Open	2 & 3	Open	1 & 2, 3 & 4
80486DX (PQFP)	1 & 2	Closed	1 & 2	Closed	Open
80486DX (PGA)	2 & 3	Open	2 & 3	Open	1 & 2, 3 & 4
80486DX2	2 & 3	Open	2 & 3	Open	1 & 2, 3 & 4
Pentium Overdrive	1 & 2	Open	1 & 2	Open	1 & 2, 3 & 4

Note: Pins designated should be in the closed position.

PARALLEL PORT CONFIGURATION			
Setting	JP1	JP4	JP29
LPT2	pins 1 & 2 closed	pins 1 & 2 closed	pins 2 & 3 closed
LPT1	pins 1 & 2 closed	pins 2 & 3 closed	pins 2 & 3 closed
LPT3	pins 2 & 3 closed	pins 1 & 2 closed	pins 1 & 2 closed
Disabled	pins 2 & 3 closed	pins 2 & 3 closed	Open

SERIAL PORT CONFIGURATION			
Setting	JP2	JP3	JP7
COM1 & COM2 enabled	pins 1 & 2 closed	pins 1 & 2 closed	pins 1 & 2 closed
COM1 disabled & COM2 enabled	pins 2 & 3 closed	pins 1 & 2 closed	pins 1 & 2 closed
COM1 enabled & COM2 disabled	pins 1 & 2 closed	pins 2 & 3 closed	pins 1 & 2 closed
COM1 & COM2 disabled	pins 2 & 3 closed	pins 2 & 3 closed	pins 2 & 3 closed

VIDEO CONFIGURATION				
Resolution	Hz	JP17	JP18	JP19
640 x 480	60Hz	pins 1 & 2 closed	pins 1 & 2 closed	pins 1 & 2 closed
640 x 480	70Hz	pins 1 & 2 closed	pins 2 & 3 closed	pins 2 & 3 closed
800 x 600	60Hz	pins 1 & 2 closed	pins 2 & 3 closed	pins 1 & 2 closed
800 x 600	70Hz	pins 1 & 2 closed	pins 2 & 3 closed	pins 2 & 3 closed
800 x 600	56Hz	pins 2 & 3 closed	pins 1 & 2 closed	pins 1 & 2 closed
1024 x 768	43Hz	pins 2 & 3 closed	pins 1 & 2 closed	pins 2 & 3 closed
1024 x 768	60Hz	pins 2 & 3 closed	pins 2 & 3 closed	pins 1 & 2 closed
1024 x 768	70Hz	pins 2 & 3 closed	pins 2 & 3 closed	pins 2 & 3 closed

Note: The location of the above jumpers is unidentified.

Continued on next page. . .

IPC CORPORATION, LTD.
IPC DYNASTY LE (MB486LE#50)

... continued from previous page

VRAM MEMORY CONFIGURATION			
Size	JP11	JP12	JP13
512KB	pins 2 & 3 closed	pins 2 & 3 closed	pins 2 & 3 closed
1MB	pins 2 & 3 closed	pins 1 & 2 closed	pins 2 & 3 closed
Note: The location of the above jumpers is unidentified.			