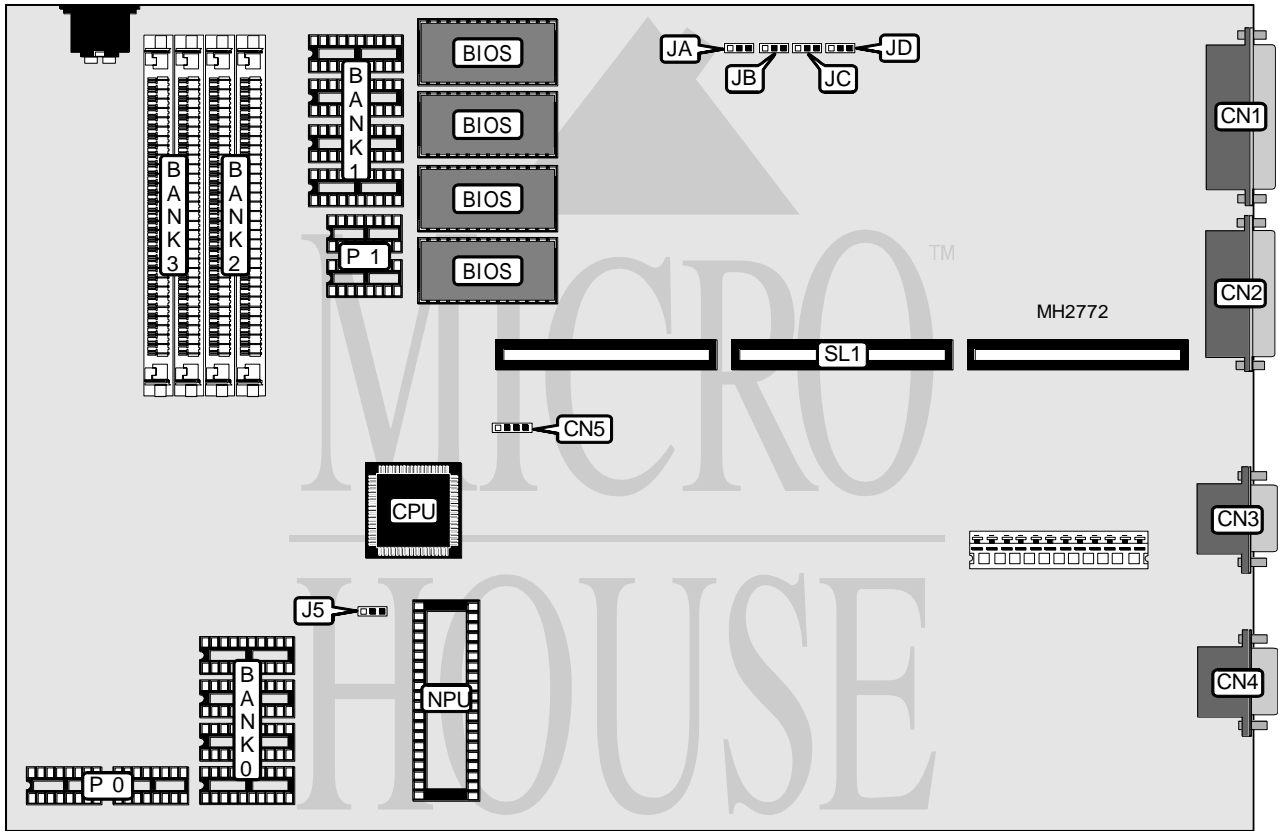


ACER, INC. ACERSTATION II

Processor	80286
Processor Speed	12MHz
Chip Set	Unidentified
Max. Onboard DRAM	5MB
Cache	None
BIOS	Award
Dimensions	330mm x 218mm
I/O Options	Parallel port, serial ports (2), VGA port, riser slot
NPU Options	80287



CONNECTIONS			
Purpose	Location	Purpose	Location
Serial port 1	CN1	VGA port	CN4
Parallel port	CN2	External battery	CN5
Serial port 2	CN3	Riser slot	SL1

Continued on next page. . .

ACER, INC.
ACERSTATION II

... continued from previous page

USER CONFIGURABLE SETTINGS		
Function	Jumper	Position
On board VGA enabled	JA	pins 1 & 2 closed
On board VGA disabled	JA	pins 2 & 3 closed

DRAM CONFIGURATION						
Size	Bank 0	Parity 0	Bank 1	Parity 1	Bank 2	Bank 3
512KB	(4) 44256	(2) 41256	NONE	NONE	NONE	NONE
1MB	(4) 44256	(2) 41256	(4) 44256	(2) 41256	NONE	NONE
2MB	(4) 44256	(2) 41256	(4) 44256	(2) 41256	(2) 256K x 9	(2) 256K x 9
5MB	(4) 44256	(2) 41256	(4) 44256	(2) 41256	(2) 1M x 9	(2) 1M x 9

NPU CONFIGURATION	
Speed	J5
None installed	pins 1 & 2 closed
8MHz	pins 1 & 2 closed
12MHz	pins 2 & 3 closed

I/O CONFIGURATION			
Size	JB	JC	JD
COM 1 disabled	N/A	pins 1 & 2 closed	pins 2 & 3 closed
COM2 disabled	N/A	pins 2 & 3 closed	pins 2 & 3 closed
IDE interface disabled	pins 2 & 3 closed	pins 2 & 3 closed	pins 1 & 2 closed
COM1, COM2 & IDE interface enabled	pins 1 & 2 closed	pins 1 & 2 closed	pins 1 & 2 closed