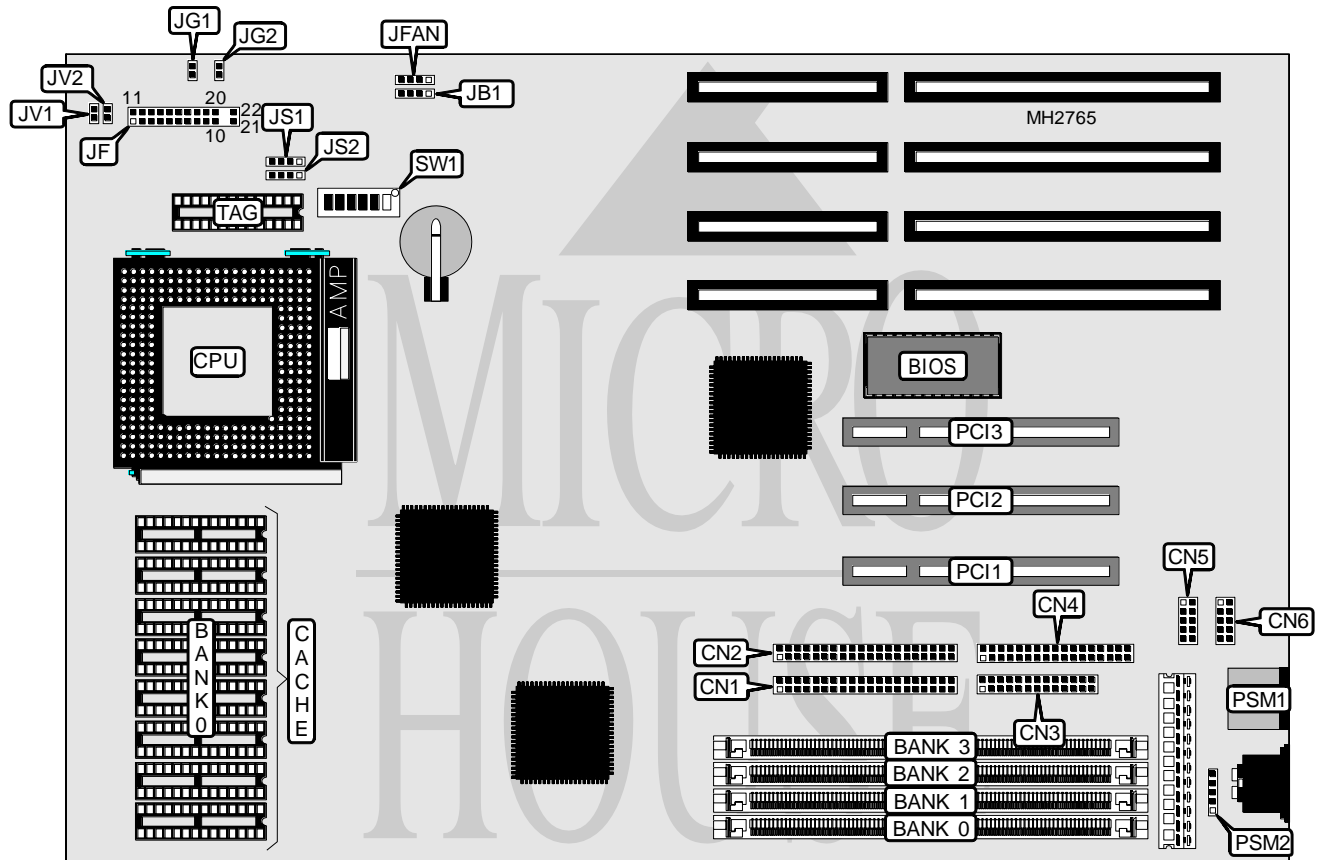


MICRO-STAR INTERNATIONAL CO., LTD.

MS - 5 1 1 8

Processor	Pentium
Processor Speed	75/90/100/120/133MHz
Chip Set	SIS
Max. Onboard DRAM	512MB
Cache	256/512/1024KB
BIOS	AMI
Dimensions	260mm x 220mm
I/O Options	PS/2 mouse port, PS/2 mouse connector, parallel port, serial ports (2), IDE interfaces (2), floppy drive interface, green PC connector, 32-bit PCI slots (3)
NPU Options	None



CONNECTIONS			
Purpose	Location	Purpose	Location
IDE interface (primary)	CN1	Turbo LED	JF pins 12 & 13
IDE interface (secondary)	CN2	Turbo switch	JF pins 15 - 17
Parallel port	CN3	Reset switch	JF pins 19 & 20
Floppy drive interface	CN4	IDE interface LED	JF pins 21 & 22
Serial port 2	CN5	Green PC connector	JG1
Serial port 1	CN6	Green PC LED	JG2
External battery	JB1	32-bit PCI slots	PCI1 - PCI3
Chassis fan power	JFAN	PS/2 mouse port	PSM1
Power LED & keylock	JF pins 1 - 5	PS/2 mouse connector	PSM2
Speaker	JF pins 7 - 10		

Continued on next page. . .

MICRO-STAR INTERNATIONAL CO., LTD.
MS - 5 1 1 8

... continued from previous page

DRAM CONFIGURATION				
Size	Bank 0	Bank 1	Bank 2	Bank 3
4MB	(1) 1M x 36	NONE	NONE	NONE
4MB	NONE	NONE	(1) 1M x 36	NONE
8MB	(1) 2M x 36	NONE	NONE	NONE
8MB	NONE	NONE	(1) 2M x 36	NONE
8MB	(1) 1M x 36	(1) 1M x 36	NONE	NONE
8MB	NONE	NONE	(1) 1M x 36	(1) 1M x 36
16MB	(1) 4M x 36	NONE	NONE	NONE
16MB	NONE	NONE	(1) 4M x 36	NONE
16MB	(1) 2M x 36	(1) 2M x 36	NONE	NONE
16MB	(1) 1M x 36	(1) 1M x 36	(1) 1M x 36	(1) 1M x 36
16MB	NONE	NONE	(1) 2M x 36	(1) 2M x 36
24MB	(1) 1M x 36	(1) 1M x 36	(1) 2M x 36	(1) 2M x 36
24MB	(1) 2M x 36	(1) 2M x 36	(1) 1M x 36	(1) 1M x 36
32MB	(1) 8M x 36	NONE	NONE	NONE
32MB	NONE	NONE	(1) 8M x 36	NONE
32MB	(1) 4M x 36	(1) 4M x 36	NONE	NONE
32MB	(1) 2M x 36	(1) 2M x 36	(1) 2M x 36	(1) 2M x 36
32MB	NONE	NONE	(1) 4M x 36	(1) 4M x 36
40MB	(1) 1M x 36	(1) 1M x 36	(1) 4M x 36	(1) 4M x 36
40MB	(1) 4M x 36	(1) 4M x 36	(1) 1M x 36	(1) 1M x 36
48MB	(1) 4M x 36	(1) 4M x 36	(1) 2M x 36	(1) 2M x 36
48MB	(1) 2M x 36	(1) 2M x 36	(1) 4M x 36	(1) 4M x 36
64MB	(1) 16M x 36	NONE	NONE	NONE
64MB	NONE	NONE	(1) 16M x 36	NONE
64MB	(1) 8M x 36	(1) 8M x 36	NONE	NONE
64MB	(1) 4M x 36	(1) 4M x 36	(1) 4M x 36	(1) 4M x 36
64MB	NONE	NONE	(1) 8M x 36	(1) 8M x 36
72MB	(1) 1M x 36	(1) 1M x 36	(1) 8M x 36	(1) 8M x 36
72MB	(1) 8M x 36	(1) 8M x 36	(1) 1M x 36	(1) 1M x 36
80MB	(1) 2M x 36	(1) 2M x 36	(1) 8M x 36	(1) 8M x 36
80MB	(1) 8M x 36	(1) 8M x 36	(1) 2M x 36	(1) 2M x 36
96MB	(1) 4M x 36	(1) 4M x 36	(1) 8M x 36	(1) 8M x 36
96MB	(1) 8M x 36	(1) 8M x 36	(1) 4M x 36	(1) 4M x 36
128MB	(1) 32M x 36	NONE	NONE	NONE
128MB	NONE	NONE	(1) 32M x 36	NONE
128MB	(1) 16M x 36	(1) 16M x 36	NONE	NONE
128MB	(1) 8M x 36	(1) 8M x 36	(1) 8M x 36	(1) 8M x 36
128MB	NONE	NONE	(1) 16M x 36	(1) 16M x 36
136MB	(1) 1M x 36	(1) 1M x 36	(1) 16M x 36	(1) 16M x 36
136MB	(1) 16M x 36	(1) 16M x 36	(1) 1M x 36	(1) 1M x 36
144MB	(1) 2M x 36	(1) 2M x 36	(1) 16M x 36	(1) 16M x 36
144MB	(1) 16M x 36	(1) 16M x 36	(1) 2M x 36	(1) 2M x 36
160MB	(1) 4M x 36	(1) 4M x 36	(1) 16M x 36	(1) 16M x 36
160MB	(1) 16M x 36	(1) 16M x 36	(1) 4M x 36	(1) 4M x 36

Continued on next page. . .

MICRO-STAR INTERNATIONAL CO., LTD.

MS-5118

... continued from previous page

DRAM CONFIGURATION (CON'T)				
Size	Bank 0	Bank 1	Bank 2	Bank 3
188MB	(1) 4M x 36	(1) 4M x 36	(1) 32M x 36	(1) 32M x 36
192MB	(1) 8M x 36	(1) 8M x 36	(1) 16M x 36	(1) 16M x 36
192MB	(1) 16M x 36	(1) 16M x 36	(1) 8M x 36	(1) 8M x 36
256MB	(1) 32M x 36	(1) 32M x 36	NONE	NONE
256MB	(1) 16M x 36	(1) 16M x 36	(1) 16M x 36	(1) 16M x 36
256MB	NONE	NONE	(1) 32M x 36	(1) 32M x 36
262MB	(1) 1M x 36	(1) 1M x 36	(1) 32M x 36	(1) 32M x 36
264MB	(1) 32M x 36	(1) 32M x 36	(1) 1M x 36	(1) 1M x 36
272MB	(1) 2M x 36	(1) 2M x 36	(1) 32M x 36	(1) 32M x 36
272MB	(1) 32M x 36	(1) 32M x 36	(1) 2M x 36	(1) 2M x 36
288MB	(1) 32M x 36	(1) 32M x 36	(1) 4M x 36	(1) 4M x 36
320MB	(1) 8M x 36	(1) 8M x 36	(1) 32M x 36	(1) 32M x 36
320MB	(1) 32M x 36	(1) 32M x 36	(1) 8M x 36	(1) 8M x 36
384MB	(1) 16M x 36	(1) 16M x 36	(1) 32M x 36	(1) 32M x 36
384MB	(1) 32M x 36	(1) 32M x 36	(1) 16M x 36	(1) 16M x 36
512MB	(1) 32M x 36	(1) 32M x 36	(1) 32M x 36	(1) 32M x 36

CACHE CONFIGURATION		
Size	Bank 0	TAG
256KB	(8) 32K x 8	(1) 8K x 8
512KB	(8) 64K x 8	(1) 16K x 8
1MB	(8) 128K x 8	(1) 32K x 8

CACHE JUMPER CONFIGURATION		
Size	JS1	JS2
256KB	pins 1 & 2 closed	pins 2 & 3 closed
512KB	pins 3 & 4 closed	pins 3 & 4 closed
512KB	pins 2 & 3 closed	pins 2 & 3 closed
1MB	pins 2 & 3 closed	pins 1 & 2 closed

CPU SPEED CONFIGURATION						
Speed	SW1/1	SW1/2	SW1/3	SW1/4	SW1/5	SW1/6
75MHz	Off	Off	Off	Off	Off	On
90MHz	Off	Off	Off	On	Off	On
100MHz	Off	Off	Off	On	On	On
120MHz	Off	On	Off	On	Off	On
133MHz	Off	On	Off	On	On	On

CPU VOLTAGE CONFIGURATION		
Voltage	JV1	JV2
3.38v	Closed	Closed
3.52v	Open	Closed