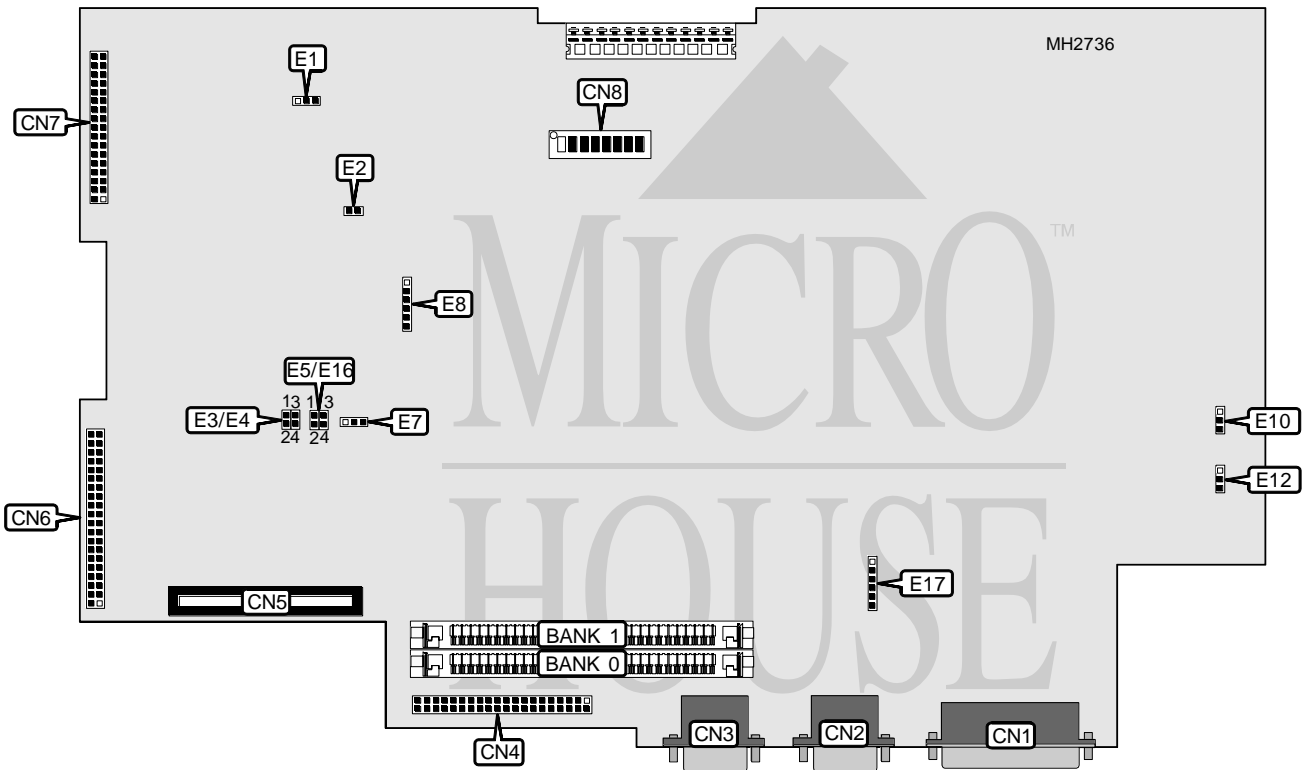


COMPAQ COMPUTER CORPORATION PORTABLE III

Processor	80286 (exact location unidentified)
Processor Speed	8/12MHz
Chip Set	Unidentified
Max. Onboard DRAM	6MB (4MB on external memory card)
Cache	None
BIOS	Unidentified
Dimensions	330mm x 218mm
I/O Options	IDE interface, external memory card slot, floppy drive interface, parallel port, serial port, VGA port, display connector
NPU Options	80287 (exact location unidentified)



CONNECTIONS			
Purpose	Location	Purpose	Location
Parallel port	CN1	External Memory card slot	CN5
VGA port	CN2	IDE interface	CN6
Serial port	CN3	Floppy drive interface	CN7
Display controller	CN4		

Continued on next page. . .

COMPAQ COMPUTER CORPORATION

PORTABLE III

... continued from previous page

USER CONFIGURABLE SETTINGS		
Function	Jumper/Switch	Position
í Hard drive enabled	CN8/5	On
Hard drive disabled	CN8/5	Off
í CPU speed select 8MHz	CN8/6	On
CPU speed select 12MHz	CN8/6	Off
í Video type select boots plasma display in color mode	CN8/7	On
Video type select boots plasma display in monochrome mode	CN8/7	Off
í Factory configured - do not alter	CN8/8	Off
í CPU access speed select 8/12	E1	pins 1 & 2 closed
CPU access speed select 8	E1	pins 2 & 3 closed
í Factory configured - do not alter	E2	N/A
í Printer port enabled	E7	pins 2 & 3 closed
Printer port disabled	E7	pins 1 & 2 closed
í Controller address select primary	E8	pins 1 & 2, 4 & 5 closed
Controller address select secondary	E8	pins 2 & 3, 4 & 5 closed
í System ROM select 16KB	E10	pins 1 & 2 closed
System ROM select 32KB	E10	pins 2 & 3 closed
í ROM Set2 enabled	E12	pins 1 & 2 closed
ROM Set2 disabled	E12	pins 2 & 3 closed

DRAM CONFIGURATION		
Size	Bank 0	Bank 1
256KB	(1) 256K x 9	NONE
512KB	(1) 256K x 9	(1) 256K x 9
1MB	(1) 1M x 9	NONE
1.5MB	(1) 1M x 9	(1) 256K x 9
2MB	(1) 1M x 9	(1) 1M x 9

COM/IRQ CONFIGURATION	
COM/IRQ	E5/E16
COM1/IRQ4 Serial	pins 2 & 4 closed
COM1/IRQ4 Modem	pins 3 & 4 closed
COM2/IRQ3 Serial	pins 1 & 2 closed
COM2/IRQ3 Modem	pins 1 & 3 closed

SERIAL PORT CONFIGURATION	
COM port	E3/E4
COM1 Serial	pins 1 & 2 closed
COM1 Modem	pins 1 & 3 closed
COM2 Serial	pins 1 & 3 closed
COM2 Modem	pins 3 & 4 closed

Continued on next page. . .

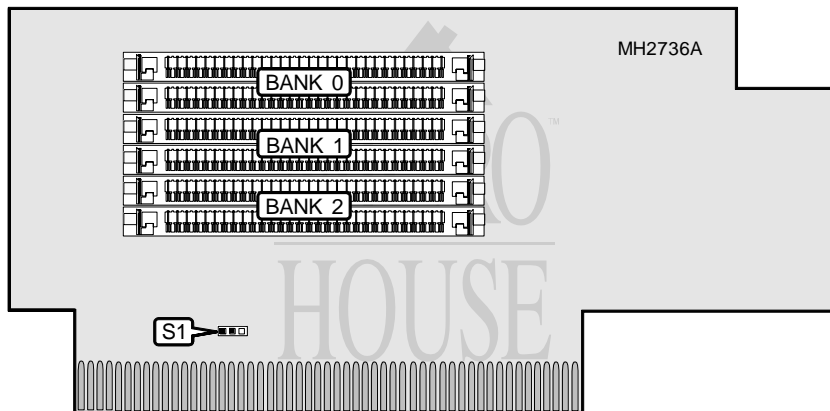
COMPAQ COMPUTER CORPORATION PORTABLE III

... continued from previous page

DRAM BASE MEMORY SWITCH CONFIGURATION		
Size	CN8/1	CN8/2
None	On	On
256KB	On	Off
512KB	Off	On
640KB	Off	Off

DRAM EXTENDED MEMORY SWITCH CONFIGURATION			
Base memory	Extended memory	CN8 Switch 3	CN8 Switch 4
640KB	256KB	On	Off
640KB	1MB	Off	On

DRAM BANK CONFIGURATION	
Bank	E17
None	pins 2 & 3, 4 & 5 closed
Bank 1	pins 2 & 3, 5 & 6 closed
Bank 1 & 2	pins 1 & 2, 4 & 5 closed
Bank 1, 2, & 3	pins 1 & 2, 5 & 6 closed



DRAM CONFIGURATION			
Size	Bank 0	Bank 1	Bank 2
512KB	(2) 256K x 9	NONE	NONE
1MB	(2) 256K x 9	(2) 256K x 9	NONE
1.5MB	(2) 256K x 9	(2) 256K x 9	(2) 256K x 9
2MB	(2) 1M x 9	NONE	NONE
4MB	(2) 1M x 9	(2) 1M x 9	NONE
6MB	(2) 1M x 9	(2) 1M x 9	(2) 1M x 9

DRAM CONFIGURATION	
Size	S1
256K x 9	pins 1 & 2 closed
1M x 9	pins 2 & 3 closed