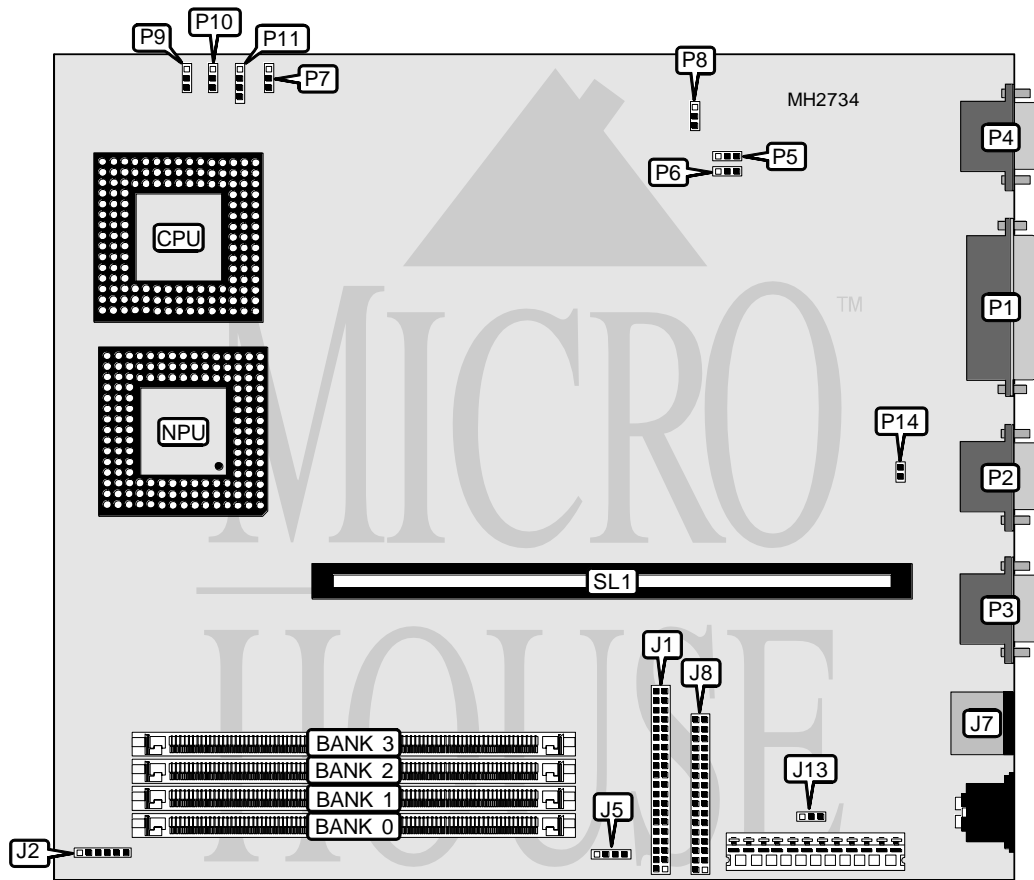


COMPAQ COMPUTER CORPORATION PRESARIO 600 SERIES (486 WITH 4MB)

Processor	80486SX/80487SX/ODP486SX/80486DX/80486DX2
Processor Speed	25/33/50(internal)/66(internal)MHz
Chip Set	Unidentified
Max. Onboard DRAM	56MB
Cache	None
BIOS	Unidentified
Dimensions	258mm x 218mm
I/O Options	Riser card slot, floppy drive interface, IDE interface, VGA port, serial ports (2), parallel port, PS/2 mouse port
NPU Options	80487



CONNECTIONS			
Purpose	Location	Purpose	Location
IDE interface	J1	Serial port 1	P2
External	J5	Serial port 2	P3
PS/2 mouse port	J7	VGA port	P4
Floppy drive interface	J8	Riser card slot	SL1
Parallel port	P1		

Continued on next page. . .

COMPAQ COMPUTER CORPORATION PRESARIO 600 SERIES (486 WITH 4MB)

... continued from previous page

USER CONFIGURABLE SETTINGS		
Function	Jumper	Position
í Factory configured - do not alter	J2	N/A
í I/O address type select 398h/399h	J13	pins 1 & 2 closed
I/O address type select 26Eh/26Fh	J13	pins 1 & 2 closed
í PGA CPU enabled	P7	Open
PGA CPU disabled	P7	pins 2 & 3 closed
PQFP CPU enabled	P7	Open
í CMOS memory normal operation	P14	pins 1 & 2 closed
CMOS mememory clear	P14	Open

DRAM CONFIGURATION					
Size	Bank 0A	Bank 0	Bank 1	Bank 2	Bank 3
4MB	4MB	NONE	NONE	NONE	NONE
5MB	4MB	(1) 256K x 36	NONE	NONE	NONE
6MB	4MB	(1) 256K x 36	(1) 256K x 36	NONE	NONE
6MB	4MB	(1) 512K x 36	NONE	NONE	NONE
7MB	4MB	(1) 256K x 36	(1) 256K x 36	(1) 256K x 36	NONE
8MB	4MB	(1) 256K x 36	(1) 256K x 36	(1) 256K x 36	(1) 256K x 36
8MB	4MB	(1) 512K x 36	(1) 512K x 36	NONE	NONE
8MB	4MB	(1) 1M x 36	NONE	NONE	NONE
10MB	4MB	(1) 512K x 36	(1) 512K x 36	(1) 512K x 36	NONE
10MB	4MB	(1) 512K x 36	(1) 512K x 36	(1) 256K x 36	(1) 256K x 36
10MB	4MB	(1) 256K x 36	(1) 256K x 36	(1) 512K x 36	(1) 512K x 36
12MB	4MB	(1) 512K x 36	(1) 512K x 36	(1) 512K x 36	(1) 512K x 36
12MB	4MB	(1) 1M x 36	(1) 1M x 36	NONE	NONE
12MB	4MB	(1) 2M x 36	NONE	NONE	NONE
14MB	4MB	(1) 1M x 36	(1) 1M x 36	(1) 256K x 36	(1) 256K x 36
14MB	4MB	(1) 256K x 36	(1) 256K x 36	(1) 1M x 36	(1) 1M x 36
16MB	4MB	(1) 1M x 36	(1) 1M x 36	(1) 1M x 36	NONE
16MB	4MB	(1) 1M x 36	(1) 1M x 36	(1) 512K x 36	(1) 512K x 36
16MB	4MB	(1) 512K x 36	(1) 512K x 36	(1) 1M x 36	(1) 1M x 36
20MB	4MB	(1) 1M x 36	(1) 1M x 36	(1) 1M x 36	(1) 1M x 36
20MB	4MB	(1) 2M x 36	(1) 2M x 36	NONE	NONE
20MB	4MB	(1) 4M x 36	NONE	NONE	NONE
22MB	4MB	(1) 2M x 36	(1) 2M x 36	(1) 256K x 36	(1) 256K x 36
22MB	4MB	(1) 256K x 36	(1) 256K x 36	(1) 2M x 36	(1) 2M x 36
24MB	4MB	(1) 2M x 36	(1) 2M x 36	(1) 512K x 36	(1) 512K x 36
24MB	4MB	(1) 512K x 36	(1) 512K x 36	(1) 2M x 36	(1) 2M x 36
28MB	4MB	(1) 2M x 36	(1) 2M x 36	(1) 2M x 36	NONE
28MB	4MB	(1) 2M x 36	(1) 2M x 36	(1) 1M x 36	(1) 1M x 36
28MB	4MB	(1) 1M x 36	(1) 1M x 36	(1) 2M x 36	(1) 2M x 36
36MB	4MB	(1) 2M x 36	(1) 2M x 36	(1) 2M x 36	(1) 2M x 36
36MB	4MB	(1) 4M x 36	(1) 4M x 36	NONE	NONE
36MB	4MB	(1) 8M x 36	NONE	NONE	NONE
38MB	4MB	(1) 4M x 36	(1) 4M x 36	(1) 256K x 36	(1) 256K x 36

Note: Bank 0A is factory installed and not configurable.

Continued on next page. . .

COMPAQ COMPUTER CORPORATION

PRESARIO 600 SERIES (486 WITH 4MB)

... continued from previous page

DRAM CONFIGURATION (CON'T)					
Size	Bank 0A	Bank 0	Bank 1	Bank 2	Bank 3
38MB	4MB	(1) 256K x 36	(1) 256K x 36	(1) 4M x 36	(1) 4M x 36
40MB	4MB	(1) 4M x 36	(1) 4M x 36	(1) 512K x 36	(1) 512K x 36
40MB	4MB	(1) 512K x 36	(1) 512K x 36	(1) 4M x 36	(1) 4M x 36
44MB	4MB	(1) 4M x 36	(1) 4M x 36	(1) 1M x 36	(1) 1M x 36
44MB	4MB	(1) 1M x 36	(1) 1M x 36	(1) 4M x 36	(1) 4M x 36
52MB	4MB	(1) 4M x 36	(1) 4M x 36	(1) 4M x 36	NONE
52MB	4MB	(1) 4M x 36	(1) 4M x 36	(1) 2M x 36	(1) 2M x 36
52MB	4MB	(1) 2M x 36	(1) 2M x 36	(1) 4M x 36	(1) 4M x 36
56MB	4MB	(1) 4M x 36	(1) 4M x 36	(1) 4M x 36	(1) 1M x 36

Note: Bank 0A is factory installed and not configurable.

CPU TYPE CONFIGURATION			
Type	P9	P10	P11
80486SX (PGA)	pins 1 & 2 closed	pins 1 & 2 closed	pins 3 & 4 closed
80486SX (PQFP)	pins 2 & 3 closed	pins 1 & 2 closed	pins 3 & 4 closed
80487SX	pins 1 & 2 closed	pins 2 & 3 closed	pins 2 & 3 closed
80486DX	pins 1 & 2 closed	pins 2 & 3 closed	pins 1 & 2 closed
80486DX2	pins 1 & 2 closed	pins 2 & 3 closed	pins 1 & 2 closed

CPU SPEED CONFIGURATION	
CPU speed	P8
25MHz	pins 2 & 3 closed
33MHz	pins 1 & 2 closed
50MHz	pins 2 & 3 closed
66MHz	pins 1 & 2 closed

ON-BOARD VIDEO CONFIGURATION		
Setting	P5	P6
Disabled	Open	Open
Enabled	pins 1 & 2 closed	pins 1 & 2 closed