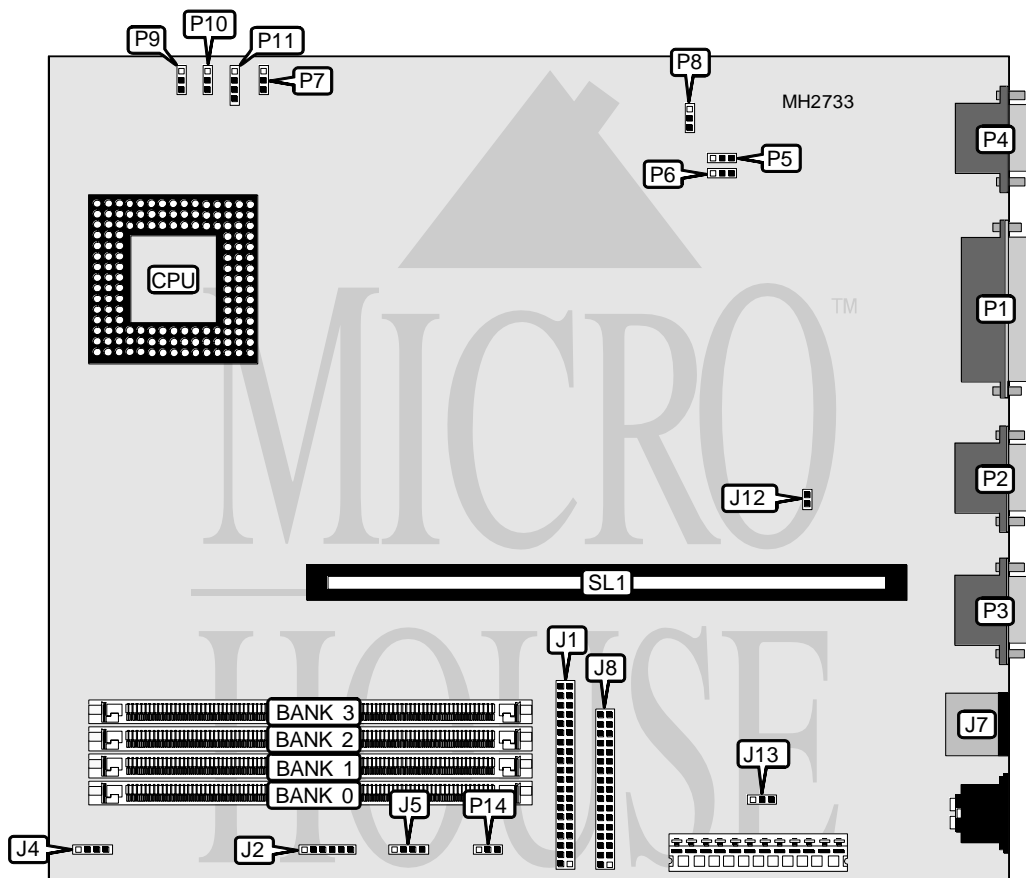


COMPAQ COMPUTER CORPORATION PRESARIO 600 SERIES (LOCAL BUS-486-BASED MODELS)

Processor	80486SX/80487SX/ODP486DX/80486DX/ODP486DX2/80486DX2
Processor Speed	25/33/50(internal)/66(internal)MHz
Chip Set	Unidentified
Max. Onboard DRAM	56MB
Cache	None
BIOS	Unidentified
Dimensions	258mm x 218mm
I/O Options	Riser card slot, floppy drive interface, IDE interface, VGA port, serial ports (2), parallel port, PS/2 mouse port
NPU Options	None



CONNECTIONS			
Purpose	Location	Purpose	Location
IDE interface	J1	Serial port 1	P2
External Battery	J5	Serial port 2	P3
PS/2 mouse port	J7	VGA port	P4
Floppy drive interface	J8	Riser card slot	SL1
Parallel port	P1		

Continued on next page . . .

COMPAQ COMPUTER CORPORATION PRESARIO 600 SERIES (LOCAL BUS-486-BASED MODELS)

... continued from previous page

USER CONFIGURABLE SETTINGS		
Function	Jumper	Position
í Factory configured - do not alter	J2	N/A
í Speaker type select internal	J4	pins 3 & 4 closed
Speaker type select external	J4	Open
í Monitor type select color	J12	Open
Monitor type select monochrome	J12	pins 1 & 2 closed
í I/O address type select 398h/399h	J13	Open
I/O address type select 26Eh/26Fh	J13	pins 1 & 2 closed
í Battery type select external	P14	pins 1 & 2 closed
Battery type select internal	P14	pins 2 & 3 closed
CMOS memory clear	P14	Open

DRAM CONFIGURATION				
Size	Bank 0	Bank 1	Bank 2	Bank 3
4MB	(1) 256K x 36	(1) 256K x 36	(1) 256K x 36	(1) 256K x 36
4MB	(1) 512K x 36	(1) 512K x 36	NONE	NONE
4MB	(1) 1M x 36	NONE	NONE	NONE
6MB	(1) 512K x 36	(1) 512K x 36	(1) 512K x 36	NONE
6MB	(1) 512K x 36	(1) 512K x 36	(1) 256K x 36	(1) 256K x 36
6MB	(1) 256K x 36	(1) 256K x 36	(1) 512K x 36	(1) 512K x 36
8MB	(1) 512K x 36	(1) 512K x 36	(1) 512K x 36	(1) 512K x 36
8MB	(1) 1M x 36	(1) 1M x 36	NONE	NONE
8MB	(1) 2M x 36	NONE	NONE	NONE
10MB	(1) 1M x 36	(1) 1M x 36	(1) 256K x 36	(1) 256K x 36
10MB	(1) 256K x 36	(1) 256K x 36	(1) 1M x 36	(1) 1M x 36
12MB	(1) 1M x 36	(1) 1M x 36	(1) 1M x 36	NONE
12MB	(1) 1M x 36	(1) 1M x 36	(1) 512K x 36	(1) 512K x 36
12MB	(1) 512K x 36	(1) 512K x 36	(1) 1M x 36	(1) 1M x 36
16MB	(1) 1M x 36	(1) 1M x 36	(1) 1M x 36	(1) 1M x 36
16MB	(1) 2M x 36	(1) 2M x 36	NONE	NONE
16MB	(1) 4M x 36	NONE	NONE	NONE
18MB	(1) 2M x 36	(1) 2M x 36	(1) 256K x 36	(1) 256K x 36
18MB	(1) 256K x 36	(1) 256K x 36	(1) 2M x 36	(1) 2M x 36
20MB	(1) 2M x 36	(1) 2M x 36	(1) 512K x 36	(1) 512K x 36
20MB	(1) 512K x 36	(1) 512K x 36	(1) 2M x 36	(1) 2M x 36
24MB	(1) 2M x 36	(1) 2M x 36	(1) 2M x 36	NONE
24MB	(1) 2M x 36	(1) 2M x 36	(1) 1M x 36	(1) 1M x 36
24MB	(1) 1M x 36	(1) 1M x 36	(1) 2M x 36	(1) 2M x 36
32MB	(1) 2M x 36	(1) 2M x 36	(1) 2M x 36	(1) 2M x 36
32MB	(1) 4M x 36	(1) 4M x 36	NONE	NONE
32MB	(1) 8M x 36	NONE	NONE	NONE
34MB	(1) 4M x 36	(1) 4M x 36	(1) 256K x 36	(1) 256K x 36
34MB	(1) 256K x 36	(1) 256K x 36	(1) 4M x 36	(1) 4M x 36
36MB	(1) 4M x 36	(1) 4M x 36	(1) 512K x 36	(1) 512K x 36

Continued on next page...

COMPAQ COMPUTER CORPORATION
 PRESARIO 600 SERIES
 (LOCAL BUS-486-BASED MODELS)

... continued from previous page

DRAM CONFIGURATION (CON'T)				
Size	Bank 0	Bank 1	Bank 2	Bank 3
36MB	(1) 512K x 36	(1) 512K x 36	(1) 4M x 36	(1) 4M x 36
40MB	(1) 4M x 36	(1) 4M x 36	(1) 1M x 36	(1) 1M x 36
40MB	(1) 1M x 36	(1) 1M x 36	(1) 4M x 36	(1) 4M x 36
48MB	(1) 4M x 36	(1) 4M x 36	(1) 4M x 36	NONE
48MB	(1) 4M x 36	(1) 4M x 36	(1) 2M x 36	(1) 2M x 36
48MB	(1) 2M x 36	(1) 2M x 36	(1) 4M x 36	(1) 4M x 36
56MB	(1) 8M x 36	(1) 4M x 36	(1) 2M x 36	NONE

CPU SPEED CONFIGURATION	
Speed	P8
25MHz	pins 2 & 3 closed
33MHz	pins 1 & 2 closed
50iMHz	pins 2 & 3 closed
66iMHz	pins 1 & 2 closed

CPU TYPE CONFIGURATION				
Type	P7	P9	P10	P11
80486SX	pins 2 & 3 closed	pins 1 & 2 closed	pins 2 & 3 closed	pins 1 & 2 closed
80487SX	pins 2 & 3 closed	pins 1 & 2 closed	pins 2 & 3 closed	pins 2 & 3 closed
ODP486DX	pins 2 & 3 closed	pins 1 & 2 closed	pins 2 & 3 closed	pins 2 & 3 closed
80486DX	pins 2 & 3 closed	pins 1 & 2 closed	pins 2 & 3 closed	pins 1 & 2 closed
ODP486DX2	pins 2 & 3 closed	pins 1 & 2 closed	pins 2 & 3 closed	pins 2 & 3 closed
80486DX2	pins 2 & 3 closed	pins 1 & 2 closed	pins 2 & 3 closed	pins 1 & 2 closed

ON-BOARD VIDEO CONFIGURATION		
On-board Video	P5	P6
Disabled	pins 1 & 2 closed	pins 2 & 3 closed
Enabled	pins 1 & 2 closed	pins 2 & 3 closed