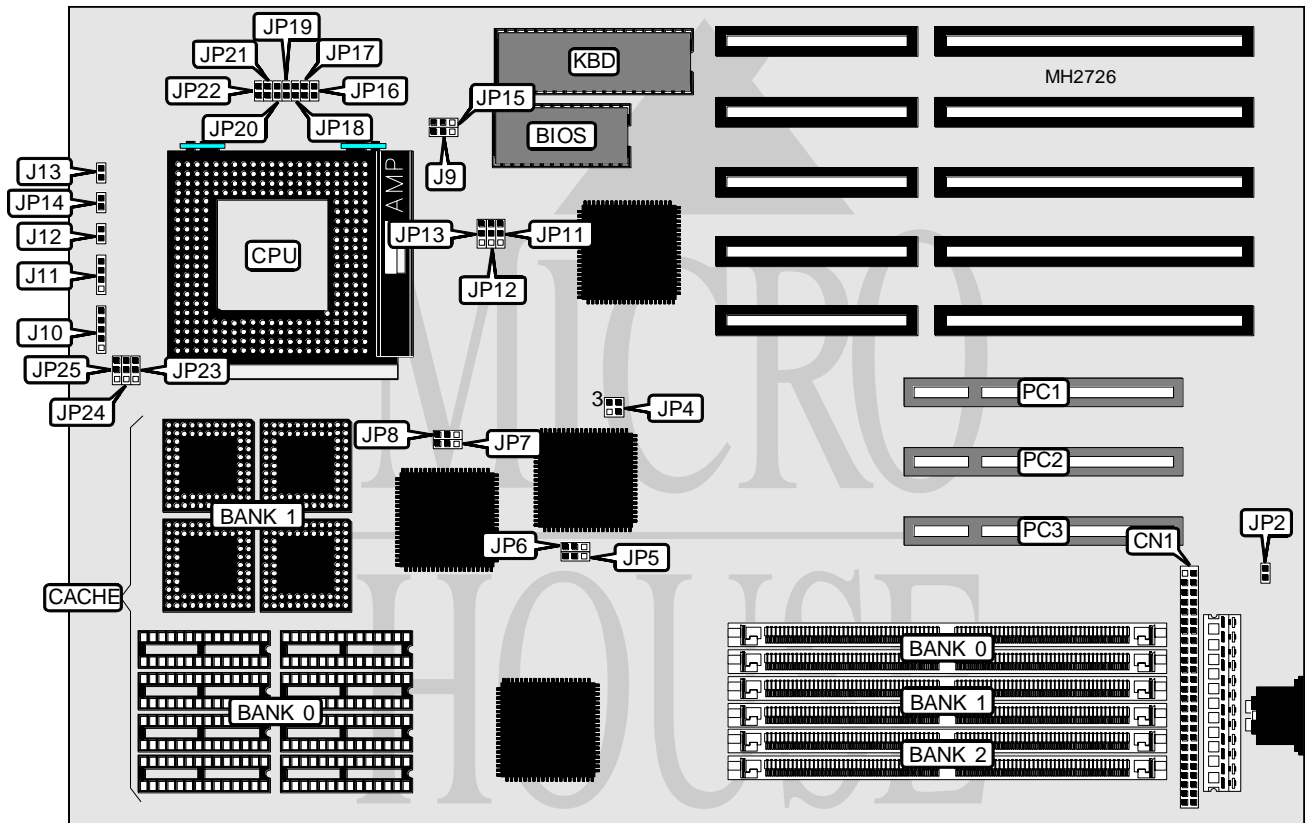


# MODULAR CIRCUIT TECHNOLOGY

## J D R - P 5 8 6 - 6 0

<b>Processor</b>	Pentium
<b>Processor Speed</b>	50/60/66MHz
<b>Chip Set</b>	Intel
<b>Max. Onboard DRAM</b>	192MB
<b>Cache</b>	256/512KB
<b>BIOS</b>	Award
<b>Dimensions</b>	330mm x 218mm
<b>I/O Options</b>	SCSI connector, 32-bit PCI slots (3)
<b>NPU Options</b>	None



CONNECTIONS			
Purpose	Location	Purpose	Location
SCSI connector	CN1	Turbo LED	J13
Power LED & keylock	J10	SCSI LED	JP14
Speaker	J11	32-bit PCI bus slots	SL1 - SL3
Reset switch	J12		

Continued next page . . .

## MODULAR CIRCUIT TECHNOLOGY

## JDR - P586 - 60

... continued from previous page

USER CONFIGURABLE SETTINGS		
Function	Jumper	Position
í Monitor type select color	J9	pins 2 & 3 closed
Monitor type select monochrome	J9	pins 1 & 2 closed
í Factory configured - do not alter	JP1	Open
í TERMPWR select internal	JP2	Closed
TERMPWR select external	JP2	Open
í Factory configured - do not alter	JP3	Open
í Cache parity not supported	JP4	pins 1 & 2, 3 & 4 closed
Cache parity supported	JP4	pins 1 & 3, 2 & 4 closed
í BIOS type select EPROM	JP15	pins 2 & 3 closed
BIOS type select flash	JP15	pins 1 & 2 closed
í Factory configured - do not alter	JP16	Open
í PCMC monitor CPU parity check disabled	JP20	Open
PCMC monitor CPU parity check enabled	JP20	Closed
í CPU NA signal not supported	JP21	Open
CPU NA signal supported	JP21	Closed
í CPU cache mode select write back	JP22	Open
CPU cache mode select write through	JP22	Closed

Note: The location of JP1 & JP3 are unknown.

DRAM CONFIGURATION			
Size	Bank 0	Bank 1	Bank 2
2MB	(2) 256K x 36	NONE	NONE
4MB	(2) 256K x 36	(2) 256K x 36	NONE
6MB	(2) 256K x 36	(2) 256K x 36	(2) 256K x 36
8MB	(2) 1M x 36	NONE	NONE
10MB	(2) 1M x 36	(2) 256K x 36	NONE
12MB	(2) 1M x 36	(2) 256K x 36	(2) 256K x 36
14MB	(2) 1M x 36	(2) 512K x 36	(2) 256K x 36
16MB	(2) 1M x 36	(2) 1M x 36	NONE
18MB	(2) 1M x 36	(2) 1M x 36	(2) 256K x 36
20MB	(2) 1M x 36	(2) 1M x 36	(2) 512K x 36
22MB	(2) 2M x 36	(2) 512K x 36	(2) 256K x 36
24MB	(2) 2M x 36	(2) 1M x 36	NONE
26MB	(2) 2M x 36	(2) 1M x 36	(2) 256K x 36
28MB	(2) 2M x 36	(2) 1M x 36	(2) 512K x 36
32MB	(2) 4M x 36	NONE	NONE
34MB	(2) 4M x 36	(2) 256K x 36	NONE
36MB	(2) 4M x 36	(2) 256K x 36	(2) 256K x 36
38MB	(2) 4M x 36	(2) 512K x 36	(2) 256K x 36
40MB	(2) 4M x 36	(2) 1M x 36	NONE
42MB	(2) 4M x 36	(2) 1M x 36	(2) 256K x 36
44MB	(2) 4M x 36	(2) 1M x 36	(2) 512K x 36
48MB	(2) 4M x 36	(2) 2M x 36	NONE
50MB	(2) 4M x 36	(2) 2M x 36	(2) 256K x 36

Continued next page. . .

## MODULAR CIRCUIT TECHNOLOGY

## JDR - P586 - 60

... continued from previous page

DRAM CONFIGURATION (CON'T)			
Size	Bank 0	Bank 1	Bank 2
52MB	(2) 4M x 36	(2) 2M x 36	(2) 512K x 36
56MB	(2) 4M x 36	(2) 2M x 36	(2) 1M x 36
64MB	(2) 8M x 36	NONE	NONE
66MB	(2) 8M x 36	(2) 256K x 36	NONE
68MB	(2) 8M x 36	(2) 256K x 36	(2) 256K x 36
70MB	(2) 8M x 36	(2) 512K x 36	(2) 256K x 36
72MB	(2) 8M x 36	(2) 1M x 36	NONE
74MB	(2) 8M x 36	(2) 1M x 36	(2) 256K x 36
76MB	(2) 8M x 36	(2) 1M x 36	(2) 512K x 36
80MB	(2) 8M x 36	(2) 2M x 36	NONE
82MB	(2) 8M x 36	(2) 2M x 36	(2) 256K x 36
84MB	(2) 8M x 36	(2) 2M x 36	(2) 512K x 36
88MB	(2) 8M x 36	(2) 2M x 36	(2) 1M x 36
96MB	(2) 8M x 36	(2) 2M x 36	(2) 2M x 36
98MB	(2) 8M x 36	(2) 4M x 36	(2) 256K x 36
100MB	(2) 8M x 36	(2) 4M x 36	(2) 512K x 36
104MB	(2) 8M x 36	(2) 4M x 36	(2) 1M x 36
112MB	(2) 8M x 36	(2) 4M x 36	(2) 2M x 36
128MB	(2) 8M x 36	(2) 4M x 36	(2) 4M x 36
130MB	(2) 8M x 36	(2) 8M x 36	(2) 256K x 36
132MB	(2) 8M x 36	(2) 8M x 36	(2) 512K x 36
136MB	(2) 8M x 36	(2) 8M x 36	(2) 1M x 36
144MB	(2) 8M x 36	(2) 8M x 36	(2) 2M x 36
160MB	(2) 8M x 36	(2) 8M x 36	(2) 4M x 36
192MB	(2) 8M x 36	(2) 8M x 36	(2) 8M x 36

CACHE CONFIGURATION		
Size	Bank 0	Bank 1
256KB	(8) 8K x 8	NONE
256KB	NONE	(4) 32K x 18
512KB	NONE	(4) 64K x 18

Note: Banks 0 & 1 cannot be filled simultaneously. Use only one bank.

CACHE JUMPER CONFIGURATION			
Size	JP23	JP24	JP25
Not installed	pins 1 & 2 closed	pins 1 & 2 closed	Open
256KB (non burst)	pins 2 & 3 closed	pins 1 & 2 closed	pins 1 & 2 closed
256KB (burst)	pins 2 & 3 closed	pins 1 & 2 closed	pins 2 & 3 closed
512KB (non burst)	pins 2 & 3 closed	pins 2 & 3 closed	pins 1 & 2 closed
512KB (burst)	pins 2 & 3 closed	pins 2 & 3 closed	pins 2 & 3 closed

Continued next page. . .

# MODULAR CIRCUIT TECHNOLOGY

## JDR - P586 - 60

... continued from previous page

CACHE JUMPER CONFIGURATION (BANK 1 ONLY)				
Type	JP5	JP6	JP7	JP8
Burst	pins 2 & 3 closed	pins 2 & 3 closed	pins 2 & 3 closed	pins 2 & 3 closed
Non burst	pins 1 & 2 closed	pins 1 & 2 closed	pins 1 & 2 closed	pins 1 & 2 closed

CPU SPEED CONFIGURATION			
Speed	JP17	JP18	JP19
50MHz	Closed	Open	Open
60MHz	Open	Closed	Open
66MHz	Closed	Open	Closed

PCI INTERRUPT CONFIGURATION (INT A & B)			
IRQ	JP11	JP12	JP13
IRQ11	Open	pins 1 & 2 closed	Open
IRQ10	pins 1 & 2 closed	Open	Open
IRQ9	Open	Open	pins 1 & 2 closed

PCI INTERRUPT CONFIGURATION (INT C)			
IRQ	JP11	JP12	JP13
IRQ10	pins 2 & 3 closed	Open	Open
IRQ9	Open	Open	pins 2 & 3 closed
IRQ11	Open	pins 2 & 3 closed	Open