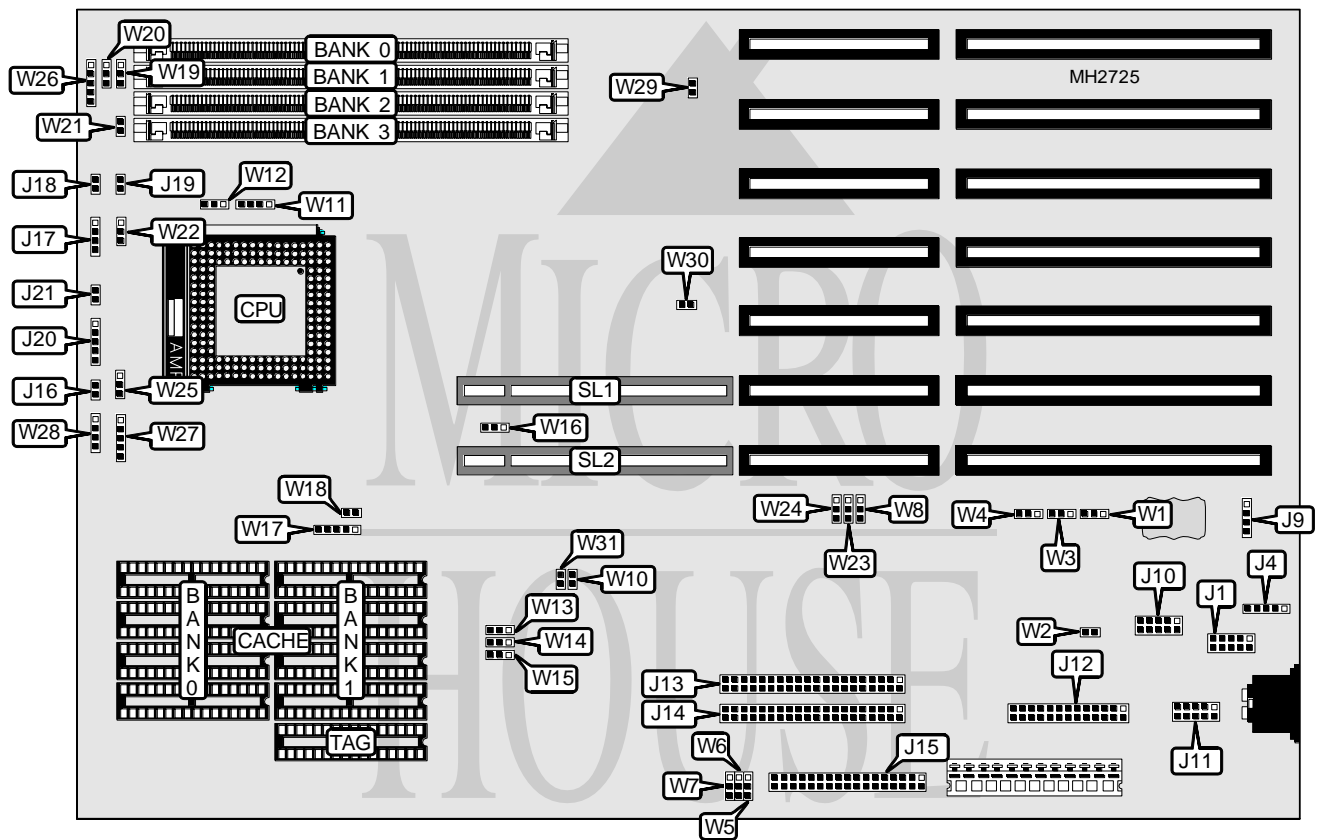


# MICRONICS COMPUTERS, INC.

## J X 3 0 W B

<b>Processor</b>	SL80486SX/80486SX/80487SX/CX486M7/AM486DXL/SL80486DX/80486DX/ SL80486DX2/80486DX2/80486DX4/P24CT/P24D/Pentium Overdrive
<b>Processor Speed</b>	25/33/50(internal)/66(internal)/75(internal)/100(internal)MHz
<b>Chip Set</b>	Micronics
<b>Max. Onboard DRAM</b>	128MB
<b>Cache</b>	128/256/512/1024KB
<b>BIOS</b>	Phoenix
<b>Dimensions</b>	330mm x 218mm
<b>I/O Options</b>	32-bit VESA local bus slots (2), floppy drive interface, green PC connector, IDE interfaces (2), parallel port, PS/2 mouse interface, serial ports (2)
<b>NPU Options</b>	None



CONNECTIONS			
Purpose	Location	Purpose	Location
PS/2 mouse interface	J1	IDE interface LED	J16
Auxiliary keyboard connector	J4	Speaker	J17
External battery	J9	Turbo switch	J18
Serial port 1	J10	Turbo LED	J19
Serial port 2	J11	Power LED & keylock	J20
Parallel port	J12	Reset switch	J21
IDE interface (primary)	J13	32-bit VESA local bus slots	SL1 & SL2
IDE interface (secondary)	J14	Green PC connector	W6
Floppy drive interface	J15		



# MICRONICS COMPUTERS, INC.

## JX30WB

... continued from previous page

USER CONFIGURABLE SETTINGS		
Function	Jumper	Position
í Flash BIOS normal operation	W1	pins 2 & 3 closed
Flash BIOS recovery	W1	pins 1 & 2 closed
í Monitor type select color	W2	Closed
Monitor type select monochrome	W2	Open
í CMOS memory normal operation	W5	pins 1 & 2 closed
CMOS memory clear	W5	pins 2 & 3 closed
í Primary IDE interface enabled	W7	pins 1 & 2 closed
Primary IDE interface disabled	W7	pins 2 & 3 closed
í Parallel port IRQ select IRQ7	W8	pins 1 & 2 closed
Parallel port IRQ select IRQ5	W8	pins 2 & 3 closed
í Factory configured - do not alter	W16	pins 2 & 3 closed
í Factory configured - do not alter	W29	Open
í Flash BIOS write protect enabled	W31	Closed
Flash BIOS write protect disabled	W31	Open

DRAM CONFIGURATION				
Size	Bank 0	Bank 1	Bank 2	Bank 3
4MB	(1) 1M x 36	NONE	NONE	NONE
8MB	(1) 1M x 36	(1) 1M x 36	NONE	NONE
16MB	(1) 1M x 36	(1) 1M x 36	(1) 1M x 36	(1) 1M x 36
16MB	(1) 2M x 36	(1) 2M x 36	NONE	NONE
24MB	(1) 2M x 36	(1) 2M x 36	(1) 1M x 36	(1) 1M x 36
32MB	(1) 2M x 36	(1) 2M x 36	(1) 2M x 36	(1) 2M x 36
32MB	(1) 4M x 36	(1) 4M x 36	NONE	NONE
40MB	(1) 4M x 36	(1) 4M x 36	(1) 1M x 36	(1) 1M x 36
48MB	(1) 4M x 36	(1) 4M x 36	(1) 2M x 36	(1) 2M x 36
64MB	(1) 4M x 36	(1) 4M x 36	(1) 4M x 36	(1) 4M x 36
64MB	(1) 8M x 36	(1) 8M x 36	NONE	NONE
72MB	(1) 8M x 36	(1) 8M x 36	(1) 1M x 36	(1) 1M x 36
80MB	(1) 8M x 36	(1) 8M x 36	(1) 2M x 36	(1) 2M x 36
96MB	(1) 8M x 36	(1) 8M x 36	(1) 4M x 36	(1) 4M x 36
128MB	(1) 8M x 36	(1) 8M x 36	(1) 8M x 36	(1) 8M x 36

CACHE CONFIGURATION			
Size	Bank 0	Bank 1	TAG
128KB	(4) 32K x 8	NONE	(1) 32K x 8
256KB	(4) 32K x 8	(4) 32K x 8	(1) 32K x 8
512KB	(4) 128K x 8	NONE	(1) 128K x 8
1MB	(4) 128K x 8	(4) 128K x 8	(1) 128K x 8

Continued on next page...

# MICRONICS COMPUTERS, INC.

## JX30WB

... continued from previous page

CACHE JUMPER CONFIGURATION					
Size	W13	W14	W15	W17	W30
128KB	1 & 2	1 & 2	1 & 2	1 & 2, 3 & 4	Open
256KB	2 & 3	2 & 3	1 & 2	2 & 3, 4 & 5	Open
512KB	2 & 3	1 & 2	1 & 2	1 & 2, 3 & 4	1 & 2
1MB	2 & 3	2 & 3	2 & 3	2 & 3, 4 & 5	1 & 2

Note: Pins designated should be in the closed position.

CPU TYPE CONFIGURATION				
Type	W11	W12	W18	W19
SL80486SX	2 & 3	Open	Open	2 & 3
80486SX	2 & 3	Open	Open	2 & 3
80487SX	2 & 3	1 & 2	Open	2 & 3
CX486M7 (3.3v)	1 & 2, 3 & 4	2 & 3	Open	2 & 3
CX486M7 (5v)	1 & 2, 3 & 4	2 & 3	Open	2 & 3
AM486DXL	1 & 2, 3 & 4	2 & 3	Open	2 & 3
SL80486DX	1 & 2, 3 & 4	2 & 3	Open	2 & 3
80486DX	1 & 2, 3 & 4	2 & 3	Open	2 & 3
SL80486DX2	1 & 2, 3 & 4	2 & 3	Open	2 & 3
80486DX2	1 & 2, 3 & 4	2 & 3	Open	2 & 3
80486DX4 (2x)	1 & 2, 3 & 4	2 & 3	2 & 3	2 & 3
80486DX4 (2.5x)	1 & 2, 3 & 4	2 & 3	1 & 2	2 & 3
80486DX4 (3x)	1 & 2, 3 & 4	2 & 3	Open	2 & 3
P24CT	1 & 2, 3 & 4	1 & 2	Open	1 & 2
P24D	1 & 2, 3 & 4	2 & 3	Open	1 & 2
P24T	1 & 2, 3 & 4	1 & 2	Open	1 & 2

Note: Pins designated should be in the closed position.

CPU TYPE CONFIGURATION (CON'T)					
Type	W20	W21	W22	W23	W24
SL80486SX	2 & 3	Open	1 & 2	1 & 2	2 & 3
80486SX	2 & 3	Open	Open	1 & 2	2 & 3
80487SX	2 & 3	Open	Open	1 & 2	2 & 3
CX486M7 (3.3v)	1 & 2	Open	Open	2 & 3	1 & 2
CX486M7 (5v)	1 & 2	Open	Open	2 & 3	1 & 2
AM486DXL	2 & 3	Open	Open	2 & 3	1 & 2
SL80486DX	2 & 3	Open	1 & 2	1 & 2	2 & 3
80486DX	2 & 3	Open	Open	1 & 2	2 & 3
SL80486DX2	2 & 3	Open	1 & 2	1 & 2	2 & 3
80486DX2	2 & 3	Open	Open	1 & 2	2 & 3
80486DX4 (2x)	2 & 3	Open	Open	1 & 2	2 & 3
80486DX4 (2.5x)	2 & 3	Open	Open	1 & 2	2 & 3
80486DX4 (3x)	2 & 3	Open	Open	1 & 2	2 & 3
P24CT	2 & 3	Open	Open	1 & 2	1 & 2
P24D	2 & 3	1 & 2	2 & 3	1 & 2	1 & 2
P24T	2 & 3	Open	Open	1 & 2	1 & 2

Note: Pins designated should be in the closed position.

*Continued on next page. . .*

# MICRONICS COMPUTERS, INC.

## JX30WB

... continued from previous page

CPU TYPE CONFIGURATION (CON'T)				
Type	W25	W26	W27	W28
SL80486SX	2 & 3	4 & 5	1 & 2, 3 & 4	3 & 4
80486SX	2 & 3	4 & 5	1 & 2, 3 & 4	3 & 4
80487SX	2 & 3	4 & 5	1 & 2, 3 & 4	3 & 4
CX486M7 (3.3v)	2 & 3	2 & 3	2 & 3	2 & 3
CX486M7 (5v)	2 & 3	2 & 3	2 & 3, 4 & 5	2 & 3
AM486DXL	2 & 3	4 & 5	1 & 2, 3 & 4	3 & 4
SL80486DX	2 & 3	4 & 5	1 & 2, 3 & 4	3 & 4
80486DX	2 & 3	4 & 5	1 & 2, 3 & 4	3 & 4
SL80486DX2	2 & 3	4 & 5	1 & 2, 3 & 4	3 & 4
80486DX2	2 & 3	4 & 5	1 & 2, 3 & 4	3 & 4
80486DX4 (2x)	2 & 3	4 & 5	1 & 2, 3 & 4	3 & 4
80486DX4 (2.5x)	2 & 3	4 & 5	1 & 2, 3 & 4	3 & 4
80486DX4 (3x)	2 & 3	4 & 5	1 & 2, 3 & 4	3 & 4
P24CT	1 & 2	1 & 2	1 & 2, 3 & 4	3 & 4
P24D	1 & 2	4 & 5	1 & 2	1 & 2, 3 & 4
P24T	1 & 2	1 & 2	1 & 2	3 & 4

Note: Pins designated should be in the closed position.

CPU SPEED CONFIGURATION	
Speed	W10
25MHz	Open
33MHz	Closed
50iMHz	Open
66iMHz	Closed
75iMHz	Open
100iMHz	Closed

DMA CONFIGURATION		
DMA	W3	W4
Disabled	Open	Open
DMA1	pins 1 & 2 closed	pins 1 & 2 closed
DMA3	pins 2 & 3 closed	pins 2 & 3 closed