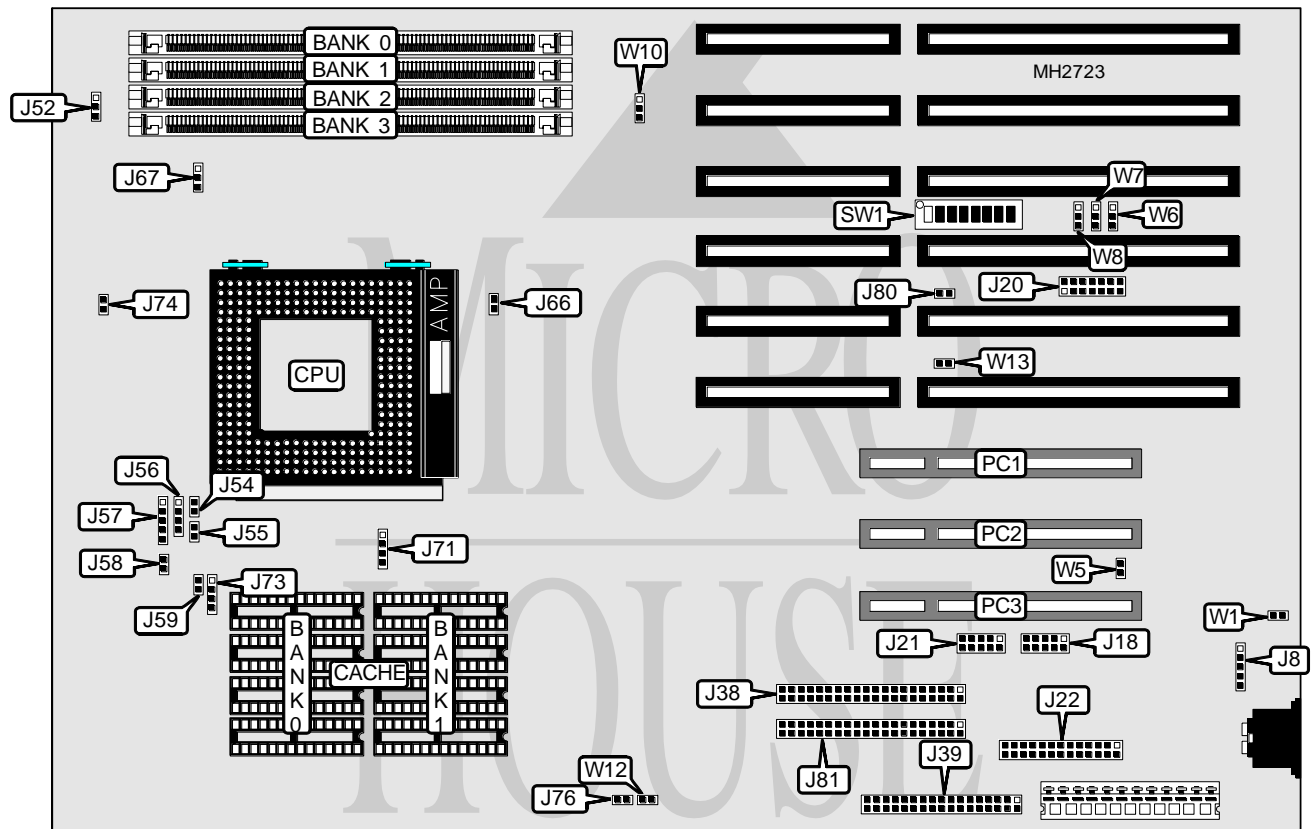


MICRONICS COMPUTERS, INC.

M 4 P I

Processor	80486SX/SL80486SX/80486DX/SL80486DX/80486DX2/SL80486DX2/ 80486DX4/Pentium Overdrive
Processor Speed	25/33/50(internal)/66(internal)/75(internal)/100(internal)MHz
Chip Set	Intel
Max. Onboard DRAM	128MB
Cache	128/256KB
BIOS	Phoenix
Dimensions	330mm x 218mm
I/O Options	32-bit PCI slots (3), floppy drive interface, IDE interfaces (2), parallel port, serial ports (2)
NPU Options	None



CONNECTIONS

Purpose	Location	Purpose	Location
Auxiliary keyboard connector	J8	IDE interface LED	J54
Serial port 1	J18	Reset switch	J55
Serial port 2	J21	Speaker	J56
Parallel port	J22	Power LED & keylock	J57
IDE interface (ISA)	J38	IDE interface (PCI)	J81
Floppy drive interface	J39	32-bit PCI slots	PC1 - PC3

Continued on next page. . .

MICRONICS COMPUTERS, INC.

M 4 P I

... continued from previous page

USER CONFIGURABLE SETTINGS		
Function	Jumper/Switch	Position
í PCI IDE IRQ select IRQ14	J19	pins 1 & 2 closed
PCI IDE IRQ select IRQ15	J19	pins 2 & 3 closed
í Factory configured - do not alter	J20	N/A
í Factory configured - do not alter	J66	Open
í Factory configured - do not alter	J67	N/A
í Parallel port ECP mode enabled	J76	Open
Parallel port ECP mode disabled	J76	Closed
í Factory configured - do not alter	J80	N/A
í Flash BIOS write protect disabled	SW1/4	On
Flash BIOS write protect enabled	SW1/4	Off
í PCI card installed	SW1/5	On
PCI card not installed	SW1/5	Off
í On board mouse enabled (uses IRQ12)	SW1/8	On
On board mouse disabled	SW1/8	Off
í Factory configured - do not alter	W1	N/A
í Factory configured - do not alter	W5	N/A
í Parallel port IRQ select IRQ5	W8	pins 2 & 3 closed
Parallel port IRQ select IRQ7	W8	pins 1 & 2 closed
í Flash BIOS mode select normal	W10	pins 2 & 3 closed
Flash BIOS mode select recovery	W10	pins 1 & 2 closed
í PCI IDE chip enabled	W12	Closed
PCI IDE chip disabled	W12	Open
í ISA IDE IRQ select IRQ14	W13	pins 1 & 2 closed
ISA IDE IRQ select IRQ15	W13	pins 2 & 3 closed

Note: The location of J19 is unidentified.

DRAM CONFIGURATION				
Size	Bank 0	Bank 1	Bank 2	Bank 3
8MB	(1) 1M x 36	(1) 1M x 36	NONE	NONE
16MB	(1) 1M x 36	(1) 1M x 36	(1) 1M x 36	(1) 1M x 36
16MB	(1) 2M x 36	(1) 2M x 36	NONE	NONE
24MB	(1) 1M x 36	(1) 1M x 36	(1) 2M x 36	(1) 2M x 36
24MB	(1) 2M x 36	(1) 2M x 36	(1) 1M x 36	(1) 1M x 36
32MB	(1) 2M x 36	(1) 2M x 36	(1) 2M x 36	(1) 2M x 36
32MB	(1) 4M x 36	(1) 4M x 36	NONE	NONE
40MB	(1) 1M x 36	(1) 1M x 36	(1) 4M x 36	(1) 4M x 36
40MB	(1) 4M x 36	(1) 4M x 36	(1) 1M x 36	(1) 1M x 36
48MB	(1) 2M x 36	(1) 2M x 36	(1) 4M x 36	(1) 4M x 36
48MB	(1) 4M x 36	(1) 4M x 36	(1) 2M x 36	(1) 2M x 36
64MB	(1) 4M x 36	(1) 4M x 36	(1) 4M x 36	(1) 4M x 36
64MB	(1) 8M x 36	(1) 8M x 36	NONE	NONE
72MB	(1) 1M x 36	(1) 1M x 36	(1) 8M x 36	(1) 8M x 36
72MB	(1) 8M x 36	(1) 8M x 36	(1) 1M x 36	(1) 1M x 36
80MB	(1) 2M x 36	(1) 2M x 36	(1) 8M x 36	(1) 8M x 36

Continued on next page...

MICRONICS COMPUTERS, INC.

M4PI

... continued from previous page

DRAM CONFIGURATION (CON'T)				
Size	Bank 0	Bank 1	Bank 2	Bank 3
80MB	(1) 8M x 36	(1) 8M x 36	(1) 2M x 36	(1) 2M x 36
96MB	(1) 4M x 36	(1) 4M x 36	(1) 8M x 36	(1) 8M x 36
96MB	(1) 8M x 36	(1) 8M x 36	(1) 4M x 36	(1) 4M x 36
128MB	(1) 8M x 36	(1) 8M x 36	(1) 8M x 36	(1) 8M x 36

CACHE CONFIGURATION		
Size	Bank 0	Bank 1
128KB	(4) 32K x 8	NONE
256KB	(4) 32K x 8	(4) 32K x 8

CACHE JUMPER CONFIGURATION		
Size	J52	J58
128KB	pins 2 & 3 closed	Open
256KB	pins 1 & 2 closed	Closed

CPU TYPE CONFIGURATION				
Type	J59	J71	J73	J74
80486SX	Closed	2 & 3	2 & 3	Open
SL80486SX	Closed	2 & 3	1 & 2, 3 & 4	Closed
80486DX	Closed	1 & 2, 3 & 4	2 & 3	Open
SL80486DX	Closed	1 & 2, 3 & 4	1 & 2, 3 & 4	Closed
80486DX2	Closed	1 & 2, 3 & 4	2 & 3	Open
SL80486DX2	Closed	1 & 2, 3 & 4	1 & 2, 3 & 4	Closed
80486DX4	Closed	1 & 2, 3 & 4	1 & 2, 3 & 4	Closed
P24T	Open	1 & 2, 3 & 4	1 & 2, 3 & 4	Closed

Note: Pins designated should be in the closed position.

CPU SPEED CONFIGURATION		
Speed	SW1/6	SW1/7
25MHz	On	On
33MHz	Off	On
50iMHz	On	Off
66iMHz	Off	On
75iMHz	On	On
100iMHz	Off	On

DMA CONFIGURATION		
DMA	W6	W7
DMA1	pins 1 & 2 closed	pins 1 & 2 closed
DMA3	pins 2 & 3 closed	pins 2 & 3 closed

PCI IRQ CONFIGURATION			
IRQ	SW1/1	SW1/2	SW/3
IRQ5	On	On	Off
IRQ11	On	Off	On

IRQ15	Off	On	On
-------	-----	----	----