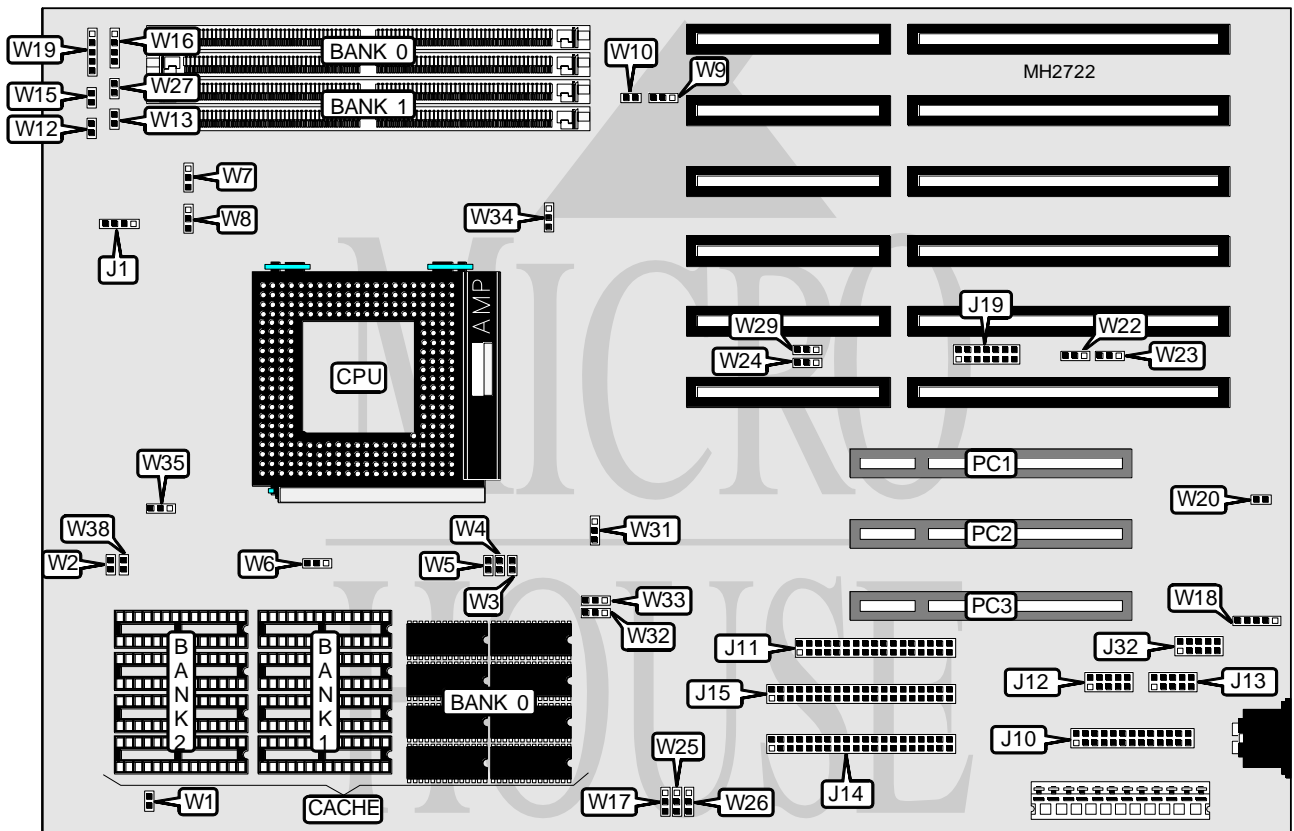


# MICRONICS COMPUTERS, INC

## M 5 4 S I

<b>Processor</b>	Pentium
<b>Processor Speed</b>	75/90/100MHz
<b>Chip Set</b>	Unidentified
<b>Max. Onboard DRAM</b>	128MB
<b>Cache</b>	256/512KB
<b>BIOS</b>	Phoenix
<b>Dimensions</b>	330mm x 218mm
<b>I/O Options</b>	32-bit PCI slots (3), floppy drive interface, IDE interfaces (2), parallel port, PS/2 mouse interface, serial ports (2)
<b>NPU Options</b>	None



CONNECTIONS			
Purpose	Location	Purpose	Location
Parallel port	J10	Turbo switch	W12
Floppy drive interface	J11	Turbo LED	W13
Serial port 1	J12	Reset switch	W15
Serial port 2	J13	Speaker	W16
IDE interface (IDE)	J14	Auxiliary keyboard connector	W18
IDE interface (PCI)	J15	Power LED & keylock	W19
PS/2 mouse interface	J32	IDE interface LED	W27
32-bit PCI slots	PCI - PC3		

Continued on next page. . .

# MICRONICS COMPUTERS, INC

## M 5 4 S I

... continued from previous page

USER CONFIGURABLE SETTINGS		
Function	Jumper	Position
í Factory configured - do not alter	J1	N/A
Factory configured - do not alter	J19	N/A
í Cache type select write back	W1	Open
Cache type select write through	W1	Closed
í CPU clock speed select 1.5x	W2	Open
CPU clock speed select 2x	W2	Closed
í Factory configured - do not alter	W9	pins 2 & 3 closed
í Flash BIOS write protect disabled	W10	Closed
Flash BIOS write protect enabled	W10	Open
í CMOS memory normal operation	W17	pins 1 & 2 closed
CMOS memory clear	W17	pins 2 & 3 closed
í Monitor type select color	W20	Closed
Monitor type select monochrome	W20	Open
í PS/2 mouse disabled	W21	Open
PS/2 mouse enabled	W21	Closed
í Factory configured - do not alter	W31	pins 1 & 2 closed
í Factory configured - do not alter	W32	pins 1 & 2 closed
í Factory configured - do not alter	W33	pins 1 & 2 closed
í Factory configured - do not alter	W34	pins 1 & 2 closed
í Factory configured - do not alter	W35	pins 2 & 3 closed

Note: The location of W21 is unidentified.

DRAM CONFIGURATION		
Size	Bank 0	Bank 1
8MB	(2) 1M x 36	NONE
16MB	(2) 1M x 36	(2) 1M x 36
16MB	(2) 2M x 36	NONE
24MB	(2) 2M x 36	(2) 1M x 36
32MB	(2) 4M x 36	NONE
32MB	(2) 2M x 36	(2) 2M x 36
40MB	(2) 4M x 36	(2) 1M x 36
48MB	(2) 4M x 36	(2) 2M x 36
64MB	(2) 8M x 36	NONE
64MB	(2) 4M x 36	(2) 4M x 36
72MB	(2) 8M x 36	(2) 1M x 36
80MB	(2) 8M x 36	(2) 2M x 36
96MB	(2) 8M x 36	(2) 4M x 36
128MB	(2) 8M x 36	(2) 8M x 36

CACHE CONFIGURATION			
Size	Bank 0	Bank 1	Bank 2
256KB	(8) 32K x 8	NONE	NONE
512KB	(8) 32K x 8	(4) 32K x 8	(4) 32K x 8

Note: Bank 0 is factory installed and is not configurable.

Continued on next page. . .

# MICRONICS COMPUTERS, INC

## M 5 4 S I

... continued from previous page

CACHE JUMPER CONFIGURATION			
Size	W6	W7	W8
256KB	pins 1 & 2 closed	pins 1 & 2 closed	pins 1 & 2 closed
512KB	pins 2 & 3 closed	pins 2 & 3 closed	pins 2 & 3 closed

CPU SPEED CONFIGURATION				
Speed	W3	W4	W5	W38
75MHz	Closed	Closed	Open	Open
90MHz	Closed	Open	Closed	Open
100MHz	Open	Closed	Open	Closed

IDE DMA CONFIGURATION		
DMA	W25	W26
Disabled	Open	Open
DMA6	pins 1 & 2 closed	pins 1 & 2 closed
DMA7	pins 2 & 3 closed	pins 2 & 3 closed

DMA ECP CONFIGURATION		
DMA	W22	W23
Disabled	Open	Open
DMA1	pins 1 & 2 closed	pins 1 & 2 closed
DMA3	pins 2 & 3 closed	pins 2 & 3 closed

IDE IRQ CONFIGURATION			
ISA IDE	PCI IDE	W24	W29
IRQ14	IRQ15	pins 2 & 3 closed	pins 1 & 2 closed
IRQ14	None	Open	pins 1 & 2 closed
None	None	Open	Open
None	IRQ15	pins 2 & 3 closed	Open