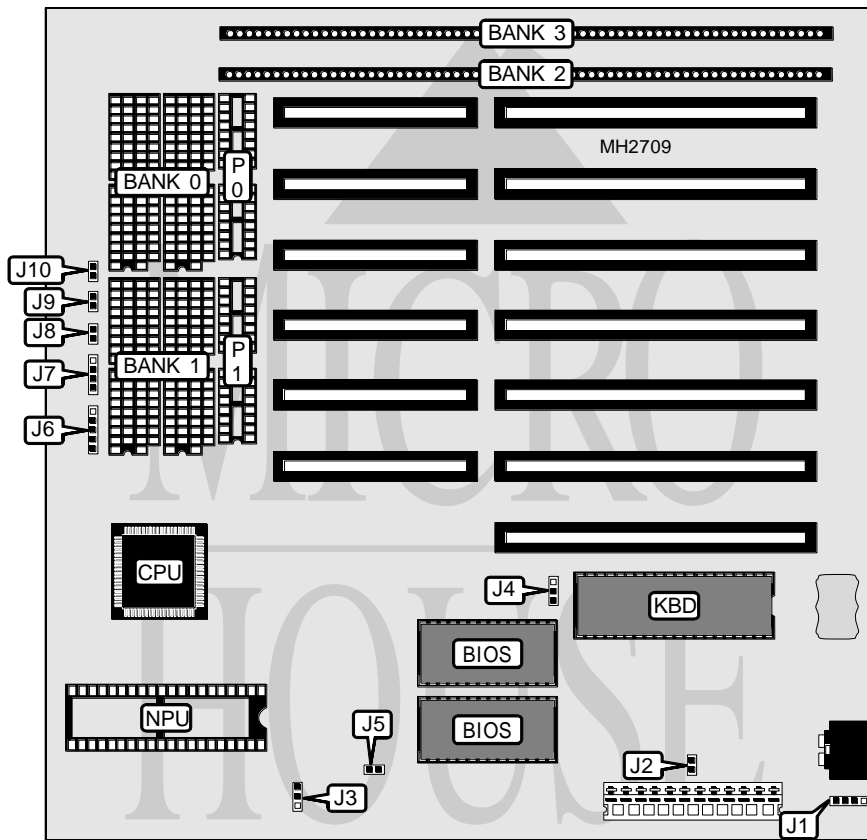


# UNIDENTIFIED MINI-AT286 (G2-206)

<b>Processor</b>	80286
<b>Processor Speed</b>	12/16MHz
<b>Chip Set</b>	Unidentified
<b>Max. Onboard DRAM</b>	4MB
<b>Cache</b>	None
<b>BIOS</b>	AMI
<b>Dimensions</b>	220mm x 220mm
<b>I/O Options</b>	None
<b>NPU Options</b>	80287



CONNECTIONS			
Purpose	Location	Purpose	Location
External battery	J1	Turbo LED	J8
Power LED & keylock	J6	Turbo switch	J9
Speaker	J7	Reset switch	J10

Continued on next page...

# UNIDENTIFIED

## MINI-AT286 (G2-206)

... continued from previous page

USER CONFIGURABLE SETTINGS		
Function	Jumper	Position
í Monitor type select color	J2	Closed
Monitor type select monochrome	J2	Open
í NPU oscillator speed select 2x	J3	pins 2 & 3 closed
NPU oscillator speed select 3x	J3	pins 1 & 2 closed
í BIOS type select 27256	J4	pins 1 & 2 closed
BIOS type select 27512	J4	pins 2 & 3 closed
í I/O bus speed 3x	J5	Open
I/O bus speed 2x	J5	Closed

DRAM CONFIGURATION						
Size	Bank 0	Parity 0	Bank 1	Parity 1	Bank 2	Bank 3
512KB	(4) 44256	(2) 41256	NONE	NONE	NONE	NONE
640KB	(4) 44256	(2) 41256	(4) 4464	(4) 4164	NONE	NONE
1MB	(4) 44256	(2) 41256	(4) 44256	(2) 41256	NONE	NONE
2MB	NONE	NONE	NONE	NONE	(2) 1M x 9	NONE
4MB	NONE	NONE	NONE	NONE	(2) 1M x 9	(2) 1M x 9