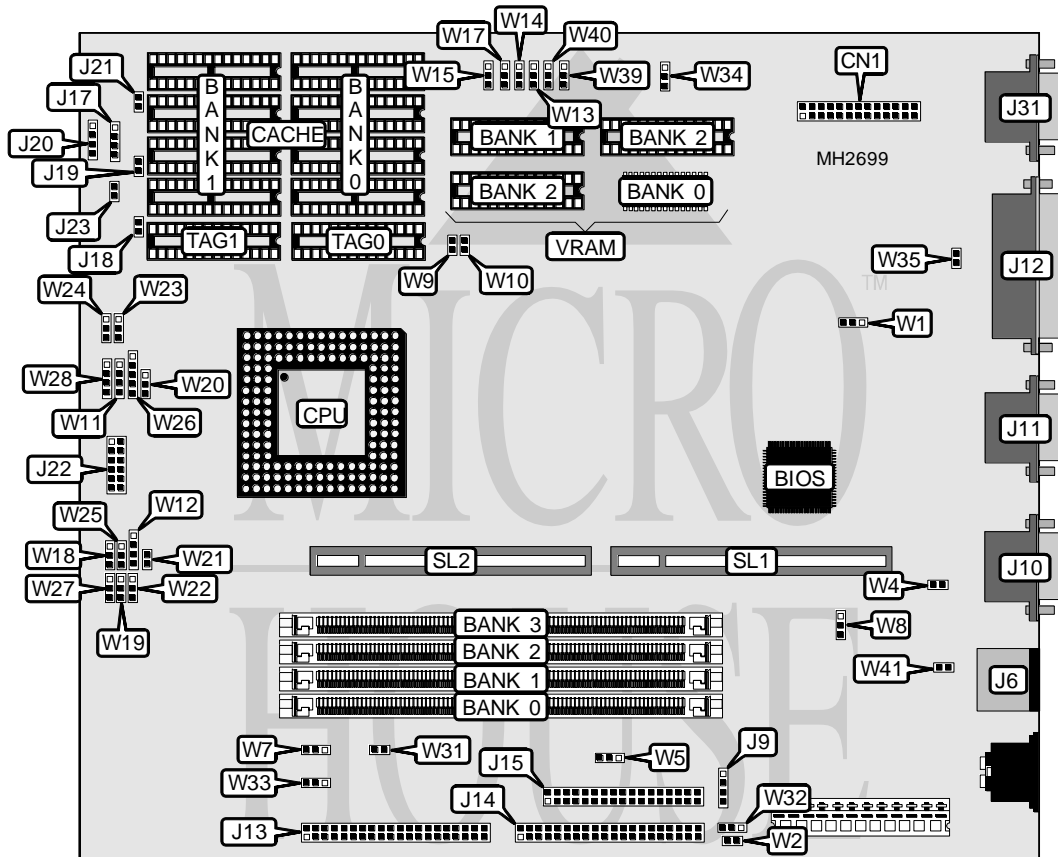


# MICRONICS COMPUTERS, INC.

## LPX30WB REV. 3A

<b>Processor</b>	80486SX/CX486DX/80486DX/AM486DXL/CX486DX2/80486DX2/SL80486DX2/80486DX4/Pentium Overdrive
<b>Processor Speed</b>	25/33/40/50(internal)/66(internal)/75(internal)/100(internal)MHz
<b>Chip Set</b>	Micronics
<b>Max. Onboard DRAM</b>	128MB
<b>Cache</b>	128KB
<b>BIOS</b>	Phoenix
<b>Dimensions</b>	260mm x 218mm
<b>I/O Options</b>	Riser card slot, floppy drive interface, IDE interface, parallel port, PS/2 mouse port, serial ports (2), VGA feature connector, VGA port
<b>NPU Options</b>	None



CONNECTIONS			
Purpose	Location	Purpose	Location
VGA feature connector	CN1	Turbo switch	J18
PS/2 mouse port	J6	Turbo LED	J19
Serial port 1	J10	Power LED & keylock	J20
Serial port 2	J11	Reset switch	J21
Parallel port	J12	Power module connector	J22
IDE interface (primary)	J13	IDE interface LED	J23
IDE interface (secondary)	J14	VGA port	J31
Floppy drive interface	J15	Riser card slot	SL1 & SL2
Speaker	J17		

Continued on next page . . .

MICRONICS COMPUTERS, INC.  
LPX30WB REV. 3A

... continued from previous page

USER CONFIGURABLE SETTINGS		
Function	Jumper	Position
í Factory configured - do not alter	J9	N/A
í Factory configured - do not alter	W1	N/A
í Monitor type select color	W2	Closed
Monitor type select monochrome	W2	Open
í Flash BIOS normal mode	W4	Open
Flash BIOS programing mode	W4	Closed
í CMOS memory normal operation	W5	pins 1 & 2 closed
CMOS memory clear	W5	pins 2 & 3 closed
í VESA IDE controller enabled	W7	pins 1 & 2 closed
VESA IDE controller disabled	W7	pins 2 & 3 closed
í IDE controller enabled	W8	pins 2 & 3 closed
IDE controller disabled	W8	pins 1 & 2 closed
í Buzzer enabled	W31	Closed
Buzzer disabled	W31	Open
í On-board VGA IRQ9 disabled	W35	Open
On-board VGA IRQ9 enabled	W35	Closed
í Factory configured - do not alter	W40	N/A
í Factory configured - do not alter	W41	N/A

DRAM CONFIGURATION				
Size	Bank 0	Bank 1	Bank 2	Bank 3
4MB	(1) 1M x 36	NONE	NONE	NONE
8MB	(1) 2M x 36	NONE	NONE	NONE
8MB	(1) 1M x 36	(1) 1M x 36	NONE	NONE
12MB	(1) 1M x 36	(1) 1M x 36	(1) 1M x 36	NONE
16MB	(1) 1M x 36	(1) 1M x 36	(1) 1M x 36	(1) 1M x 36
16MB	(1) 4M x 36	NONE	NONE	NONE
16MB	(1) 2M x 36	(1) 2M x 36	NONE	NONE
24MB	(1) 2M x 36	(1) 2M x 36	(1) 2M x 36	NONE
24MB	(1) 2M x 36	(1) 2M x 36	(1) 1M x 36	(1) 1M x 36
32MB	(1) 8M x 36	NONE	NONE	NONE
32MB	(1) 4M x 36	(1) 4M x 36	NONE	NONE
32MB	(1) 2M x 36	(1) 2M x 36	(1) 2M x 36	(1) 2M x 36
40MB	(1) 4M x 36	(1) 4M x 36	(1) 1M x 36	(1) 1M x 36
48MB	(1) 4M x 36	(1) 4M x 36	(1) 2M x 36	(1) 2M x 36
48MB	(1) 4M x 36	(1) 4M x 36	(1) 4M x 36	NONE
64MB	(1) 8M x 36	(1) 8M x 36	NONE	NONE
64MB	(1) 4M x 36	(1) 4M x 36	(1) 4M x 36	(1) 4M x 36
72MB	(1) 8M x 36	(1) 8M x 36	(1) 1M x 36	(1) 1M x 36
80MB	(1) 8M x 36	(1) 8M x 36	(1) 2M x 36	(1) 2M x 36
96MB	(1) 8M x 36	(1) 8M x 36	(1) 8M x 36	NONE
96MB	(1) 8M x 36	(1) 8M x 36	(1) 4M x 36	(1) 4M x 36
128MB	(1) 8M x 36	(1) 8M x 36	(1) 8M x 36	(1) 8M x 36

Continued on next page. ...

MICRONICS COMPUTERS, INC.  
LPX30WB REV. 3A

... continued from previous page

CACHE CONFIGURATION				
Size	Bank 0	Bank 1	TAG0	TAG1
128KB	(4) 32K x 8	NONE	(1) 8K x 8	NONE
256KB	(4) 32K x 8	(4) 32K x 8	(1) 32K x 8	(1) 32K x 8

CACHE JUMPER CONFIGURATION				
Size	W13	W14	W15	W17
None	Open	Open	Open	Open
128KB	pins 1 & 2 closed	pins 1 & 2 closed	pins 1 & 2 closed	pins 1 & 2 closed
256KB	pins 2 & 3 closed	pins 2 & 3 closed	pins 2 & 3 closed	pins 2 & 3 closed

CPU TYPE CONFIGURATION					
Type	W11	W12	W18	W19	W20
80486SX	2 & 3	Open	Open	2 & 3	Open
CX486DX	1 & 2, 3 & 4	3 & 4	Open	2 & 3	1 & 2
80486DX	1 & 2, 3 & 4	3 & 4	Open	2 & 3	Open
AM486DXL	1 & 2, 3 & 4	3 & 4	Open	2 & 3	Open
CX486DX2	1 & 2, 3 & 4	3 & 4	Open	2 & 3	1 & 2
80486DX2	1 & 2, 3 & 4	3 & 4	Open	2 & 3	2 & 3
80486DX2 (WB)	1 & 2, 3 & 4	3 & 4	Open	1 & 2	2 & 3
SL80486DX2	1 & 2, 3 & 4	3 & 4	Open	2 & 3	2 & 3
80486DX4	1 & 2, 3 & 4	3 & 4	Open	2 & 3	2 & 3
Pentium Overdrive	1 & 2, 3 & 4	3 & 4	Open	1 & 2	2 & 3

Note: Pins designated should be in closed position.

CPU TYPE CONFIGURATION (CON'T)				
Type	W21	W22	W23	W24
80486SX	Open	Open	pins 1 & 2 closed	pins 2 & 3 closed
CX486DX	Open	Open	pins 2 & 3 closed	pins 1 & 2 closed
80486DX	Open	Open	pins 1 & 2 closed	pins 2 & 3 closed
AM486DXL	Open	Open	pins 1 & 2 closed	pins 2 & 3 closed
CX486DX2	Open	Open	2 & 3	pins 1 & 2 closed
80486DX2	Open	Open	pins 1 & 2 closed	pins 2 & 3 closed
80486DX2 (WB)	Closed	pins 2 & 3 closed	pins 1 & 2 closed	pins 1 & 2 closed
SL80486DX2	Open	Open	pins 1 & 2 closed	pins 2 & 3 closed
80486DX4	Open	Open	pins 1 & 2 closed	pins 2 & 3 closed
Pentium Overdrive	Open	Open	pins 1 & 2 closed	pins 1 & 2 closed

Continued on next page. . .

**MICRONICS COMPUTERS, INC.**  
**LPX30WB REV. 3A**

... continued from previous page

CPU TYPE CONFIGURATION				
Type	W25	W26	W27	W28
80486SX	Open	Open	Open	Open
CX486DX	2 & 3	2 & 3	2 & 3	2 & 3
80486DX	Open	Open	Open	Open
AM486DXL	Open	Open	Open	Open
CX486DX2	2 & 3	2 & 3	2 & 3	2 & 3
80486DX2	Open	Open	Open	Open
80486DX2 (WB)	1 & 2	4 & 5	1 & 2	1 & 2, 3 & 4
SL80486DX2	Open	4 & 5	Open	3 & 4
80486DX4	Open	4 & 5	Open	3 & 4
Pentium Overdrive	1 & 2	1 & 2	1 & 2	3 & 4

CPU SPEED CONFIGURATION		
Speed	W9	W10
25MHz	Open	Open
33MHz	Closed	Closed
40MHz	Open	Closed
50iMHz	Open	Open
66iMHz	Closed	Closed
75iMHz	Open	Open
100iMHz	Closed	Closed

IRQ CONFIGURATION		
IRQ	W32	W33
IRQ14	pins 2 & 3 closed	pins 1 & 2 closed
IRQ15	pins 1 & 2 closed	pins 2 & 3 closed

VGA CONFIGURATION		
VGA	W34	W39
Enabled	pins 2 & 3 closed	pins 2 & 3 closed
Disabled	pins 1 & 2 closed	pins 1 & 2 closed

VRAM CONFIGURATION			
Size	Bank 0	Bank 1	Bank 2
512MB	(1) 256K x 16	NONE	NONE
1MB	(1) 256K x 16	(1) 256K x 16	NONE
2MB	(1) 256K x 16	(1) 256K x 16	(1) 256K x 16