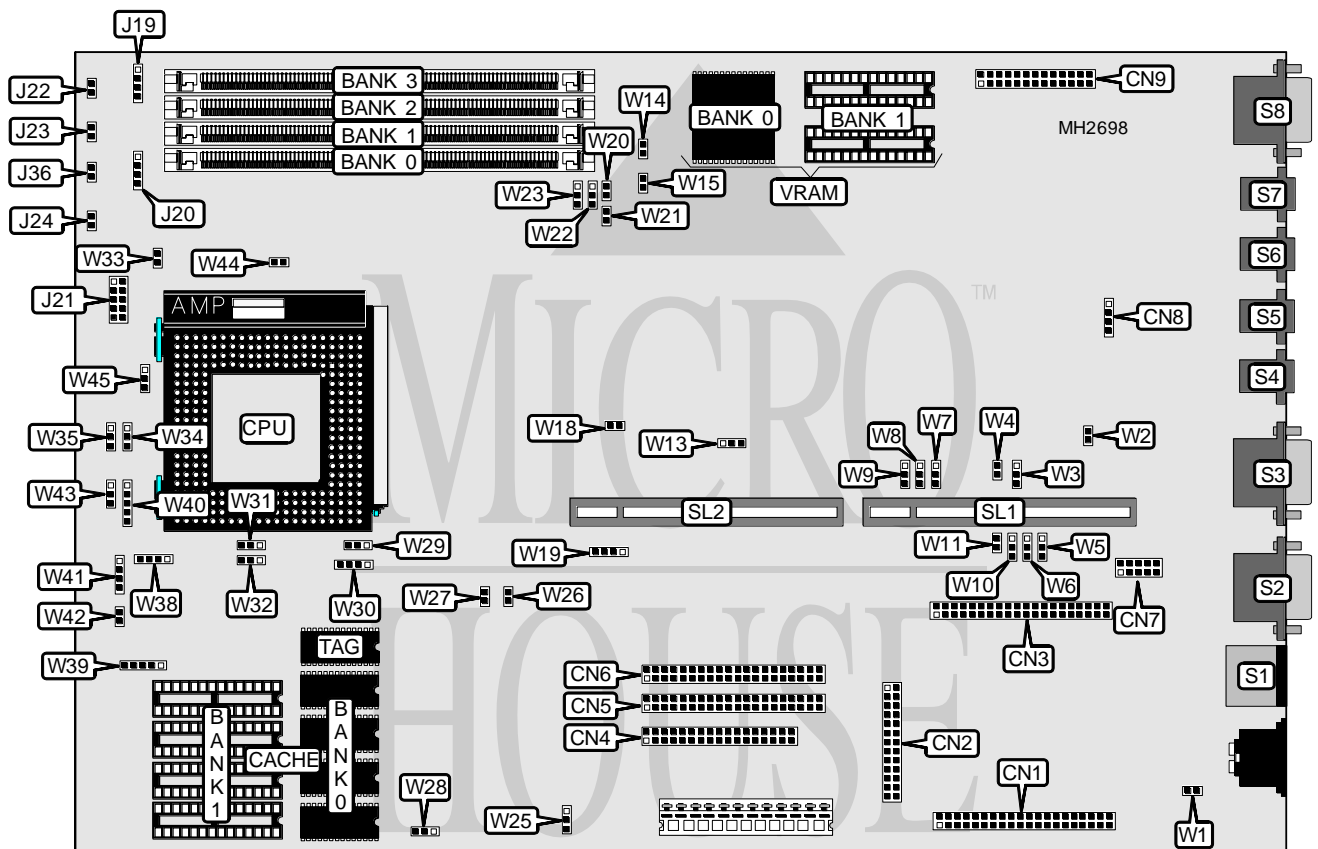


# MICRONICS COMPUTERS, INC. LPM30 (REV. 3A)

<b>Processor</b>	80486SX/SL80486SX/CX486DX/AM486DX/80486DX/SL80486DX/CX486DX2/ AM486DX2/80486DX2/SL80486DX2/AM486DX4/80486DX4/ Pentium Overdrive
<b>Processor Speed</b>	25/33/40/50(internal)/66(internal)/75(internal)/100(internal)MHz
<b>Chip Set</b>	Micronics
<b>Max. Onboard DRAM</b>	128MB
<b>Cache</b>	128/256KB
<b>BIOS</b>	Phoenix
<b>Dimensions</b>	330mm x 218mm
<b>I/O Options</b>	Riser card slot, floppy drive interface, game port, IDE interfaces (2), parallel port, PS/2 mouse port, serial ports (2), VGA feature connector, VGA port, LAN connector, modem port, audio connector, microphone input, line level input, line level output, speaker port
<b>NPU Options</b>	None



CONNECTIONS			
Purpose	Location	Purpose	Location
Modem connector	CN1	Turbo switch	J23
Parallel port	CN2	Reset switch	J24
LAN connector	CN3	IDE interface LED	J36
Floppy drive interface	CN4	PS/2 mouse port	S1
IDE interface (secondary)	CN5	Serial port 1	S2
IDE interface (primary)	CN6	Game port	S3

Continued on next page. . .

# MICRONICS COMPUTERS, INC.

## LPM30 (REV. 3A)

... continued from previous page

CONNECTIONS (CON'T)			
Purpose	Location	Purpose	Location
Serial port 2	CN7	Microphone input	S4
Audio connector	CN8	Line level input	S5
VGA Feature connector	CN9	Line level output	S6
Power LED & keylock	J19	Speaker port	S7
Speaker connector	J20	VGA port	S8
Power module connector	J21	Riser card slot	SL1 & SL2
Turbo LED	J22		

USER CONFIGURABLE SETTINGS			
Function	Jumper	Position	
í Monitor type select color	W1	Closed	
Monitor type select monochrome	W1	Open	
í Game port enabled	W2	Closed	
Game port disabled	W2	Open	
í On-board sound address select 240h	W3	pins 1 & 2 closed	
On-board sound address select 220h	W3	pins 2 & 3 closed	
í On-board sound enabled	W4	Open	
On-board sound disabled	W4	Closed	
í IRQ select IRQ5	W5	pins 2 & 3 closed	
IRQ select IRQ7	W5	pins 1 & 2 closed	
í On-board sound IRQ select IRQ5	W7	pins 1 & 2 closed	
On-board sound IRQ select IRQ9	W7	pins 2 & 3 closed	
í On-board I/O enabled	W11	Open	
On-board I/O disabled	W11	Closed	
í Factory configured - do not alter	W13	pins 1 & 2 closed	
í On-board VGA enabled	W14	Open	
On-board VGA disabled	W14	Closed	
í RAMDAC enabled	W15	Open	
RAMDAC disabled/feature enabled	W15	Closed	
í Factory configured - do not alter	W17	Open	
í Flash BIOS normal mode	W18	Open	
Flash BIOS programming mode	W18	Closed	
í Factory configured - do not alter	W19	pins 1 & 2, 3 & 4 closed	
í Buzzer enabled	W20	Closed	
Buzzer disabled	W20	Open	
í DRAM select standard 5v	W21	Open	
DRAM select micron 12v	W21	Closed	
í CMOS memory normal operation	W25	pins 1 & 2 closed	
CMOS memory clear	W25	pins 2 & 3 closed	
í IDE interface enabled	W28	pins 1 & 2 closed	
IDE interface disabled	W28	pins 2 & 3 closed	
í Factory configured - do not alter	W29	pins 2 & 3 closed	

Note: The location of W17 is unidentified.

Continued on next page...

# MICRONICS COMPUTERS, INC.

## LPM30 (REV. 3A)

... continued from previous page

DRAM CONFIGURATION				
Size	Bank 0	Bank 1	Bank 2	Bank 3
4MB	(1) 1M x 36	NONE	NONE	NONE
8MB	(1) 2M x 36	NONE	NONE	NONE
8MB	(1) 1M x 36	(1) 1M x 36	NONE	NONE
12MB	(1) 1M x 36	(1) 1M x 36	(1) 1M x 36	NONE
16MB	(1) 1M x 36	(1) 1M x 36	(1) 1M x 36	(1) 1M x 36
16MB	(1) 4M x 36	NONE	NONE	NONE
16MB	(1) 2M x 36	(1) 2M x 36	NONE	NONE
24MB	(1) 2M x 36	(1) 2M x 36	(1) 2M x 36	NONE
24MB	(1) 2M x 36	(1) 2M x 36	(1) 1M x 36	(1) 1M x 36
32MB	(1) 8M x 36	NONE	NONE	NONE
32MB	(1) 4M x 36	(1) 4M x 36	NONE	NONE
32MB	(1) 2M x 36	(1) 2M x 36	(1) 2M x 36	(1) 2M x 36
40MB	(1) 4M x 36	(1) 4M x 36	(1) 1M x 36	(1) 1M x 36
48MB	(1) 4M x 36	(1) 4M x 36	(1) 2M x 36	(1) 2M x 36
48MB	(1) 4M x 36	(1) 4M x 36	(1) 4M x 36	NONE
64MB	(1) 8M x 36	(1) 8M x 36	NONE	NONE
64MB	(1) 4M x 36	(1) 4M x 36	(1) 4M x 36	(1) 4M x 36
72MB	(1) 8M x 36	(1) 8M x 36	(1) 1M x 36	(1) 1M x 36
80MB	(1) 8M x 36	(1) 8M x 36	(1) 2M x 36	(1) 2M x 36
96MB	(1) 8M x 36	(1) 8M x 36	(1) 8M x 36	NONE
96MB	(1) 8M x 36	(1) 8M x 36	(1) 4M x 36	(1) 4M x 36
128MB	(1) 8M x 36	(1) 8M x 36	(1) 8M x 36	(1) 8M x 36

CACHE CONFIGURATION			
Size	Bank 0	Bank 1	TAG
128KB	(4) 32K x 8	NONE	(1) 8K x 8
256KB	(4) 32K x 8	(4) 32K x 8	(1) 32K x 8

CACHE JUMPER CONFIGURATION		
Size	W39	W42
128KB	pins 1 & 2, 3 & 4 closed	Open
256KB	pins 2 & 3, 4 & 5 closed	Closed

Continued on next page. ...

**MICRONICS COMPUTERS, INC.**  
**LPM30 (REV. 3A)**

... continued from previous page

CPU TYPE CONFIGURATION					
Type	W22	W23	W30	W31	W32
80486SX	2 & 3	1 & 2	2 & 3	2 & 3	2 & 3
SL80486SX	2 & 3	1 & 2	1 & 2, 3 & 4	2 & 3	2 & 3
CX486DX	1 & 2	2 & 3	1 & 2, 3 & 4	1 & 2	2 & 3
AM486DX	2 & 3	1 & 2	1 & 2, 3 & 4	2 & 3	2 & 3
80486DX	2 & 3	1 & 2	1 & 2, 3 & 4	2 & 3	2 & 3
SL80486DX	2 & 3	1 & 2	1 & 2, 3 & 4	2 & 3	2 & 3
CX486DX2	1 & 2	2 & 3	1 & 2, 3 & 4	1 & 2	2 & 3
AM486DX2	2 & 3	1 & 2	1 & 2, 3 & 4	2 & 3	2 & 3
80486DX2	2 & 3	1 & 2	1 & 2, 3 & 4	2 & 3	2 & 3
80486DX2(WB)	1 & 2	1 & 2	1 & 2, 3 & 4	2 & 3	1 & 2
SL80486DX2	2 & 3	1 & 2	1 & 2, 3 & 4	2 & 3	2 & 3
AM486DXL4	2 & 3	1 & 2	1 & 2, 3 & 4	Open	2 & 3
80486DX4	2 & 3	1 & 2	1 & 2, 3 & 4	2 & 3	2 & 3
Pentium Overdrive	1 & 2	1 & 2	1 & 2, 3 & 4	2 & 3	1 & 2

Note: Pins designated should be in closed position.

CPU TYPE CONFIGURATION (CON'T)					
Type	W33	W34	W35	W38	W40
80486SX	Open	Open	Open	3 & 4	4 & 5
SL80486SX	Open	Open	1 & 2	3 & 4	4 & 5
CX486DX	Open	1 & 2	Open	3 & 4	2 & 3
AM486DX	Open	Open	Open	1 & 2, 3 & 4	4 & 5
80486DX	Open	Open	Open	3 & 4	4 & 5
SL80486DX	Open	Open	1 & 2	3 & 4	4 & 5
CX486DX2	Open	1 & 2	Open	3 & 4	2 & 3
AM486DX2	Open	Open	Open	1 & 2, 3 & 4	4 & 5
80486DX2	Open	Open	Open	3 & 4	4 & 5
80486DX2(WB)	Closed	1 & 2	2 & 3	3 & 4	4 & 5
SL80486DX2	Open	Open	1 & 2	3 & 4	4 & 5
AM486DXL4	Open	2 & 3	Open	1 & 2, 3 & 4	4 & 5
80486DX4	Open	Open	Open	3 & 4	4 & 5
Pentium Overdrive	Open	Open	Open	2 & 3	1 & 2

Note: Pins designated should be in closed position.

Continued on next page. ...

# MICRONICS COMPUTERS, INC.

## LPM30 (REV. 3A)

... continued from previous page

CPU TYPE CONFIGURATION (CON'T)				
Type	W41	W43	W44	W45
80486SX	3 & 4	1 & 2	Open	Open
SL80486SX	3 & 4	1 & 2	Open	Open
CX486DX	2 & 3	2 & 3	Open	Open
AM486DX	Open	1 & 2	Closed	1 & 2
80486DX	3 & 4	1 & 2	Open	Open
SL80486DX	3 & 4	1 & 2	Open	Open
CX486DX2	2 & 3	2 & 3	Open	Open
AM486DX2	Open	1 & 2	Closed	1 & 2
80486DX2	3 & 4	1 & 2	Open	Open
80486DX2(WB)	1 & 2, 3 & 4	1 & 2	Open	Open
SL80486DX2	3 & 4	1 & 2	Open	Open
AM486DXL4	Open	1 & 2	Closed	Open
80486DX4	3 & 4	1 & 2	Open	Open
Pentium Overdrive	3 & 4	1 & 2	Open	Open

Note: Pins designated should be in closed position.

CPU SPEED CONFIGURATION		
Speed	W26	W27
25MHz	Open	Open
33MHz	Open	Closed
40MHz	Closed	Open
50iMHz	Open	Open
66iMHz	Open	Closed
75iMHz	Open	Open
100iMHz	Open	Closed

DMA CONFIGURATION		
DMA	W6	W10
None	Open	Open
DMA1	pins 1 & 2 closed	pins 1 & 2 closed
DMA3	pins 2 & 3 closed	pins 2 & 3 closed

DRQ CONFIGURATION		
DRQ	W8	W9
None	pins 2 & 3 closed	pins 2 & 3 closed
DRQ0	pins 1 & 2 closed	pins 2 & 3 closed
DRQ1	pins 2 & 3 closed	pins 1 & 2 closed
DRQ3	pins 1 & 2 closed	pins 1 & 2 closed

VRAM CONFIGURATION		
Size	Bank 0	Bank 1
1MB	(2) 256K x 16	NONE
2MB	(2) 256K x 16	(2) 256K x 16

Note: Bank 0 is factory installed and is not configurable.

