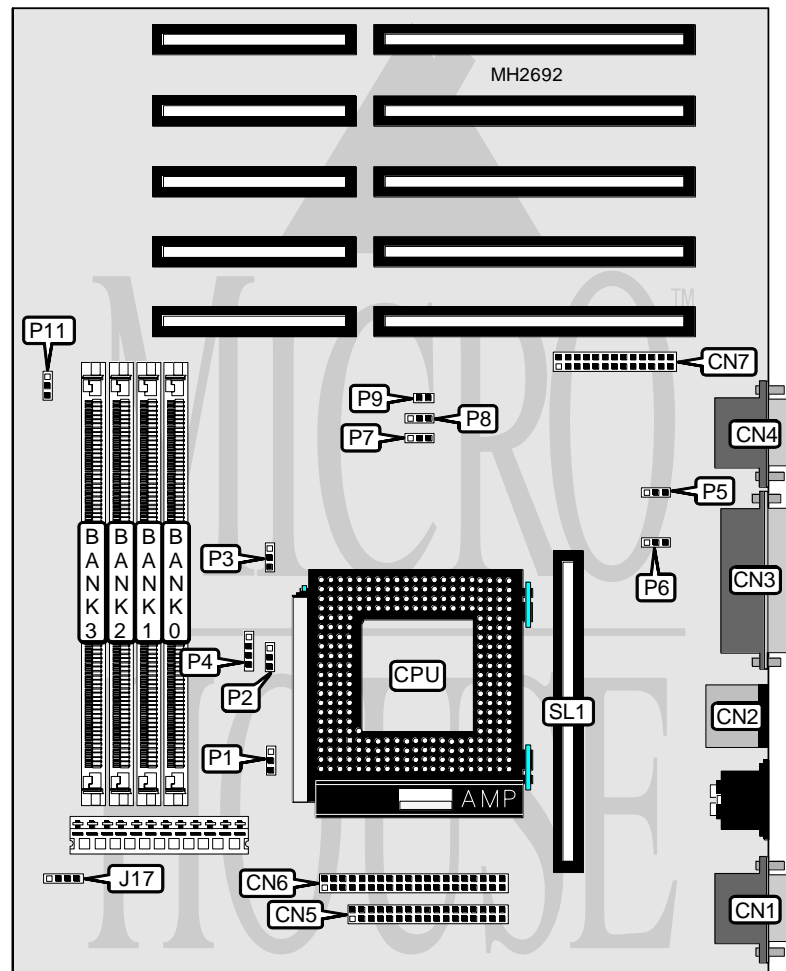


COMPAQ COMPUTER CORPORATION

PROLINEA MT

Processor	80486SX/80486SX2/80487SX/80486DX/ODP486SX/80486DX2/Pentium Overdrive
Processor Speed	25/33/50(internal)/66(internal)MHz
Chip Set	Compaq
Max. Onboard DRAM	64MB
Cache	128KB (on external cache card)
BIOS	AMI
Dimensions	330mm x 218mm
I/O Options	External cache card slot, floppy drive interface, IDE interface, parallel port, PS/2 mouse port, serial port, VGA feature connector, VGA port
NPU Options	None



CONNECTIONS			
Purpose	Location	Purpose	Location
Serial port	CN1	IDE interface	CN6
PS/2 mouse port	CN2	VGA feature connector	CN7
Parallel port	CN3	External battery	J17
VGA port	CN4	Speaker	P11
Floppy drive interface	CN5	External cache card slot	SL1

Continued next page. . .

COMPAQ COMPUTER CORPORATION

PROLINEA MT

... continued from previous page

USER CONFIGURABLE SETTINGS		
Function	Jumper	Position
í Pentium Overdrive mode select write back	P1	pins 2 & 3 closed
Pentium Overdrive mode select write through	P1	pins 1 & 2 closed
í On board video enabled	P5	pins 2 & 3 closed
On board video disabled	P5	pins 1 & 2 closed
í Parallel port IRQ select IRQ7	P8	pins 1 & 2 closed
Parallel port IRQ select IRQ5	P8	pins 2 & 3 closed
í CMOS memory normal operation	P9	Closed
CMOS memory clear	P9	Open

DRAM CONFIGURATION				
Size	Bank 0	Bank 1	Bank 2	Bank 3
4MB	(1) 1M x 36	NONE	NONE	NONE
5MB	(1) 1M x 36	(1) 256K x 36	NONE	NONE
6MB	(1) 1M x 36	(1) 256K x 36	(1) 256K x 36	NONE
7MB	(1) 1M x 36	(1) 256K x 36	(1) 256K x 36	(1) 256K x 36
8MB	(1) 1M x 36	(1) 1M x 36	NONE	NONE
9MB	(1) 1M x 36	(1) 1M x 36	(1) 256K x 36	NONE
10MB	(1) 1M x 36	(1) 1M x 36	(1) 256K x 36	(1) 256K x 36
12MB	(1) 1M x 36	(1) 1M x 36	(1) 1M x 36	NONE
13MB	(1) 1M x 36	(1) 1M x 36	(1) 1M x 36	(1) 256K x 36
16MB	(1) 1M x 36	(1) 1M x 36	(1) 1M x 36	(1) 1M x 36
20MB	(1) 1M x 36	(1) 4M x 36	NONE	NONE
21MB	(1) 1M x 36	(1) 4M x 36	(1) 256K x 36	NONE
22MB	(1) 1M x 36	(1) 4M x 36	(1) 256K x 36	(1) 256K x 36
24MB	(1) 1M x 36	(1) 4M x 36	(1) 1M x 36	NONE
25MB	(1) 1M x 36	(1) 4M x 36	(1) 1M x 36	(1) 256K x 36
28MB	(1) 1M x 36	(1) 4M x 36	(1) 1M x 36	(1) 1M x 36
36MB	(1) 1M x 36	(1) 4M x 36	(1) 4M x 36	NONE
36MB	(1) 1M x 36	(1) 8M x 36	NONE	NONE
37MB	(1) 1M x 36	(1) 4M x 36	(1) 4M x 36	(1) 256K x 36
37MB	(1) 1M x 36	(1) 8M x 36	(1) 256K x 36	NONE
38MB	(1) 1M x 36	(1) 8M x 36	(1) 256K x 36	(1) 256K x 36
40MB	(1) 1M x 36	(1) 4M x 36	(1) 4M x 36	(1) 1M x 36
40MB	(1) 1M x 36	(1) 8M x 36	(1) 1M x 36	NONE
41MB	(1) 1M x 36	(1) 8M x 36	(1) 1M x 36	(1) 256K x 36
44MB	(1) 1M x 36	(1) 8M x 36	(1) 1M x 36	(1) 1M x 36
52MB	(1) 1M x 36	(1) 4M x 36	(1) 4M x 36	(1) 4M x 36
52MB	(1) 1M x 36	(1) 8M x 36	(1) 4M x 36	NONE
53MB	(1) 1M x 36	(1) 8M x 36	(1) 4M x 36	(1) 256K x 36
56MB	(1) 1M x 36	(1) 8M x 36	(1) 4M x 36	(1) 1M x 36
64MB	(1) 1M x 36	(1) 8M x 36	(1) 4M x 36	(1) 4M x 36

Note: When 64MB of memory is installed, Bank 0 is ignored. Do not remove the 1M x 36 from Bank 0.

Continued next page...

COMPAQ COMPUTER CORPORATION

PROLINEA MT

... continued from previous page

CPU TYPE CONFIGURATION					
Type	P2	P3	P4	P6	P7
80486SX-25	1 & 2	1 & 2	3 & 4	1 & 2	1 & 2
80486SX-33	1 & 2	1 & 2	3 & 4	1 & 2	2 & 3
80487SX-25	1 & 2	1 & 2	3 & 4	1 & 2	1 & 2
80486DX-25	2 & 3	2 & 3	1 & 2	1 & 2	1 & 2
80486DX-33	2 & 3	2 & 3	1 & 2	1 & 2	2 & 3
80486SX2-66	2 & 3	2 & 3	1 & 2	1 & 2	2 & 3
80486DX2-50	2 & 3	2 & 3	1 & 2	1 & 2	1 & 2
80486DX2-66	2 & 3	2 & 3	1 & 2	1 & 2	2 & 3
ODP	2 & 3	2 & 3	2 & 3	1 & 2	N/A
ODPR	2 & 3	2 & 3	1 & 2	1 & 2	N/A
Pentium ODP	2 & 3	2 & 3	2 & 3	2 & 3	N/A

Note: N/A - jumper setting depends on processor speed. Pins designated should be in the closed position.

CPU SPEED CONFIGURATION	
Speed	P7
25MHz	pins 1 & 2 closed
33MHz	pins 2 & 3 closed
50MHz	pins 1 & 2 closed
66MHz	pins 2 & 3 closed