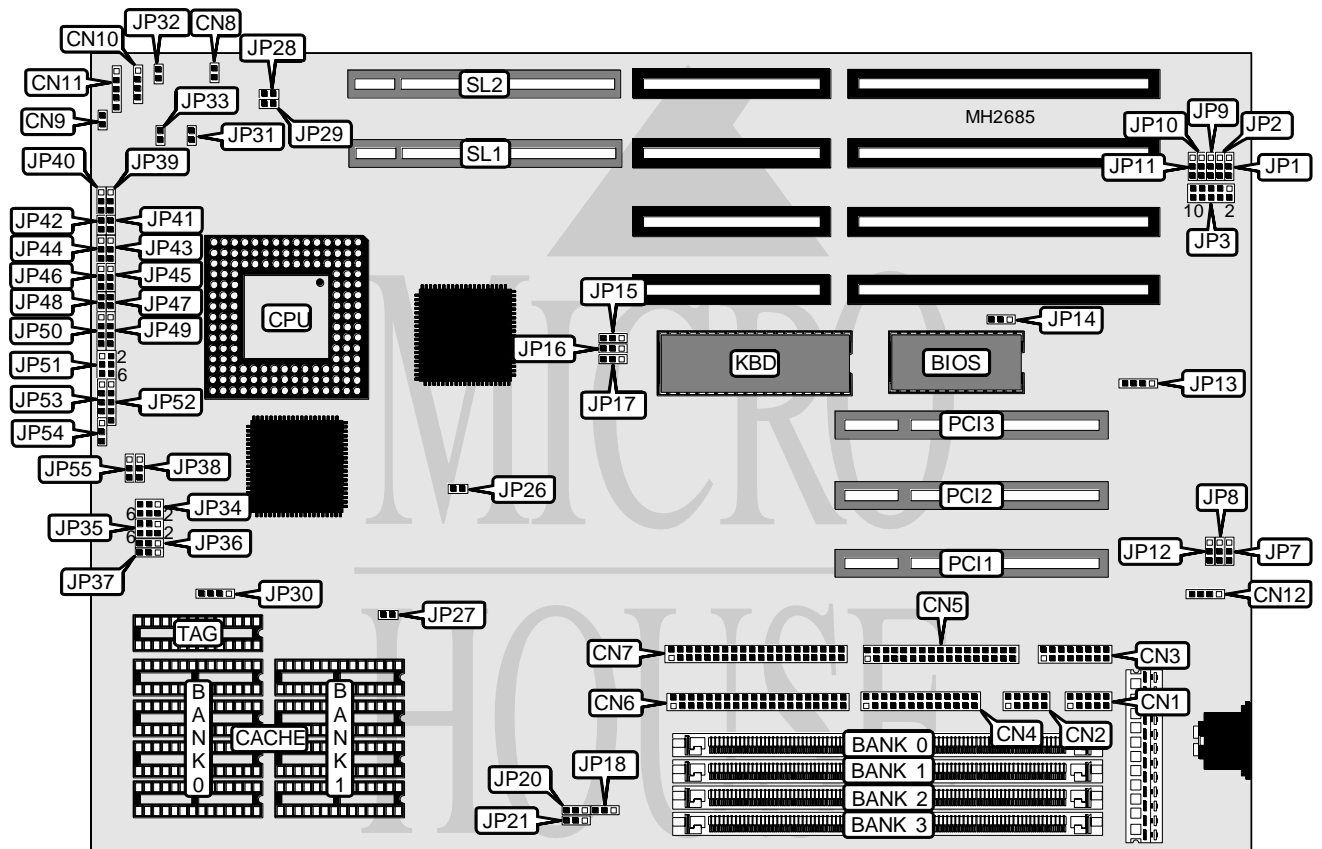


VISION TECHNOLOGIES VIP 486

Processor	CX486S/80486SX/SL80486SX/80486SX2/SL80486SX2/CX486DX/AMD486DX/U5S/80486DX/ SL80486DX/AMD486DX2/CX486M1/80486DX2/SL80486DX2/ AMD486DX4/Pentium Overdrive
Processor Speed	20/25/33/40/50(internal)/50/66(internal)/75(internal)/100(internal)MHz
Chip Set	UMC
Max. Onboard DRAM	128MB
Cache	128/256/512KB
BIOS	Award
Dimensions	304mm x 220mm
I/O Options	32-bit VESA local bus slots (2), 32-bit PCI slots (3), floppy drive interface, game port, green PC connector, IDE interfaces(2), parallel port, serial ports (2)
NPU Options	None



Continued on next page. . .

VISION TECHNOLOGIES

VIP486

... continued from previous page

CONNECTIONS			
Purpose	Location	Purpose	Location
Serial port 1	CN1	Speaker	CN10
Serial port 2	CN2	Power LED & keylock	CN11
Game port	CN3	External battery	CN12
Parallel port	CN4	Green PC connector	JP31
Floppy drive interface	CN5	Turbo switch	JP32
IDE interface (primary)	CN6	Reset switch	JP33
IDE interface (secondary)	CN7	32-bit PCI slots	PCI1 - PCI4
Turbo LED	CN8	32-bit VESA local bus slots	SL1 - SL2
IDE interface LED	CN9		

USER CONFIGURABLE SETTINGS		
Function	Jumper	Position
í Factory configured - do not alter	JP12	N/A
í CMOS memory normal operation	JP13	pins 1 & 2 closed
CMOS memory clear	JP13	pins 3 & 4 closed
í Factory configured - do not alter	JP18	N/A
í Factory configured - do not alter	JP27	N/A
í Factory configured - do not alter	JP46	N/A
í CPU type select all CPU's	JP48	Open
CPU type select Cyrix M1	JP48	Closed
í Cache type select write through	JP54	pins 1 & 2 closed
Cache type select write back	JP54	pins 2 & 3 closed

DRAM CONFIGURATION				
Size	Bank 0	Bank 1	Bank 2	Bank 3
2MB	(1) 512K x 36	NONE	NONE	NONE
4MB	(1) 512K x 36	(1) 512K x 36	NONE	NONE
4MB	(1) 1M x 36	NONE	NONE	NONE
8MB	(1) 512K x 36	(1) 512K x 36	(1) 512K x 36	(1) 512K x 36
8MB	(1) 1M x 36	(1) 1M x 36	NONE	NONE
8MB	(1) 2M x 36	NONE	NONE	NONE
16MB	(1) 1M x 36	(1) 1M x 36	(1) 1M x 36	(1) 1M x 36
16MB	(1) 2M x 36	(1) 2M x 36	NONE	NONE
16MB	(1) 4M x 36	NONE	NONE	NONE
32MB	(1) 2M x 36	(1) 2M x 36	(1) 2M x 36	(1) 2M x 36
32MB	(1) 4M x 36	(1) 4M x 36	NONE	NONE
32MB	(1) 8M x 36	NONE	NONE	NONE
64MB	(1) 4M x 36	(1) 4M x 36	(1) 4M x 36	(1) 4M x 36
64MB	(1) 8M x 36	(1) 8M x 36	NONE	NONE
128MB	(1) 8M x 36	(1) 8M x 36	(1) 8M x 36	(1) 8M x 36

Continued on next page...

VISION TECHNOLOGIES

VIP 486

... continued from previous page

CACHE CONFIGURATION			
Size	Bank 0	Bank 1	TAG
128KB	(4) 32K x 8	NONE	(1) 8K x 8
256KB	(4) 32K x 8	(4) 32K x 8	(1) 32K x 8
512KB	(4) 128K x 8	NONE	(1) 32K x 8

CACHE JUMPER CONFIGURATION			
Size	JP30	JP36	JP37
128KB	Open	pins 1 & 2 closed	pins 2 & 3 closed
256KB	pins 1 & 2 closed	pins 2 & 3 closed	pins 1 & 2 closed
512KB	pins 1 & 2, 3 & 4 closed	pins 2 & 3 closed	pins 2 & 3 closed

CPU TYPE CONFIGURATION				
Type	JP39	JP43	JP44	JP45
CX486S	pins 1 & 2 closed	pins 2 & 3 closed	pins 2 & 3 closed	pins 1 & 2 closed
80486SX	Open	Open	Open	Open
SL80486SX	Open	pins 1 & 2 closed	Open	pins 1 & 2 closed
80486SX2	Open	Open	Open	Open
SL80486SX2	Open	pins 1 & 2 closed	Open	pins 1 & 2 closed
CX486DX	pins 1 & 2 closed	pins 2 & 3 closed	2 & 3	pins 1 & 2 closed
AM486DX	Open	Open	Open	Open
U5S	Open	Open	Open	pins 2 & 3 closed
80486DX	Open	Open	Open	Open
SL80486DX	Open	pins 1 & 2 closed	Open	pins 1 & 2 closed
AM486DX2	Open	Open	Open	Open
CX486M1	pins 1 & 2 closed	pins 1 & 2 closed	pins 2 & 3 closed	pins 1 & 2 closed
80486DX2	Open	Open	Open	Open
SL80486DX2	Open	pins 1 & 2 closed	Open	pins 1 & 2 closed
AM486DX4	Open	Open	Open	Open
P24D	Open	pins 1 & 2 closed	Open	pins 1 & 2 closed
P24T	pins 2 & 3 closed	pins 1 & 2 closed	pins 1 & 2 closed	pins 1 & 2 closed

Continued on next page...

VISION TECHNOLOGIES

VIP 486

... continued from previous page

CPU TYPE CONFIGURATION (CON'T)					
Type	JP49	JP50	JP51	JP52	JP53
CX486S	1 & 2	Open	3 & 4	1 & 2, 3 & 4	1 & 2, 3 & 4
80486SX	Open	Open	1 & 2	Open	2 & 3
SL80486SX	Open	Open	3 & 4	2 & 3, 4 & 5	2 & 3
80486SX2	Open	Open	1 & 2	Open	2 & 3
SL80486SX2	Open	Open	3 & 4	2 & 3, 4 & 5	2 & 3
CX486DX	2 & 3	3 & 4	3 & 4	1 & 2, 3 & 4	1 & 2, 3 & 4
AMD486DX	Open	3 & 4	1 & 2	Open	2 & 3
U5S	3 & 4	1 & 2, 3 & 4	1 & 2	Open	2 & 3
80486DX	Open	3 & 4	1 & 2	Open	1 & 2, 3 & 4
SL80486DX	Open	3 & 4	3 & 4	2 & 3, 4 & 5	1 & 2, 3 & 4
AMD486DX2	Open	3 & 4	1 & 2	Open	2 & 3
CX486M1	Open	3 & 4	3 & 4	2 & 3, 4 & 5	1 & 2, 3 & 4
80486DX2	Open	3 & 4	1 & 2	Open	1 & 2, 3 & 4
SL80486DX2	Open	3 & 4	3 & 4	2 & 3, 4 & 5	1 & 2, 3 & 4
AMD486DX4	Open	3 & 4	1 & 2	Open	2 & 3
P24D	Open	3 & 4	3 & 4	2 & 3, 4 & 5	1 & 2, 3 & 4
P24T	2 & 3	2 & 3	3 & 4, 5 & 6	2 & 3, 4 & 5	1 & 2, 3 & 4

Note: Pins designated should be in closed position.

CPU TYPE CONFIGURATION	
Type	JP35
AMD	pins 2 & 4, 3 & 5 closed
UMC	pins 2 & 4, 3 & 5 closed
Cyrix	pins 1 & 3, 4 & 6 closed
Intel	pins 1 & 3, 2 & 4 closed

CPU TYPE CONFIGURATION (INTEL P24D ONLY)			
Type	JP41	JP42	JP47
All CPU types	Open	Open	Open
P24D	Closed	Closed	Closed

CPU SPEED CONFIGURATION			
Speed	JP15	JP16	JP17
20MHz	pins 2 & 3 closed	pins 2 & 3 closed	pins 2 & 3 closed
25MHz	pins 2 & 3 closed	pins 2 & 3 closed	pins 1 & 2 closed
33MHz	pins 1 & 2 closed	pins 1 & 2 closed	pins 1 & 2 closed
40MHz	pins 2 & 3 closed	pins 1 & 2 closed	pins 1 & 2 closed
50iMHz	pins 2 & 3 closed	pins 2 & 3 closed	pins 1 & 2 closed
50MHz	pins 1 & 2 closed	pins 2 & 3 closed	pins 2 & 3 closed
66iMHz	pins 1 & 2 closed	pins 1 & 2 closed	pins 1 & 2 closed
75iMHz	pins 2 & 3 closed	pins 2 & 3 closed	pins 1 & 2 closed
100iMHz	pins 1 & 2 closed	pins 1 & 2 closed	pins 1 & 2 closed

Continued on next page. . .

VISION TECHNOLOGIES

VIP 486

... continued from previous page

CPU SPEED CONFIGURATION (80486DX4 ONLY)	
Speed	JP40
2x	pins 2 & 3 closed
2.5x	pins 1 & 2 closed
3x	Open

CPU VOLTAGE CONFIGURATION			
Voltage	JP34	JP38	JP55
3.45v	pins 1 & 2 closed	pins 1 & 2 closed	pins 1 & 2 closed
3.6v	pins 5 & 6 closed	pins 1 & 2 closed	pins 1 & 2 closed
5v	Open	pins 2 & 3 closed	pins 2 & 3 closed

KEYBOARD CONFIGURATION			
Setting	JP1	JP2	JP3
External key control	2 & 3	2 & 3	1 & 3, 2 & 4, 5 & 7, 6 & 8
Internal key control	1 & 2	1 & 2	7 & 9, 8 & 10

Note: Pins designated should be in closed position.

KEYBOARD CONFIGURATION (CON'T)			
Setting	JP9	JP10	JP11
External key control	pins 2 & 3 closed	pins 2 & 3 closed	pins 2 & 3 closed
Internal key control	pins 1 & 2 closed	pins 1 & 2 closed	pins 1 & 2 closed

VESA WAIT STATE CONFIGURATION	
Wait states	JP28
0 wait states	Open
1 wait state	Closed

BUS SPEED CONFIGURATION	
CPU speed	JP29
<= 33MHz	Open
> 33MHz	Closed

FLASH BIOS CONFIGURATION	
Voltage	JP14
Normal	Open
5v	pins 2 & 3 closed
12v	pins 1 & 2 closed

REAL TIME CLOCK CONFIGURATION	
Type	JP26
DS12887	Closed
146818	Open

Continued on next page. . .

VISION TECHNOLOGIES

VIP 486

... continued from previous page

HDD CONFIGURATION		
Speed	JP20	JP21
Slow	pins 1 & 2 closed	pins 1 & 2 closed
0	pins 2 & 3 closed	pins 2 & 3 closed
1	pins 1 & 2 closed	pins 2 & 3 closed
2	pins 2 & 3 closed	pins 1 & 2 closed

DACK/DRQ CONFIGURATION		
DACK/DRQ	JP7	JP8
DACK1/DRQ1	pins 1 & 2 closed	pins 1 & 2 closed
DACK3/DRQ3	pins 2 & 3 closed	pins 2 & 3 closed