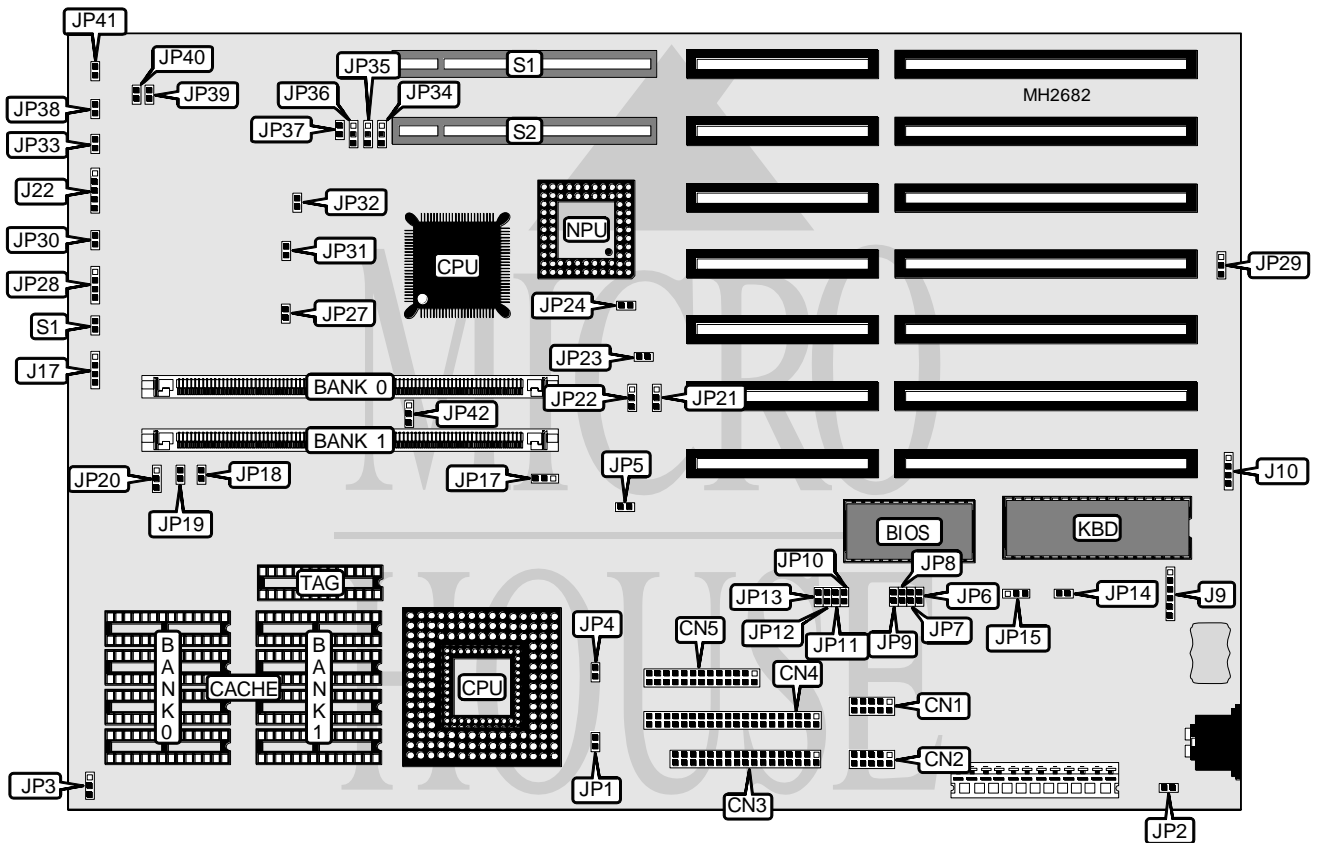


# VISION TECHNOLOGIES VAES3486

<b>Processor</b>	80386DX/CX486DLC/CX486S/CX487S/80486SX(PQFP)/ 80486SX/80486DX/80486DX2/Pentium Overdrive
<b>Processor Speed</b>	16/20/25/33/40/50(internal)/50/66(internal)MHz
<b>Chip Set</b>	OPTI
<b>Max. Onboard DRAM</b>	64MB
<b>Cache</b>	64/128/256KB
<b>BIOS</b>	AMI
<b>Dimensions</b>	330mm x 218mm
<b>I/O Options</b>	32-bit VESA local bus slots (2), floppy drive interface, IDE interface, green PC connector, parallel port, serial ports (2)
<b>NPU Options</b>	CX387



CONNECTIONS			
Purpose	Location	Purpose	Location
Serial port 1	CN1	Power supply/sleep mode	JP2
Serial port 2	CN2	Speaker	JP28
Floppy drive interface	CN3	Green PC connector	JP30
IDE interface	CN4	Turbo switch	JP33
Parallel port	CN5	Turbo LED	JP38
External battery	J10	Reset switch	S1
IDE interface LED	J17	32-bit VESA local bus slots	SL1 & SL2
Power LED & keylock	J22		

Continued on next page . . .

# VISION TECHNOLOGIES

## VAES3486

... continued from previous page

USER CONFIGURABLE SETTINGS		
Function	Jumper	Position
í Factory configured - do not alter	J9	N/A
í Pentium Overdrive enabled	JP1	Open
Pentium Overdrive disabled	JP1	Closed
í VESA supports bus mastering	JP4	Closed
VESA does not support bus mastering	JP4	Open
í On board PS/2 style mouse enabled	JP14	Closed
On board PS/2 style mouse disabled	JP14	Open
í Power down mode enabled	JP15	pins 2 & 3 closed
Power down mode disabled	JP15	pins 1 & 2 closed
í Keyboard password clear	JP16	Closed
Keyboard password enabled	JP16	Open
í NPU disabled	JP24	pins 1 & 2 closed
NPU enabled	JP24	pins 2 & 3 closed
í CMOS memory normal operation	JP29	pins 2 & 3 closed
CMOS memory clear	JP29	pins 1 & 2 closed
í Green PC power down mode enabled	JP30	Open
Green PC power down mode disabled	JP30	Closed
í Turbo disabled	JP33	Closed
Turbo enabled	JP33	Open
í VESA card type select standard VESA VGA	JP34	pins 2 & 3 closed
VESA card type select Tekram VESA/Cache IDE	JP34	pins 1 & 2 closed

Note: The location of JP16 is unidentified.

DRAM CONFIGURATION		
Size	Bank 0	Bank 1
1MB	(1) 256K x 36	NONE
2MB	(1) 256K x 36	(1) 256K x 36
4MB	(1) 1M x 36	NONE
16MB	(1) 4M x 36	NONE
32MB	(1) 8M x 36	NONE
64MB	(1) 16M x 36	NONE

DRAM JUMPER CONFIGURATION	
Type	JP42
Only Bank 0 used	pins 1 & 2 closed
Bank 0 & Bank 1 used	pins 2 & 3 closed

CACHE CONFIGURATION			
Size	Bank 0	Bank 1	TAG
64KB	(4) 8K x 8	(4) 8K x 8	(1) 8K x 8
128KB	(4) 32K x 8	NONE	(1) 8K x 8
256KB	(4) 32K x 8	(4) 32K x 8	(1) 32K x 8

Continued on next page ...

# VISION TECHNOLOGIES

## VAES3486

... continued from previous page

CACHE JUMPER CONFIGURATION				
Size	JP3	JP18	JP19	JP20
64KB	pins 2 & 3 closed	Closed	Closed	pins 2 & 3 closed
128KB	pins 1 & 2 closed	Open	Closed	pins 1 & 2 closed
256KB	pins 2 & 3 closed	Closed	Closed	pins 2 & 3 closed

CPU TYPE CONFIGURATION									
Type	JP17	JP21	JP23	JP25	JP26	JP27	JP31	JP32	JP36
80386DX(PGA)	Open	2 & 3	Open	1 & 2	Open	Open	Closed	Open	Open
CX486DLC	Open	2 & 3	Open	1 & 2	Open	Open	Closed	Open	Open
80386DX(PQFP)	Open	2 & 3	Open	1 & 2	Open	Open	Open	Open	Open
CX486S	1 & 2	2 & 3	Closed	2 & 3	Open	Open	Closed	Closed	1 & 2
Cx487S	1 & 2	2 & 3	Closed	2 & 3	Closed	Open	Closed	Closed	1 & 2
80486SX(PQFP)	2 & 3	2 & 3	Open	1 & 2	Open	Open	Open	Open	Open
80486SX(PGA)	1 & 2	2 & 3	Open	1 & 2	Open	Open	Closed	Closed	2 & 3
80486DX	1 & 2	2 & 3	Open	1 & 2	Open	Open	Closed	Closed	1 & 2
80486DX-50(only)	1 & 2	2 & 3	Open	2 & 3	Open	Open	Closed	Closed	1 & 2
80486DX2	1 & 2	2 & 3	Open	1 & 2	Open	Open	Closed	Closed	1 & 2
P24T (WB)	1 & 2	1 & 2	Closed	2 & 3	Open	Open	Closed	Closed	1 & 2
P24T (WT)	1 & 2	1 & 2	Closed	2 & 3	Open	Closed	Closed	Closed	1 & 2

Note: Pins designated should be in the closed position (The location of JP25 and JP26 is unidentified).

CPU TYPE CONFIGURATION			
Type	JP5	JP22	JP35
80386/CX486DLC	Open	pins 2 & 3 closed	pins 1 & 2 closed
80486/P24T/CX486S	Closed	pins 1 & 2 closed	pins 2 & 3 closed

CPU SPEED CONFIGURATION			
Speed	JP39	JP40	JP41
16MHz	Open	Closed	Open
20MHz	Open	Closed	Closed
25MHz	Closed	Open	Open
33MHz	Closed	Open	Closed
40MHz	Closed	Closed	Open
50iMHz	Closed	Open	Open
50MHz	Closed	Closed	Closed
66iMHz	Closed	Open	Closed

DMA CHANNEL INTERRUPT CONFIGURATION									
DRQ	DACK	JP6	JP7	JP8	JP9	JP10	JP11	JP12	JP13
DRQ3	DACK3	Closed	Open	Open	Open	Closed	Open	Open	Open
DRQ5	DACK5	Open	Closed	Open	Open	Open	Closed	Open	Open
DRQ6	DACK6	Open	Open	Closed	Open	Open	Open	Closed	Open
DRQ7	DACK7	Open	Open	Open	Closed	Open	Open	Open	Closed

Continued on next page . . .

## VISION TECHNOLOGIES

### VAES3486

... continued from previous page

VESA WAIT STATE CONFIGURATION	
Wait states	JP37
0 wait states	Open
1 wait state	Closed