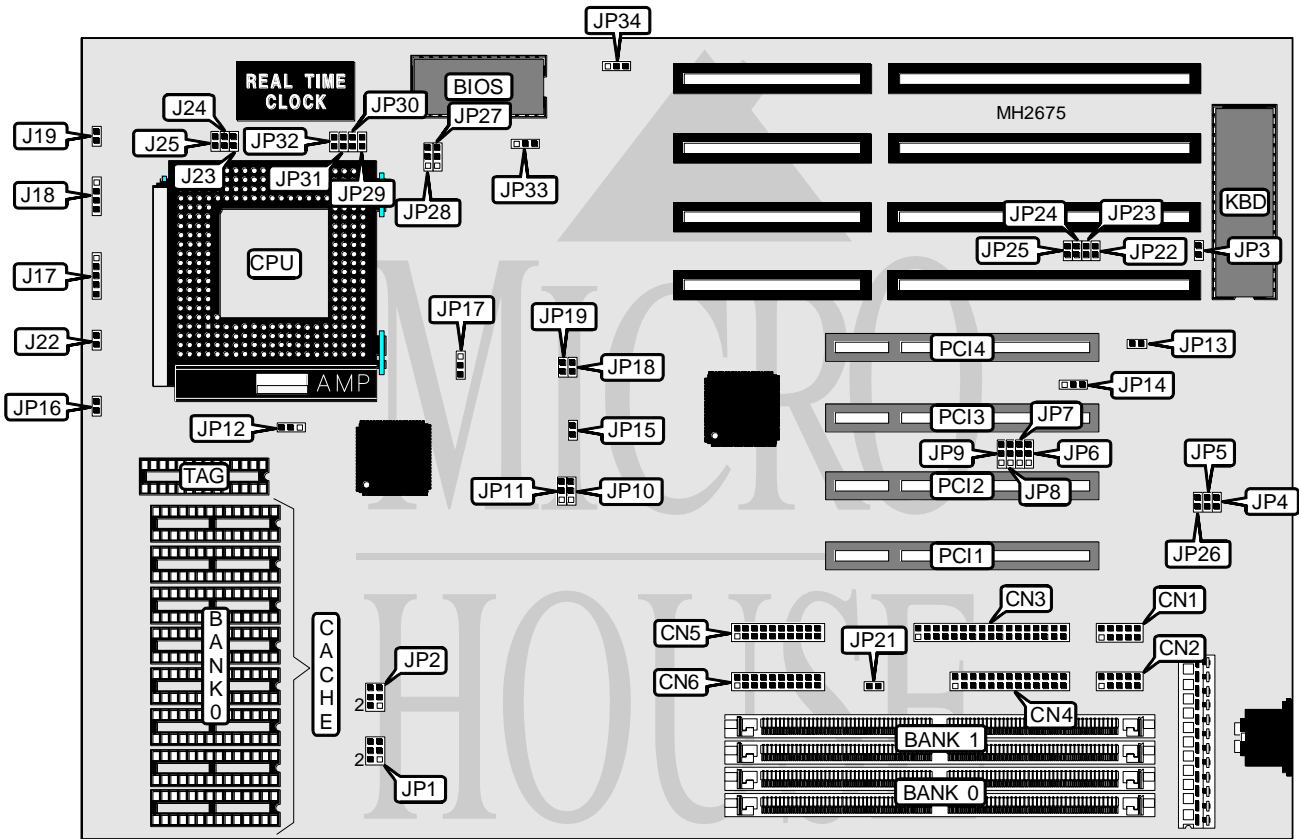


# SOYO TECHNOLOGY COMPANY, INC.

## SY-05TA2/A5

<b>Processor</b>	Pentium
<b>Processor Speed</b>	75/90/100/120/133/150MHz
<b>Chip Set</b>	Unidentified
<b>Max. Onboard DRAM</b>	128MB
<b>Cache</b>	256/512KB
<b>BIOS</b>	Award
<b>Dimensions</b>	330mm x 218mm
<b>I/O Options</b>	32-bit PCI slots (4), floppy drive interface, IDE interface, parallel port, serial ports (2)
<b>NPU Options</b>	None



CONNECTIONS			
Purpose	Location	Purpose	Location
Serial port 1	CN1	Speaker	J18
Serial port 2	CN2	Reset switch	J19
Floppy drive interface	CN3	Turbo switch	J21
Parallel port	CN4	Turbo LED	J22
IDE interface (secondary)	CN5	IDE interface LED	JP16
IDE interface (primary)	CN6	32-bit PCI slots	PCI1 - PCI4
Power LED & keylock	J17		

Note: The location of J21 is unidentified.

Continued on next page. . .

**SOYO TECHNOLOGY COMPANY, INC.**  
**SY-05TA2/A5**

... continued from previous page

USER CONFIGURABLE SETTINGS		
Function	Jumper	Position
í Factory configured - do not alter	J3	N/A
í Monitor type select color	JP3	Closed
Monitor type select monochrome	JP3	Open
í Factory configured - do not alter	JP13	Closed
í Factory configured - do not alter	JP14	pins 1 & 2 closed
í Factory configured - do not alter	JP15	N/A
í Factory configured - do not alter	JP21	N/A
í Factory configured - do not alter	JP22	Open
í Pipeline mode disabled	JP30	Open
Pipeline mode enabled	JP30	Closed
í CPU cache type select write back	JP31	Open
CPU cache type select write through	JP31	Closed
í CMOS memory normal operation	JP32	Open
CMOS memory clear	JP32	Closed

Note: The location of J3 is unidentified.

DRAM CONFIGURATION		
Size	Bank 0	Bank 1
4MB	(2) 256K x 36	(2) 256K x 36
4MB	(2) 512K x 36	NONE
6MB	(2) 256K x 36	(2) 512K x 36
6MB	(2) 512K x 36	(2) 256K x 36
8MB	(2) 512K x 36	(2) 512K x 36
8MB	(2) 1M x 36	NONE
10MB	(2) 256K x 36	(2) 1M x 36
10MB	(2) 1M x 36	(2) 256K x 36
12MB	(2) 512K x 36	(2) 1M x 36
12MB	(2) 1M x 36	(2) 512K x 36
16MB	(2) 1M x 36	(2) 1M x 36
16MB	(2) 2M x 36	NONE
18MB	(2) 256K x 36	(2) 2M x 36
18MB	(2) 2M x 36	(2) 256K x 36
20MB	(2) 512K x 36	(2) 2M x 36
20MB	(2) 2M x 36	(2) 512K x 36
24MB	(2) 1M x 36	(2) 2M x 36
24MB	(2) 2M x 36	(2) 1M x 36
32MB	(2) 2M x 36	(2) 2M x 36
32MB	(2) 4M x 36	NONE
34MB	(2) 256K x 36	(2) 4M x 36
34MB	(2) 4M x 36	(2) 256K x 36
36MB	(2) 512K x 36	(2) 4M x 36
36MB	(2) 4M x 36	(2) 512K x 36
40MB	(2) 1M x 36	(2) 4M x 36
40MB	(2) 4M x 36	(2) 1M x 36
48MB	(2) 2M x 36	(2) 4M x 36

Continued on next page. ...

## SOYO TECHNOLOGY COMPANY, INC.

## SY-05TA2/A5

... continued from previous page

DRAM CONFIGURATION (CON'T)		
Size	Bank 0	Bank 1
48MB	(2) 4M x 36	(2) 2M x 36
64MB	(2) 4M x 36	(2) 4M x 36
64MB	(2) 8M x 36	NONE
66MB	(2) 256K x 36	(2) 8M x 36
66MB	(2) 8M x 36	(2) 256K x 36
68MB	(2) 512K x 36	(2) 8M x 36
68MB	(2) 8M x 36	(2) 512K x 36
72MB	(2) 1M x 36	(2) 8M x 36
72MB	(2) 8M x 36	(2) 1M x 36
80MB	(2) 2M x 36	(2) 8M x 36
80MB	(2) 8M x 36	(2) 2M x 36
96MB	(2) 4M x 36	(2) 8M x 36
96MB	(2) 8M x 36	(2) 4M x 36
128MB	(2) 8M x 36	(2) 8M x 36
128MB	(2) 16M x 36	NONE

CACHE CONFIGURATION		
Size	Bank 0	TAG
256KB	(8) 32K x 8	(1) 8K x 8
512KB	(8) 64K x 8	(1) 16K x 8

CACHE JUMPER CONFIGURATION			
Size	JP12	JP27	JP28
256KB	pins 1 & 2 closed	pins 1 & 2 closed	pins 1 & 2 closed
512KB	pins 2 & 3 closed	pins 2 & 3 closed	pins 2 & 3 closed

CACHE VOLTAGE CONFIGURATION		
Voltage	JP1	JP2
3.33v	Open	Closed
Mixed SRAM	Closed	Open

CPU SPEED CONFIGURATION		
Speed	JP18	JP19
75MHz	Open	Open
90MHz	Open	Open
90MHz	Closed	Open
100MHz	Open	Open
100MHz	Closed	Closed
120MHz	Closed	Open
133Mhz	Closed	Closed
150MHz	Closed	Open

Continued on next page. . .

**SOYO TECHNOLOGY COMPANY, INC.**  
**SY-05TA2/A5**

... continued from previous page

CPU SPEED CONFIGURATION	
Speed	JP17
75MHz	pins 1 & 2 closed
125MHz	pins 1 & 2 closed
Other Pentium CPU's	pins 2 & 3 closed

CPU BUS RATIO CONFIGURATION	
Ratio	JP29
2/1	Closed
3/2	Open
5/2	Open

CPU VOLTAGE CONFIGURATION			
Voltage	J23	J24	J25
3.33v	Open	Open	Closed
3.45 - 3.6v	Closed	Open	Open

HDD CONFIGURATION		
Mode	JP10	JP11
PIO	pins 2 & 3 closed	pins 2 & 3 closed
DMA	pins 1 & 2 closed	pins 1 & 2 closed

DMA/DRQ CONFIGURATION						
Select	JP4	JP5	JP23	JP24	JP25	JP26
None	Open	Open	Open	Open	Open	Open
DRQ0/DACK0	Open	Open	Open	Open	Closed	Closed
DRQ3/DACK3	Closed	Open	Closed	Open	Open	Open
DRQ7/DACK7	Open	Closed	Open	Closed	Open	Open

PCI/IRQ CONFIGURATION				
Select	JP6	JP7	JP8	JP9
IRQ10/INTA	Open	Open	Open	pins 1 & 2 closed
IRQ10/INTB	Open	Open	Open	pins 2 & 3 closed
IRQ10/INTC	pins 1 & 2 closed	Open	Open	Open
IRQ10/INTD	pins 2 & 3 closed	Open	Open	Open
IRQ11/INTA	Open	Open	pins 1 & 2 closed	Open
IRQ11/INTB	Open	Open	pins 2 & 3 closed	Open
IRQ11/INTC	Open	pins 1 & 2 closed	Open	Open
IRQ11/INTD	Open	pins 2 & 3 closed	Open	Open

BIOS CONFIGURATION		
Type	JP33	JP34
EPROM	pins 1 & 2 closed	pins 2 & 3 closed
FLASH	pins 2 & 3 closed	pins 1 & 2 closed