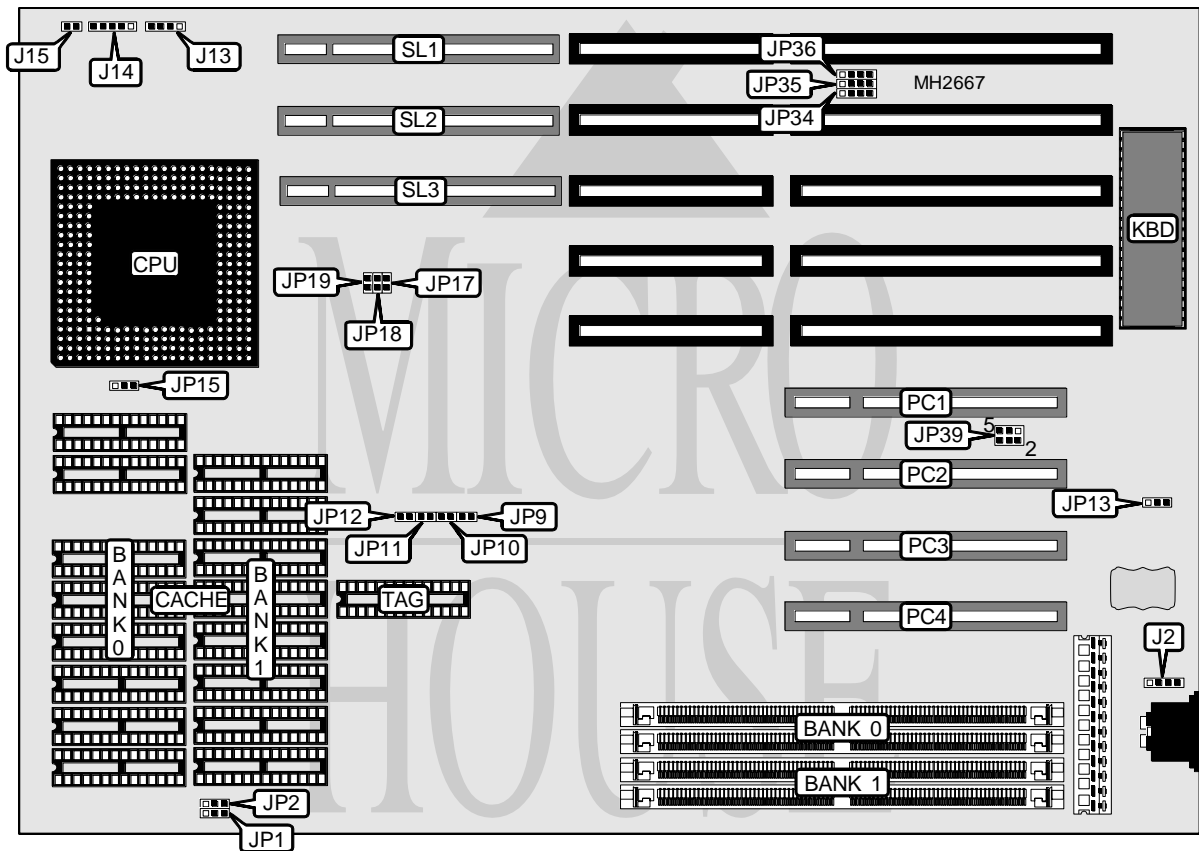


EDOM INTERNATIONAL CORPORATION

586 PCI (MP033)

Processor	Pentium
Processor Speed	60/66MHz
Chip Set	OPTI
Max. Onboard DRAM	128MB
Cache	128/256/512/1024KB
BIOS	Award
Dimensions	330mm x 218mm
I/O Options	32-bit VESA local bus slots (3), 32-bit PCI slots (4)
NPU Options	None



CONNECTIONS			
Purpose	Location	Purpose	Location
External battery	J2	Reset switch	J15
Speaker	J13	32-bit PCI slots	PC1 - PC4
Power LED & keylock	J14	32-bit VESA local bus slots	SL1 - SL3

Continued on next page...

EDOM INTERNATIONAL CORPORATION

586 PCI (MP033)

... continued from previous page

USER CONFIGURABLE SETTINGS		
Function	Jumper	Position
í CMOS memory normal operation	JP13	pins 2 & 3 closed
CMOS memory clear	JP13	pins 1 & 2 closed

DRAM CONFIGURATION		
Size	Bank 0	Bank 1
2MB	(2) 256K x 36	NONE
4MB	(2) 512K x 36	NONE
4MB	(2) 256K x 36	(2) 256K x 36
8MB	(2) 1M x 36	NONE
8MB	(2) 512K x 36	(2) 512K x 36
16MB	(2) 2M x 36	NONE
16MB	(2) 1M x 36	(2) 1M x 36
32MB	(2) 4M x 36	NONE
32MB	(2) 2M x 36	(2) 2M x 36
64MB	(2) 8M x 36	NONE
64MB	(2) 4M x 36	(2) 4M x 36
128MB	(2) 8M x 36	(2) 8M x 36

CACHE CONFIGURATION			
Size	Bank 0	Bank 1	TAG
128KB	(8) 8K x 8	(8) 8K x 8	(1) 8K x 8
256KB	(8) 32K x 8	NONE	(1) 8K x 8
512KB	(8) 32K x 8	(8) 32K x 8	(1) 32K x 8
512KB	(8) 64K x 8	NONE	(1) 32K x 8
1MB	(8) 64K x 8	(8) 64K x 8	(1) 32K x 8

CACHE JUMPER CONFIGURATION							
Size	JP1	JP2	JP9	JP10	JP11	JP12	JP15
128KB	2 & 3	2 & 3	Closed	Open	Open	Open	2 & 3
256KB	1 & 2	1 & 2	Closed	Closed	Open	Open	1 & 2
512KB	2 & 3	2 & 3	Closed	Closed	Closed	Open	2 & 3
512KB	1 & 2	1 & 2	Closed	Closed	Closed	Open	1 & 2
1MB	1 & 2	1 & 2	Closed	Closed	Closed	Closed	1 & 2

Note: Pins designated should be in the closed position.

CPU SPEED CONFIGURATION (MX8315)			
Speed	JP17	JP18	JP19
60MHz	Closed	Open	Closed
66MHz	Open	Closed	Open

CPU SPEED CONFIGURATION (IMI468)			
Speed	JP17	JP18	JP19
60MHz	Closed	Closed	Closed
66MHz	Closed	Open	Closed

Continued on next page...

EDOM INTERNATIONAL CORPORATION

586 PCI (MP033)

... continued from previous page

PCI IRQ CONFIGURATION	
Setting	JP36
IRQ11	pins 2 & 3 closed
IRQ11 (old version of PCI card)	pins 1 & 2, 3 & 4 closed

PCI IRQ CONFIGURATION	
Setting	JP35
IRQ12	pins 2 & 3 closed
IRQ12 (old version of PCI card)	pins 1 & 2, 3 & 4 closed

PCI IRQ CONFIGURATION	
Setting	JP34
IRQ15	pins 2 & 3 closed
IRQ15 (old version of PCI card)	pins 1 & 2, 3 & 4 closed

PCI IRQ CONFIGURATION (PCI SLOT 2 ONLY)	
Setting	JP39
INTA#2	pins 1 & 2 closed
IRQ14 (edge trigger)	pins 3 & 4 closed
IRQ15 (edge trigger)	pins 5 & 6 closed