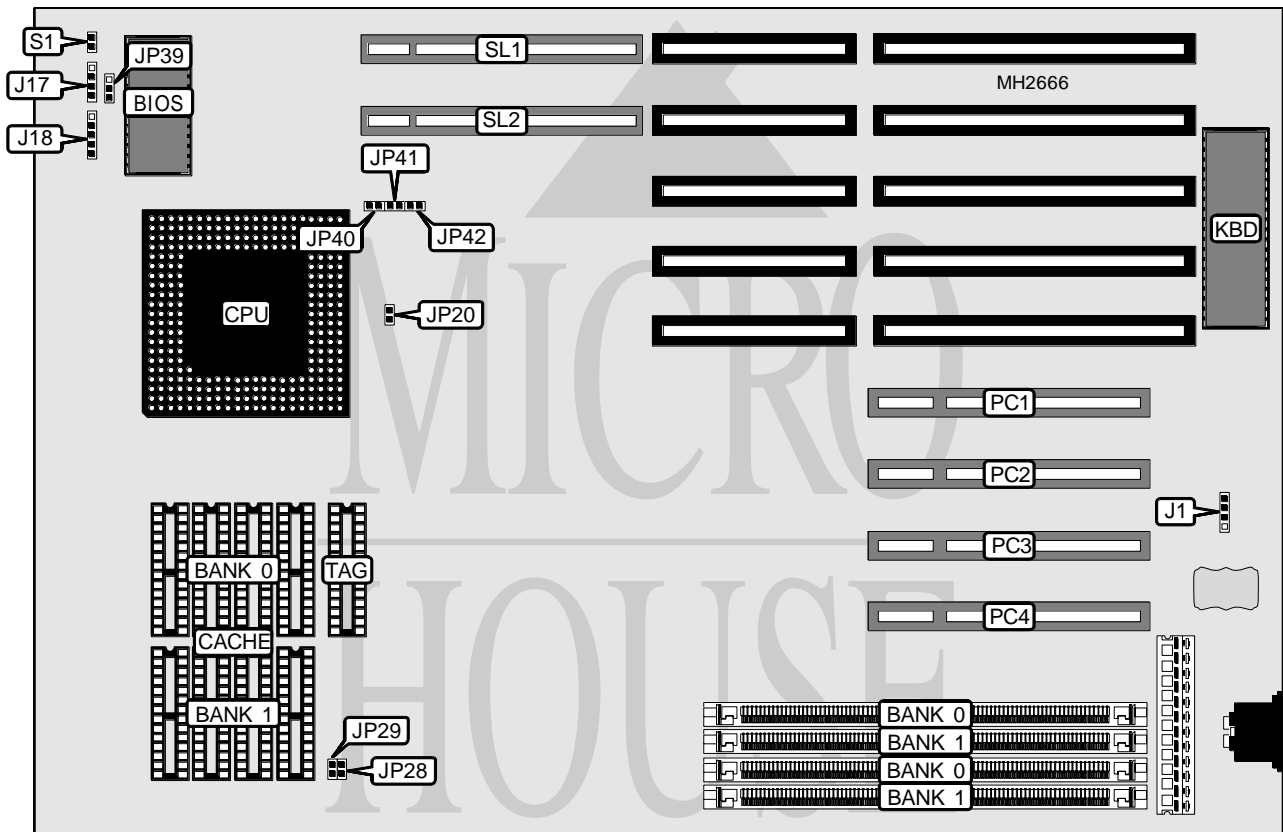


EDOM INTERNATIONAL CORPORATION

586VIP (MP039)

Processor	Pentium
Processor Speed	90/100MHz
Chip Set	OPTI
Max. Onboard DRAM	128MB
Cache	256/512/1024KB
BIOS	Award
Dimensions	330mm x 218mm
I/O Options	32-bit VESA local bus slots (2), 32-bit PCI slots (4)
NPU Options	None



CONNECTIONS				
Purpose	Location	Purpose	Location	
External battery	J1	32-bit PCI slots	PC1 - PC4	
Speaker	J17	Reset switch	S1	
Power LED & keylock	J18	32-bit VESA local bus slots	SL1 & SL2	

Continued on next page. . .

EDOM INTERNATIONAL CORPORATION

586VIP (MP039)

... continued from previous page

USER CONFIGURABLE SETTINGS		
Function	Jumper	Position
í Memory type select 128MB on board	JP27	pins 1 & 2 closed
Memory type select mapped I/O at top of memory	JP27	pins 2 & 3 closed
í Flash BIOS voltage select 12v	JP39	pins 2 & 3 closed
Flash BIOS voltage select 5v	JP39	pins 1 & 2 closed
Note: The location of JP27 is unidentified.		

DRAM CONFIGURATION		
Size	Bank 0	Bank 1
2MB	(2) 256K x 36	NONE
4MB	(2) 512K x 36	NONE
4MB	(2) 256K x 36	(2) 256K x 36
8MB	(2) 1M x 36	NONE
8MB	(2) 512K x 36	(2) 512K x 36
16MB	(2) 2M x 36	NONE
16MB	(2) 1M x 36	(2) 1M x 36
32MB	(2) 4M x 36	NONE
32MB	(2) 2M x 36	(2) 2M x 36
64MB	(2) 8M x 36	NONE
64MB	(2) 4M x 36	(2) 4M x 36
128MB	(2) 8M x 36	(2) 8M x 36

CACHE CONFIGURATION			
Size	Bank 0	Bank 1	TAG
256KB	(4) 32K x 8	(4) 32K x 8	(1) 8K x 8
512KB	(4) 64K x 8	(4) 64K x 8	(1) 32K x 8
1MB	(4) 128K x 8	(4) 128K x 8	(1) 32K x 8

CACHE JUMPER CONFIGURATION		
Size	JP28	JP29
256KB	Open	Open
512KB	Open	Closed
1MB	Closed	Closed

CPU SPEED CONFIGURATION				
Speed	JP20	JP40	JP41	JP42
90MHz	Open	Open	Closed	Open
100MHz	Closed	Closed	Open	Closed