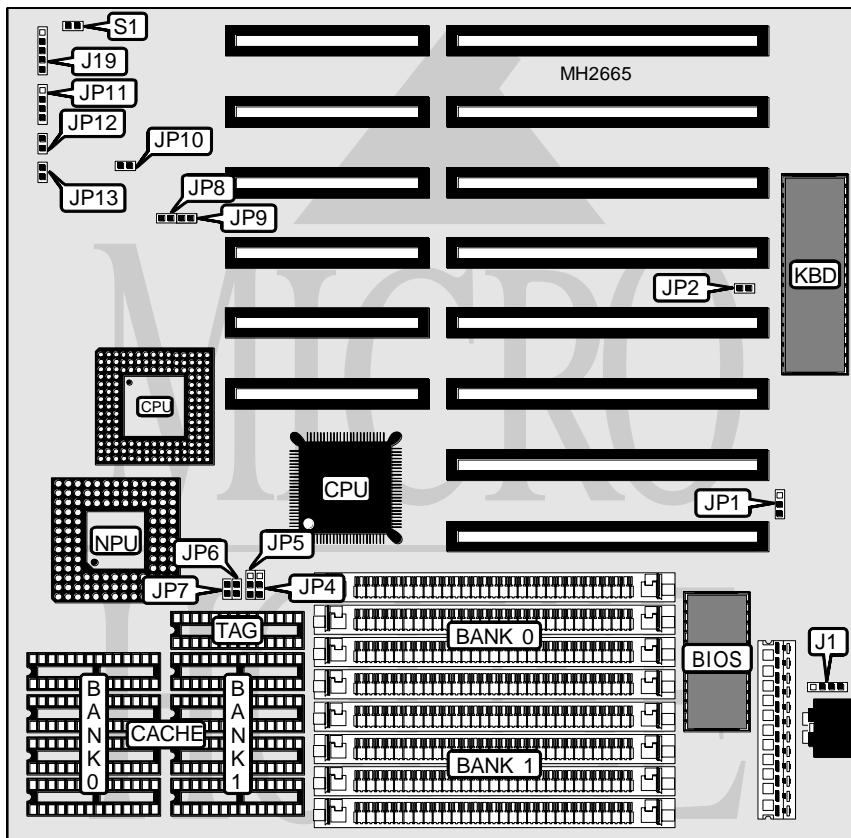


EDOM INTERNATIONAL CORPORATION

386DX (MA014)

Processor 80386DX
Processor Speed 33/40MHz
Chip Set Unidentified
Max. Onboard DRAM 32MB
Cache 64/128/256KB
BIOS AMI
Dimensions 220mm x 220mm
I/O Options None
NPU Options 80387DX/3167



CONNECTIONS			
Purpose	Location	Purpose	Location
External battery	J1	Turbo switch	JP12
Power LED & keylock	J19	Turbo LED	JP13
Speaker	JP11	Reset switch	S1

Continued on next page. . .

EDOM INTERNATIONAL CORPORATION

386DX (MA014)

... continued from previous page

USER CONFIGURABLE SETTINGS		
Function	Jumper	Position
í CMOS memory normal operation	JP1	pins 2 & 3 closed
CMOS memory clear	JP1	pins 1 & 2 closed
í Monitor type select monochrome	JP2	Open
Monitor type select color	JP2	Closed
í PQFP CPU disabled	JP10	Closed
PQFP CPU enabled	JP10	Open

DRAM CONFIGURATION		
Size	Bank 0	Bank 1
1MB	(4) 256K x 9	NONE
2MB	(4) 256K x 9	(4) 256K x 9
4MB	(4) 1M x 9	NONE
8MB	(4) 1M x 9	(4) 1M x 9
16MB	(4) 4M x 9	NONE
32MB	(4) 4M x 9	(4) 4M x 9

CACHE CONFIGURATION			
Size	Bank 0	Bank 1	TAG
64KB	(4) 8K x 8	(4) 8K x 8	(1) 8K x 8
128KB	(4) 32K x 8	NONE	(1) 8K x 8
256KB	(4) 32K x 8	(4) 32K x 8	(1) 32K x 8

CACHE JUMPER CONFIGURATION				
Size	JP4	JP5	JP6	JP7
64KB	pins 2 & 3 closed	pins 2 & 3 closed	Open	Open
128KB	pins 1 & 2 closed	pins 1 & 2 closed	Closed	Open
256KB	pins 2 & 3 closed	pins 2 & 3 closed	Closed	Closed

CPU CLOCK SPEED CONFIGURATION		
Speed	JP8	JP9
50MHz	Closed	Open
66MHz	Open	Closed
80MHz	Open	Open