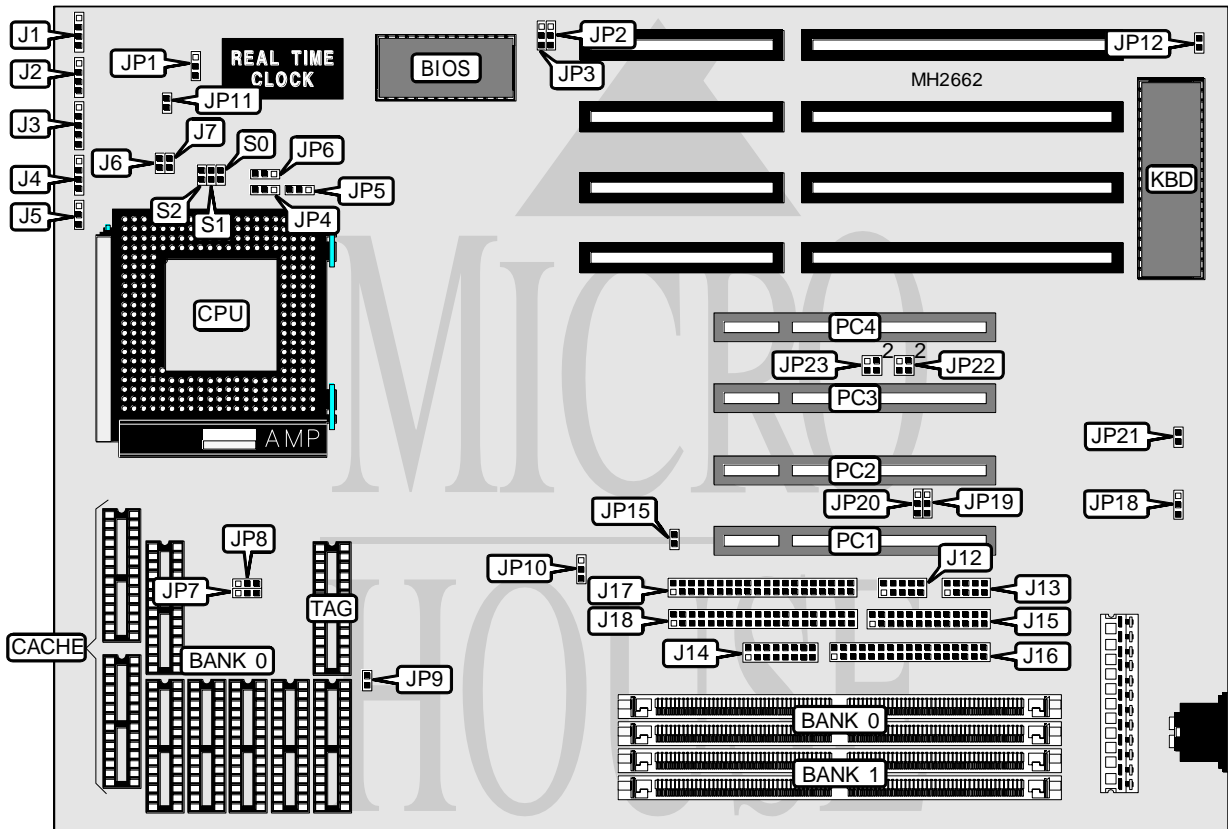


# DTK COMPUTER, INC.

## PAM-0035S/QUIN-35

<b>Processor</b>	Pentium
<b>Processor Speed</b>	90/100MHz
<b>Chip Set</b>	SIS
<b>Max. Onboard DRAM</b>	128MB
<b>Cache</b>	256/512/1024KB
<b>BIOS</b>	Award
<b>Dimensions</b>	330mm x 218mm
<b>I/O Options</b>	32-bit PCI slots (4) floppy drive interface, game port, green PC connector, IDE interfaces (2), parallel port, serial ports (2)
<b>NPU Options</b>	None



CONNECTIONS			
Purpose	Location	Purpose	Location
Chassis fan power	J1	Serial port 2	J13
IDE interface LED	J2	Game port	J14
Power LED & keylock	J3	Parallel port	J15
Speaker	J4	Floppy drive interface	J16
Turbo switch	J5	IDE interface (secondary)	J17
Turbo LED	J6	IDE interface (primary)	J18
Reset switch	J7	Green PC connector	JP11
Serial port 1	J12	32-bit PCI slots	PC1 - PC4

Continued on next page. . .

**DTK COMPUTER, INC.**  
**PAM-0035S/QUIN-35**

... continued from previous page

USER CONFIGURABLE SETTINGS		
Function	Jumper	Position
í CMOS memory normal operation	JP1	pins 1 & 2 closed
CMOS memory clear	JP1	pins 2 & 3 closed
í Cache invalidation select invalid during write cycle	JP4	pins 2 & 3 closed
Cache invalidation select always invalid	JP4	pins 1 & 2 closed
í Pipeline mode disabled	JP5	pins 1 & 2 closed
Pipeline mode enabled	JP5	pins 2 & 3 closed
í Cache type select write back	JP6	pins 1 & 2 closed
Cache type select write through	JP6	pins 2 & 3 closed
í Monitor type select color	JP12	Closed
Monitor type select monochrome	JP12	Open
í PCI IDE interface enabled	JP15	Open
PCI IDE interface disabled	JP15	Closed
í Parallel port IRQ select IRQ7	JP18	pins 1 & 2 closed
Parallel port IRQ select IRQ5	JP18	pins 2 & 3 closed
í Game port enabled	JP21	Closed
Game port disabled	JP21	Open

DRAM CONFIGURATION		
Size	Bank 0	Bank 1
2MB	(2) 256K x 36	NONE
4MB	(2) 512K x 36	NONE
4MB	(2) 256K x 36	(2) 256K x 36
6MB	(2) 512K x 36	(2) 256K x 36
8MB	(2) 1M x 36	NONE
8MB	(2) 512K x 36	(2) 512K x 36
10MB	(2) 256K x 36	(2) 1M x 36
12MB	(2) 512K x 36	(2) 1M x 36
16MB	(2) 2M x 36	NONE
16MB	(2) 1M x 36	(2) 1M x 36
18MB	(2) 2M x 36	(2) 256K x 36
20MB	(2) 512K x 36	(2) 2M x 36
24MB	(2) 2M x 36	(2) 1M x 36
32MB	(2) 4M x 36	NONE
32MB	(2) 2M x 36	(2) 2M x 36
34MB	(2) 256K x 36	(2) 4M x 36
36MB	(2) 512K x 36	(2) 4M x 36
40MB	(2) 1M x 36	(2) 4M x 36
48MB	(2) 2M x 36	(2) 4M x 36
64MB	(2) 8M x 36	NONE
64MB	(2) 4M x 36	(2) 4M x 36
66MB	(2) 8M x 36	(2) 256K x 36
68MB	(2) 512K x 36	(2) 8M x 36

Continued on next page...

DTK COMPUTER, INC.  
PAM-0035S/QUIN-35

... continued from previous page

DRAM CONFIGURATION (CON'T)		
Size	Bank 0	Bank 1
72MB	(2) 8M x 36	(2) 1M x 36
80MB	(2) 2M x 36	(2) 8M x 36
96MB	(2) 4M x 36	(2) 8M x 36
128MB	(2) 8M x 36	(2) 8M x 36

DRAM JUMPER CONFIGURATION	
Size	JP10
2MB	pins 1 & 2 closed
4MB	pins 2 & 3 closed
4MB	pins 1 & 2 closed
6MB	pins 2 & 3 closed
8MB	pins 1 & 2 closed
8MB	pins 2 & 3 closed
10MB	pins 1 & 2 closed
12MB	pins 2 & 3 closed
16MB	pins 2 & 3 closed
16MB	pins 1 & 2 closed
18MB	pins 2 & 3 closed
20MB	pins 2 & 3 closed
24MB	pins 2 & 3 closed
32MB	pins 1 & 2 closed
32MB	pins 2 & 3 closed
34MB	pins 1 & 2 closed
36MB	pins 2 & 3 closed
40MB	pins 1 & 2 closed
48MB	pins 2 & 3 closed
64MB	pins 2 & 3 closed
64MB	pins 1 & 2 closed
66MB	pins 2 & 3 closed
68MB	pins 2 & 3 closed
72MB	pins 2 & 3 closed
80MB	pins 2 & 3 closed
96MB	pins 2 & 3 closed
128MB	pins 2 & 3 closed

CACHE CONFIGURATION		
Size	Bank 0	TAG
256KB	(8) 32K x 8	(1) 8K x 8
512KB	(8) 64K x 8	(1) 32K x 8
1MB	(8) 128K x 8	(1) 32K x 8

Continued on next page...

# DTK COMPUTER, INC.

## PAM-0035S/QUIN-35

... continued from previous page

CACHE JUMPER CONFIGURATION			
Size	JP7	JP8	JP9
256KB	pins 1 & 2 closed	pins 1 & 2 closed	Closed
512KB	pins 2 & 3 closed	pins 1 & 2 closed	Open
1MB	pins 2 & 3 closed	pins 2 & 3 closed	Closed

CPU SPEED CONFIGURATION			
Speed	S0	S1	S2
90MHz	Open	Closed	Open
100MHz	Closed	Open	Closed

BIOS CONFIGURATION		
Type	JP2	JP3
EPROM	pins 2 & 3 closed	pins 2 & 3 closed
Flash BIOS	pins 1 & 2 closed	pins 1 & 2 closed

PARALLEL PORT CONFIGURATION				
Setting	JP19	JP20	JP22	JP23
Printer	pins 1 & 2 closed	pins 1 & 2 closed	Open	Open
EPP/ECP	pins 1 & 2 closed	pins 2 & 3 closed	pins 1 & 3 closed	pins 1 & 3 closed
SPP/EPP	pins 2 & 3 closed	pins 1 & 2 closed	Open	Open
EXT2FDD	pins 2 & 3 closed	pins 2 & 3 closed	Open	Open