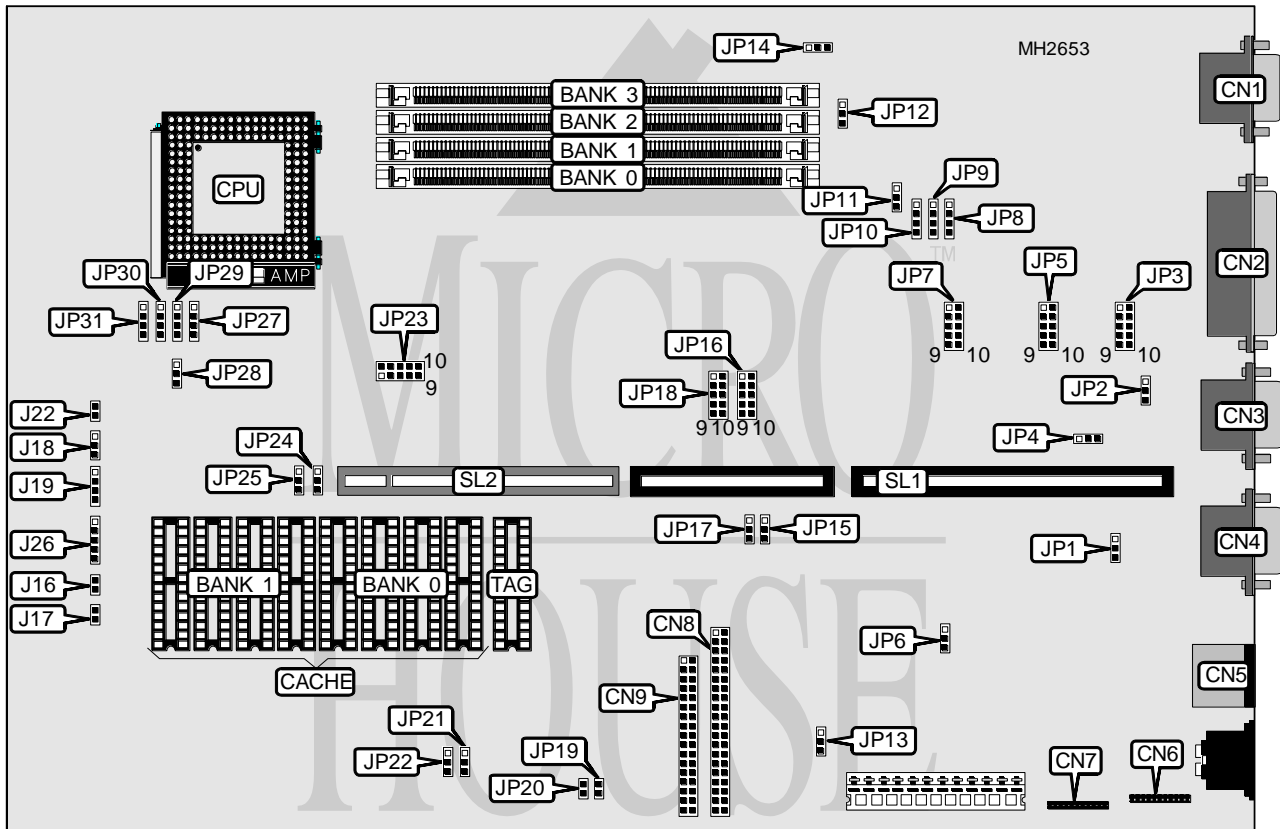


AMERICAN PREDATOR CORPORATION PREDATOR LPX

Processor	80486SX/80487SX/80486DX/80486DX2/80486DX4/Pentium Overdrive
Processor Speed	20/25/33/40/50(internal)/50/66(internal)/75(internal)/83(internal)/ 100(internal)MHz
Chip Set	OPTI
Max. Onboard DRAM	64MB
Cache	128/256KB
BIOS	AMI
Dimensions	330mm x 218mm
I/O Options	32-bit VESA local bus slot, floppy drive interface, IDE interface, parallel port, PS/2 mouse port, serial ports (2), VGA port, ethernet interfaces (2)
NPU Options	None



Continued on next page . .

AMERICAN PREDATOR CORPORATION

PREDATOR LPX

... continued from previous page

CONNECTIONS			
Purpose	Location	Purpose	Location
VGA port	CN1	Reset switch	J16
Parallel port	CN2	IDE interface LED	J17
Serial port 2	CN3	Turbo LED	J18
Serial port 1	CN4	Speaker	J19
PS/2 mouse port	CN5	Ethernet LED	J21
Ethernet TP connector	CN6	5v ground	J22
Ethernet AUI connector	CN7	Power LED & keylock	J26
IDE interface	CN8	Riser Card	SL1
Floppy drive interface	CN9	32-bit VESA local bus slot	SL2

Note: The location of J21 is unidentified.

USER CONFIGURABLE SETTINGS		
Function	Jumper	Position
í Ethernet interface type select twisted pair	JP1	pins 1 & 2 closed
Ethernet interface type select coaxial	JP1	pins 2 & 3 closed
í Mouse IRQ12 enabled	JP2	pins 1 & 2 closed
Mouse IRQ12 disabled	JP2	pins 2 & 3 closed
í Factory configured - do not alter	JP4	N/A
í Boot ROM disabled	JP6	pins 1 & 2 closed
Boot ROM enabled	JP6	pins 2 & 3 closed
í Parallel port IRQ select IRQ7	JP8	pins 1 & 2 closed
Parallel port IRQ select IRQ5	JP8	pins 2 & 3 closed
Parallel port IRQ select disabled	JP8	pins 3 & 4 closed
í Serial port 1 IRQ select IRQ4	JP9	pins 1 & 2 closed
Serial port 1 IRQ select IRQ5	JP9	pins 2 & 3 closed
Serial port 1 IRQ select disabled	JP9	pins 3 & 4 closed
í Serial port 2 IRQ select IRQ3	JP10	pins 1 & 2 closed
Serial port 2 IRQ select IRQ9	JP10	pins 2 & 3 closed
Serial port 2 IRQ select disabled	JP10	pins 3 & 4 closed
í On board VGA enabled	JP11	pins 1 & 2 closed
On board VGA disabled	JP11	pins 2 & 3 closed
í VGA IRQ select IRQ9	JP12	pins 1 & 2 closed
VGA IRQ select disabled	JP12	pins 2 & 3 closed
í On board I/O enabled	JP13	pins 1 & 2 closed
On board I/O disabled	JP13	pins 2 & 3 closed
í CMOS memory normal operation	JP14	pins 1 & 2 closed
CMOS memory clear	JP14	pins 2 & 3 closed
í Factory configured - do not alter	JP16	N/A
í Factory configured - do not alter	JP18	N/A
í IDE interface enabled	JP19	pins 1 & 2 closed
IDE interface disabled	JP19	pins 2 & 3 closed
í IDE timing select normal	JP20	pins 1 & 2 closed
IDE timing select slow	JP20	pins 2 & 3 closed
í Factory configured - do not alter	JP24	N/A

Continued on next page. . .

AMERICAN PREDATOR CORPORATION

PREDATOR LPX

... continued from previous page

USER CONFIGURABLE SETTINGS (CON'T)		
Function	Jumper	Position
í IDE wait state select 0 wait states	JP25	pins 1 & 2 closed
IDE wait state select 1 wait state	JP25	pins 2 & 3 closed
í BIOS type select EPROM	JP28	pins 2 & 3 closed
BIOS type select flash	JP28	pins 1 & 2 closed
í Factory configured - do not alter	JP31	N/A

DRAM CONFIGURATION				
Size	Bank 0	Bank 1	Bank 2	Bank 3
2MB	(1) 512K x 36	NONE	NONE	NONE
4MB	(1) 1M x 36	NONE	NONE	NONE
6MB	(1) 512K x 36	(1) 1M x 36	NONE	NONE
8MB	(1) 1M x 36	(1) 1M x 36	NONE	NONE
8MB	(1) 2M x 36	NONE	NONE	NONE
12MB	(1) 1M x 36	(1) 1M x 36	(1) 1M x 36	NONE
16MB	(1) 1M x 36	(1) 1M x 36	(1) 1M x 36	(1) 1M x 36
16MB	(1) 4M x 36	NONE	NONE	NONE
20MB	(1) 1M x 36	(1) 4M x 36	NONE	NONE
24MB	(1) 1M x 36	(1) 1M x 36	(1) 4M x 36	NONE
28MB	(1) 1M x 36	(1) 1M x 36	(1) 4M x 36	(1) 1M x 36
32MB	(1) 4M x 36	(1) 4M x 36	NONE	NONE
32MB	(1) 8M x 36	NONE	NONE	NONE
36MB	(1) 1M x 36	(1) 4M x 36	(1) 4M x 36	NONE
40MB	(1) 1M x 36	(1) 1M x 36	(1) 4M x 36	(1) 4M x 36
48MB	(1) 4M x 36	(1) 4M x 36	(1) 4M x 36	NONE
52MB	(1) 1M x 36	(1) 4M x 36	(1) 4M x 36	(1) 4M x 36
64MB	(1) 4M x 36	(1) 4M x 36	(1) 4M x 36	(1) 4M x 36

CACHE CONFIGURATION			
Size	Bank 0	Bank 1	TAG
128KB	(4) 32K x 8	NONE	(1) 8K x 8
256KB	(4) 32K x 8	(4) 32K x 8	(1) 32K x 8

CACHE JUMPER CONFIGURATION		
Size	JP21	JP22
128KB	pins 1 & 2 closed	pins 1 & 2 closed
256KB	pins 2 & 3 closed	pins 2 & 3 closed

CPU TYPE CONFIGURATION			
Type	JP27	JP29	JP30
80486SX	pins 3 & 4 closed	pins 3 & 4 closed	pins 3 & 4 closed
80487SX	pins 2 & 3 closed	pins 2 & 3 closed	pins 2 & 3 closed
80486DX	pins 1 & 2 closed	pins 1 & 2 closed	pins 1 & 2 closed
80486DX2	pins 1 & 2 closed	pins 1 & 2 closed	pins 1 & 2 closed
80486DX4	pins 1 & 2 closed	pins 1 & 2 closed	pins 1 & 2 closed
Pentium Overdrive	pins 2 & 3 closed	pins 2 & 3 closed	pins 2 & 3 closed

AMERICAN PREDATOR CORPORATION

PREDATOR LPX

... continued from previous page

CPU SPEED CONFIGURATION	
Speed	JP23
20MHz	pins 1 & 2 closed
25MHz	pins 3 & 4 closed
33MHz	pins 5 & 6 closed
40MHz	pins 7 & 8 closed
50iMHz	pins 3 & 4 closed
50MHz	pins 9 & 10 closed
66iMHz	pins 5 & 6 closed
75iMHz	pins 3 & 4 closed
83iMHz	pins 5 & 6 closed
100iMHz	pins 5 & 6 closed

IDE MODE CONFIGURATION		
Mode	JP15	JP17
0	pins 2 & 3 closed	pins 2 & 3 closed
1	pins 2 & 3 closed	pins 1 & 2 closed
2	pins 1 & 2 closed	pins 2 & 3 closed
3	pins 1 & 2 closed	pins 1 & 2 closed

ETHERNET I/O CONFIGURATION	
I/O address	JP3
300h	pins 3 & 4 closed
320h	pins 5 & 6 closed
340h	pins 7 & 8 closed
360h	pins 9 & 10 closed
Disabled	pins 1 & 2 closed

ETHERNET DMA CONFIGURATION	
DMA	JP5
DMA 3	pins 9 & 10 closed
DMA 5	pins 3 & 4 closed
DMA 6	pins 5 & 6 closed
DMA 7	pins 7 & 8 closed
Disabled	pins 1 & 2 closed

ETHERNET IRQ CONFIGURATION	
IRQ	JP7
IRQ3	pins 3 & 4 closed
IRQ4	pins 5 & 6 closed
IRQ5	pins 7 & 8 closed
IRQ9	pins 9 & 10 closed
Disabled	pins 1 & 2 closed