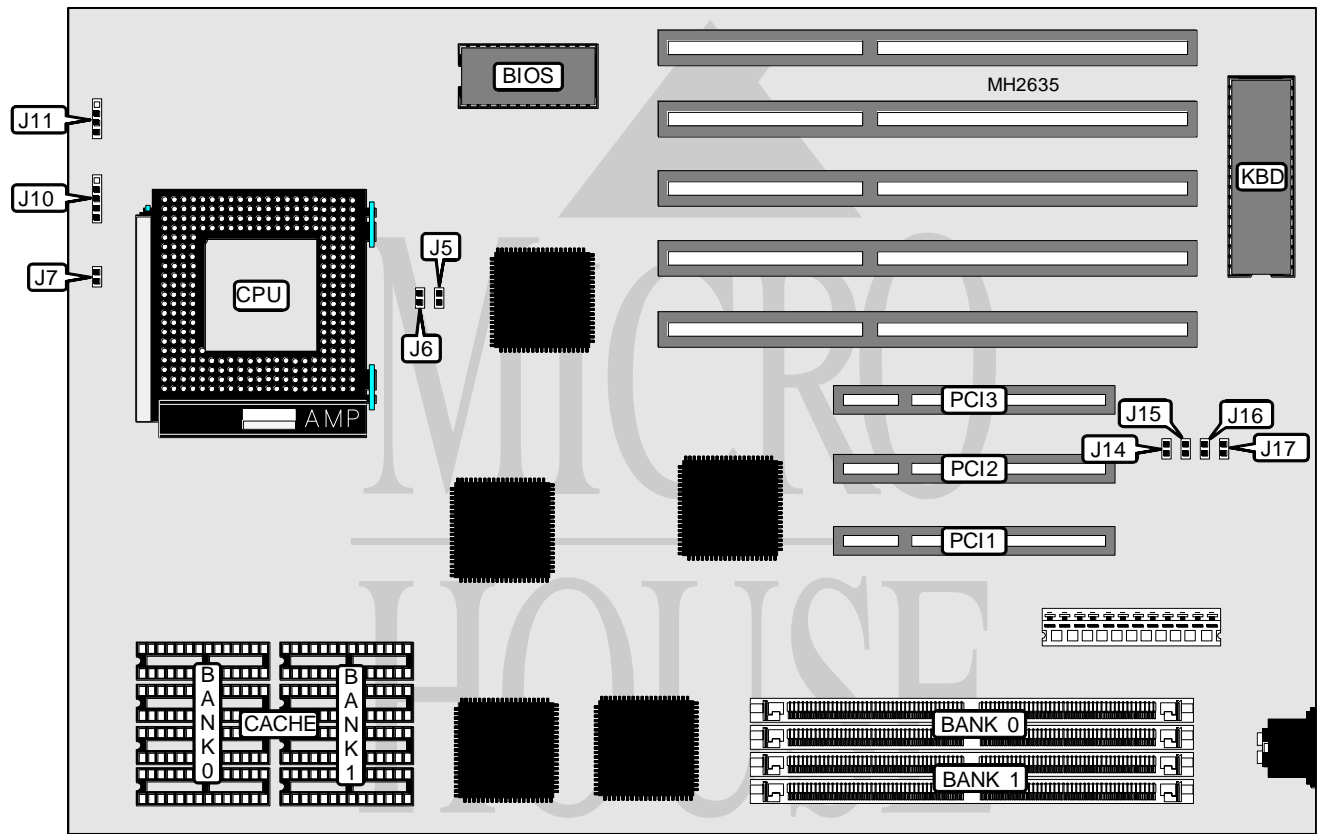


SHUTTLE COMPUTER INTERNATIONAL, INC.

HOT-528

Processor	Pentium
Processor Speed	60/66MHz
Chip Set	OPTI
Max. Onboard DRAM	128MB
Cache	256KB
BIOS	AMI
Dimensions	330mm x 220mm
I/O Options	32-bit PCI slots (3)
NPU Options	None



CONNECTIONS			
Purpose	Location	Purpose	Location
Reset switch	J7	Speaker	J11
Power LED & keylock	J10	32-bit PCI slots	PCI1 - PCI3

Continued on next page. . .

SHUTTLE COMPUTER INTERNATIONAL, INC.

HOT - 5 2 8

... continued from previous page

USER CONFIGURABLE SETTINGS		
Function	Jumper	Position
í Pipeline mode enabled	J5	Closed
Pipeline mode disabled	J5	Open
í CPU cache type select write back	J6	Closed
CPU cache type select write through	J6	Open

DRAM CONFIGURATION		
Size	Bank 0	Bank 1
2MB	(2) 256K x 36	NONE
4MB	(2) 512K x 36	NONE
4MB	(2) 256K x 36	(2) 256K x 36
6MB	(2) 256K x 36	(2) 512K x 36
8MB	(2) 1M x 36	NONE
8MB	(2) 512K x 36	(2) 512K x 36
12MB	(2) 512K x 36	(2) 1M x 36
16MB	(2) 2M x 36	NONE
16MB	(2) 1M x 36	(2) 1M x 36
24MB	(2) 1M x 36	(2) 2M x 36
32MB	(2) 4M x 36	NONE
32MB	(2) 2M x 36	(2) 2M x 36
40MB	(2) 1M x 36	(2) 4M x 36
48MB	(2) 2M x 36	(2) 4M x 36
64MB	(2) 8M x 36	NONE
64MB	(2) 4M x 36	(2) 4M x 36
96MB	(2) 4M x 36	(2) 8M x 36
128MB	(2) 8M x 36	(2) 8M x 36

CACHE CONFIGURATION		
Size	Bank 0	Bank 1
256KB	(8) 32K x 8	(8) 32K x 8

PCI IRQ CONFIGURATION				
Setting	J14	J15	J16	J17
INTA/IRQ9	Closed	Open	Open	Open
INTB/IRQ10	Open	Closed	Open	Open
INTC/IRQ11	Open	Open	Closed	Open
INTD/IRQ12	Open	Open	Open	Closed