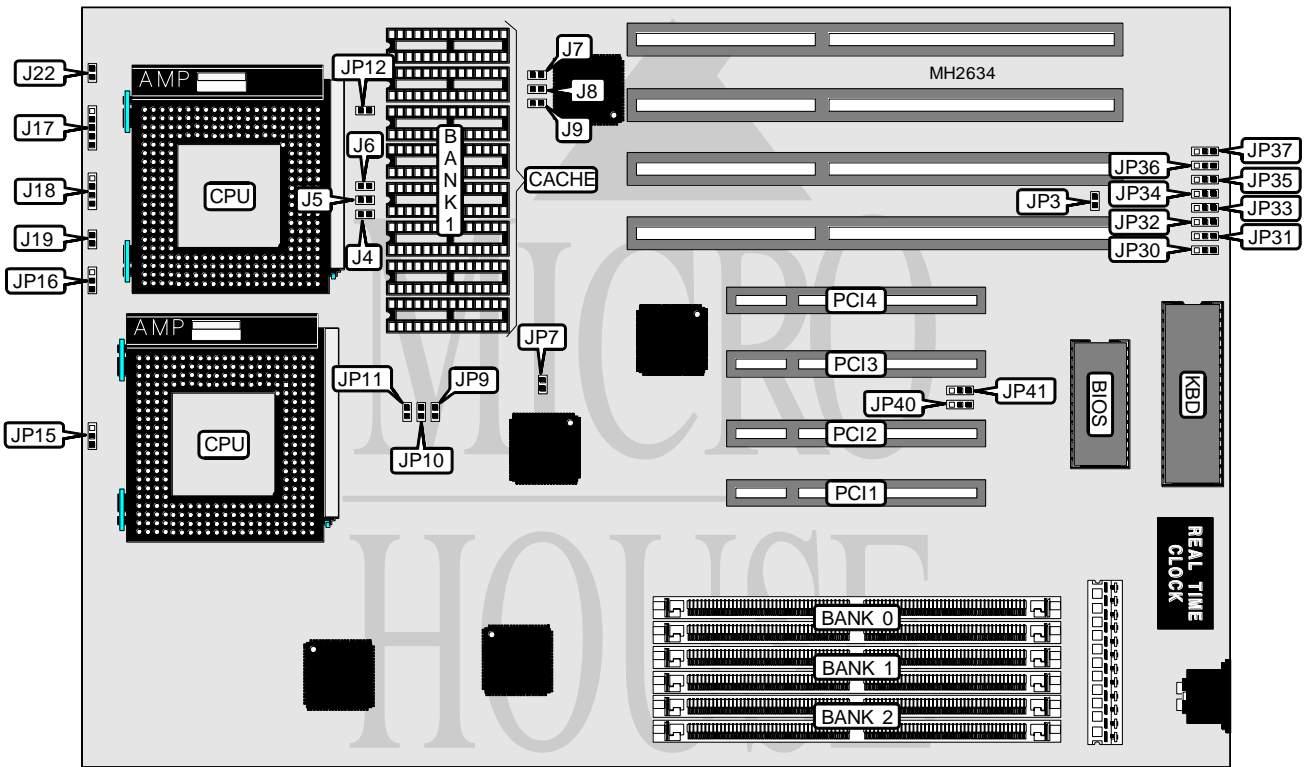


# SOYO TECHNOLOGY COMPANY, LTD. PENTIUM (P54C) EISA PCI MAINBOARD

<b>Processor</b>	Pentium
<b>Processor Speed</b>	90/100MHz
<b>Chip Set</b>	Unidentified
<b>Max. Onboard DRAM</b>	512MB
<b>Cache</b>	256/512KB
<b>BIOS</b>	AWARD
<b>Dimensions</b>	330mm x 218mm
<b>I/O Options</b>	32-bit PCI slots (4)
<b>NPU Options</b>	None



CONNECTIONS			
Purpose	Location	Purpose	Location
Power LED & keylock	J17	Turbo LED	J22
Speaker	J18	32-bit PCI slots	PCI1 - PCI4
Reset switch	J19		

Continued on next page. . .

**SOYO TECHNOLOGY COMPANY, LTD.**  
**PENTIUM (P54C) EISA PCI MAINBOARD**

... continued from previous page

USER CONFIGURABLE SETTINGS		
Function	Jumper	Position
í Monitor type select color	JP3	Closed
Monitor type select monochrome	JP3	Open
í Pipeline mode disabled	JP7	Open
Pipeline mode enabled	JP7	Closed
í CPU cache type select write back	JP12	Open
CPU cache type select write through	JP12	Closed
í Single processor enabled	JP16	pins 1 & 2 closed
Dual processor enabled	JP16	pins 2 & 3 closed

DRAM CONFIGURATION			
Size	Bank 0	Bank 1	Bank 2
2MB	(2) 256K x 36	NONE	NONE
4MB	(2) 256K x 36	(2) 256K x 36	NONE
4MB	(2) 512K x 36	NONE	NONE
6MB	(2) 256K x 36	(2) 256K x 36	(2) 256K x 36
8MB	(2) 512K x 36	(2) 512K x 36	NONE
8MB	(2) 1M x 36	NONE	NONE
12MB	(2) 512K x 36	(2) 512K x 36	(2) 512K x 36
12MB	(2) 1M x 36	(2) 512K x 36	NONE
16MB	(2) 1M x 36	(2) 512K x 36	(2) 512K x 36
16MB	(2) 1M x 36	(2) 1M x 36	NONE
16MB	(2) 2M x 36	NONE	NONE
20MB	(2) 1M x 36	(2) 1M x 36	(2) 512K x 36
20MB	(2) 2M x 36	(2) 512K x 36	NONE
24MB	(2) 1M x 36	(2) 1M x 36	(2) 1M x 36
24MB	(2) 2M x 36	(2) 512K x 36	(2) 512K x 36
24MB	(2) 2M x 36	(2) 1M x 36	NONE
32MB	(2) 4M x 36	NONE	NONE
32MB	(2) 2M x 36	(2) 2M x 36	NONE
32MB	(2) 2M x 36	(2) 1M x 36	(2) 1M x 36
48MB	(2) 4M x 36	(2) 2M x 36	NONE
48MB	(2) 4M x 36	(2) 1M x 36	(2) 1M x 36
48MB	(2) 2M x 36	(2) 2M x 36	(2) 2M x 36
64MB	(2) 8M x 36	NONE	NONE
64MB	(2) 4M x 36	(2) 4M x 36	NONE
64MB	(2) 4M x 36	(2) 2M x 36	(2) 2M x 36
68MB	(2) 512K x 36	(2) 8M x 36	NONE
80MB	(2) 2M x 36	(2) 8M x 36	NONE
96MB	(2) 8M x 36	(2) 4M x 36	NONE
96MB	(2) 8M x 36	(2) 2M x 36	(2) 2M x 36
96MB	(2) 4M x 36	(2) 4M x 36	(2) 4M x 36
128MB	(2) 8M x 36	(2) 8M x 36	NONE
128MB	(2) 8M x 36	(2) 4M x 36	(2) 4M x 36
128MB	(2) 16M x 36	NONE	NONE
192MB	(2) 8M x 36	(2) 8M x 36	(2) 8M x 36

Continued on next page. . .

# SOYO TECHNOLOGY COMPANY, LTD.

## PENTIUM (P54C) EISA PCI MAINBOARD

... continued from previous page

DRAM CONFIGURATION (CON'T)			
Size	Bank 0	Bank 1	Bank 2
256MB	(2) 16M x 36	(2) 16M x 36	NONE
256MB	(2) 32M x 36	NONE	NONE
384MB	(2) 16M x 36	(2) 16M x 36	(2) 16M x 36
512MB	(2) 32M x 36	(2) 32M x 36	NONE

DRAM VOLTAGE CONFIGURATION						
Setting	J4	J5	J6	J7	J8	J9
3.33v SRAM	Closed	Closed	Closed	Open	Open	Open
Mixed SRAM	Open	Open	Open	Closed	Closed	Closed

CACHE CONFIGURATION	
Size	Bank 1
256KB	(8) 32K x 8
512KB	(8) 64K x 8

CACHE JUMPER CONFIGURATION	
Size	JP15
256KB	pins 2 & 3 closed
512KB	pins 1 & 2 closed

CPU SPEED CONFIGURATION			
Speed	JP9	JP10	JP11
90MHz	Open	Closed	Open
100MHz	Closed	Open	Closed

BIOS CONFIGURATION		
Setting	JP40	JP41
EPROM	pins 1 & 2 closed	pins 1 & 2 closed
Flash	pins 2 & 3 closed	pins 2 & 3 closed

PCI IRQ CONFIGURATION				
Setting	JP30	JP31	JP32	JP33
IRQ9/PIRQ0	pins 1 & 2 closed	Open	Open	Open
IRQ9/PIRQ1	pins 2 & 3 closed	Open	Open	Open
IRQ10/PIRQ0	Open	pins 1 & 2 closed	Open	Open
IRQ10/PIRQ1	Open	pins 2 & 3 closed	Open	Open
IRQ14/PIRQ0	Open	Open	pins 1 & 2 closed	Open
IRQ14/PIRQ1	Open	Open	pins 2 & 3 closed	Open
IRQ15/PIRQ0	Open	Open	Open	pins 1 & 2 closed
IRQ15/PIRQ1	Open	Open	Open	pins 2 & 3 closed

Continued on next page. . .

# SOYO TECHNOLOGY COMPANY, LTD.

## PENTIUM (P54C) EISA PCI MAINBOARD

... continued from previous page

PCI IRQ CONFIGURATION				
Setting	JP34	JP35	JP36	JP37
IRQ9/PIRQ2	pins 1 & 2 closed	Open	Open	Open
IRQ9/PIRQ3	pins 2 & 3 closed	Open	Open	Open
IRQ10/PIRQ2	Open	pins 1 & 2 closed	Open	Open
IRQ10/PIRQ3	Open	pins 2 & 3 closed	Open	Open
IRQ14/PIRQ2	Open	Open	pins 1 & 2 closed	Open
IRQ14/PIRQ3	Open	Open	pins 2 & 3 closed	Open
IRQ15/PIRQ2	Open	Open	Open	pins 1 & 2 closed
IRQ15/PIRQ3	Open	Open	Open	pins 2 & 3 closed