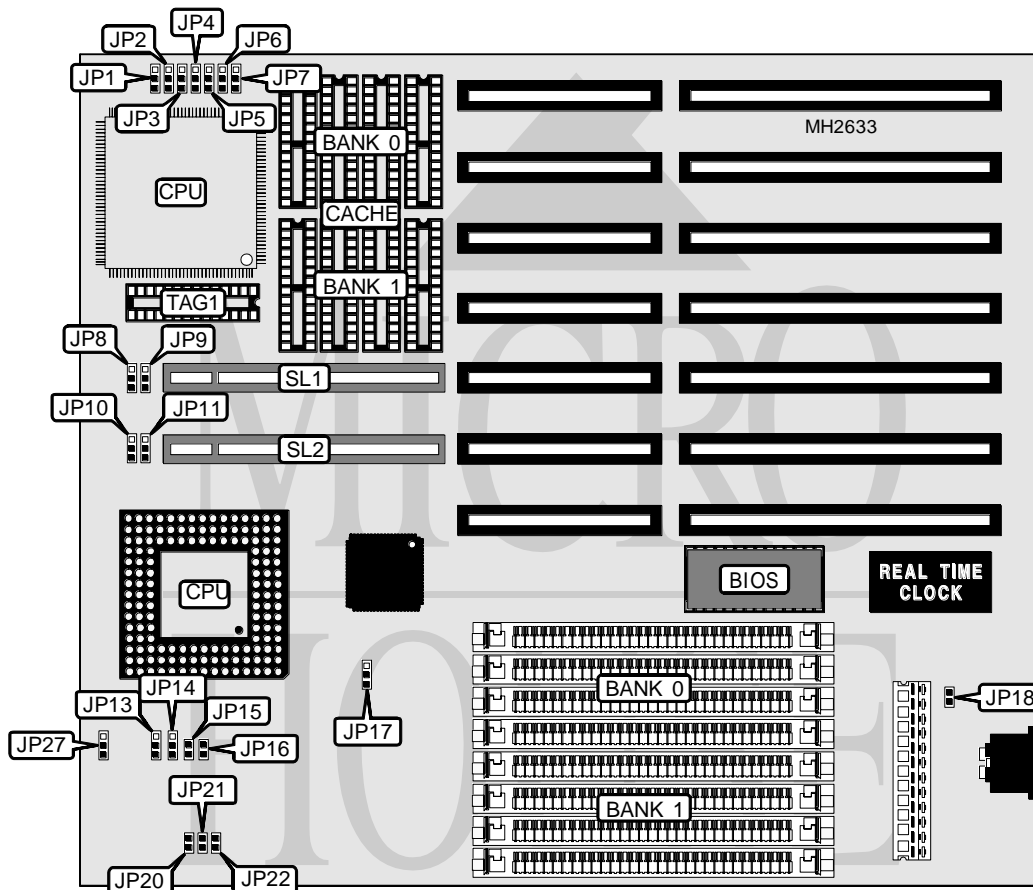


DTK COMPUTER, INC.

P K M - 0 0 3 7 S

Processor CX486M6/80486SX/80487SX/80486DX/80486DX2/Pentium Overdrive
Processor Speed 20/25/33/40/50(internal)/50/66(internal)MHz
Chip Set Unidentified
Max. Onboard DRAM 32MB
Cache 64/128/256KB
BIOS Unidentified
Dimensions 254mm x 218mm
I/O Options 32-bit VESA local bus slots (2)
NPU Options None



CONNECTIONS			
Purpose	Location	Purpose	Location
Power LED & keylock	CN1	Reset switch	CN5
Speaker	CN2	External battery	CN6
Turbo switch	CN3	32-bit VESA local bus slots	SL1 - SL2
Turbo LED	CN4		
Note: The location of CN1 - CN6 are unidentified.			

Continued on next page. . .

DTK COMPUTER, INC.
PKM - 0037S

... continued from previous page

USER CONFIGURABLE SETTINGS		
Function	Jumper	Position
í A20 Source type select chip supported	JP17	pins 1 & 2 closed
A20 Source type select 8042 supported	JP17	pins 2 & 3 closed
í Monitor type select color	JP18	Open
Monitor type select monochrome	JP18	Closed

DRAM CONFIGURATION		
Size	Bank 0	Bank 1
1MB	(4) 256K x 9	NONE
2MB	(4) 256K x 9	(4) 256K x 9
2MB	(4) 512K x 9	NONE
4MB	(4) 512K x 9	(4) 512K x 9
4MB	(4) 1M x 9	NONE
6MB	(4) 512K x 9	(4) 1M x 9
8MB	(4) 1M x 9	(4) 1M x 9
8MB	(4) 2M x 9	NONE
16MB	(4) 2M x 9	(4) 2M x 9
16MB	(4) 4M x 9	NONE
20MB	(4) 1M x 9	(4) 4M x 9
32MB	(4) 4M x 9	(4) 4M x 9

CACHE CONFIGURATION				
Size	Bank 0	Bank 1	TAG 1	TAG 2
64KB	(4) 8K x 8	(4) 8K x 8	(1) 8K x 8	(1) 8K x 8
128KB	(4) 32K x 8	(4) 32K x 8	(1) 8K x 8	(1) 8K x 8
256KB	(4) 32K x 8	(4) 32K x 8	(1) 16K x 8 or (1) 32K x 8	(1) 16K x 8 or (1) 32K x 8

Note: The location of TAG 2 is unidentified.

CACHE JUMPER CONFIGURATION				
Size	JP1	JP2	JP3	JP4
64KB	pins 1 & 2 closed	pins 1 & 2 closed	pins 1 & 2 closed	pins 1 & 2 closed
128KB	pins 2 & 3 closed	pins 1 & 2 closed	pins 2 & 3 closed	pins 1 & 2 closed
256KB	pins 2 & 3 closed	pins 2 & 3 closed	pins 2 & 3 closed	pins 2 & 3 closed

CACHE JUMPER CONFIGURATION (CON'T)			
Size	JP5	JP6	JP7
64KB	pins 2 & 3 closed	Open	pins 1 & 2 closed
128KB	pins 1 & 2 closed	pins 1 & 2 closed	pins 2 & 3 closed
256KB	pins 2 & 3 closed	pins 2 & 3 closed	pins 2 & 3 closed

Continued on next page...

DTK COMPUTER, INC.
PKM - 0037S

... continued from previous page

CPU TYPE CONFIGURATION			
Type	JP13	JP14	JP15
CX486M6	Open	pins 2 & 3 closed	Open
80486SX(PQFP)	Open	pins 2 & 3 closed	Open
80486SX(PGA)	Open	pins 2 & 3 closed	Open
80487SX	pins 2 & 3 closed	pins 1 & 2 closed	Closed
80486DX	pins 1 & 2 closed	pins 1 & 2 closed	Closed
80486DX2	pins 1 & 2 closed	pins 1 & 2 closed	Closed
Pentium Overdrive	pins 2 & 3 closed	pins 1 & 2 closed	Closed

CPU TYPE CONFIGURATION		
Type	JP16	JP27
CX486M6	Closed	pins 2 & 3 closed
80486SX(PQFP)	Open	pins 1 & 2 closed
80486SX(PGA)	Closed	pins 2 & 3 closed
80487SX	Closed	pins 1 & 2 closed
80486DX	Closed	pins 1 & 2 closed
80486DX2	Closed	pins 1 & 2 closed
Pentium Overdrive	Closed	pins 1 & 2 closed

CPU SPEED CONFIGURATION			
Speed	JP20	JP21	JP22
20MHz	Open	Open	Open
25MHz	Open	Open	Closed
33MHz	Closed	Closed	Closed
40MHz	Open	Closed	Closed
50iMHz	Open	Open	Closed
50MHz	Closed	Open	Open
66iMHz	Closed	Closed	Closed

VESA WAIT STATE CONFIGURATION		
Wait states	JP9	JP11
0 wait states	pins 1 & 2 closed	pins 1 & 2 closed
1 wait state	pins 2 & 3 closed	pins 2 & 3 closed

BUS SPEED CONFIGURATION		
CPU speed	JP8	JP10
<= 33MHz	pins 1 & 2 closed	pins 1 & 2 closed
> 33MHz	pins 2 & 3 closed	pins 2 & 3 closed