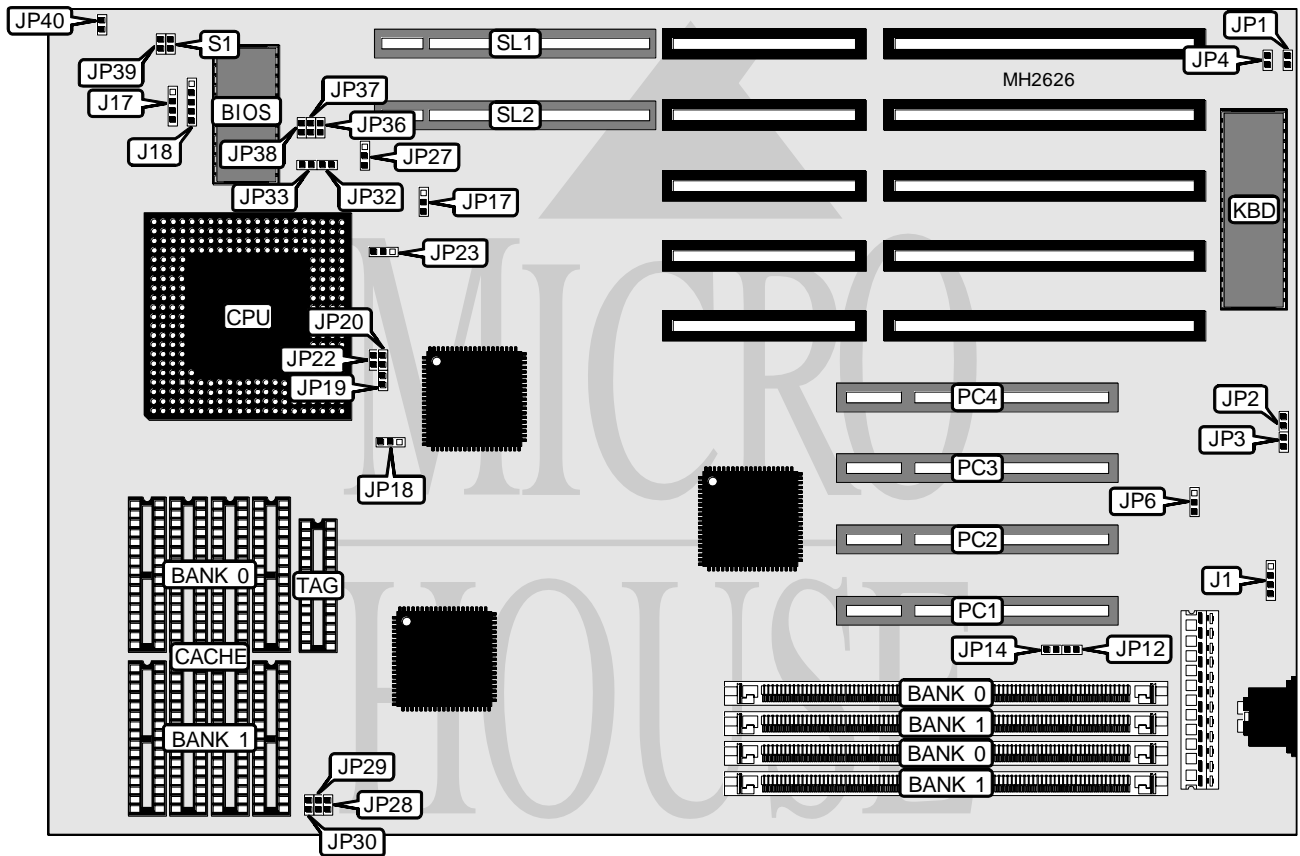


UNIDENTIFIED M B - 5 4 V P

Processor	Pentium
Processor Speed	75/90/100MHz
Chip Set	OPTI
Max. Onboard DRAM	128MB
Cache	256/512/1024KB
BIOS	Award
Dimensions	330mm x 218mm
I/O Options	32-bit VESA local bus slots (2), 32-bit PCI slots (4)
NPU Options	None



CONNECTIONS			
Purpose	Location	Purpose	Location
External battery	J1	Turbo LED	JP40
Speaker	J17	32-bit PCI slots	PC1 - PC4
Power LED & keylock	J18	Reset switch	S1
Turbo switch	JP39	32-bit VESA local bus slots	SL1 & SL2

Continued on next page. . .

UNIDENTIFIED

MB - 54VP

... continued from previous page

USER CONFIGURABLE SETTINGS		
Function	Jumper	Position
í Monitor type select color	JP1	Closed
Monitor type select monochrome	JP1	Open
í Fast VESA bus disabled	JP3	Open
Fast VESA bus enabled	JP3	Closed
í End of last T2 enabled	JP4	Open
Beginning of last T2 enabled	JP4	Closed
í CMOS memory normal operation	JP6	pins 2 & 3 closed
CMOS memory clear	JP6	pins 1 & 2 closed
í AT clock speed select 3 added	JP12	Open
AT clock speed select 0 added	JP12	Closed
í End of first T2 enabled	JP14	Open
Beginning of first T2 enabled	JP14	Closed
í Cache type select always invalidated	JP17	pins 1 & 2 closed
Cache type select invalidated on write through	JP17	pins 2 & 3 closed
í Memory type select mapped I/O at top of memory	JP27	pins 2 & 3 closed
Memory type select 128MB on board	JP27	pins 1 & 2 closed
í Bus core ratio select 2/3	JP32	Open
Bus core ratio select 1/2	JP32	Closed
í Factory configured - do not alter	JP33	N/A
í Factory configured - do not alter	JP37	N/A
í Factory configured - do not alter	JP38	N/A

DRAM CONFIGURATION		
Size	Bank 0	Bank 1
2MB	(2) 256K x 36	NONE
4MB	(2) 512K x 36	NONE
4MB	(2) 256K x 36	(2) 256K x 36
6MB	(2) 256K x 36	(2) 512K x 36
8MB	(2) 1M x 36	NONE
8MB	(2) 512K x 36	(2) 512K x 36
10MB	(2) 256K x 36	(2) 1M x 36
12MB	(2) 512K x 36	(2) 1M x 36
16MB	(2) 2M x 36	NONE
16MB	(2) 1M x 36	(2) 1M x 36
18MB	(2) 256K x 36	(2) 2M x 36
20MB	(2) 512K x 36	(2) 2M x 36
24MB	(2) 1M x 36	(2) 2M x 36
32MB	(2) 4M x 36	NONE
32MB	(2) 2M x 36	(2) 2M x 36
34MB	(2) 256K x 36	(2) 4M x 36
36MB	(2) 512K x 36	(2) 4M x 36
40MB	(2) 1M x 36	(2) 4M x 36
48MB	(2) 2M x 36	(2) 4M x 36
64MB	(2) 8M x 36	NONE

Continued on next page. . .

UNIDENTIFIED

MB - 54VP

... continued from previous page

DRAM CONFIGURATION (CON'T)		
Size	Bank 0	Bank 1
64MB	(2) 4M x 36	(2) 4M x 36
66MB	(2) 256K x 36	(2) 8M x 36
68MB	(2) 512K x 36	(2) 8M x 36
72MB	(2) 1M x 36	(2) 8M x 36
80MB	(2) 2M x 36	(2) 8M x 36
96MB	(2) 4M x 36	(2) 8M x 36
128MB	(2) 8M x 36	(2) 8M x 36

CACHE CONFIGURATION			
Size	Bank 0	Bank 1	TAG
256KB	(4) 32K x 8	(4) 32K x 8	(1) 8K x 85
512KB	(4) 64K x 8	(4) 64K x 8	(1) 32K x 8
1MB	(4) 128K x 8	(4) 128K x 8	(1) 32K x 8

CACHE JUMPER CONFIGURATION			
Size	JP28	JP29	JP30
256KB	Open	Open	Closed
512KB	Open	Closed	Closed
1MB	Closed	Closed	Closed

TAG VOLTAGE CONFIGURATION			
Voltage	JP2	JP18	JP23
3.3v	Closed	pins 2 & 3 closed	pins 1 & 2 closed
5v	Open	pins 1 & 2 closed	pins 2 & 3 closed

CPU SPEED CONFIGURATION			
Speed	JP19	JP20	JP22
75MHz	Open	Open	Closed
90MHz	Closed	Open	Closed
100MHz	Closed	Closed	Closed

VESA WAIT STATE CONFIGURATION	
Wait states	JP36
0 wait states	Open
1 wait state	Closed