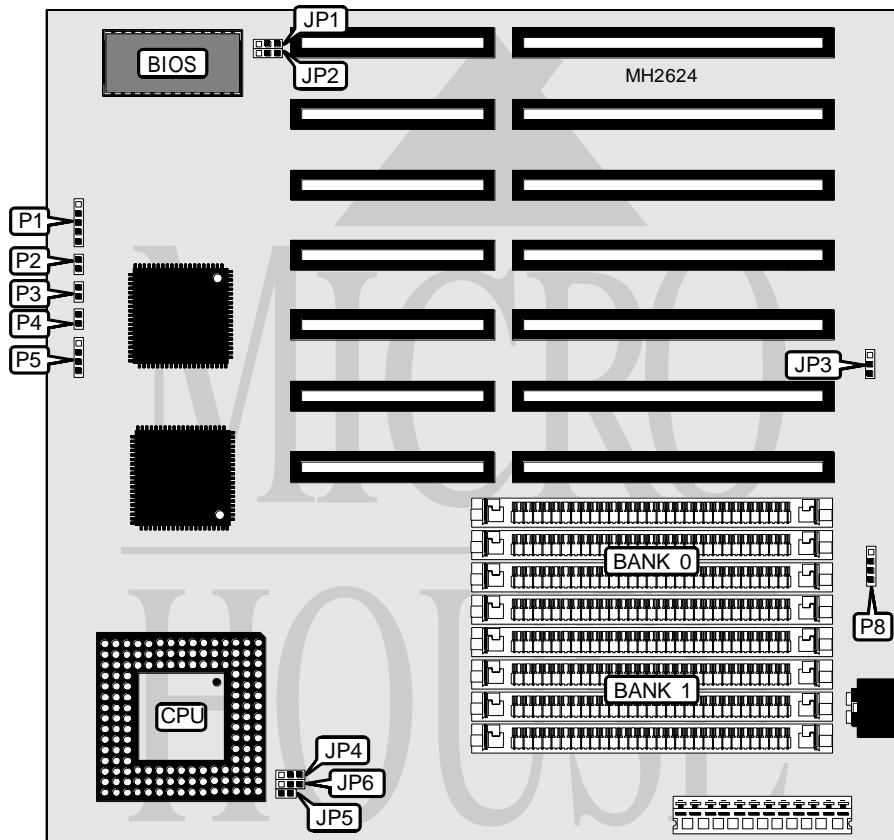


# OCEAN INFORMATION SYSTEMS, INC.

## H A W K 4 8 6

<b>Processor</b>	80486SX/80487SX/80486DX
<b>Processor Speed</b>	20/25/33/40/50MHz
<b>Chip Set</b>	Unidentified
<b>Max. Onboard DRAM</b>	32MB
<b>Cache</b>	None
<b>BIOS</b>	AMI
<b>Dimensions</b>	220mm x 220mm
<b>I/O Options</b>	None
<b>NPU Options</b>	None



CONNECTIONS			
Purpose	Location	Purpose	Location
Power LED & keylock	P1	Turbo switch	P4
Reset switch	P2	Speaker	P5
Turbo LED	P3	External battery	P8

Continued on next page. . .

OCEAN INFORMATION SYSTEMS, INC.  
H A W K 4 8 6

... continued from previous page

USER CONFIGURABLE SETTINGS		
Function	Jumper	Position
í Factory configured - do not alter	JP1	N/A
í Password disabled	JP2	Open
Password enabled	JP2	pins 1 & 2 closed
í CMOS memory normal operation	JP3	pins 1 & 2 closed
CMOS memory clear	JP3	pins 2 & 3 closed

DRAM CONFIGURATION		
Size	Bank 0	Bank 1
1MB	(4) 256K x 9	NONE
2MB	(4) 256K x 9	(4) 256K x 9
4MB	(4) 1M x 9	NONE
5MB	(4) 256K x 9	(4) 1M x 9
8MB	(4) 1M x 9	(4) 1M x 9
16MB	(4) 4M x 9	NONE
32MB	(4) 4M x 9	(4) 4M x 9

CPU TYPE CONFIGURATION			
Type	JP4	JP5	JP6
80486SX	Open	Open	pins 2 & 3 closed
80487SX	pins 2 & 3 closed	Closed	pins 1 & 2 closed
80486DX	pins 1 & 2 closed	Closed	pins 1 & 2 closed