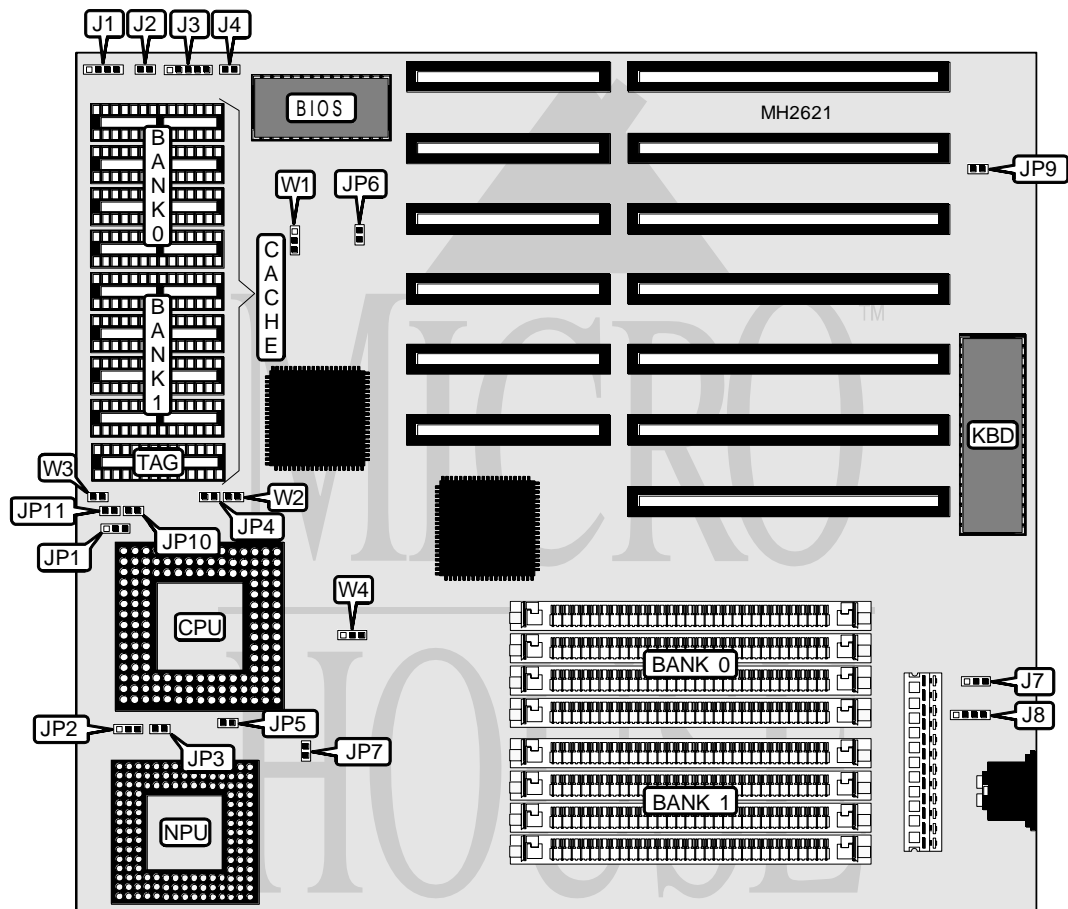


MODULAR CIRCUIT TECHNOLOGY

JDR C486-33/50/66

Processor	80486SX/80486DX/80486DX2
Processor Speed	33/66(internal)MHz
Chip Set	UMC
Max. Onboard DRAM	32MB
Cache	64/128/256KB
BIOS	AMI
Dimensions	254mm x 218mm
I/O Options	None
NPU Options	None



CONNECTIONS

Purpose	Location	Purpose	Location
Speaker	J1	Turbo LED	J4
Reset connector	J2	External battery	J8
Power LED & keylock	J3		

Continued on next page. . .

MODULAR CIRCUIT TECHNOLOGY

JDR C486-33/50/66

... continued from previous page

USER CONFIGURABLE SETTINGS

Function	Jumper	Position
í CMOS memory normal operation	J7	Open
CMOS memory clear	J7	pins 2 & 3 closed
í Factory configured - do not alter	JP4	Open
í Factory configured - do not alter	JP5	Open
í Factory configured - do not alter	JP6	Closed
í Factory configured - do not alter	JP7	Open
í Monitor type select color	JP9	Closed
Monitor type select monochrome	JP9	Open

DRAM CONFIGURATION

Size	Bank 0	Bank 1
1MB	(4) 256K x 9	NONE
2MB	(4) 256K x 9	(4) 256K x 9
4MB	(4) 1M x 9	NONE
5MB	(4) 256K x 9	(4) 1M x 9
8MB	(4) 1M x 9	(4) 1M x 9
16MB	(4) 4M x 9	NONE
20MB	(4) 1M x 9	(4) 4M x 9
32MB	(4) 4M x 9	(4) 4M x 9

CACHE CONFIGURATION

Size	Bank 0	Bank 1	TAG
64KB	(4) 8K x 8	(4) 8K x 8	(1) 8K x 8
128KB	(4) 32K x 8	NONE	(1) 8K x 8
256KB	(4) 32K x 8	(4) 32K x 8	(1) 32K x 8

CACHE JUMPER CONFIGURATION

Size	W1	W2	W3	W4
64KB	pins 2 & 3 closed	Open	Open	pins 1 & 2 closed
128KB	pins 1 & 2 closed	Open	Closed	pins 2 & 3 closed
256KB	pins 2 & 3 closed	Closed	Closed	pins 2 & 3 closed

CPU TYPE CONFIGURATION

Type	JP1	JP2	JP3
80486SX-33	Open	pins 2 & 3 closed	Open
80486DX-33	pins 1 & 2 closed	pins 1 & 2 closed	Closed
80486DX2-66	pins 1 & 2 closed	pins 1 & 2 closed	Closed

CPU TYPE CONFIGURATION

Type	JP10	JP11
80486DX	Closed	Open
80486DX2	Closed	Closed