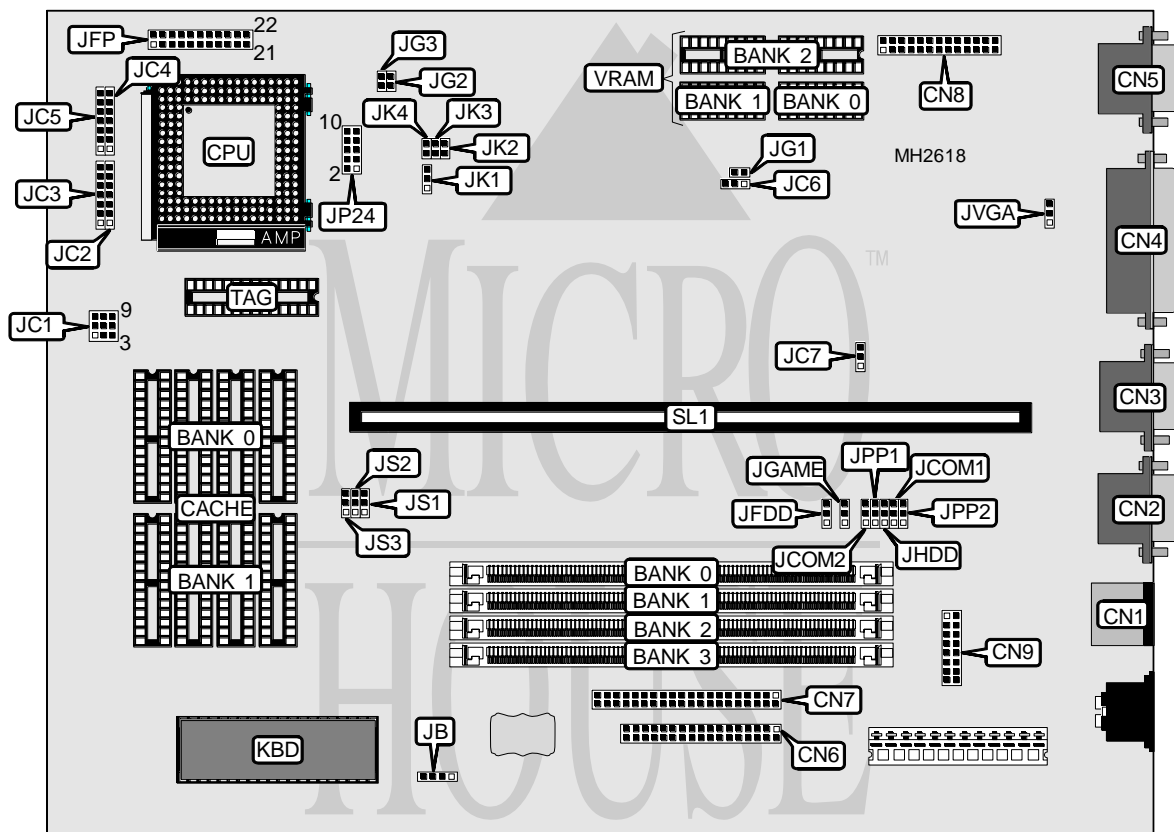


MICRO-STAR INTERNATIONAL CO., LTD.

MS - 4136

Processor	CX486S/SL80486SX/80486SX/AM486DX/CX486DX/SL80486DX/80486DX/ SL80486DX2/80486DX2/Pentium Overdrive
Processor Speed	25/33/40/50(internal)/50/66(internal)MHz
Chip Set	SIS
Max. Onboard DRAM	128MB
Cache	128/256KB
BIOS	Phoenix
Dimensions	330mm x 218mm
I/O Options	Floppy drive interface, game port, green PC connector, IDE interface, parallel port, PS/2 mouse port, serial ports (2), VGA feature connector, VGA port, riser slot
NPU Options	None



Continued on next page. . .

MICRO-STAR INTERNATIONAL CO., LTD.

MS - 4136

... continued from previous page

CONNECTIONS			
Purpose	Location	Purpose	Location
PS/2 mouse port	CN1	Power LED & keylock	JFP1 pins 1 - 5
Serial port 1	CN2	Speaker	JFP1 pins 6 - 10
Serial port 2	CN3	Turbo LED	JFP1 pins 12 - 13
Parallel port	CN4	Turbo switch	JFP1 pins 15 - 17
VGA port	CN5	Reset switch	JFP1 pins 19 - 20
Floppy drive interface	CN6	IDE interface LED	JFP1 pins 21 & 22
IDE interface	CN7	Green PC connector (monitor)	JG1
VGA feature connector	CN8	Green PC LED	JG2
Game interface	CN9	Green PC connector	JG3
External battery	JB	Riser Card	SL1

USER CONFIGURABLE SETTINGS		
Function	Jumper	Position
í Serial port 1 COM select COM1 3F8	JCOM1	pins 1 & 2 closed
Serial port 1 COM select COM3 3E8	JCOM1	pins 2 & 3 closed
í Serial port 1 COM select COM2 2F8	JCOM2	pins 1 & 2 closed
Serial port 1 COM select COM4 2E8	JCOM2	pins 2 & 3 closed
í Floppy drive interface enabled	JFDD	pins 1 & 2 closed
Floppy drive interface disabled	JFDD	pins 2 & 3 closed
í Game interface enabled	JGAME	pins 1 & 2 closed
Game interface disabled	JGAME	pins 2 & 3 closed
í IDE interface enabled	JHDD	pins 1 & 2 closed
IDE interface disabled	JHDD	pins 2 & 3 closed
í Parallel port LPT select LPT1 378	JPP1	pins 1 & 2 closed
Parallel port LPT select LPT2 278	JPP1	pins 2 & 3 closed
í Parallel port IRQ select IRQ7	JPP2	pins 1 & 2 closed
Parallel port IRQ select IRQ5	JPP2	pins 2 & 3 closed
í On board VGA enabled	JVGA	pins 1 & 2 closed
On board VGA disabled	JVGA	pins 2 & 3 closed

DRAM CONFIGURATION				
Size	Bank 0	Bank 1	Bank 2	Bank 3
1MB	(1) 256K x 36	NONE	NONE	NONE
2MB	(1) 256K x 36	(1) 256K x 36	NONE	NONE
2MB	(1) 512K x 36	NONE	NONE	NONE
4MB	(1) 256K x 36	(1) 256K x 36	(1) 512K x 36	NONE
4MB	(1) 512K x 36	(1) 512K x 36	NONE	NONE
4MB	(1) 1M x 36	NONE	NONE	NONE
5MB	(1) 256K x 36	(1) 1M x 36	NONE	NONE
6MB	(1) 256K x 36	(1) 256K x 36	(1) 1M x 36	NONE
6MB	(1) 512K x 36	(1) 1M x 36	NONE	NONE
8MB	(1) 256K x 36	(1) 256K x 36	(1) 512K x 36	(1) 1M x 36
8MB	(1) 512K x 36	(1) 512K x 36	(1) 1M x 36	NONE
8MB	(1) 1M x 36	(1) 1M x 36	NONE	NONE

Continued on next page...

MICRO-STAR INTERNATIONAL CO., LTD.

MS - 4136

... continued from previous page

DRAM CONFIGURATION (CON'T)				
Size	Bank 0	Bank 1	Bank 2	Bank 3
8MB	(1) 2M x 36	NONE	NONE	NONE
10MB	(1) 256K x 36	(1) 256K x 36	(1) 1M x 36	(1) 1M x 36
12MB	(1) 512K x 36	(1) 512K x 36	(1) 1M x 36	(1) 1M x 36
12MB	(1) 1M x 36	(1) 1M x 36	(1) 1M x 36	NONE
16MB	(1) 1M x 36	(1) 1M x 36	(1) 1M x 36	(1) 1M x 36
16MB	(1) 2M x 36	(1) 2M x 36	NONE	NONE
16MB	(1) 4M x 36	NONE	NONE	NONE
17MB	(1) 256K x 36	(1) 4M x 36	NONE	NONE
18MB	(1) 256K x 36	(1) 256K x 36	(1) 4M x 36	NONE
18MB	(1) 512K x 36	(1) 4M x 36	NONE	NONE
20MB	(1) 512K x 36	(1) 512K x 36	(1) 4M x 36	NONE
20MB	(1) 1M x 36	(1) 4M x 36	NONE	NONE
24MB	(1) 512K x 36	(1) 512K x 36	(1) 1M x 36	(1) 4M x 36
24MB	(1) 1M x 36	(1) 1M x 36	(1) 4M x 36	NONE
24MB	(1) 2M x 36	(1) 2M x 36	(1) 2M x 36	NONE
32MB	(1) 2M x 36	(1) 2M x 36	(1) 2M x 36	(1) 2M x 36
32MB	(1) 4M x 36	(1) 4M x 36	NONE	NONE
32MB	(1) 8M x 36	NONE	NONE	NONE
36MB	(1) 512K x 36	(1) 512K x 36	(1) 4M x 36	(1) 4M x 36
36MB	(1) 1M x 36	(1) 4M x 36	(1) 4M x 36	NONE
36MB	(1) 1M x 36	(1) 8M x 36	NONE	NONE
40MB	(1) 1M x 36	(1) 1M x 36	(1) 4M x 36	(1) 4M x 36
40MB	(1) 1M x 36	(1) 1M x 36	(1) 8M x 36	NONE
48MB	(1) 4M x 36	(1) 4M x 36	(1) 4M x 36	NONE
48MB	(1) 4M x 36	(1) 8M x 36	NONE	NONE
64MB	(1) 4M x 36	(1) 4M x 36	(1) 4M x 36	(1) 4M x 36
64MB	(1) 16M x 36	NONE	NONE	NONE
64MB	(1) 4M x 36	(1) 4M x 36	(1) 8M x 36	NONE
64MB	(1) 8M x 36	(1) 8M x 36	NONE	NONE
65MB	(1) 256K x 36	(1) 16M x 36	NONE	NONE
68MB	(1) 1M x 36	(1) 16M x 36	NONE	NONE
68MB	(1) 1M x 36	(1) 8M x 36	(1) 8M x 36	NONE
72MB	(1) 1M x 36	(1) 1M x 36	(1) 16M x 36	NONE
72MB	(1) 1M x 36	(1) 1M x 36	(1) 8M x 36	(1) 8M x 36
80MB	(1) 4M x 36	(1) 16M x 36	NONE	NONE
80MB	(1) 4M x 36	(1) 8M x 36	(1) 8M x 36	NONE
96MB	(1) 4M x 36	(1) 4M x 36	(1) 16M x 36	NONE
96MB	(1) 4M x 36	(1) 4M x 36	(1) 8M x 36	(1) 8M x 36
96MB	(1) 8M x 36	(1) 8M x 36	(1) 8M x 36	NONE
128MB	(1) 16M x 36	(1) 16M x 36	NONE	NONE
128MB	(1) 8M x 36	(1) 8M x 36	(1) 8M x 36	(1) 8M x 36

Continued on next page. . .

MICRO-STAR INTERNATIONAL CO., LTD.
MS - 4136

... continued from previous page

CACHE CONFIGURATION			
Size	Bank 0	Bank 1	TAG
128KB	(4) 32K x 8	NONE	(1) 8K or (1) 16K (1) 32K x 8
256KB	(4) 64K x 8	NONE	(1) 16K (1) 32K x 8
256KB	(4) 32K x 8	(4) 32K x 8	(1) 16K (1) 32K x 8

CACHE JUMPER CONFIGURATION			
Size	JS1	JS2	JS3
128KB	pins 1 & 2 closed	pins 1 & 2 closed	pins 1 & 2 closed
256KB	pins 2 & 3 closed	pins 1 & 2 closed	pins 1 & 2 closed
256KB	pins 2 & 3 closed	pins 1 & 2 closed	pins 2 & 3 closed

CPU TYPE CONFIGURATION	
Type	JC1
80486SX	pins 2 & 3, 5 & 6, 7 & 8 closed
80486DX	pins 2 & 5, 4 & 7, 6 & 9 closed
80486DX2	pins 2 & 5, 4 & 7, 6 & 9 closed
Pentium Overdrive	pins 1 & 4, 2 & 5, 6 & 9 closed

CPU TYPE CONFIGURATION				
Type	JC2	JC3	JC4	JC5
Cyrix	2 & 3, 5 & 6	2 & 3, 5 & 6	2 & 3, 5 & 6	2 & 3, 5 & 6
AMD	6 & 7	6 & 7	6 & 7	6 & 7
Intel S-series	1 & 2, 6 & 7	1 & 2, 6 & 7	1 & 2, 6 & 7	1 & 2, 6 & 7
Intel	6 & 7	6 & 7	6 & 7	6 & 7

Note: Pins designated should be in the closed position.

CPU TYPE CONFIGURATION		
Type	JC6	JC7
Cyrix	pins 1 & 2 closed	pins 2 & 3 closed
AMD	pins 2 & 3 closed	pins 1 & 2 closed
Intel	pins 2 & 3 closed	pins 1 & 2 closed

CPU SPEED CONFIGURATION				
Speed	JK1	JK2	JK3	JK4
25MHz	pins 2 & 3 closed	Closed	Closed	Closed
33MHz	pins 1 & 2 closed	Closed	Open	Closed
40MHz	pins 1 & 2 closed	Closed	Closed	Open
50iMHz	pins 2 & 3 closed	Closed	Closed	Closed
50MHz	pins 1 & 2 closed	Open	Closed	Closed
66iMHz	pins 1 & 2 closed	Closed	Open	Closed

CPU VOLTAGE CONFIGURATION	
Voltage	JP24
3.3v	pins 7 & 8, 9 & 10 closed
5v	pins 1 & 2, 3 & 4 closed

Continued on next page. ...

MICRO-STAR INTERNATIONAL CO., LTD.
MS - 4 1 3 6

... continued from previous page

VRAM CONFIGURATION			
Size	Bank 0	Bank 1	Bank 2
512KB	(1) 256K x 16	NONE	NONE
1MB	(1) 256K x 16	(1) 256K x 16	NONE
2MB	(1) 256K x 16	(1) 256K x 16	(2) 256K x 16