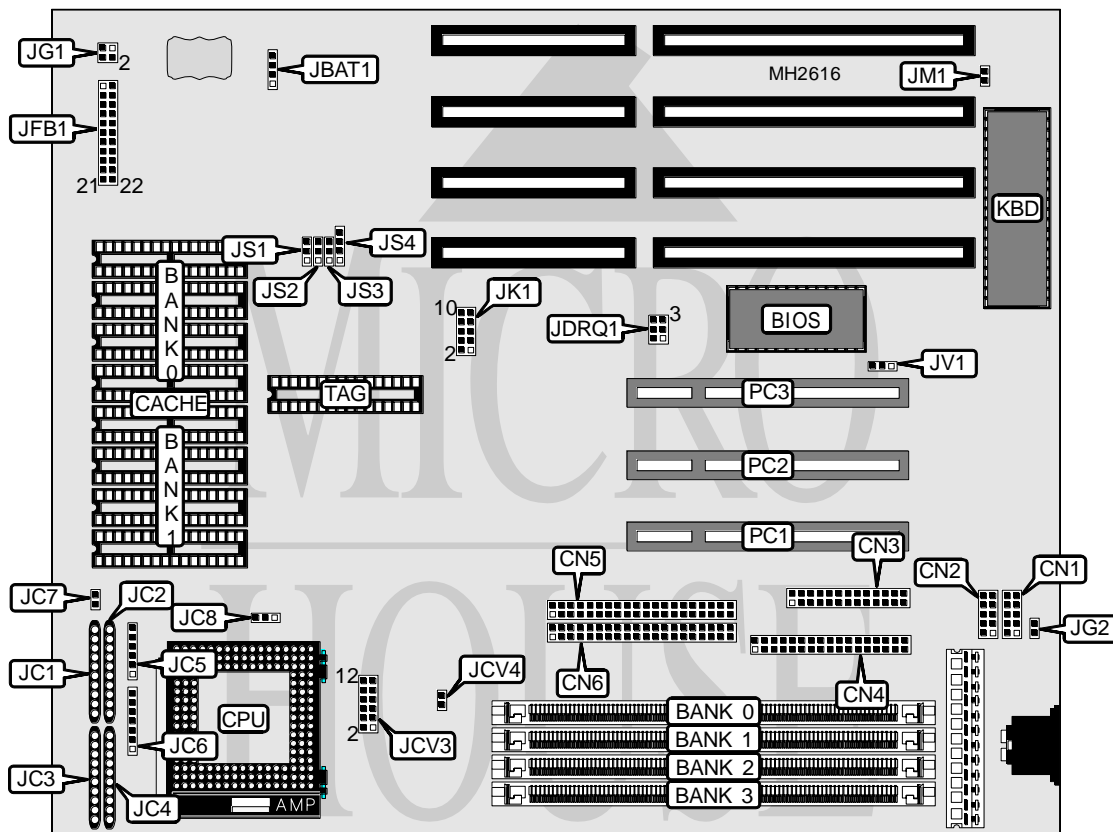


MICRO-STAR INTERNATIONAL CO., LTD.

MS - 4 1 4 4

Processor	CX476S/SL80486SX/80486SX/CX486DX/SLAMD486DX/AM486DX/SL80486DX80486DX/AM486DX2/SL80486DX2/80486DX4
Processor Speed	25/33/40/50(internal)/50/66(internal)/75(internal)/100(internal)MHz
Chip Set	SIS
Max. Onboard DRAM	128MB
Cache	128/256/512/1024KB
BIOS	AMI
Dimensions	254mm x 218mm
I/O Options	32-bit PCI slots (3), floppy drive interface, green PC connector, IDE interfaces (2), parallel port, serial ports (2)
NPU Options	None



Continued on next page. . .

MICRO-STAR INTERNATIONAL CO., LTD.

MS - 4144

... continued from previous page

CONNECTIONS			
Purpose	Location	Purpose	Location
Serial port 1	CN1	Turbo LED	JFB1 pins 12 - 13
Serial port 2	CN2	Turbo switch	JFB1 pins 15 - 17
Parallel port	CN3	Reset switch	JFB1 pins 19 - 20
Floppy drive interface	CN4	IDE interface LED	JFB1 pins 21 & 22
IDE interface (secondary)	CN5	Green PC LED	JG1 pins 1 & 2
IDE interface (primary)	CN6	Green PC connector	JG1 pins 3 & 4
External battery	JBAT1	Green PC connector (monitor)	JG2
Power LED & keylock	JFB1 pins 1 - 5	Chassis fan power	JFAN1
Speaker	JFB1 pins 6 - 10	32-bit PCI slots	PC1 - PC3

Note: The location of JFAN1 is unidentified.

USER CONFIGURABLE SETTINGS		
Function	Jumper	Position
í Battery type select internal	JBAT1	pins 2 & 3 closed
Battery type select external	JBAT1	Closed
í Factory configured - do not alter	JM1	N/A
í Factory configured - do not alter	JV1	N/A

DRAM CONFIGURATION				
Size	Bank 0	Bank 1	Bank 2	Bank 3
1MB	(1) 256K x 36	NONE	NONE	NONE
2MB	(1) 256K x 36	(1) 256K x 36	NONE	NONE
2MB	(1) 512K x 36	NONE	NONE	NONE
4MB	(1) 256K x 36	(1) 256K x 36	(1) 512K x 36	NONE
4MB	(1) 512K x 36	(1) 512K x 36	NONE	NONE
4MB	(1) 1M x 36	NONE	NONE	NONE
5MB	(1) 256K x 36	(1) 1M x 36	NONE	NONE
6MB	(1) 256K x 36	(1) 256K x 36	(1) 1M x 36	NONE
6MB	(1) 512K x 36	(1) 1M x 36	NONE	NONE
8MB	(1) 256K x 36	(1) 256K x 36	(1) 512K x 36	(1) 1M x 36
8MB	(1) 512K x 36	(1) 512K x 36	(1) 1M x 36	NONE
8MB	(1) 1M x 36	(1) 1M x 36	NONE	NONE
8MB	(1) 2M x 36	NONE	NONE	NONE
10MB	(1) 256K x 36	(1) 256K x 36	(1) 1M x 36	(1) 1M x 36
12MB	(1) 512K x 36	(1) 512K x 36	(1) 1M x 36	(1) 1M x 36
12MB	(1) 1M x 36	(1) 1M x 36	(1) 1M x 36	NONE
16MB	(1) 1M x 36	(1) 1M x 36	(1) 1M x 36	(1) 1M x 36
16MB	(1) 2M x 36	(1) 2M x 36	NONE	NONE
16MB	(1) 4M x 36	NONE	NONE	NONE
17MB	(1) 256K x 36	(1) 4M x 36	NONE	NONE
18MB	(1) 256K x 36	(1) 256K x 36	(1) 4M x 36	NONE
18MB	(1) 512K x 36	(1) 4M x 36	NONE	NONE
20MB	(1) 512K x 36	(1) 512K x 36	(1) 4M x 36	NONE
20MB	(1) 1M x 36	(1) 4M x 36	NONE	NONE

Continued on next page. . .

MICRO-STAR INTERNATIONAL CO., LTD.

MS - 4144

... continued from previous page

DRAM CONFIGURATION (CON'T)				
Size	Bank 0	Bank 1	Bank 2	Bank 3
24MB	(1) 512K x 36	(1) 512K x 36	(1) 1M x 36	(1) 4M x 36
24MB	(1) 1M x 36	(1) 1M x 36	(1) 4M x 36	NONE
24MB	(1) 2M x 36	(1) 2M x 36	(1) 2M x 36	NONE
32MB	(1) 2M x 36	(1) 2M x 36	(1) 2M x 36	(1) 2M x 36
32MB	(1) 4M x 36	(1) 4M x 36	NONE	NONE
32MB	(1) 8M x 36	NONE	NONE	NONE
36MB	(1) 512K x 36	(1) 512K x 36	(1) 4M x 36	(1) 4M x 36
36MB	(1) 1M x 36	(1) 4M x 36	(1) 4M x 36	NONE
36MB	(1) 1M x 36	(1) 8M x 36	NONE	NONE
40MB	(1) 1M x 36	(1) 1M x 36	(1) 4M x 36	(1) 4M x 36
40MB	(1) 1M x 36	(1) 1M x 36	(1) 8M x 36	NONE
48MB	(1) 4M x 36	(1) 4M x 36	(1) 4M x 36	NONE
48MB	(1) 4M x 36	(1) 8M x 36	NONE	NONE
64MB	(1) 4M x 36	(1) 4M x 36	(1) 4M x 36	(1) 4M x 36
64MB	(1) 16M x 36	NONE	NONE	NONE
64MB	(1) 4M x 36	(1) 4M x 36	(1) 8M x 36	NONE
64MB	(1) 8M x 36	(1) 8M x 36	NONE	NONE
65MB	(1) 256K x 36	(1) 16M x 36	NONE	NONE
68MB	(1) 1M x 36	(1) 16M x 36	NONE	NONE
68MB	(1) 1M x 36	(1) 8M x 36	(1) 8M x 36	NONE
72MB	(1) 1M x 36	(1) 1M x 36	(1) 16M x 36	NONE
72MB	(1) 1M x 36	(1) 1M x 36	(1) 8M x 36	(1) 8M x 36
80MB	(1) 4M x 36	(1) 16M x 36	NONE	NONE
80MB	(1) 4M x 36	(1) 8M x 36	(1) 8M x 36	NONE
96MB	(1) 4M x 36	(1) 4M x 36	(1) 16M x 36	NONE
96MB	(1) 4M x 36	(1) 4M x 36	(1) 8M x 36	(1) 8M x 36
96MB	(1) 8M x 36	(1) 8M x 36	(1) 8M x 36	NONE
128MB	(1) 16M x 36	(1) 16M x 36	NONE	NONE
128MB	(1) 8M x 36	(1) 8M x 36	(1) 8M x 36	(1) 8M x 36

CACHE CONFIGURATION			
Size	Bank 0	Bank 1	TAG
128KB	(4) 32K x 8	NONE	(1) 8K or (1) 16K or (1) 32K x 8
256KB	(4) 32K x 8	(4) 32K x 8	(1) 16K or (1) 32K x 8
256KB	(4) 64K x 8	NONE	(1) 16K or (1) 32K x 8
512KB	(4) 64K x 8	(4) 64K x 8	(1) 32K x 8
512KB	(4) 128K x 8	NONE	(1) 32K x 8
1MB	(4) 128K x 8	(4) 128K x 8	(1) 64K x 8

Continued on next page. . .

MICRO-STAR INTERNATIONAL CO., LTD.

MS - 4144

... continued from previous page

CACHE JUMPER CONFIGURATION				
Size	JS1	JS2	JS3	JS4
128KB	pins 1 & 2 closed	pins 1 & 2 closed	Open	pins 2 & 3 closed
256KB	pins 2 & 3 closed	pins 1 & 2 closed	Open	pins 3 & 4 closed
256KB	pins 2 & 3 closed	pins 1 & 2 closed	Open	pins 1 & 2, 3 & 4 closed
512KB	pins 2 & 3 closed	pins 2 & 3 closed	pins 1 & 2 closed	pins 3 & 4 closed
512KB	pins 2 & 3 closed	pins 2 & 3 closed	pins 1 & 2 closed	pins 1 & 2, 3 & 4 closed
1MB	pins 2 & 3 closed	pins 2 & 3 closed	pins 2 & 3 closed	pins 3 & 4 closed

CPU TYPE CONFIGURATION				
Type	JC5	JC6	JC7	JC8
CX486S	pins 3 & 4, 5 & 6 closed	pins 4 & 5, 6 & 7 closed	Open	Open
SL80486SX	pins 4 & 5 closed	pins 6 & 7 closed	Open	Open
80486SX	pins 4 & 5 closed	pins 6 & 7 closed	Open	Open
CX486DX	pins 3 & 4, 5 & 6 closed	pins 4 & 5, 6 & 7 closed	Open	Open
SL AMD486DX	pins 3 & 4, 5 & 6 closed	pins 4 & 5, 6 & 7 closed	Open	Open
AM486DX	pins 3 & 4, 5 & 6 closed	pins 4 & 5, 6 & 7 closed	Open	Open
SL80486DX	pins 3 & 4, 5 & 6 closed	pins 4 & 5, 6 & 7 closed	Open	Open
80486DX	pins 3 & 4, 5 & 6 closed	pins 4 & 5, 6 & 7 closed	Open	Open
AM486DX2	pins 3 & 4, 5 & 6 closed	pins 4 & 5, 6 & 7 closed	Open	Open
SL80486DX2	pins 3 & 4, 5 & 6 closed	pins 4 & 5, 6 & 7 closed	Open	Open
80486DX2	pins 3 & 4, 5 & 6 closed	pins 4 & 5, 6 & 7 closed	Open	Open
80486DX2 (WB)	pins 3 & 4, 5 & 6 closed	pins 4 & 5, 6 & 7 closed	Open	Open
80486DX4	pins 3 & 4, 5 & 6 closed	pins 4 & 5, 6 & 7 closed	Open	Open

CPU TYPE CONFIGURATION				
Type	JC1	JC2	JC3	JC4
CX486S	Not installed	Installed	Not installed	Not installed
SL80486SX	Installed	Not installed	Not installed	Not installed
80486SX	Not installed	Not installed	Not installed	Not installed
CX486DX	Not installed	Installed	Not installed	Not installed
SL AMD486DX	Not installed	Not installed	Not installed	Not installed
AM486DX	Not installed	Not installed	Not installed	Not installed
SL80486DX	Installed	Not installed	Not installed	Not installed
80486DX	Not installed	Not installed	Not installed	Not installed
AM486DX2	Not installed	Not installed	Not installed	Not installed
SL80486DX2	Installed	Not installed	Not installed	Not installed
80486DX2	Not installed	Not installed	Not installed	Not installed
80486DX2 (WB)	Installed	Not installed	Installed	Not installed
80486DX4	Installed	Not installed	Not installed	Not installed

Continued on next page. . .

MICRO-STAR INTERNATIONAL CO., LTD.

MS - 4 1 4 4

... continued from previous page

CPU SPEED CONFIGURATION	
Speed	JK1
25MHz	pins 7 & 8 closed
33MHz	pins 1 & 2, 3 & 4, 7 & 8 closed
40MHz	pins 3 & 4, 9 & 10 closed
50iMHz	pins 7 & 8 closed
50MHz	pins 1 & 2, 5 & 6, 9 & 10 closed
66iMHz	pins 1 & 2, 3 & 4, 7 & 8 closed
75iMHz	pins 7 & 8 closed
100iMHz	pins 1 & 2, 3 & 4, 7 & 8 closed

CPU VOLTAGE CONFIGURATION		
Voltage	JCV3	JCV4
3.45v	pins 1 & 2, 3 & 4, 5 & 6 closed	Open
3.8v	pins 1 & 2, 3 & 4, 5 & 6 closed	Closed
5v	pins 7 & 8, 9 & 10, 11 & 12 closed	Open

DACK/DRQ CONFIGURATION	
DACK/DRQ	JDRQ1
DACK1/DRQ1	pins 1 & 2, 4 & 5 closed
DACK3/DRQ3	pins 2 & 3, 5 & 6 closed