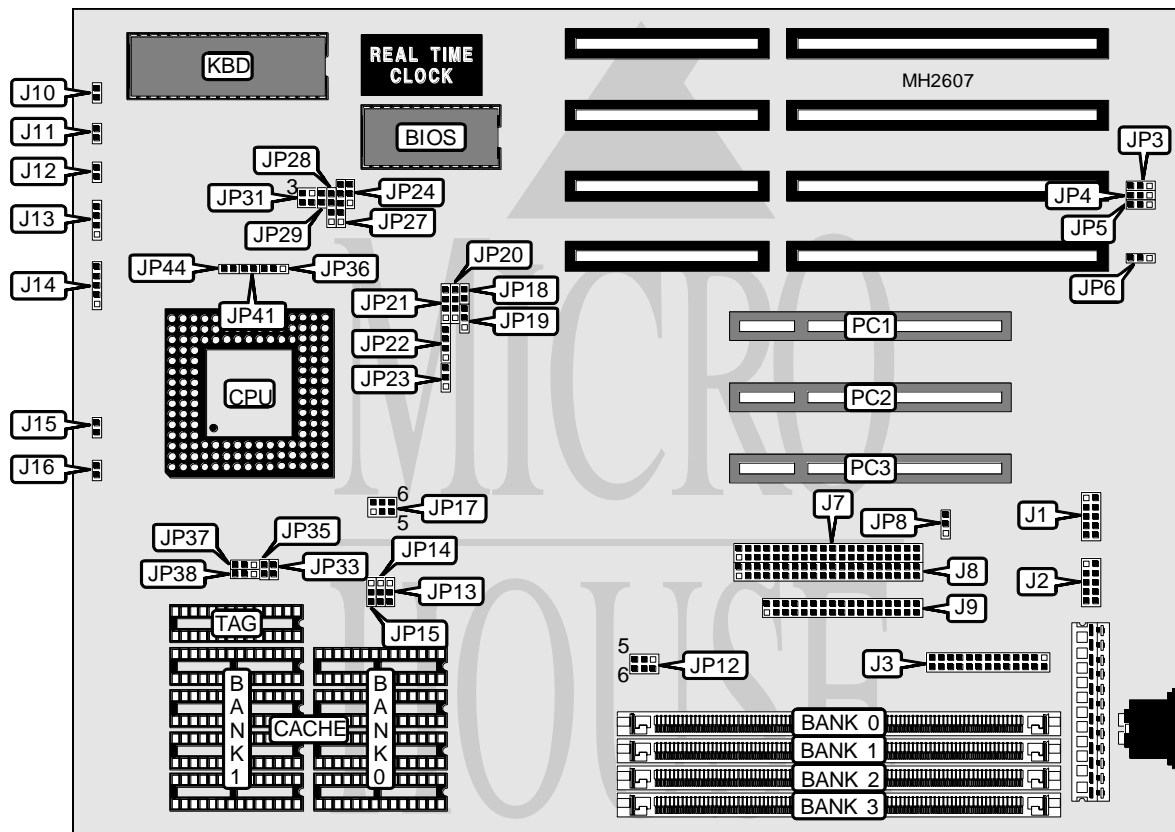


ELITEGROUP COMPUTER SYSTEMS, INC.

UM8810P-AIO (ECS)(REV. 1.0)

Processor	CX486S/SL80486SX/80486SX/80487SX/SL80486SX2/UMU5S/UMU5DS/ CX486DX/AM486DX/SL80486DX/80486DX/AM486DXL/AM486DXL2/CX486DX2/AM486DX 2/SL80486DX2/80486DX2/80486DX4/Pentium Overdrive
Processor Speed	25/33/40/50(internal)/50/66(internal)/75(internal)/100(internal)MHz
Chip Set	UMC
Max. Onboard DRAM	64MB
Cache	128/256/512KB
BIOS	Phoenix
Dimensions	330mm x 218mm
I/O Options	32-bit PCI slots (3), floppy drive interface, green PC connector, IDE interfaces (2), parallel port, serial ports (2)
NPU Options	None



CONNECTIONS			
Purpose	Location	Purpose	Location
Serial port 2	J1	Turbo LED	J11
Serial port 1	J2	Reset switch	J12
Parallel port	J3	Speaker	J13
IDE interface (primary)	J7	Power LED & keylock	J14
IDE interface (secondary)	J8	Green PC connector	J15
Floppy drive interface	J9	IDE interface LED	J16
Turbo switch	J10	32-bit PCI slots	PC1 - PC3

Continued on next page...

ELITEGROUP COMPUTER SYSTEMS, INC.

UM8810P-AIO (ECS)(REV. 1.0)

... continued from previous page

USER CONFIGURABLE SETTINGS		
Function	Jumper	Position
í Parallel port IRQ select IRQ7	JP3	pins 1 & 2 closed
Parallel port IRQ select IRQ5	JP3	pins 2 & 3 closed
í BIOS type select EPROM	JP6	Open
BIOS type select flash 5v	JP6	pins 1 & 2 closed
BIOS type select flash 12v	JP6	pins 2 & 3 closed
í On board 37C665 enabled	JP8	pins 1 & 2 closed
On board 37C665 disabled	JP8	pins 2 & 3 closed
í IDE interface enabled	JP12	Open
IDE interface disabled	JP12	pins 5 & 6 closed
í Factory configured - do not alter	JP41	N/A
Factory configured - do not alter	JP44	N/A

DRAM CONFIGURATION				
Size	Bank 0	Bank 1	Bank 2	Bank 3
1MB	(1) 256K x 36	NONE	NONE	NONE
2MB	(1) 256K x 36	(1) 256K x 36	NONE	NONE
4MB	(1) 512K x 36	(1) 512K x 36	NONE	NONE
6MB	(1) 256K x 36	(1) 256K x 36	(1) 512K x 36	(1) 512K x 36
8MB	(1) 512K x 36	(1) 512K x 36	(1) 512K x 36	(1) 512K x 36
8MB	(1) 1M x 36	(1) 1M x 36	NONE	NONE
10MB	(1) 256K x 36	(1) 256K x 36	(1) 1M x 36	(1) 1M x 36
12MB	(1) 512K x 36	(1) 512K x 36	(1) 1M x 36	(1) 1M x 36
16MB	(1) 1M x 36	(1) 1M x 36	(1) 1M x 36	(1) 1M x 36
16MB	(1) 2M x 36	(1) 2M x 36	NONE	NONE
18MB	(1) 256K x 36	(1) 256K x 36	(1) 2M x 36	(1) 2M x 36
20MB	(1) 512K x 36	(1) 512K x 36	(1) 2M x 36	(1) 2M x 36
20MB	(1) 2M x 36	(1) 2M x 36	(1) 512K x 36	(1) 512K x 36
24MB	(1) 1M x 36	(1) 1M x 36	(1) 2M x 36	(1) 2M x 36
24MB	(1) 2M x 36	(1) 2M x 36	(1) 1M x 36	(1) 1M x 36
32MB	(1) 2M x 36	(1) 2M x 36	(1) 2M x 36	(1) 2M x 36
32MB	(1) 4M x 36	(1) 4M x 36	NONE	NONE
34MB	(1) 256K x 36	(1) 256K x 36	(1) 4M x 36	(1) 4M x 36
36MB	(1) 512K x 36	(1) 512K x 36	(1) 4M x 36	(1) 4M x 36
36MB	(1) 4M x 36	(1) 4M x 36	(1) 512K x 36	(1) 512K x 36
40MB	(1) 1M x 36	(1) 1M x 36	(1) 4M x 36	(1) 4M x 36
40MB	(1) 4M x 36	(1) 4M x 36	(1) 1M x 36	(1) 1M x 36
48MB	(1) 2M x 36	(1) 2M x 36	(1) 4M x 36	(1) 4M x 36
48MB	(1) 4M x 36	(1) 4M x 36	(1) 2M x 36	(1) 2M x 36
64MB	(1) 4M x 36	(1) 4M x 36	(1) 4M x 36	(1) 4M x 36

Continued on next page. ...

ELITEGROUP COMPUTER SYSTEMS, INC.

UM8810P-AIO (ECS)(REV. 1.0)

... continued from previous page

CACHE CONFIGURATION			
Size	Bank 0	Bank 1	TAG
128KB	(4) 32K x 8	NONE	(1) 32K x 8
256KB	(4) 32K x 8	(4) 32K x 8	(1) 32K x 8
512KB	(4) 64K x 8	(4) 64K x 8	(1) 32K x 8
512KB	(4) 128K x 8	NONE	(1) 32K x 8

CACHE JUMPER CONFIGURATION					
Size	JP13	JP14	JP16	JP33	JP35
128KB	Open	1 & 2	2 & 3	Open	Open
256KB	Open	2 & 3	1 & 2	Open	Closed
512KB	Open	2 & 3	1 & 2	Open	Closed
512KB	1 & 2	2 & 3	2 & 3	Open	Closed

Note: Pins designated should be in the closed position.

CPU TYPE CONFIGURATION				
Type	JP18	JP19	JP20	JP21
CX486S	Open	2 & 3	2 & 3	Open
SL80486SX	Open	Open	2 & 3	Open
80486SX	Open	Open	2 & 3	Open
80487SX	Open	Open	1 & 2, 3 & 4	2 & 3
SL80486SX2	Open	Open	2 & 3	Open
UMU5S	Open	Open	2 & 3	1 & 2, 3 & 4
UMU5DS	Open	Open	1 & 2, 3 & 4	1 & 2, 3 & 4
CX486DX	Open	2 & 3	1 & 2, 3 & 4	1 & 2
AM486DX	Open	Open	1 & 2, 3 & 4	1 & 2
SL80486DX	Open	Open	1 & 2, 3 & 4	1 & 2
80486DX	Open	Open	1 & 2, 3 & 4	1 & 2
AM486DXL	Open	Open	1 & 2, 3 & 4	1 & 2, 3 & 4
AM486DXL2	Open	Open	1 & 2, 3 & 4	1 & 2, 3 & 4
CX486DX2	Open	2 & 3	1 & 2, 3 & 4	1 & 2
AM486DX2	Open	Open	1 & 2, 3 & 4	1 & 2
SL80486DX2	Open	Open	1 & 2, 3 & 4	1 & 2
80486DX2 (WB)	Closed	Open	1 & 2, 3 & 4	1 & 2
80486DX2	Open	Open	1 & 2, 3 & 4	1 & 2
80486DX4	Open	Open	1 & 2, 3 & 4	1 & 2
Pentium Overdrive	N/A	Open	1 & 2, 3 & 4	2 & 3

Note: Pins designated should be in the closed position.

Continued on next page. . .

ELITEGROUP COMPUTER SYSTEMS, INC.
UM8810P-AIO (ECS)(REV. 1.0)

... continued from previous page

CPU TYPE CONFIGURATION (CON'T)				
Type	JP22	JP23	JP24	JP27
CX486S	2 & 3	2 & 3	2 & 3	1 & 2, 3 & 4
SL80486SX	1 & 2	Open	2 & 3	2 & 3, 4 & 5
80486SX	Open	Open	1 & 2	Open
80487SX	Open	Open	1 & 2	Open
SL80486SX2	1 & 2	Open	2 & 3	2 & 3, 4 & 5
UMU5S	Open	Open	1 & 2	Open
UMU5DS	Open	Open	1 & 2	Open
CX486DX	2 & 3	2 & 3	2 & 3	1 & 2, 3 & 4
AM486DX	Open	Open	1 & 2	Open
SL80486DX	1 & 2	Open	2 & 3	2 & 3, 4 & 5
80486DX	Open	Open	1 & 2	Open
AM486DXL	Open	Open	1 & 2	Open
AM486DXL2	Open	Open	1 & 2	Open
CX486DX2	2 & 3	2 & 3	2 & 3	1 & 2, 3 & 4
AM486DX2	Open	Open	1 & 2	Open
SL80486DX2	1 & 2	Open	2 & 3	2 & 3, 4 & 5
80486DX2 (WB)	1 & 2, 3 & 4	Open	2 & 3	2 & 3, 4 & 5
80486DX2	Open	Open	1 & 2	Open
80486DX4	1 & 2	Open	2 & 3	2 & 3, 4 & 5
Pentium Overdrive	1 & 2	1 & 2	2 & 3, 4 & 5	2 & 3

Note: Pins designated should be in the closed position.

CPU TYPE CONFIGURATION (CON'T)					
Type	JP28	JP31	JP36	JP37	JP38
CX486S	1 & 2	1 & 2	1 & 2	1 & 2	2 & 3
SL80486SX	Open	1 & 2	1 & 2	1 & 2	1 & 2
80486SX	Open	1 & 2	Open	1 & 2	1 & 2
80487SX	Open	1 & 2	Open	1 & 2	1 & 2
SL80486SX2	Open	1 & 2	1 & 2	1 & 2	1 & 2
UMU5S	3 & 4	1 & 2	2 & 3	2 & 3	1 & 2
UMU5DS	3 & 4	1 & 2	2 & 3	2 & 3	1 & 2
CX486DX	2 & 3	1 & 2	1 & 2	1 & 2	2 & 3
AM486DX	Open	1 & 2	Open	1 & 2	1 & 2
SL80486DX	Open	1 & 2	1 & 2	1 & 2	1 & 2
80486DX	Open	1 & 2	Open	1 & 2	1 & 2
AM486DXL	3 & 4	1 & 2	2 & 3	2 & 3	1 & 2
AM486DXL2	3 & 4	1 & 2	2 & 3	2 & 3	1 & 2
CX486DX2	2 & 3	1 & 2	1 & 2	1 & 2	2 & 3
AM486DX2	Open	1 & 2	Open	1 & 2	1 & 2
SL80486DX2	Open	1 & 2	1 & 2	1 & 2	1 & 2
80486DX2 (WB)	Open	1 & 2	1 & 2	1 & 2	1 & 2
80486DX2	Open	1 & 2	Open	1 & 2	1 & 2
80486DX4	Open	3 & 4	1 & 2	1 & 2	1 & 2
Pentium Overdrive	1 & 2	1 & 2	1 & 2	1 & 2	1 & 2

Note: Pins designated should be in the closed position.

Continued on next page. . .

ELITEGROUP COMPUTER SYSTEMS, INC.
UM8810P-AIO (ECS)(REV. 1.0)

... continued from previous page

CPU SPEED CONFIGURATION	
Speed	JP17
25MHz	pins 1 & 2 closed
33MHz	pins 1 & 2, 3 & 4, 5 & 6 closed
40MHz	pins 1 & 2, 3 & 4 closed
50iMHz	pins 1 & 2 closed
50MHz	pins 5 & 6 closed
66iMHz	pins 1 & 2, 3 & 4, 5 & 6 closed
75iMHz	pins 1 & 2 closed
100iMHz	pins 1 & 2, 3 & 4, 5 & 6 closed

CPU SPEED CONFIGURATION (80486DX4 ONLY)	
Speed	JP29
2x	Closed
3x	Open

PARALLEL PORT DRQ CONFIGURATION		
DACK/DRQ	JP4	JP5
DACK3/DRQ3	pins 1 & 2 closed	pins 2 & 3 closed
DACK1/DRQ1	pins 2 & 3 closed	pins 1 & 2 closed