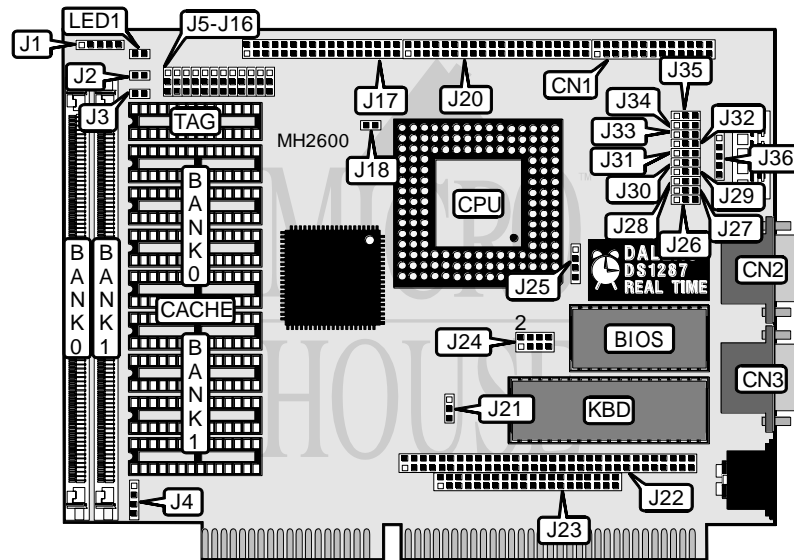


# AXIOM TECHNOLOGY, INC.

## A X 8 0 3 5 H

<b>Processor</b>	CX486S/80486SX/80487SX/CX486DX/80486DX/80486DX2
<b>Processor Speed</b>	33/50MHz
<b>Chip Set</b>	UMC
<b>Max. Onboard DRAM</b>	64MB
<b>Cache</b>	32/64/128/256KB
<b>BIOS</b>	AMI
<b>Dimensions</b>	185mm x 122mm
<b>I/O Options</b>	Floppy drive interface, IDE interface, parallel port, serial ports (2)
<b>NPU Options</b>	None



CONNECTIONS			
Purpose	Location	Purpose	Location
Parallel port	CN1	Floppy drive interface	J17
Serial port 1	CN2	IDE interface LED	J18
Serial port 2	CN3	IDE interface	J20
Power LED & keylock	J1	PC/104 bus connector	J22
Turbo switch	J2	PC/104 bus connector	J23
Reset switch	J3	Auxiliary keyboard connector	J36
Speaker	J4	Turbo LED	LED1

Continued on next page. . .

**AXIOM TECHNOLOGY, INC.**  
**AX8035H**

... continued from previous page

USER CONFIGURABLE SETTINGS		
Function	Jumper	Position
í Factory configured - do not alter	J14	pins 1 & 2 closed
í Factory configured - do not alter	J15	pins 1 & 2 closed
í Parallel port enabled	J26	pins 1 & 2 closed
Parallel port disabled	J26	pins 2 & 3 closed
í Floppy drive interface enabled	J29	pins 1 & 2 closed
Floppy drive interface disabled	J29	pins 2 & 3 closed
í Parallel port select LPT2	J30	pins 1 & 2 closed
Parallel port select LPT3	J30	pins 2 & 3 closed
í Watch dog timer select reset system when WDT time out	J35	pins 1 & 2 closed
Watch dog timer select activate NMI to CPU reset system	J35	pins 2 & 3 closed
Watch dog timer select disabled	J35	Open

DRAM CONFIGURATION		
Size	Bank 0	Bank 1
1MB	(1) 256K x 36	NONE
2MB	(1) 256K x 36	(1) 256K x 36
2MB	(1) 512K x 36	NONE
3MB	(1) 512K x 36	(1) 256K x 36
4MB	(1) 512K x 36	(1) 512K x 36
4MB	(1) 1M x 36	NONE
5MB	(1) 1M x 36	(1) 256K x 36
6MB	(1) 1M x 36	(1) 512K x 36
8MB	(1) 1M x 36	(1) 1M x 36
8MB	(1) 2M x 36	NONE
9MB	(1) 2M x 36	(1) 256K x 36
10MB	(1) 2M x 36	(1) 512K x 36
12MB	(1) 2M x 36	(1) 1M x 36
16MB	(1) 2M x 36	(1) 2M x 36
16MB	(1) 4M x 36	NONE
17MB	(1) 4M x 36	(1) 256K x 36
18MB	(1) 4M x 36	(1) 512K x 36
20MB	(1) 4M x 36	(1) 1M x 36
24MB	(1) 4M x 36	(1) 2M x 36
32MB	(1) 4M x 36	(1) 4M x 36
32MB	(1) 8M x 36	NONE
33MB	(1) 8M x 36	(1) 256K x 36
34MB	(1) 8M x 36	(1) 512K x 36
36MB	(1) 8M x 36	(1) 1M x 36
40MB	(1) 8M x 36	(1) 2M x 36
48MB	(1) 8M x 36	(1) 4M x 36
64MB	(1) 8M x 36	(1) 8M x 36

Continued on next page. . .

# AXIOM TECHNOLOGY, INC.

## AX8035H

... continued from previous page

CACHE CONFIGURATION			
Size	Bank 0	Bank 1	TAG
32KB	(4) 8K x 8	NONE	(1) 8K x 8
64KB	(4) 8K x 8	(4) 8K x 8	(1) 8K x 8
128KB	(4) 32K x 8	NONE	(1) 8K x 8
256KB	(4) 32K x 8	(4) 32K x 8	(1) 32K x 8

CACHE JUMPER CONFIGURATION					
Size	J5	J6	J7	J8	J9
32KB	2 & 3	2 & 3	2 & 3	2 & 3	Open
64KB	2 & 3	2 & 3	1 & 2	1 & 2	Open
128KB	2 & 3	1 & 2	1 & 2	2 & 3	2 & 3
256KB	1 & 2	1 & 2	1 & 2	1 & 2	1 & 2

Note: Pins designated should be in the closed position.

CPU TYPE CONFIGURATION		
Type	J16	J25
CX486S	Open	pins 2 & 3 closed
80846SX	Open	pins 2 & 3 closed
80487SX	pins 2 & 3 closed	pins 1 & 2, 3 & 4 closed
CX486DX	pins 1 & 2 closed	pins 1 & 2, 3 & 4 closed
80486DX	pins 1 & 2 closed	pins 1 & 2, 3 & 4 closed
80486DX2	pins 1 & 2 closed	pins 1 & 2, 3 & 4 closed

VESA ACTIVE/RECOVERY TIME CONFIGURATION							
Speed	Active	Recovery	Speed	J10	J11	J12	J13
33MHz	5T	5T	> 2	2 & 3	1 & 2	1 & 2	1 & 2
33MHz	5T	7T	> 1	1 & 2	1 & 2	1 & 2	1 & 2
33MHz	5T	9T	> 0	2 & 3	2 & 3	1 & 2	1 & 2
50MHz	9T	9T	> 2	2 & 3	2 & 3	1 & 2	2 & 3
50MHz	9T	11T	> 1	1 & 2	2 & 3	1 & 2	2 & 3
50MHz	9T	13T	> 0	2 & 3	1 & 2	2 & 3	2 & 3

Note: Pins designated should be in the closed position.

ON BOARD IDE CONFIGURATION		
Setting	J27	J28
Enabled	pins 1 & 2 closed	pins 1 & 2 closed
Disabled	pins 2 & 3 closed	pins 2 & 3 closed

SERIAL PORT CONFIGURATION		
Setting	J31	J33
Serial port 1 enabled	pins 1 & 2 closed	N/A
Serial port 1 disabled	pins 2 & 3 closed	N/A
Serial port 2 enabled	N/A	pins 1 & 2 closed
Serial port 2 disabled	N/A	pins 2 & 3 closed

Continued on next page...

**AXIOM TECHNOLOGY, INC.**  
**AX8035H**

... continued from previous page

SERIAL PORT 1 CONFIGURATION	
COM port	J32
COM1	pins 1 & 2 closed
COM3	pins 2 & 3 closed

SERIAL PORT 2 CONFIGURATION	
COM port	J34
COM2	pins 1 & 2 closed
COM4	pins 2 & 3 closed

WATCH DOG TIMER CONFIGURATION		
Time	J21	J24
.5	pins 1 & 2 closed	pins 1 & 2 closed
1	pins 1 & 2 closed	pins 3 & 4 closed
4	pins 1 & 2 closed	pins 5 & 6 closed
8	pins 1 & 2 closed	pins 7 & 8 closed
15	pins 2 & 3 closed	pins 1 & 2 closed
30	pins 2 & 3 closed	pins 3 & 4 closed
120	pins 2 & 3 closed	pins 5 & 6 closed
240	pins 2 & 3 closed	pins 7 & 8 closed

Note; Time is represented in seconds.