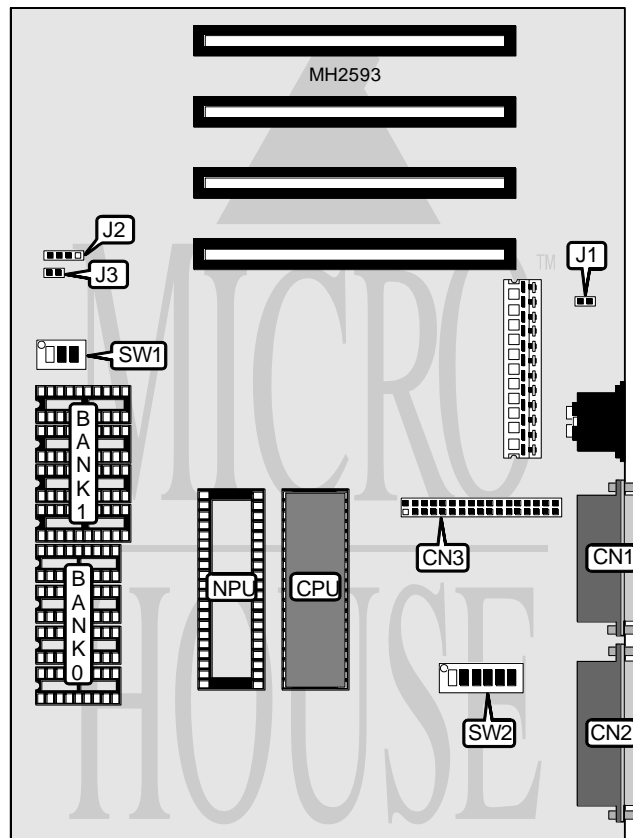


# UNIDENTIFIED SUPER-16V

<b>Processor</b>	8088
<b>Processor Speed</b>	4.77/10MHz
<b>Chip Set</b>	Unidentified
<b>Max. Onboard DRAM</b>	640KB
<b>Cache</b>	None
<b>BIOS</b>	Unidentified
<b>Dimensions</b>	220mm x 218mm
<b>I/O Options</b>	Floppy drive interface, parallel port, serial port
<b>NPU Options</b>	8087



CONNECTIONS			
Purpose	Location	Purpose	Location
Serial port	CN1	Reset switch	J1
Parallel port	CN2	Speaker	J2
Floppy drive interface	CN3	Power LED	J3

Continued on next page. . .

# UNIDENTIFIED SUPER - 16V

... continued from previous page

USER CONFIGURABLE SETTINGS		
Function	Switch	Position
í NPU disabled	SW1/2	On
NPU enabled	SW1/2	Off
í Monitor type select color	SW1/3	On
Monitor type select monochrome	SW1/3	Off
í Factory configured - do not alter	SW2/1	On
í Factory configured - do not alter	SW2/2	On
í RTC select 240-25F	SW2/3	On
RTC select 340-35F	SW2/3	Off
í Factory configured - do not alter	SW2/4	Off
í Parallel port enabled	SW2/5	On
Parallel port disabled	SW2/5	Off
í Serial port enabled	SW2/6	On
Serial port disabled	SW2/6	Off

DRAM CONFIGURATION		
Size	Bank 0	Bank 1
640KB	(4) 44256	(4) 4464

CPU SPEED CONFIGURATION	
Speed	SW1/1
4.77MHz	Off
10MHz	On